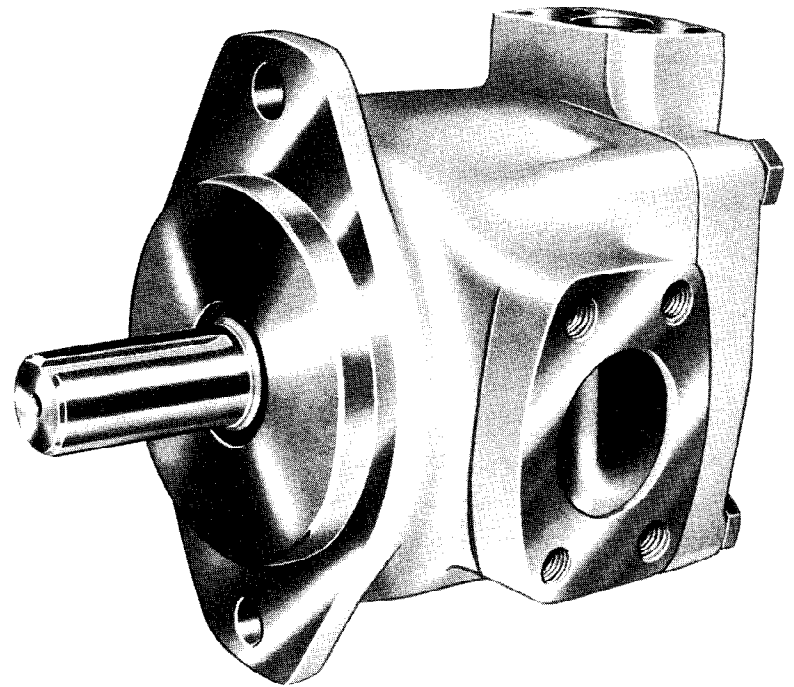


BULLETIN SP9-5A

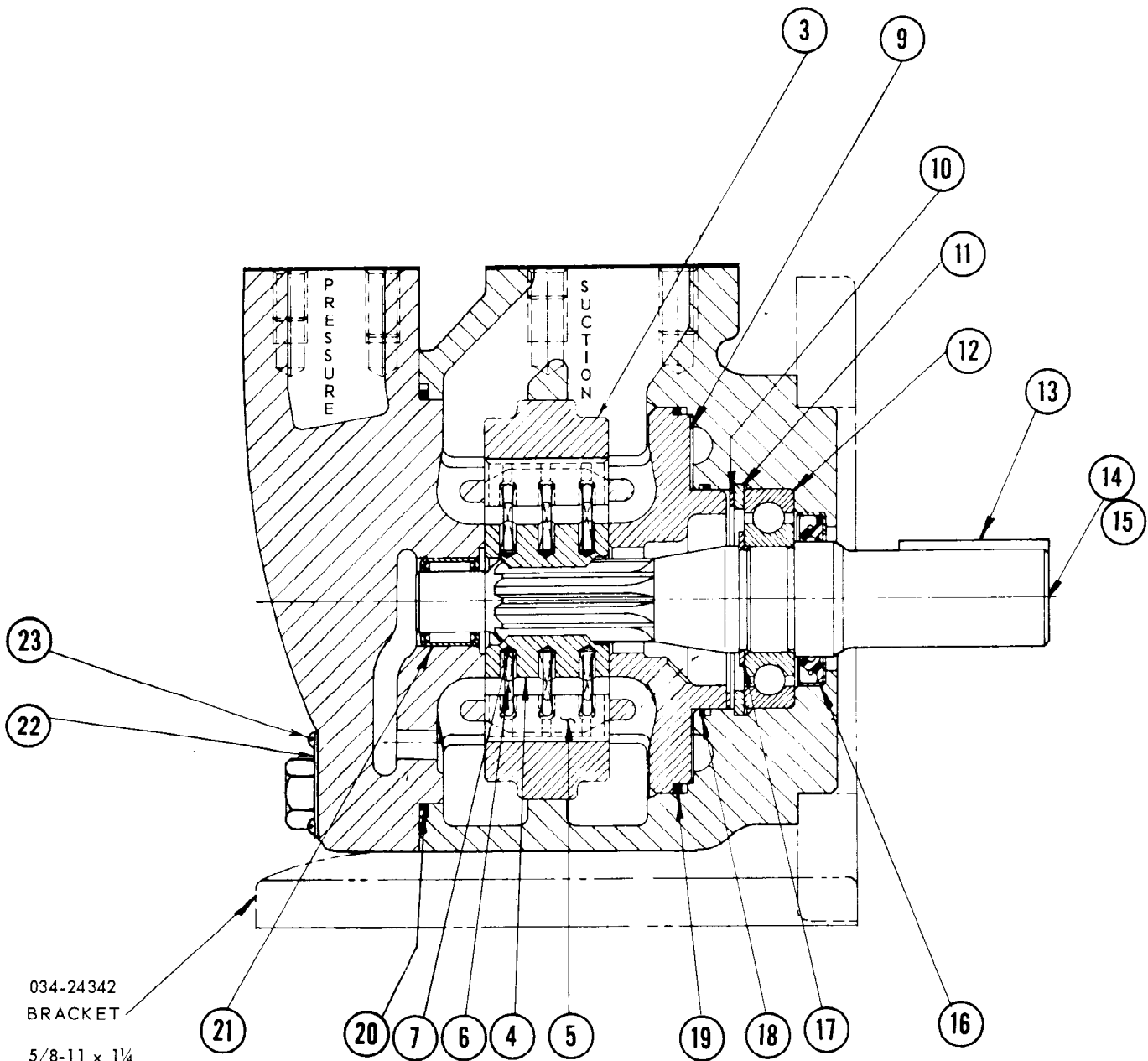
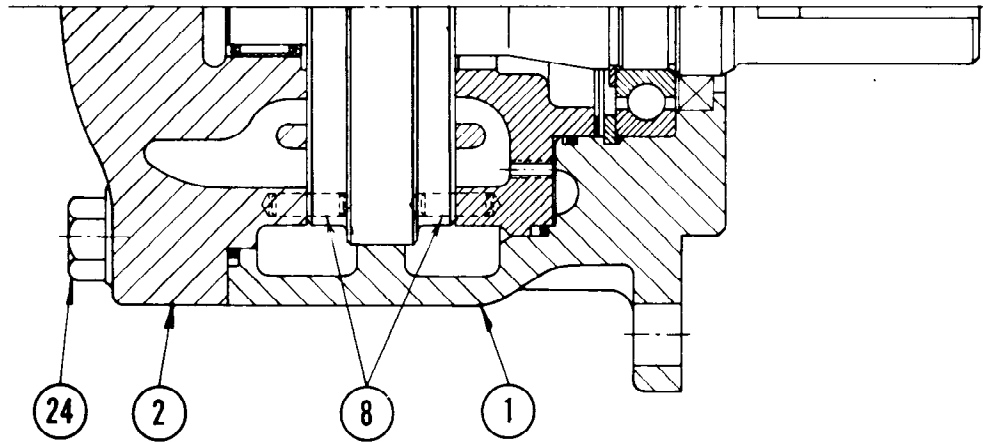
Denison Division

service information

**SERIES "T2D" VANE PUMPS
MAXIMUM 2000 P.S.I.
& 2400 R.P.M.**



Abex
CORPORATION



034-24342
BRACKET

5/8-11 x 1/4
H.H.C. screws
2 req'd.
306-24180

**REPLACEMENT PARTS LIST
T2D VANE PUMP**

REF. NO.	DESCRIPTION	PART NO.	QTY
1	Body housing	034-29415	1
2	Cap	034-44899	1
3	Cam ring, T2D-020	034-27300	1
	Cam ring, T2D-028	034-27301	1
	Cam ring, T2D-031	034-27302	1
	Cam ring, T2D-035	034-27303	1
	Cam ring, T2D-038	034-27304	1
4	Rotor ▲	034-21383	1
5	Vane ▲	034-24478	10
6	Vane spring ▲	034-21396	30
7	Spring guide ▲	034-24678	30
8	Dowel pin, 1/4 x 3/4	324-21612	2
9	Front port plate	034-44897	1
10	Wavy washer No. 2332	350-10025	1
11	Retaining ring No. 5008-283	356-32283	1
12	Ball bearing N.D. 3207	230-00207	1
13	Shaft key use w/No. 14	034-19579	1
14	Shaft (keyed)	034-29416	1
15	Shaft (splined)	034-29417	1
16	Shaft seal No. 78 x 0643 (s)	620-82005	1
17	Retaining ring 5100-137	356-31137	1
18	Square section seal TS33-149 (s)	691-10149	1
19	Square section seal TS33-248 (s)	691-10248	1
20	Square section seal TS33-252 (s)	691-10252	1
21	Needle bearing BH 1312	230-82002	1
22	Data plate	034-42164	1
23	R.H. screw Type F No. 4-40 x 3/16	320-20403	4
24	H.H.C. screw 5/8-11 x 2-1/4	306-40008	4
(s)	These items included in seal kit		
	T2D Seal Kit	S14-15021	1
▲	These items and a cam ring included in the following kits:		
	T2D-020 cam ring assembly kit	S14-08042	1
	T2D-208 cam ring assembly kit	S14-08043	1
	T2D-031 cam ring assembly kit	S14-08044	1
	T2D-035 cam ring assembly kit	S14-08045	1
	T2D-038 cam ring assembly kit	S14-08046	1

FLUID CONNECTIONS	FLANGES	SEALS	SCREWS	CODE NO.
	May be ordered as an assembly			
1 1/4" NPT Outlet	034-24189	671-00223	306-40000	S14-06617
1 1/4" IPS Soc. weld or	034-24347	691-10224	306-40000	S14-08055
1 1/4" SAE-20 1-5/8-12 thrds. Pressure	034-24190	671-00223	358-18200	S14-06618
2" NPT Inlet	034-29420	691-10231	306-20300	S14-09335
2" IPS Soc. weld or	034-29817	691-10231	306-20300	S14-09336
2" SAE-32 2 1/2"-12 thrds. Suction	034-29815	691-10231	358-20200	S14-09337
Quantity per unit	1	1	4	1

To change shaft rotation:

Remove end cap (2) and one dowel pin (8). Thread two 10-24 screws in the tapped holes in the cam ring and remove the cam ring assembly as a unit.

Remove the other dowel pin (8) from the front port plate and insert in the other hole in the same plate. Use the hole nearest the arrow indicating direction of rotation. Remove the two screws from the cam ring assembly and thread them into the two holes on the

opposite side of the assembly. Place the cam ring assembly on the shaft and over the dowel pin (8) in the port plate.

Install the other dowel pin (8) in the top of the cam ring assembly. Position the end cap (2) over the dowel pin (8) using the hole in the end cap nearest the arrow indicating the desired rotation. Hold the end cap against the cam ring assembly and rotate the cap and all internal parts to the required location and insert the screws and tighten to 130 ft. lbs. torque.

DENISON

SERVICE FACILITIES

*Service is available
from the following offices:*

DECATUR, GEORGIA 30033
1845 Lawrensville Highway
Phone: (404) 636-7579

COLUMBUS, OHIO 43216
1160 Dublin Road
Phone: (614) 488-1191

CHICAGO, ILLINOIS 60638
7000 West 63rd Street
Phone: (312) 586-3737

HAWTHORNE, CALIFORNIA 90250
2323 West El Segundo Blvd.
Phone: (213) 757-2246

MAHWAH, NEW JERSEY 07430
Ramapo Valley Road
Phone: (201) 529-4550

HOUSTON, TEXAS 77008
P.O. Box 7353
3315 West 12th Street
Phone: (713) 869-3776



CORPORATION

Denison Division

1160 DUBLIN ROAD
COLUMBUS, OHIO 43216