

## MODEL CODE BREAKDOWN

TA 19 V20 \* \* -2 \* \* - \*\* \* \* \* \* 21

1 2 3 4 5 6 7 8 9 10 11 12 13 14

1 Transmission pump

2 Flow rating  
@ 1800 rpm  
19 - 19 USgpm

3 Auxiliary vane pump

4 Vane pump cover  
F - Flow control  
P - Priority flow  
Omitted - STD cover

5 Rotation  
(Viewed from shaft end)  
R - Right hand (CW)  
L - Left hand (CCW)

6 Input shaft  
2 - SAE B-B Spline

7 Control pintle  
(Location viewed from shaft end w/drain port up.)  
A - Right hand  
B - Left hand

8 Main relief valve  
R - Relief valve  
O - No relief valve

9 Ring capacity  
(@ 1200 rpm)  
07 - 7 USgpm    11 - 11 USgpm  
08 - 8 USgpm    12 - 12 USgpm  
09 - 9 USgpm    13 - 13 USgpm  
10 - 10 USgpm

10 Vane pump inlet position  
(Viewed from cover end)  
A - 45° CCW from case drain  
C - 135° CW from case drain

11 Outlet port positions  
(Viewed from cover end)  
A - Opposite inlet  
B - 90° CCW from inlet  
C - In line with inlet  
D - 90° CW from inlet

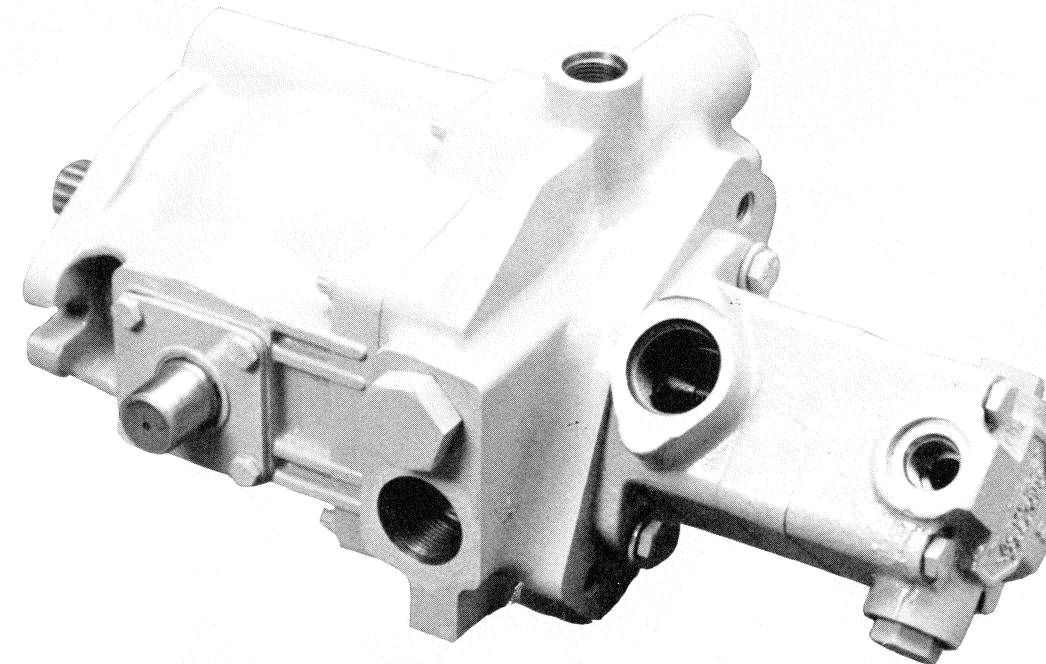
12 Flow rate  
Orifice in "F" cover:  
2, 4, 6, 8, 10 USgpm  
Orifice in "P" cover:  
1, 2, 2.5, 3, 4, 5, 6, 7, 8 USgpm

13 Vane pump relief valve setting  
(("F" & "P" cover)  
\*A - 250 psi    F - 1500 psi  
\*B - 500 psi    G - 1750 psi  
C - 750 psi    H - 2000 psi  
D - 1000 psi    J - 2250 psi  
E - 1250 psi    K - 2500 psi  
\* "P" Cover only

14 Design

## Single Transmission Pump with Single Vane Pump

TA19V20\*-21



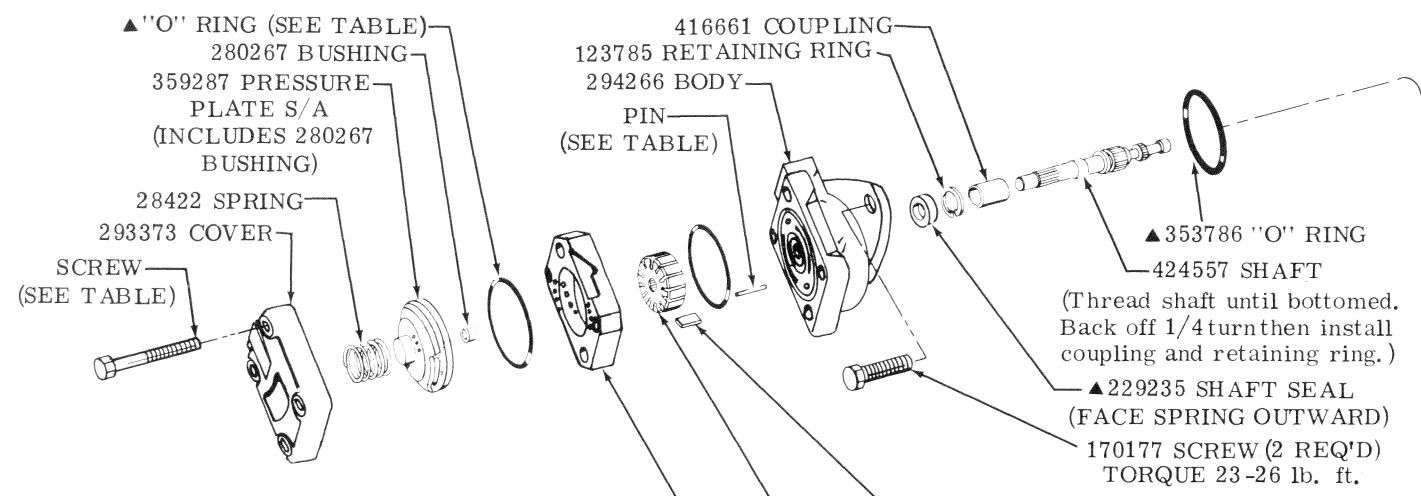
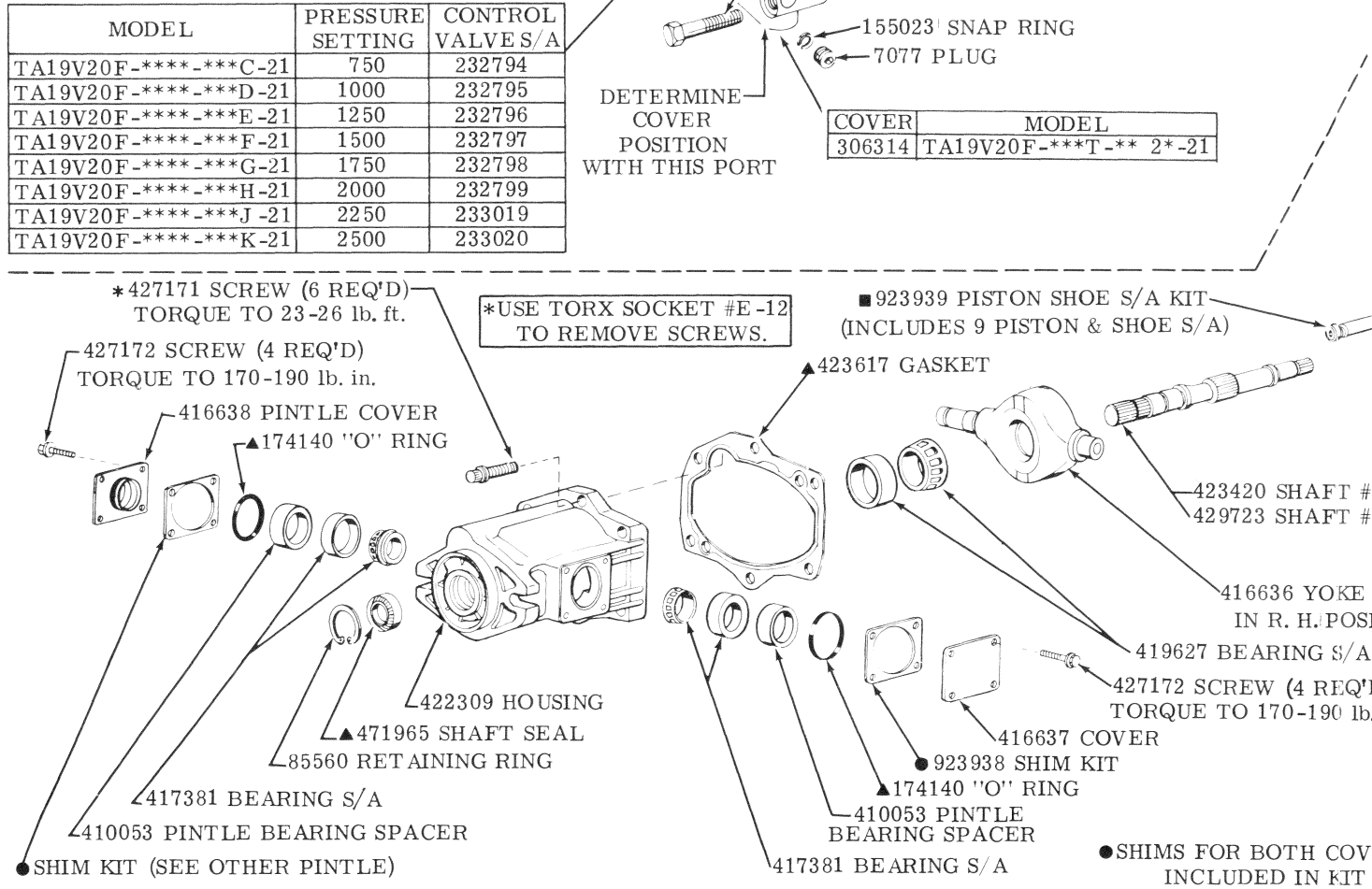
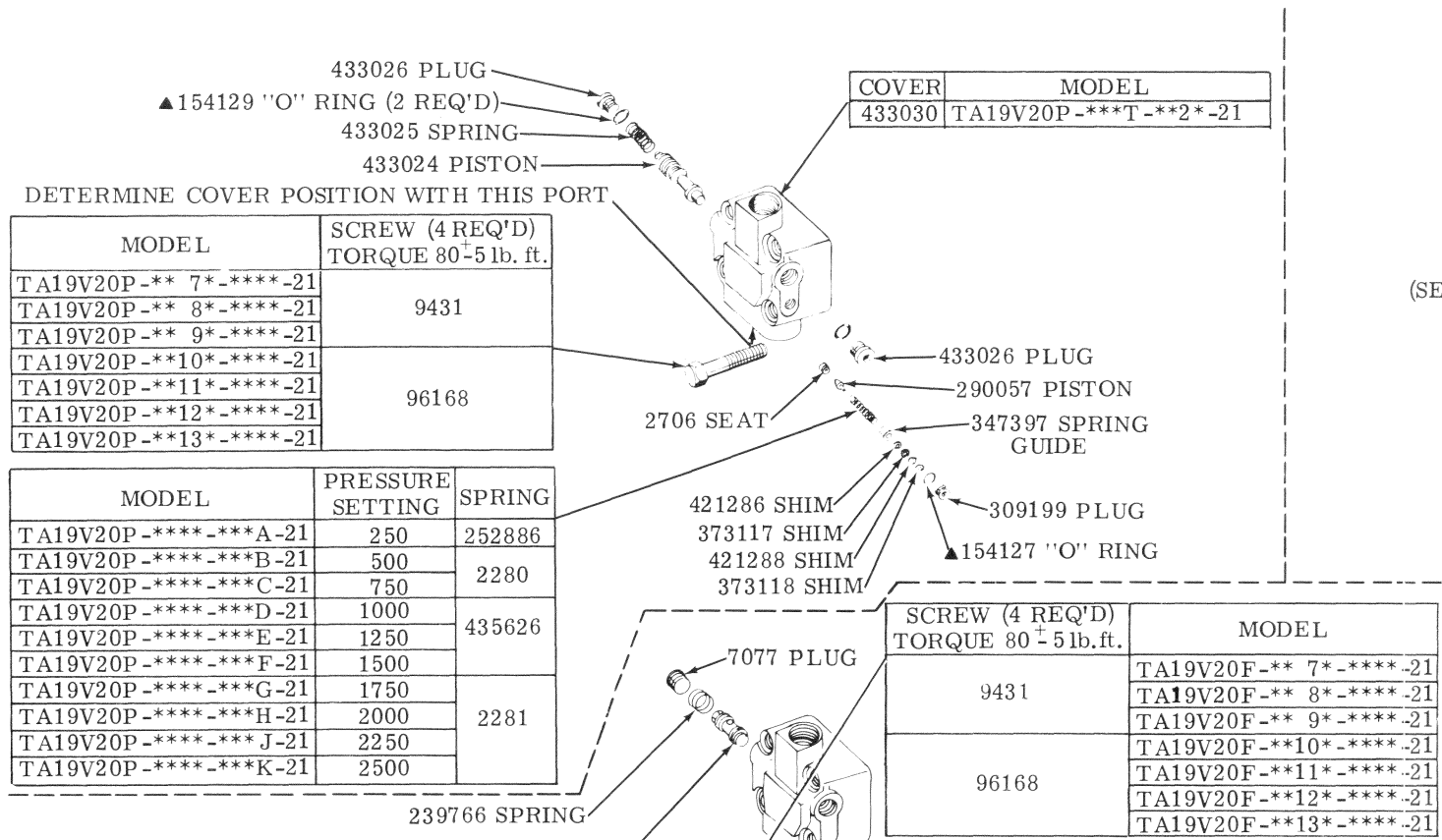
For satisfactory service life of these components, use full flow filtration to provide fluid which meets ISO cleanliness code 16/13 or cleaner. Selections from pressure, return, and in-line filter series are recommended.

Litho in U. S. A.

Vickers Incorporated  
A TRINOVA Company  
5445 Corporate Drive  
P.O. Box 302  
Troy, Michigan 48007-0302  
U.S.A.

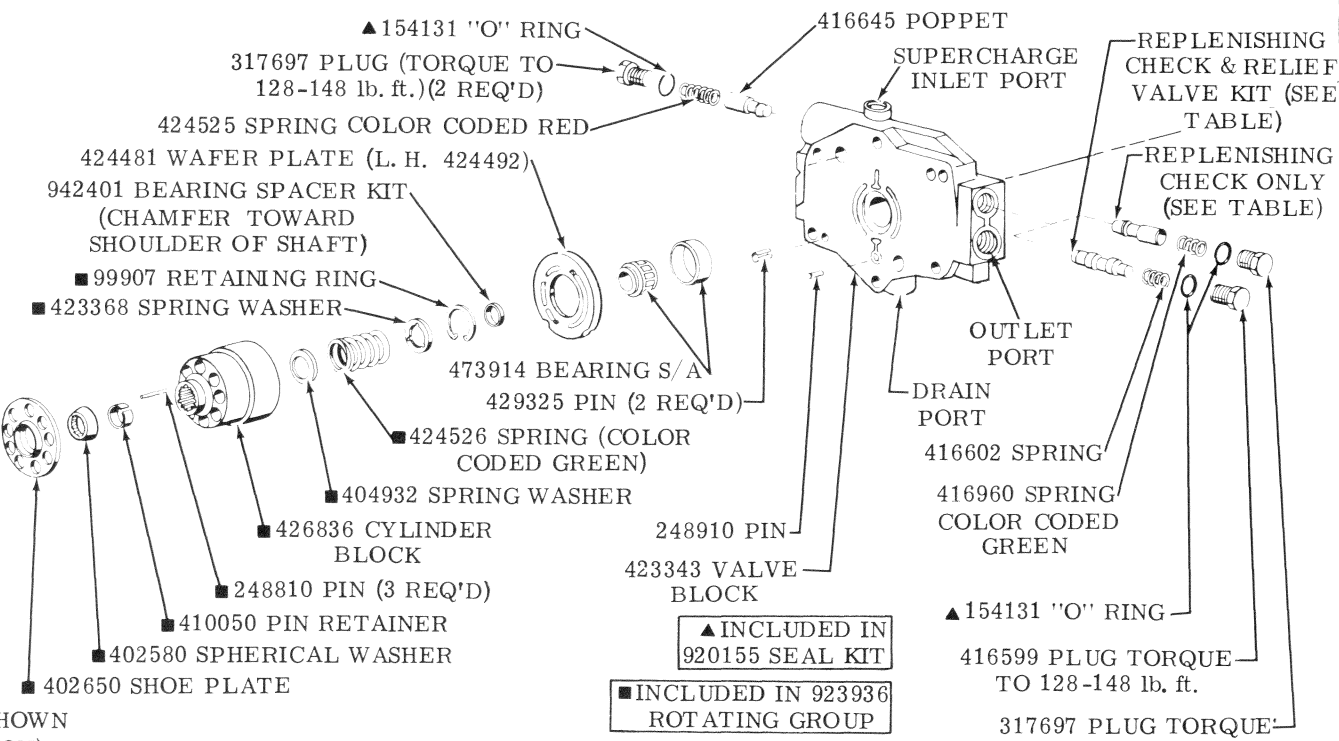
Revised 11-1-89

M-2846-S



MODEL	SCREW (4 REQ'D) TORQUE TO 80 <sup>±</sup> 5 lb. ft.	RING	ROTOR	VANE KIT (12 VANES)	▲"O" RING (2 REQ'D)	CARTRIDGE KIT	PIN (2 REQ'D)
TA19V20*-**7*-****-21	131486	328152	358330	923493	154090	923481	2478
TA19V20*-**8*-****-21		331791				923483	
TA19V20*-**9*-****-21		331789				923484	
TA19V20*-**10*-****-21		374309				923620	
TA19V20*-**11*-****-21		328156				923482	
TA19V20*-**12*-****-21	1319	331806	358334	923479	923486	9603	
TA19V20*-**13*-****-21	331807	923487					

— SERVICED IN CARTRIDGE KIT —



MODEL	REPLENISHING CHECK AND RELIEF VALVE KIT (2 REQ'D)	REPLENISHING CHECK (2 REQ'D)
TA19V20**-**R	942429 - 5000 PSI	—
TA19V20**-001	942430 - 3500 PSI	—
TA19V20**-000	NONE	416645
TA19V20**-014	942428 - 3000 PSI	—
TA19V20**-016	942427 - 4000 PSI	—
TA19V20**-53	941189 - 4500 PSI	—

**CAUTION**  
Replenishing check/reliefs and replenishing check valves are used in any combination in this equipment. The combinations are determined by the application. DO NOT interchange valve positions or a major malfunction of the equipment may result.