

MODEL CODE BREAKDOWN

TA 19 V2010 * * -2 * * ** - ** * * * * * -2* - ***

1 2 3 4 5 6 7 8 9 10 11 12 13 14 15 16 17

1	Transmission pump
2	Flow rating @ 19 USgpm @ 1800 rpm
3	Auxiliary vane pump
4	Vane pump cover F – Flow control P – Priority flow Omitted – STD.
5	Rotation (Viewed from shaft end) R – Right hand (CW) L – Left hand (CCW)
6	Input shaft 2 – SAE B–B Spline
7	Control pintle (Location viewed from shaft end w/drain port up.) A – Right hand B – Left hand
8	Main relief valve R – Relief valve O – No relief valve
9	Shaft end vane pump ring capacity (Capacity at 1200 rpm) 07 – 7 USgpm 11 – 11 USgpm 08 – 8 USgpm 12 – 12 USgpm 09 – 9 USgpm 13 – 13 USgpm
10	Cover end vane pump ring capacity (Capacity at 1200 rpm) 04 – 4 USgpm 06 – 6 USgpm 05 – 5 USgpm 07 – 7 USgpm

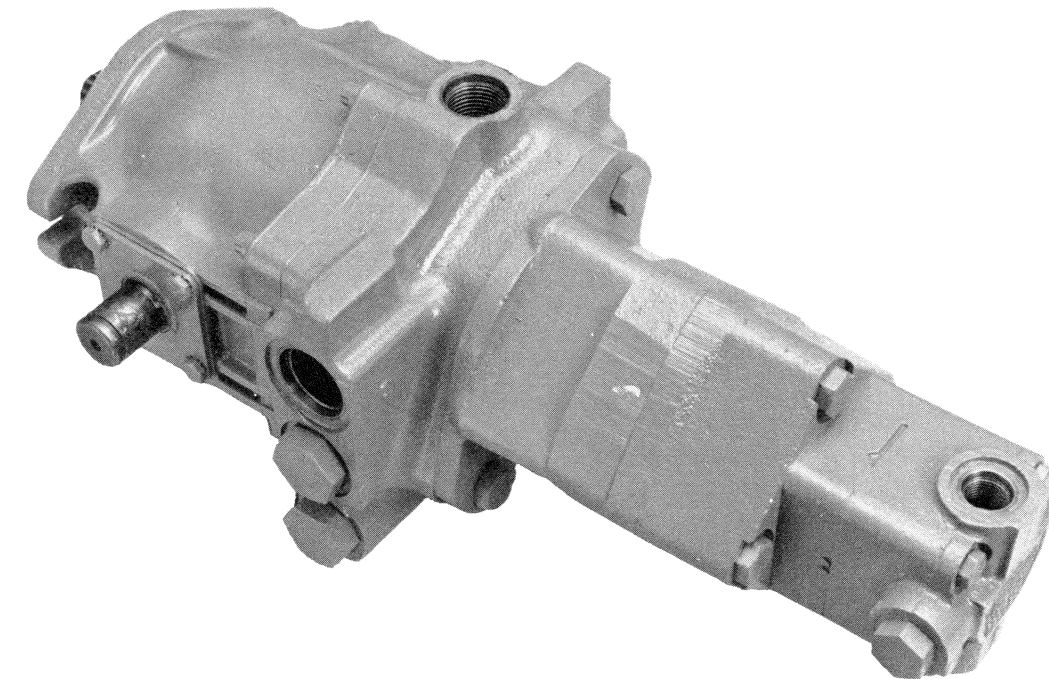
11	Vane pump #1 outlet position (Viewed from cover end) A – 45° CCW from case drain C – 135° CW from case drain
12	Vane pump inlet positions (Viewed from cover end) A – Opposite #1 outlet B – 90° CCW from #1 outlet C – In line with #1 outlet D – 90° CW from #1 outlet
13	Vane pump outlet positions (Viewed from cover end) A – 135° CCW from inlet B – 45° CCW from inlet C – 45° CW from inlet D – 135° CW from inlet
14	Flow rate Orifice in "F" cover: 2, 3, 4, 5, 6, 7, or 8 USgpm Orifice in "P" cover: 1, 2, 3, 4, 5, 6, or 7 USgpm
15	Vane pump relief valve setting A – 250 psi F – 1500 psi B – 500 psi G – 1750 psi C – 750 psi H – 2000 psi D – 1000 psi J – 2250 psi E – 1250 psi K – 2500 psi
16	Design
17	Special

VICKERS
A TRINITY COMPANY

Service Parts Information

Single
Transmission
Pump with
Double
Vane Pump

TA19V2010* –20/21 Design



Vickers, Incorporated

P.O. Box 302
Troy, Michigan 48007-0302

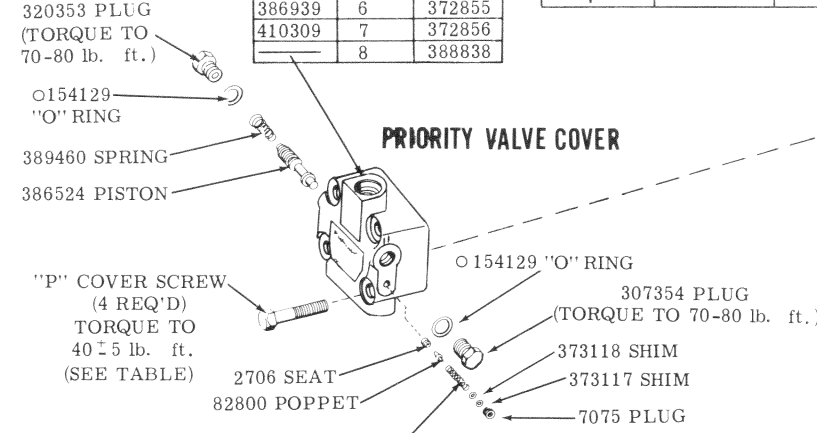
Revised 11-1-89

M-2833-S

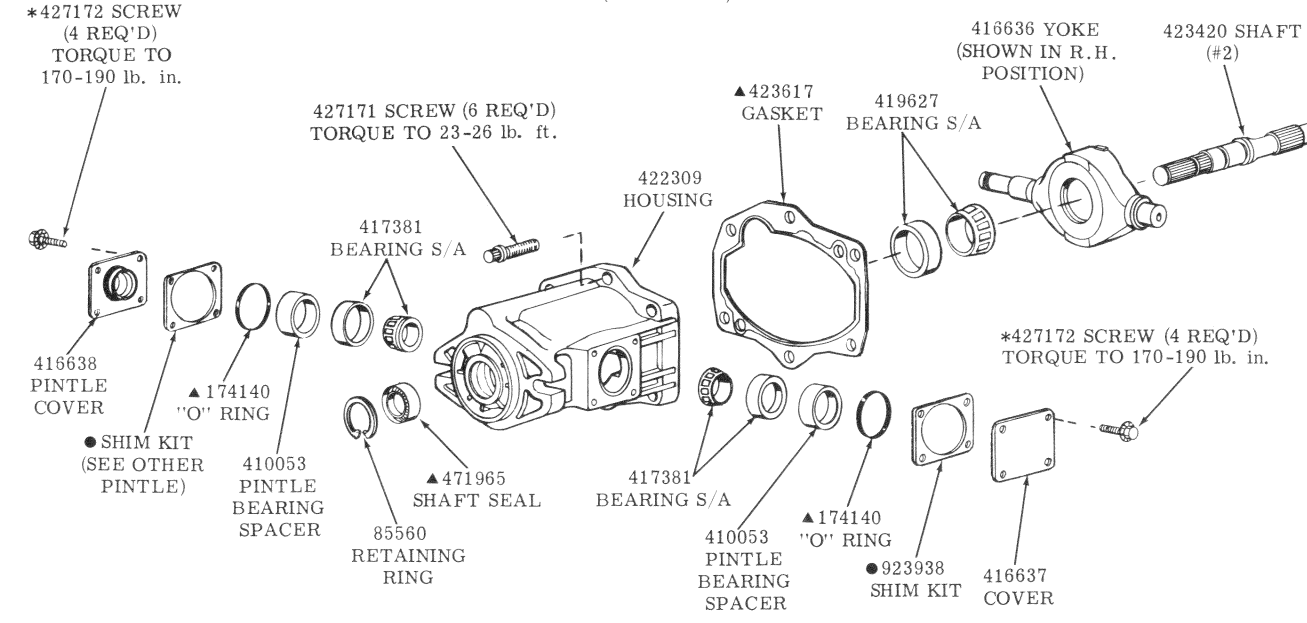
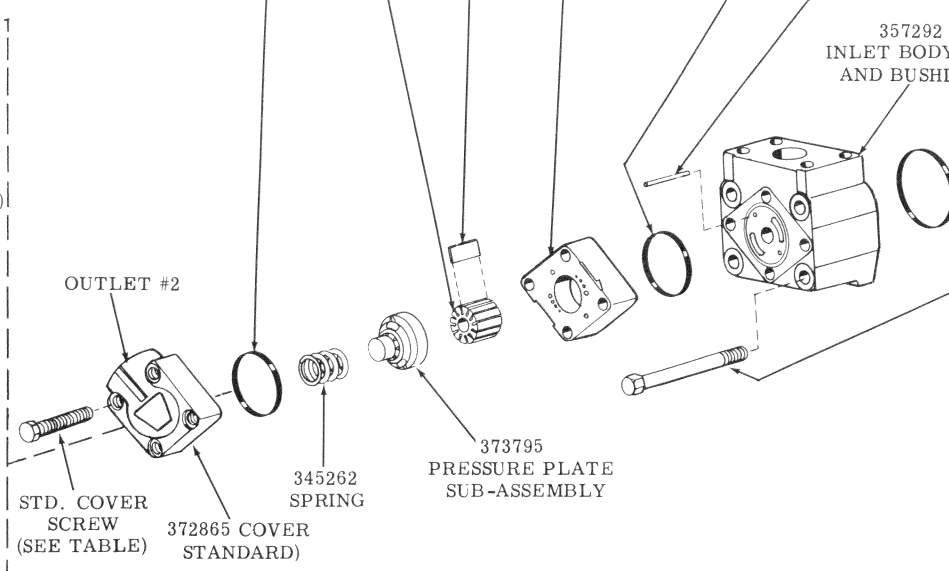
For satisfactory service life of these components, use full flow filtration to provide fluid which meets ISO cleanliness code 16/13 or cleaner. Selections from pressure, return, and in-line filter series are recommended.

"P" COVER	FLOW RATE	"F" COVER
388262	1	
386946	2	372851
386936	3	372852
386937	4	372853
407518	5	372854
386939	6	372855
410309	7	372856
	8	388838

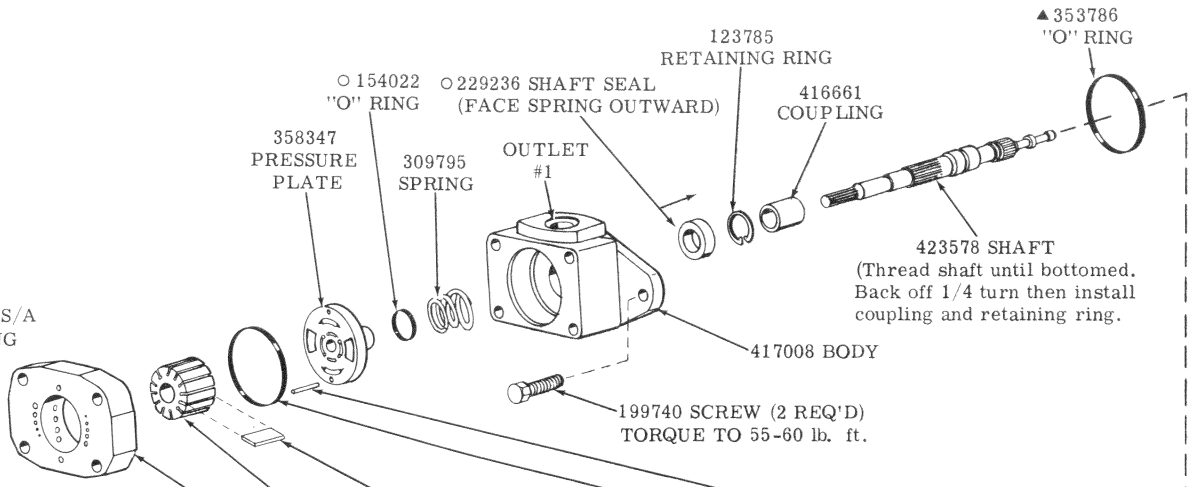
RING CAPACITY (USGPM)	SCREW (4 REQ'D) TORQUE TO 40 ± 5 lb. ft.			COVER END VANE PUMP PARTS						
	"P" COVER	"F" COVER	STD. COVER	"O" RING	ROTOR	VANE KIT (12 VANES)	RING	CARTRIDGE KIT	"O" RING	PIN (2 REQ'D)
4	1278A	295344	108561	199822	351247	923500	317677	923469		2456
5							317678	923468	199823	
6							355641	923497		
7	107889	432511	1278		357286	923501	331813	923496		351963



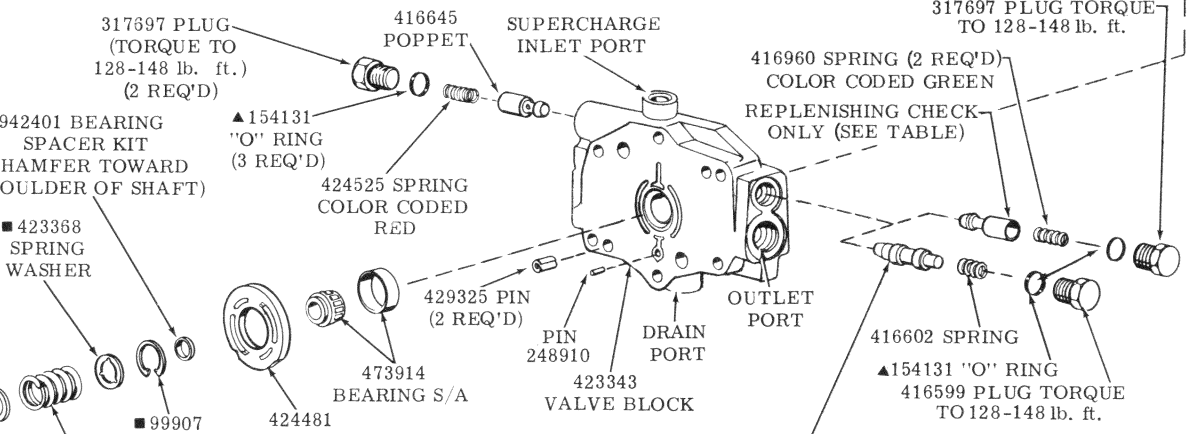
RELIEF VALVE CODE	SPRING	CONTROL VALVE SUB-ASSEMBLY	PRESSURE SETTING
A	252886	229613	250 PSI
B		233018	500 PSI
C	2280	232794	750 PSI
D		232795	1000 PSI
E		232796	1250 PSI
F		232797	1500 PSI
G		232798	1750 PSI
H	2281	232799	2000 PSI
J		233019	2250 PSI
K		233020	2500 PSI



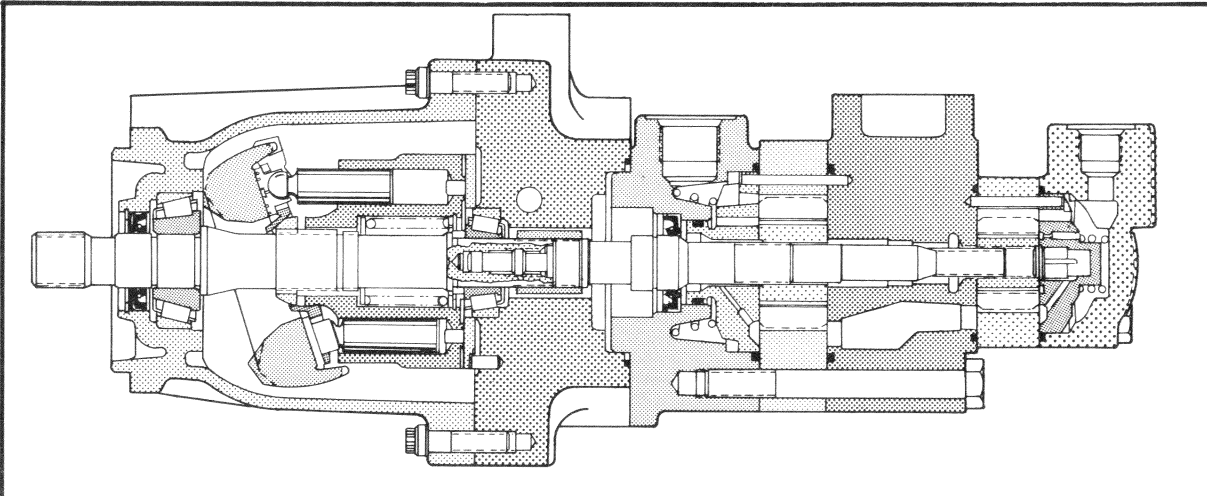
INCLUDED IN	
▲ SEAL KIT PISTON PUMP	923942
● BEARING SPACER KIT	942401
● SHIM KIT	923938
■ ROTATING GROUP KIT	923936
■ PISTON/SHOE S/A KIT (INCLUDES 9 PISTON & SHOE S/A)	923939
○ SEAL KIT VANE PUMP	923577



SCREW (4 REQ'D) TORQUE TO 80 ± 5 lb. ft.	RING	ROTOR	VANE KIT (12 VANES)	CARTRIDGE KIT	"O" RING (2 REQ'D)	PIN (2 REQ'D)	RING CAPACITY (USGPM)
	328152			923494			7
	331791	358335	923493	923495		16662	8
96168	331789			923462	154090		9
	328156	358336	923478	923475		179341	11
9430	331806			923476			12
	331807	358337	923479	923477		7688	13



MODEL	REPLENISHING CHECK AND RELIEF VALVE KIT (2 REQ'D)	REPLENISHING CHECK (2 REQ'D)
TA19V2010**R	942429 - 5000 PSI	
TA19V2010**001	942430 - 3500 PSI	
TA19V2010**0	NONE	416645
TA19V2010**014	942428 - 3000 PSI	
TA19V2010**016	942427 - 4000 PSI	
TA19V2010**024	941031 - 3750 PSI	
TA19V2010**053	941189 - 4500 PSI	
TA19V2010**520	926472 - 5500 PSI	



*EARLY DESIGN USES SCREW AND WASHER ARRANGEMENT. TORQUE SCREW AND WASHER TO 115-125 lbf. in.