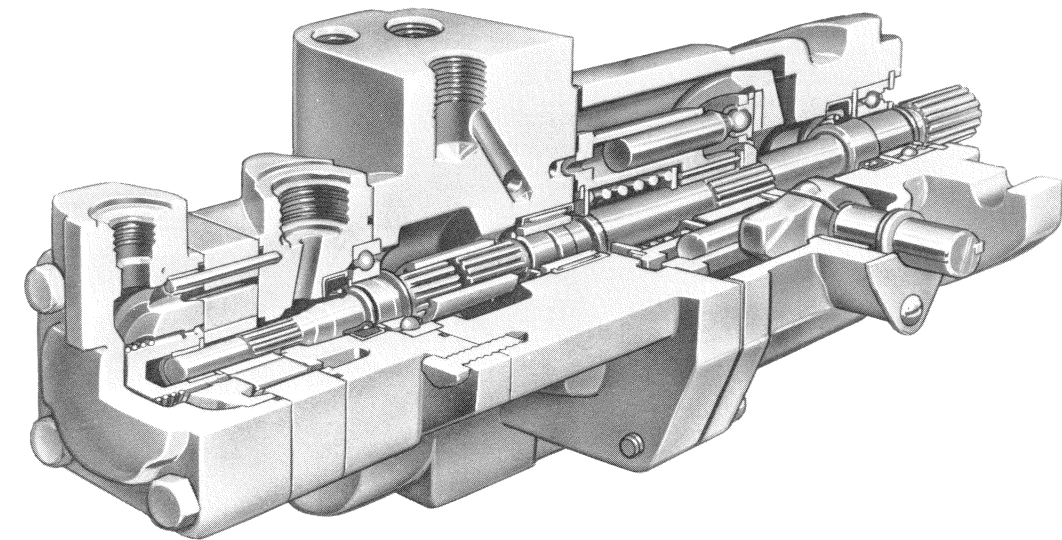




Service Parts Information

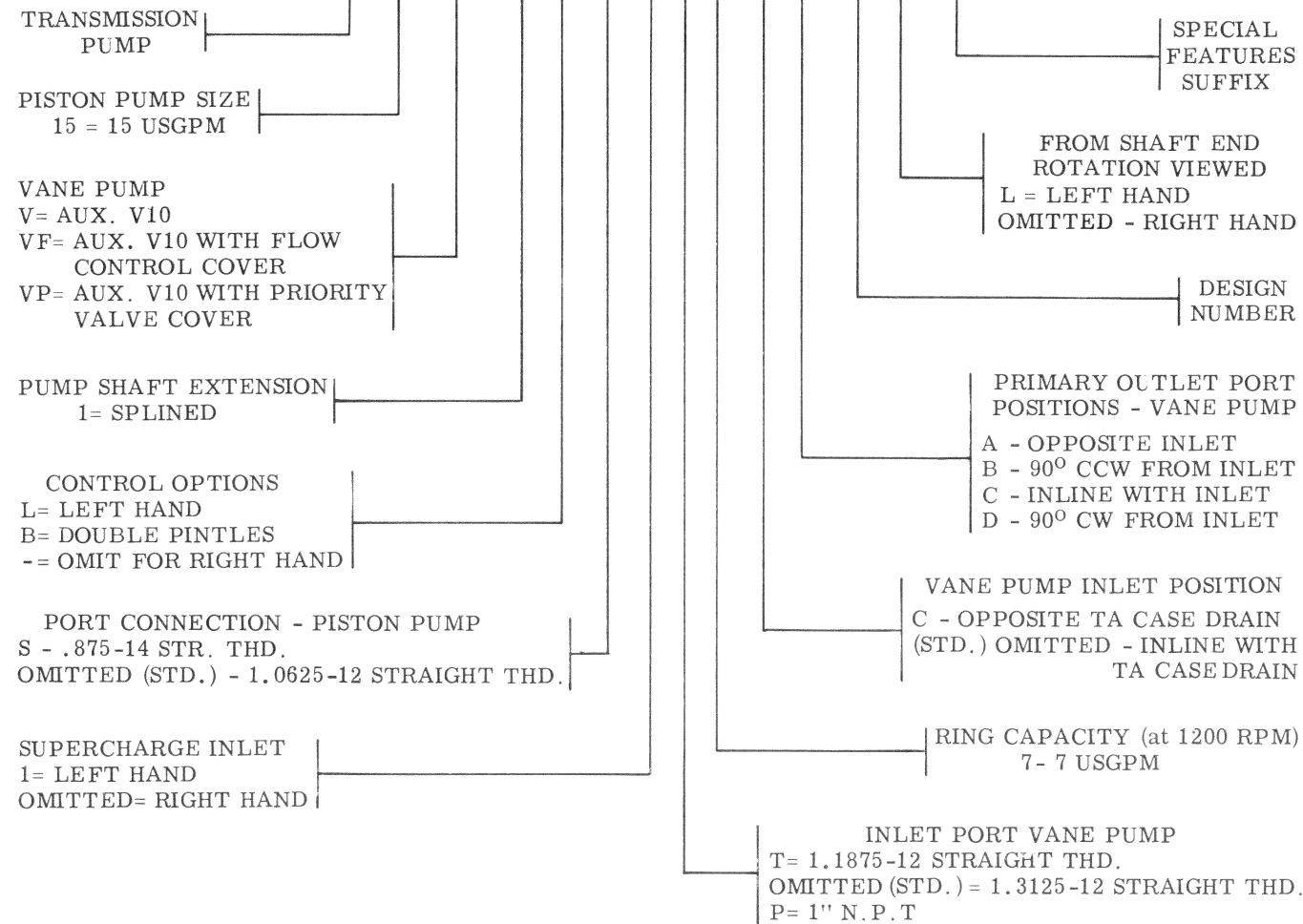
Transmission Package

TA15V10(*)-11 Design



MODEL CODE BREAKDOWN

TA 15 V(*) - 1 - L - S - 1 T 7 - C B - 11 L * * *



Vickers, Incorporated

1401 Crooks Road
Troy, Michigan 48084

Revised 9-1-87

M-2809-S

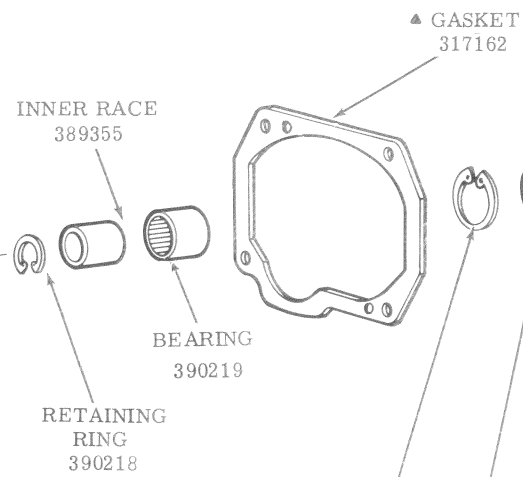
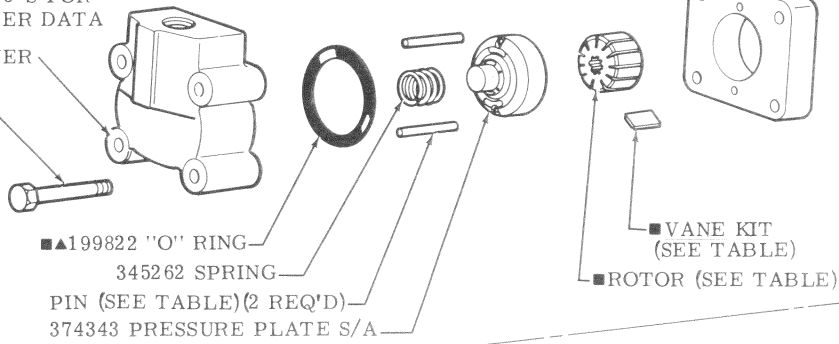
For satisfactory service life of these components, use full flow filtration to provide fluid which meets ISO cleanliness code 19/15 or cleaner. Selections from Vickers OFP, OFR, and OFRS series are recommended.

Litho in U.S.A.

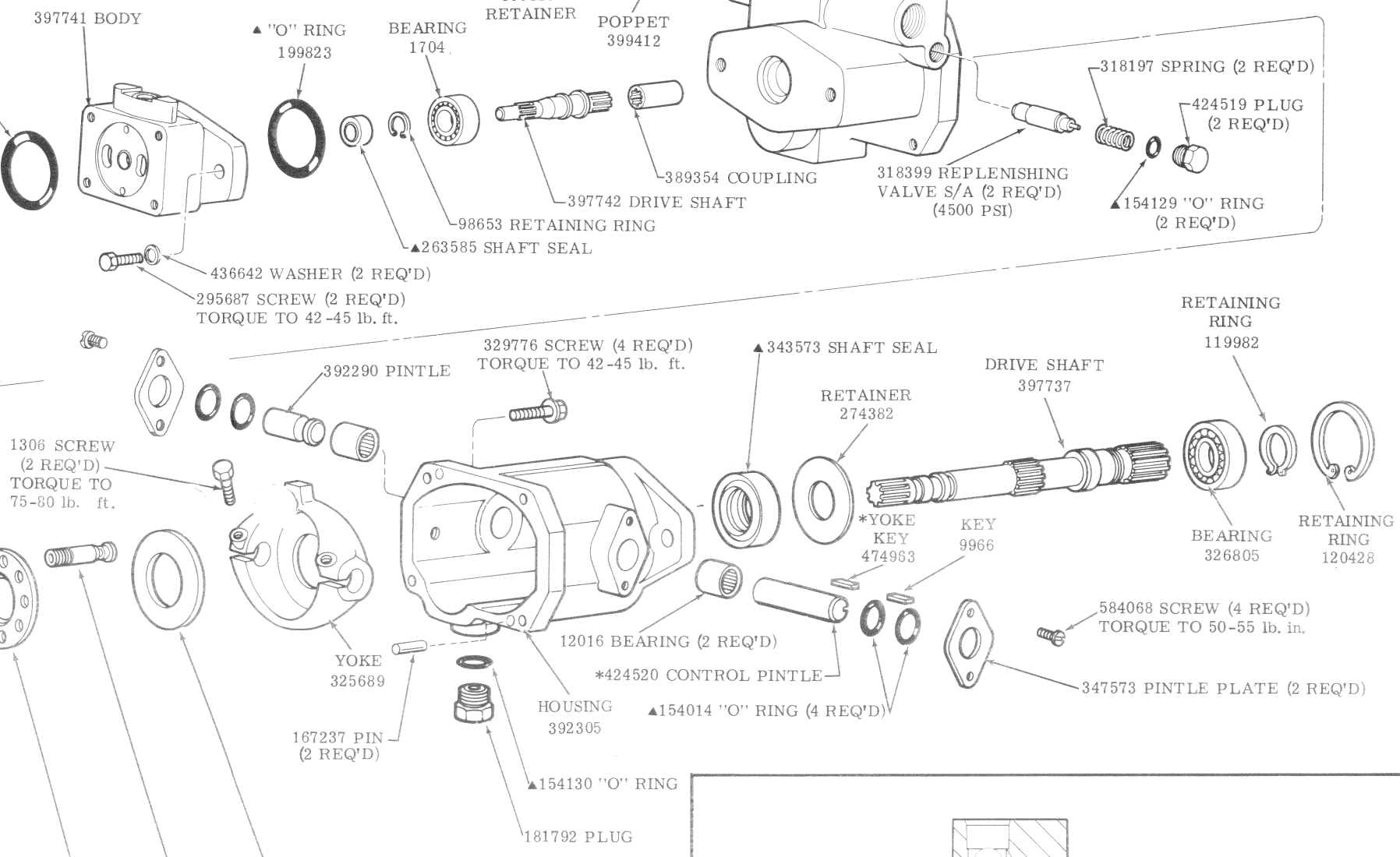
MODEL	ROTOR	VANE KIT (12 VANES)	RING	PIN	SCREW	CART KIT
V10-**1**-20	317681	923499	317674	231042	11156	923471
V10-**2**-20			317675			923470
V10-**3**-20			317676			923496
V10-**4**-20	351247	923500	317677	2456	1278	923469
V10-**5**-20			317678			923468
V10-**6**-20	357286	923501	355641	351963		923497
V10-**7**-20			331813			923498

REFER TO M-2005-S FOR V10F & V10P COVER DATA

372865 COVER
SCREW (SEE TABLE) (TORQUE 40 ± 5 lb. ft.)



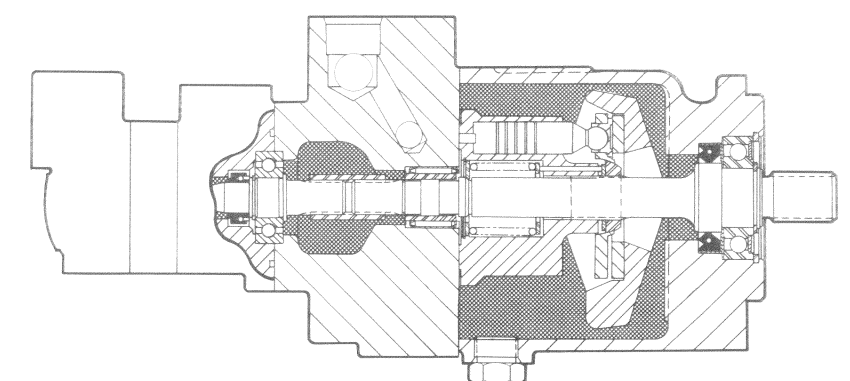
MODEL DESIGNATION	RETAINING RING	LIFT LIMITER	SPRING	THRUST WASHER	CYLINDER BLOCK	PINS (3 REQ'D)	SPHERICAL WASHER	SHOE PLATE	PISTON KIT (9 PISTONS)	SWASH PLATE	ROTATING GROUP KIT
	SERVICED IN ROTATING GROUP KIT										
TA15V**-11	93509	245223	247294	241954	260860	248811	423324	275961	941887	239077	923062



*INCLUDED IN 942425 CONTROL PINTLE KIT

▲ INCLUDED IN 923834 SEAL KIT

■ INCLUDED IN CARTRIDGE KIT



ASSEMBLY VIEW