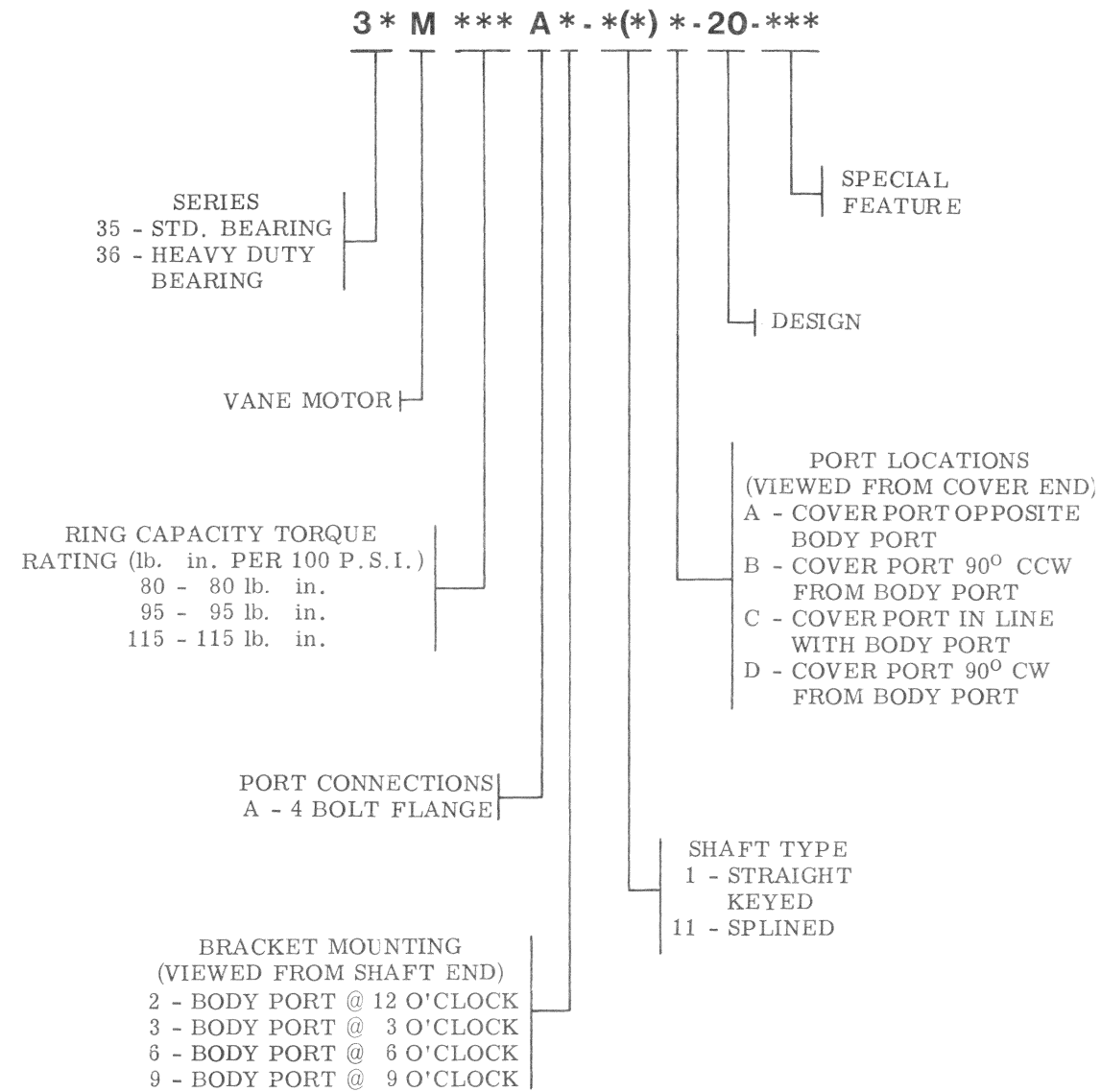


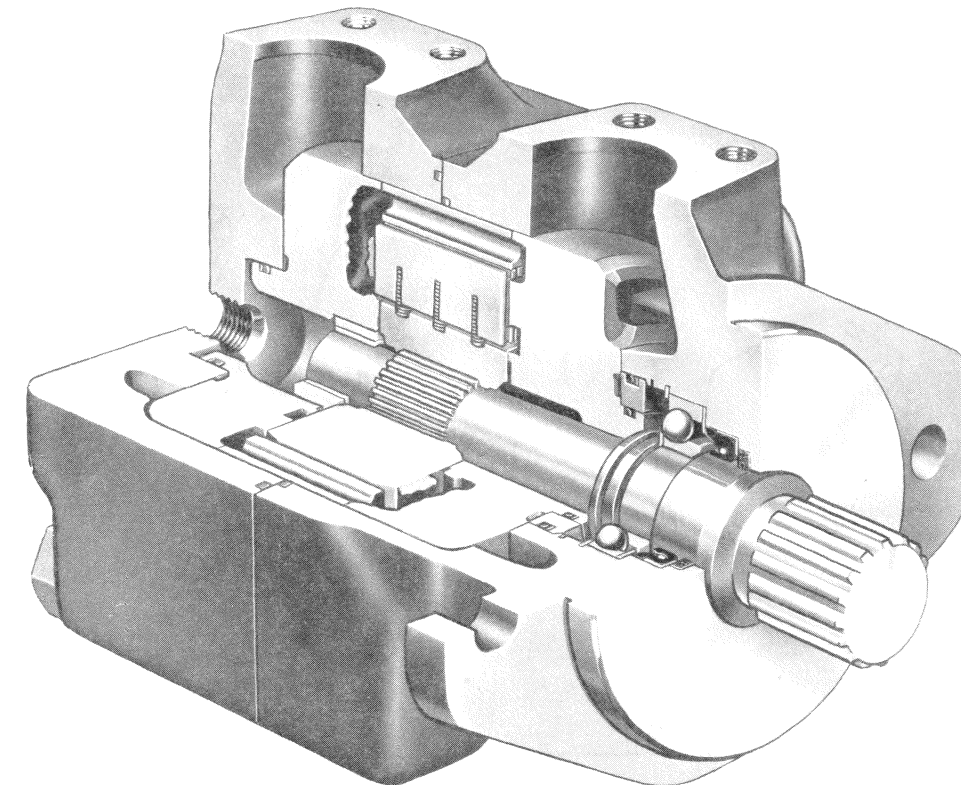
# Service Parts Information

## MODEL CODE BREAKDOWN



### Vane Motors

35M & 36M Series  
-20 Design



Vickers, Incorporated

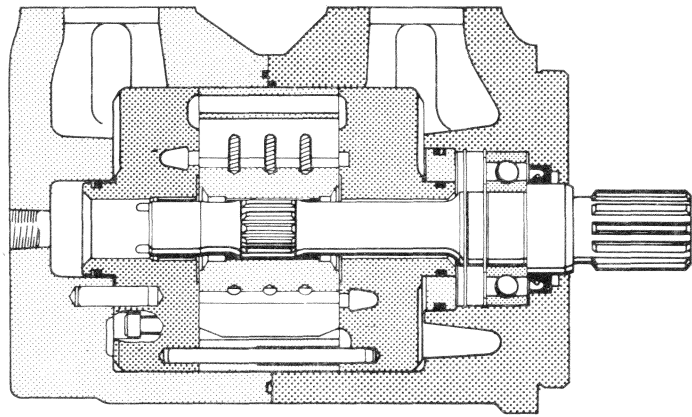
P.O. Box 302  
Troy, Michigan 48007-0302

Revised 9-1-85

M-2742-S

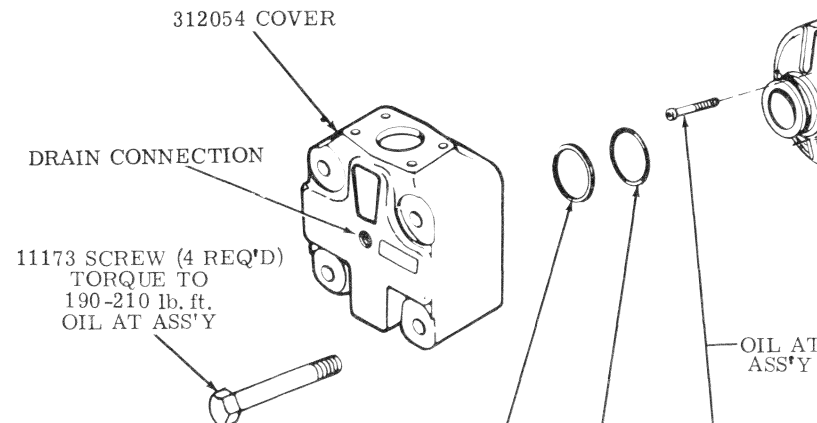
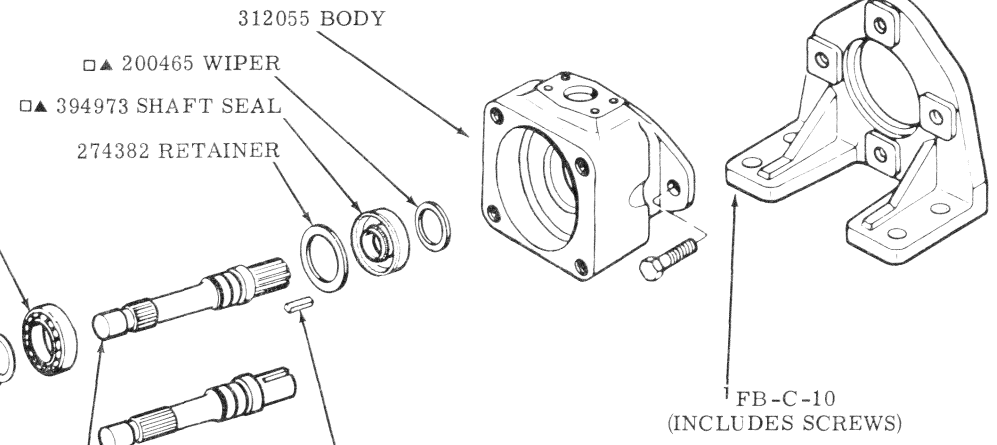
For satisfactory service life of these components, use full flow filtration to provide fluid which meets ISO cleanliness code 18/15 or cleaner. Selections from Vickers OFP, OFR, and OFRS series are recommended.

Litho in U.S.A.



□NOTE  
Saturate the felt wiper with oil before assembly. Also, apply a small amount of grease to inner circumference of seal before installation of shaft. Assemble seal with lip toward bearing.

MODEL DESIGNATION	BEARING
35M**-**20	14654
36M**-**20	16058



312056 HUB ADAPTER

119982 RETAINING RING  
 237832 LOCK RING

SHAFT	KEY	MODEL DESIGNATION
310872	217596	3*M ** - 1* 20
310873	—	3*M ** - 11* 20

▲INCLUDED IN 923163 SEAL KIT

MODEL DESIGNATION	CARTRIDGE KIT	BACK-UP RING	"O" RING	SCREW (2 REQ'D) TORQUE TO 8-12 lb. ft.	PRESSURE PLATE SUB-ASSEMBLY (INCLUDES BUSHING AND PINS)	ROTOR	VANE KIT 10 VANES 30 SPRINGS	PIN (2 REQ'D)	RING	PRESSURE PLATE	"O" RING	BACK-UP RING	"O" RING	BACK-UP RING	"O" RING	"O" RING
— THESE PARTS ARE SERVICED IN CARTRIDGE KIT —																
3*M 80* - ** 20	923165								310870							
3*M 95* - ** 20	923166	▲ 271735	▲ 199814	255837	310877	310874	923164	216603	310868	309430	▲ 199814	▲ 271735	▲ 154083	▲ 271794	▲ 312092	▲ 276617
3*M 115* - ** 20	923167								310871							