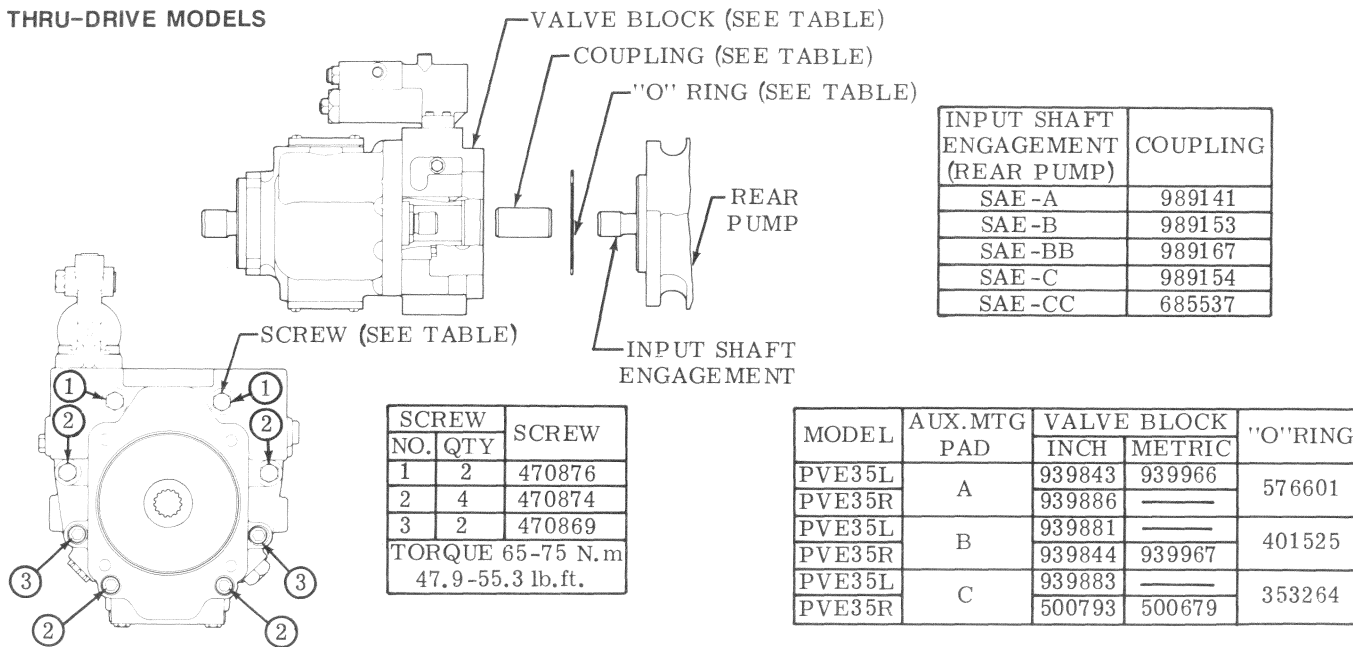


Service Parts Information

Heavy Duty
Piston Pump
Standard/
Thru-Drive

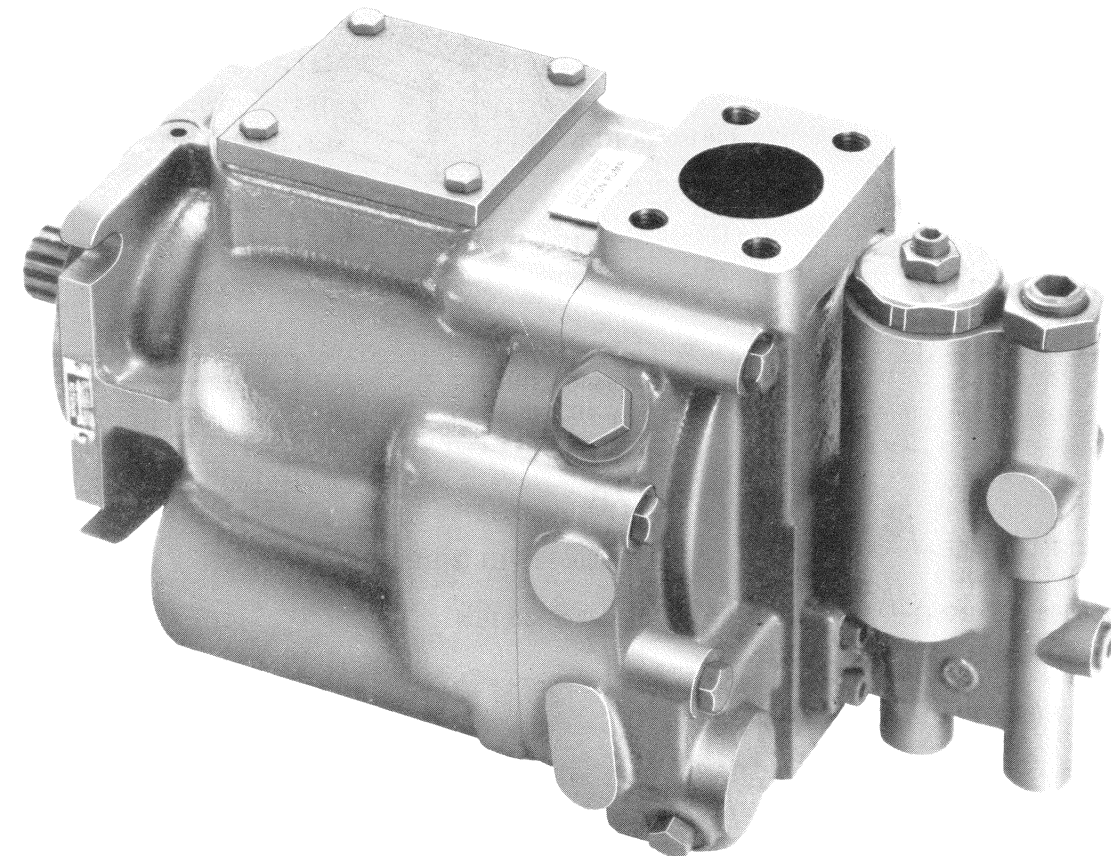
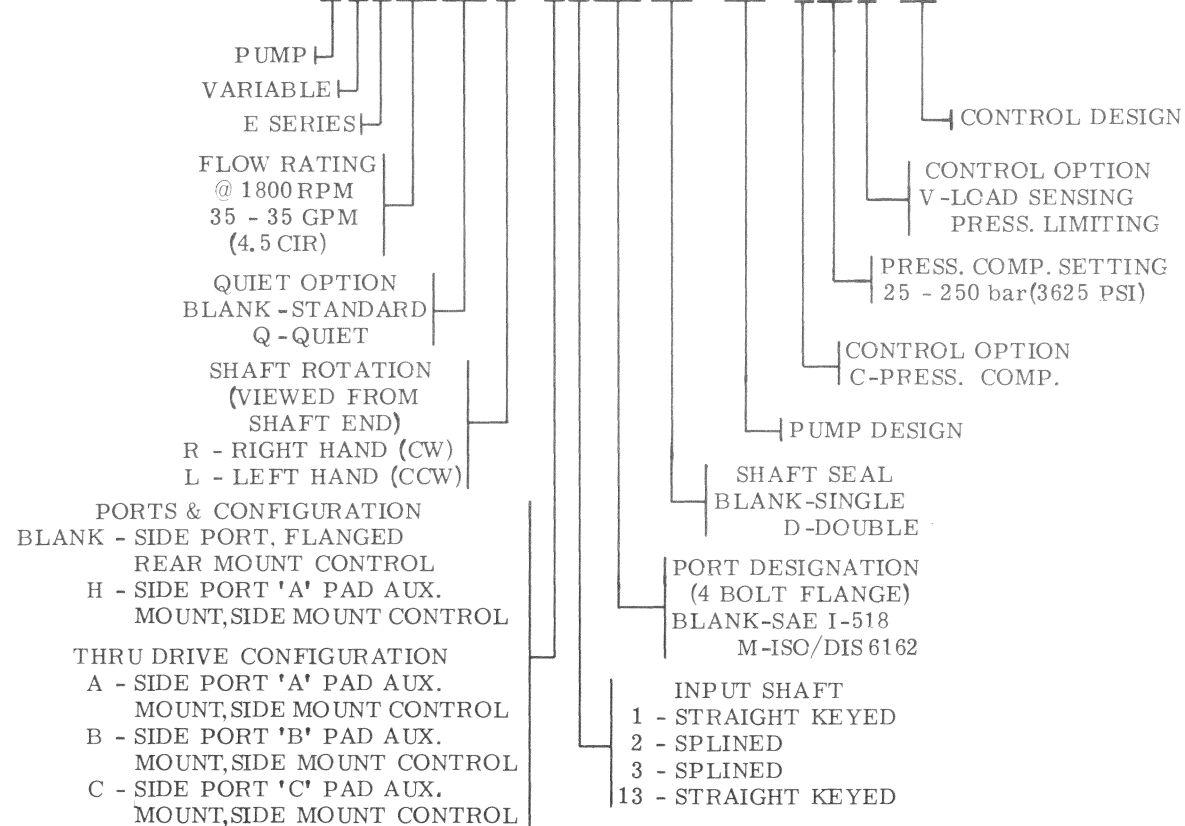
PVE35(Q)*-*(M)(D)-22-C25(V)-21

THRU-DRIVE MODELS



MODEL CODE BREAKDOWN

PVE35(Q)*-*(M)(D)-22-C25V-21



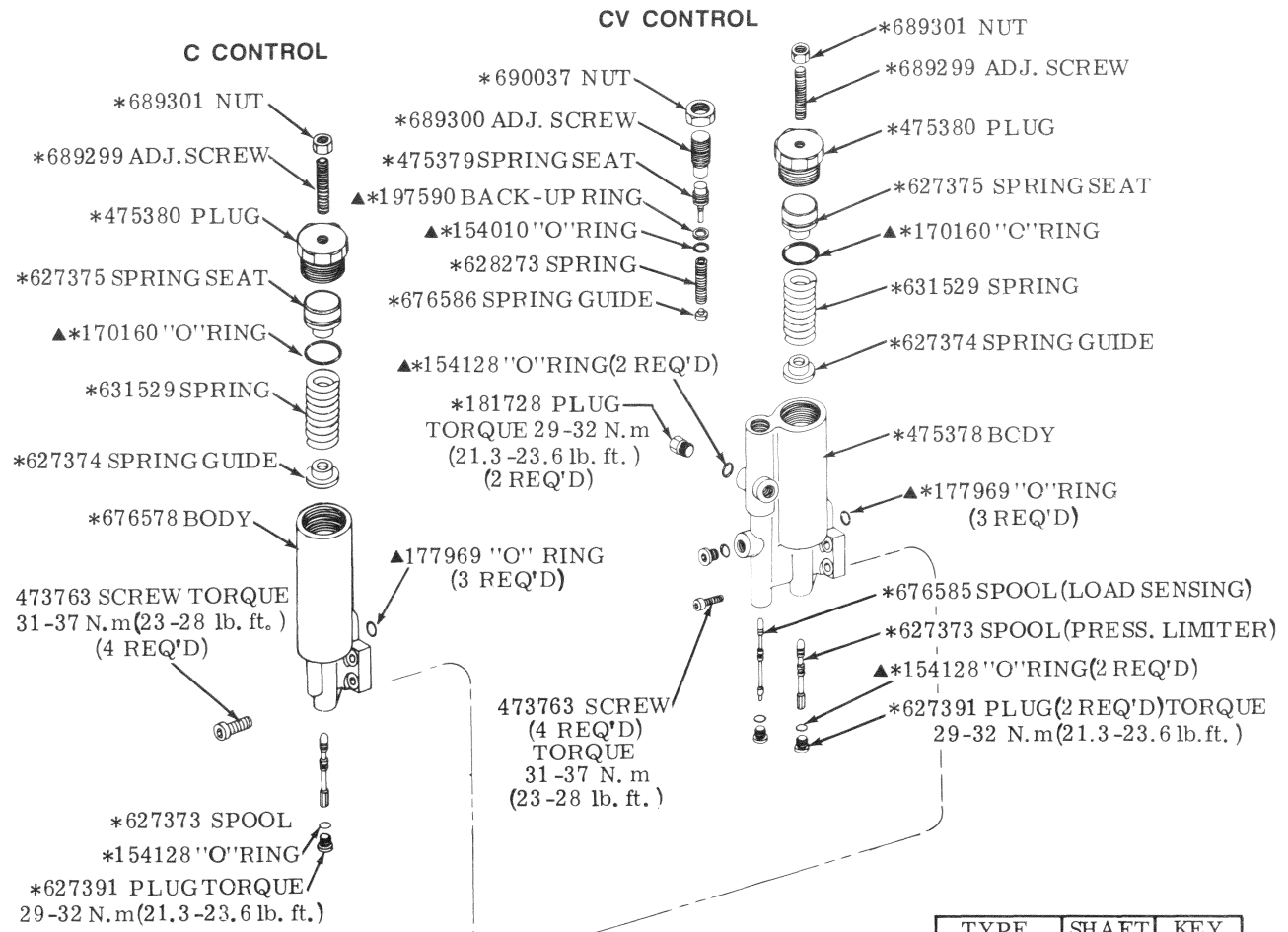
Vickers, Incorporated

P.O. Box 302
Troy, Michigan 48007-0302

12-1-86

M-2247-S

For satisfactory service life of these components, use full flow filtration to provide fluid which meets ISO cleanliness code 19/15 or cleaner. Selections from Vickers OFP, OFR, and OFRS series are recommended.

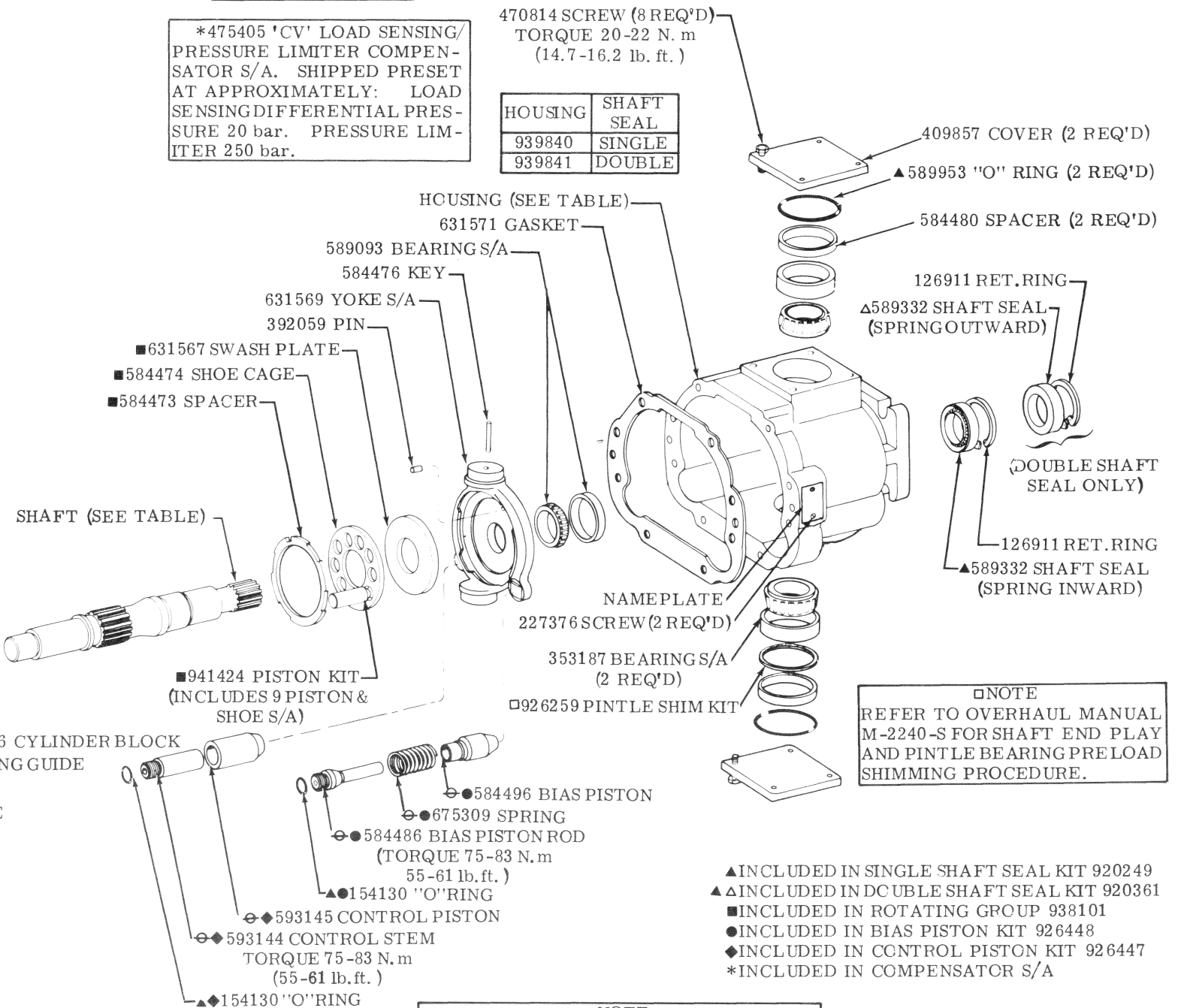


*475407 'C' PRESSURE COMPENSATOR S/A PRESET AT 250 bar.

*475405 'CV' LOAD SENSING/PRESSURE LIMITER COMPENSATOR S/A. SHIPPED PRESET AT APPROXIMATELY: LOAD SENSING DIFFERENTIAL PRESSURE 20 bar. PRESSURE LIMITER 250 bar.

470814 SCREW (8 REQ'D) TORQUE 20-22 N.m (14.7-16.2 lb. ft.)

HOUSING	SHAFT SEAL
939840	SINGLE
939841	DOUBLE



TYPE	SHAFT	KEY
1 (STD)	475243	114516
2 (STD)	680609	—
3 (STD)	681889	—
13 (THRU)	475259	140282

MODEL	VALVE BLOCK		VALVE PLATE
	INCH	METRIC	
PVE35R	939882	—	627438
PVE35QR	—	—	681826
PVE35L	939968	939842	627437
PVE35QL	—	—	681825
PVE35L-H	939885	—	627437

NOTE REFER TO OVERHAUL MANUAL M-2240-S FOR SHAFT END PLAY AND PINTLE BEARING PRELOAD SHIMMING PROCEDURE.

NOTE PARTS ARE SHOWN FOR LEFT HAND SHAFT ROTATION. THE POSITION OF CONTROL AND BIAS PISTONS ARE REVERSED FOR RIGHT HAND ROTATION.

- ▲ INCLUDED IN SINGLE SHAFT SEAL KIT 920249
- ▲ INCLUDED IN DOUBLE SHAFT SEAL KIT 920361
- INCLUDED IN ROTATING GROUP 938101
- INCLUDED IN BIAS PISTON KIT 926448
- ◆ INCLUDED IN CONTROL PISTON KIT 926447
- * INCLUDED IN COMPENSATOR S/A

