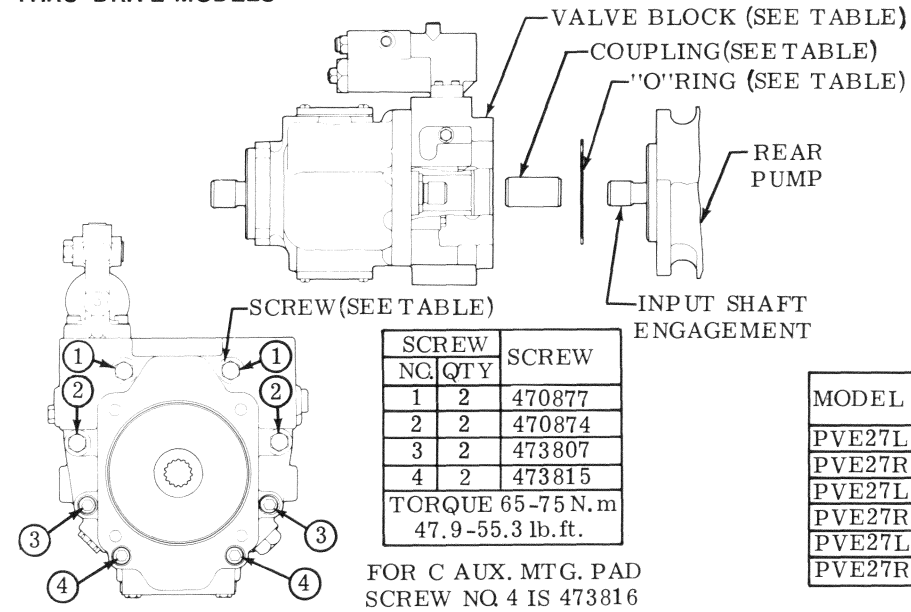


# Service Parts Information

Heavy Duty  
Piston Pump  
Standard/  
Thru-Drive

PVE27-\*\*-\*\*(M)(D)-22-C25(V)-21

**THRU-DRIVE MODELS**



INPUT SHAFT ENGAGEMENT (REAR PUMP)	COUPLING
SAE -A	685430
SAE -B	685429
SAE -BB	685428
SAE -C	429368

SCREW NO.	QTY	SCREW
1	2	470877
2	2	470874
3	2	473807
4	2	473815

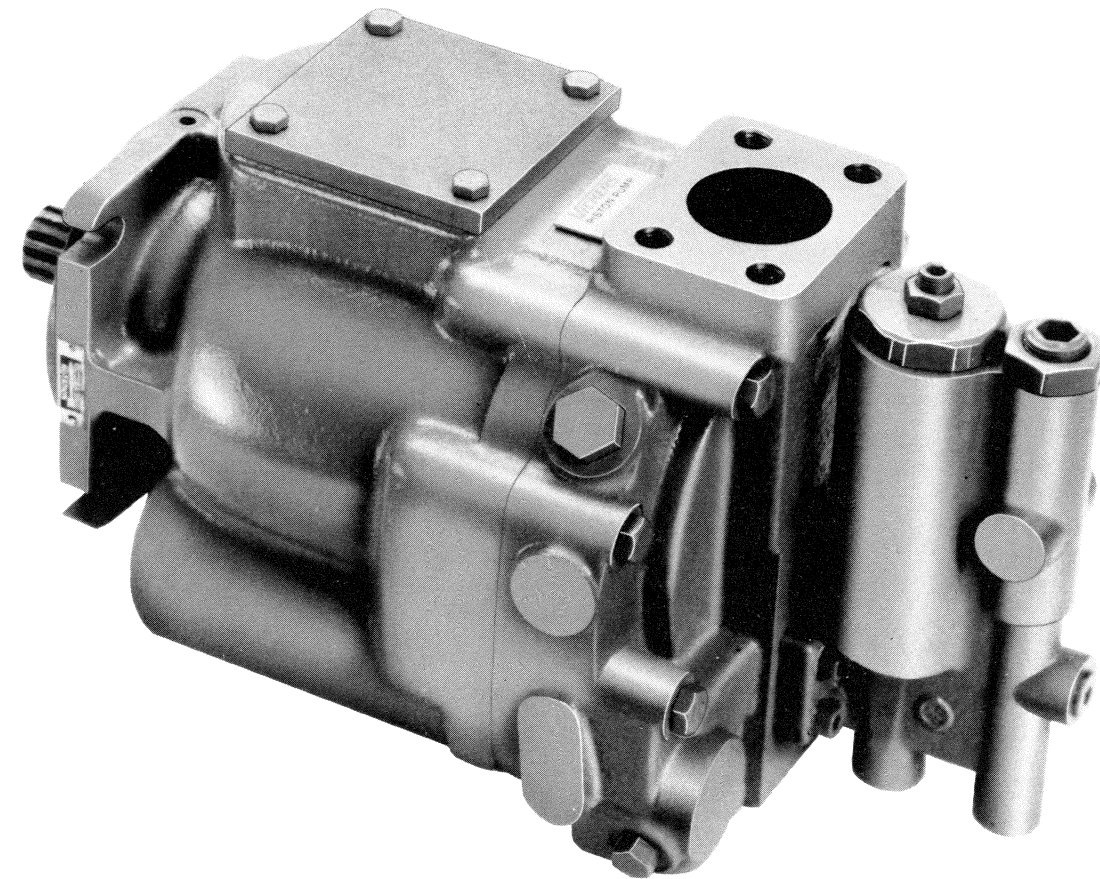
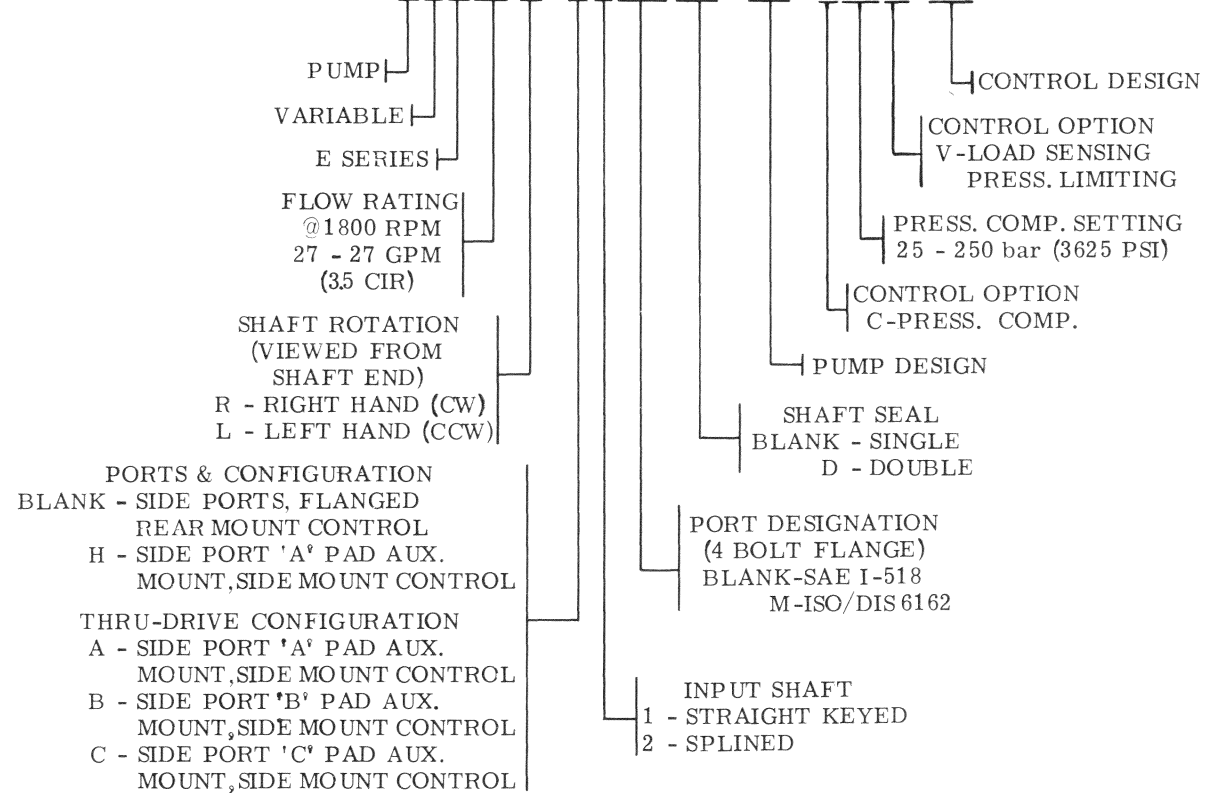
TORQUE 65-75 N.m  
47.9-55.3 lb.ft.

MODEL	AUX. MTG PAD	VALVE BLOCK		'O'RING
		INCH	METRIC	
PVE27L	A	—	521980	576601
PVE27R		939835	—	
PVE27L	B	939834	—	401525
PVE27R		939878	—	
PVE27L	C	939831	—	353264
PVE27R		939830	—	

FOR C AUX. MTG. PAD  
SCREW NO. 4 IS 473816

**MODEL CODE BREAKDOWN**

**PVE27\*-\*\*(M)(D)-22-C25V-21**



Vickers, Incorporated

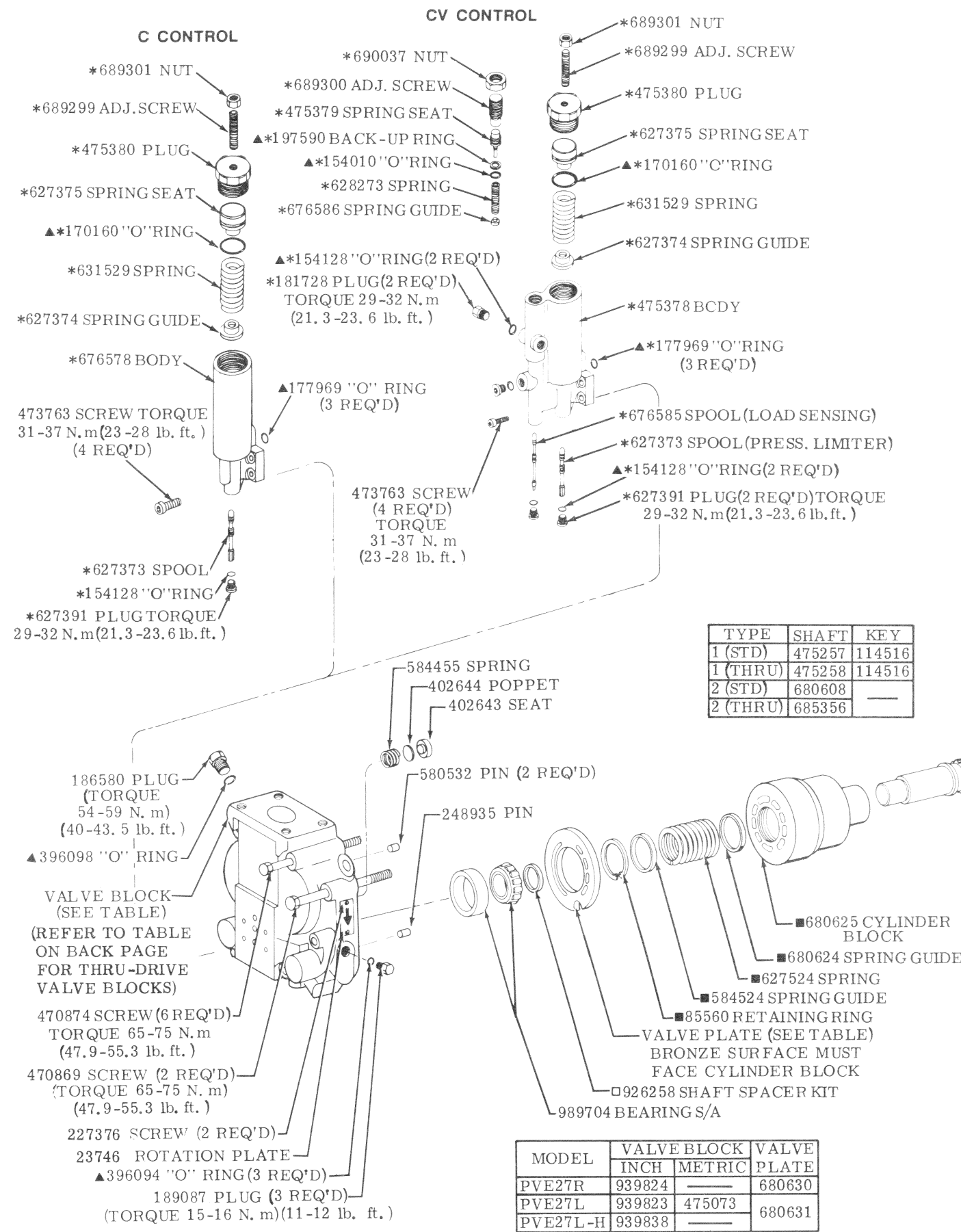
P.O. Box 302  
Troy, Michigan 48007-0302

RELEASED 12-1-86

M-2246-S

For satisfactory service life of these components, use full flow filtration to provide fluid which meets ISO cleanliness code 19/15 or cleaner. Selections from Vickers OFP, OFR, and OFRS series are recommended.

Litho in U. S. A.



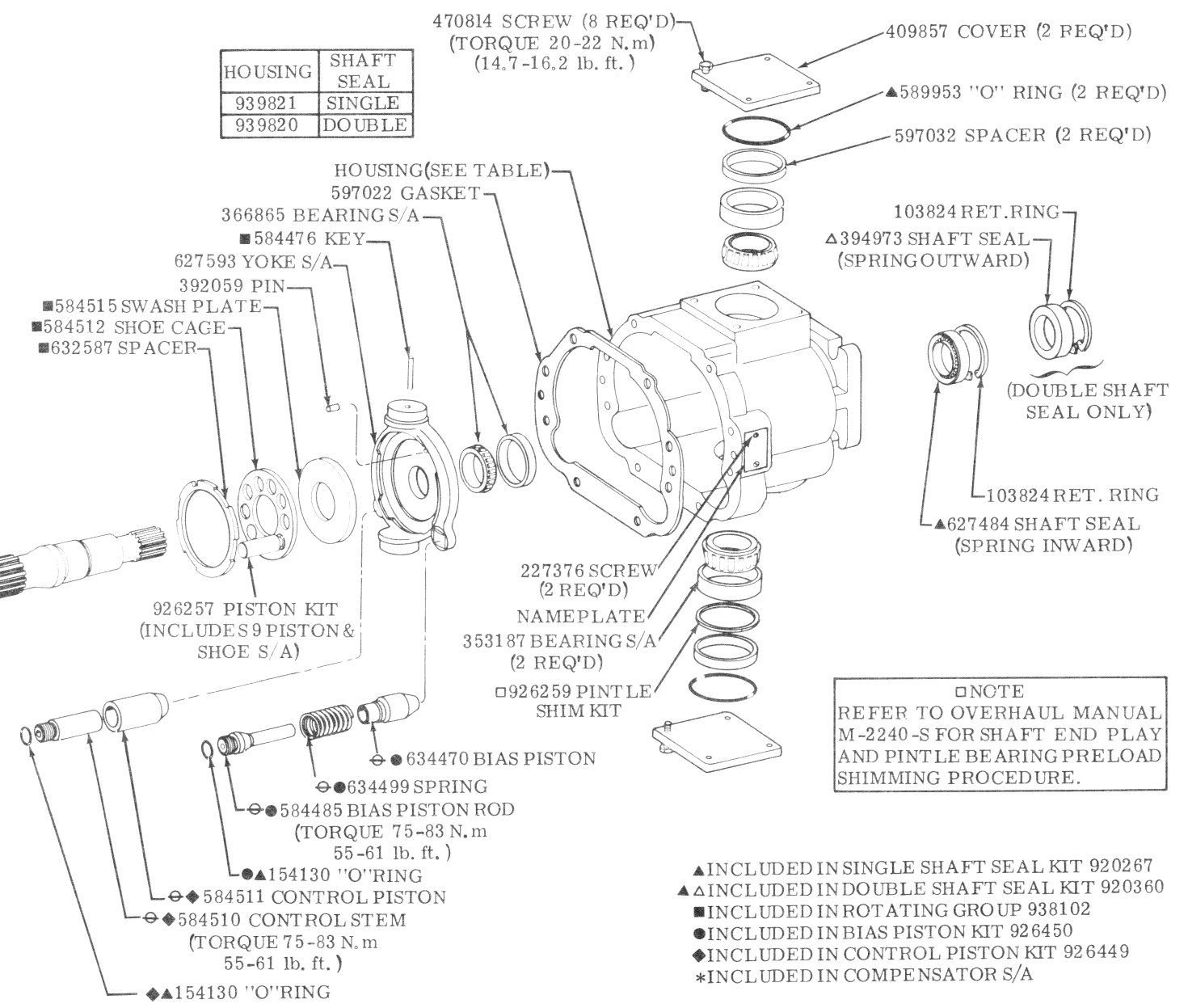
TYPE	SHAFT	KEY
1 (STD)	475257	114516
1 (THRU)	475258	114516
2 (STD)	680608	—
2 (THRU)	685356	—

MODEL	VALVE BLOCK		VALVE PLATE
	INCH	METRIC	
PVE27R	939824	—	680630
PVE27L	939823	475073	680631
PVE27L-H	939838	—	680631

\*475407 'C' PRESSURE COMPENSATOR S/A PRESET AT 250 bar.

\*475405 'CV' LOAD SENSING/PRESSURE LIMITER COMPENSATOR S/A. SHIPPED PRESET AT APPROXIMATELY: LOAD SENSING DIFFERENTIAL PRESSURE 20 bar. PRESSURE LIMITER 250 bar.

HOUSING	SHAFT SEAL
939821	SINGLE
939820	DOUBLE



NOTE REFER TO OVERHAUL MANUAL M-2240-S FOR SHAFT END PLAY AND PINTLE BEARING PRELOAD SHIMMING PROCEDURE.

- ▲ INCLUDED IN SINGLE SHAFT SEAL KIT 920267
- ▲ INCLUDED IN DOUBLE SHAFT SEAL KIT 920360
- INCLUDED IN ROTATING GROUP 938102
- INCLUDED IN BIAS PISTON KIT 926450
- ◆ INCLUDED IN CONTROL PISTON KIT 926449
- \* INCLUDED IN COMPENSATOR S/A

NOTE PARTS ARE SHOWN FOR LEFT HAND SHAFT ROTATION. THE POSITION OF CONTROL AND BIAS PISTONS ARE REVERSED FOR RIGHT HAND ROTATION