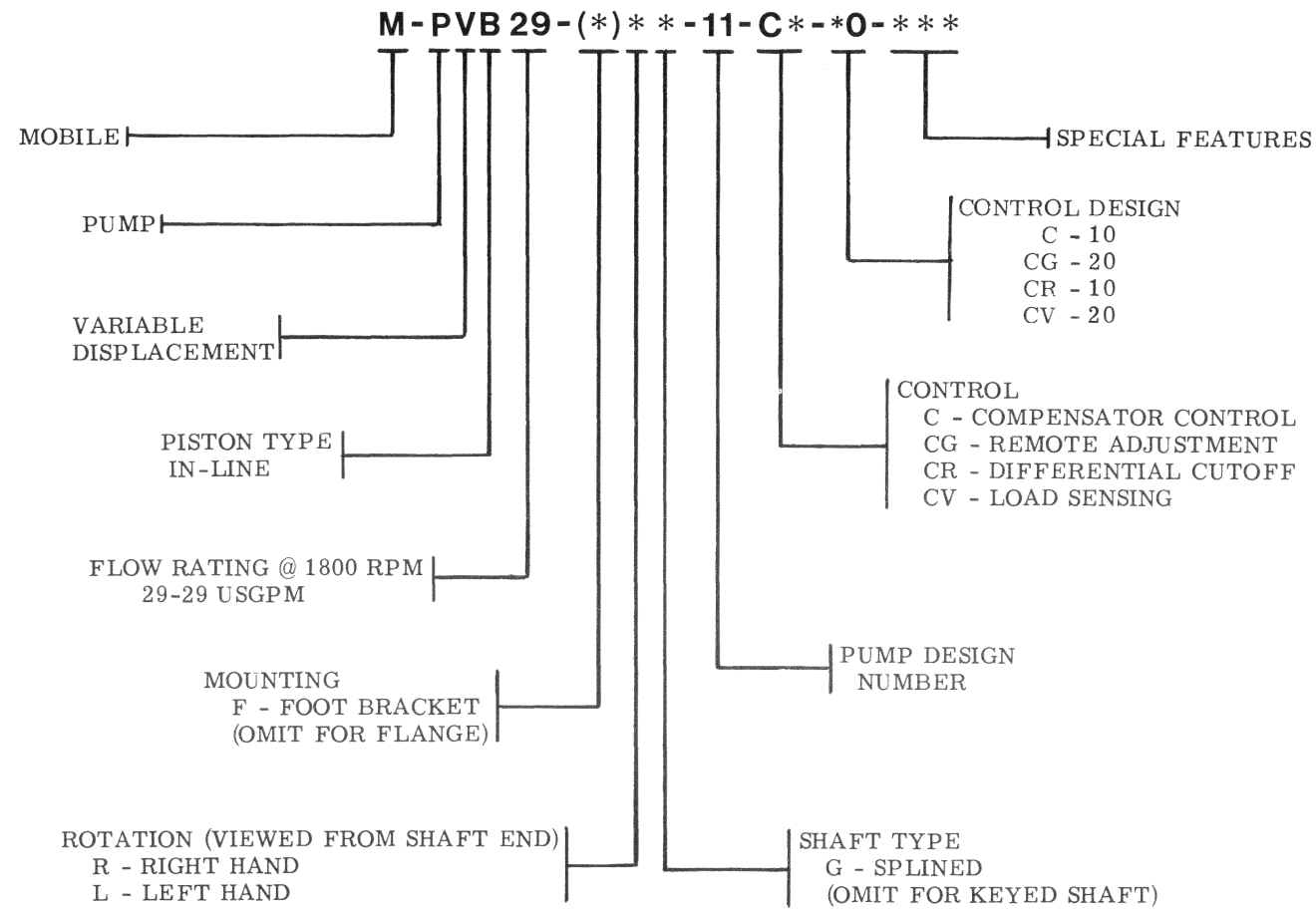
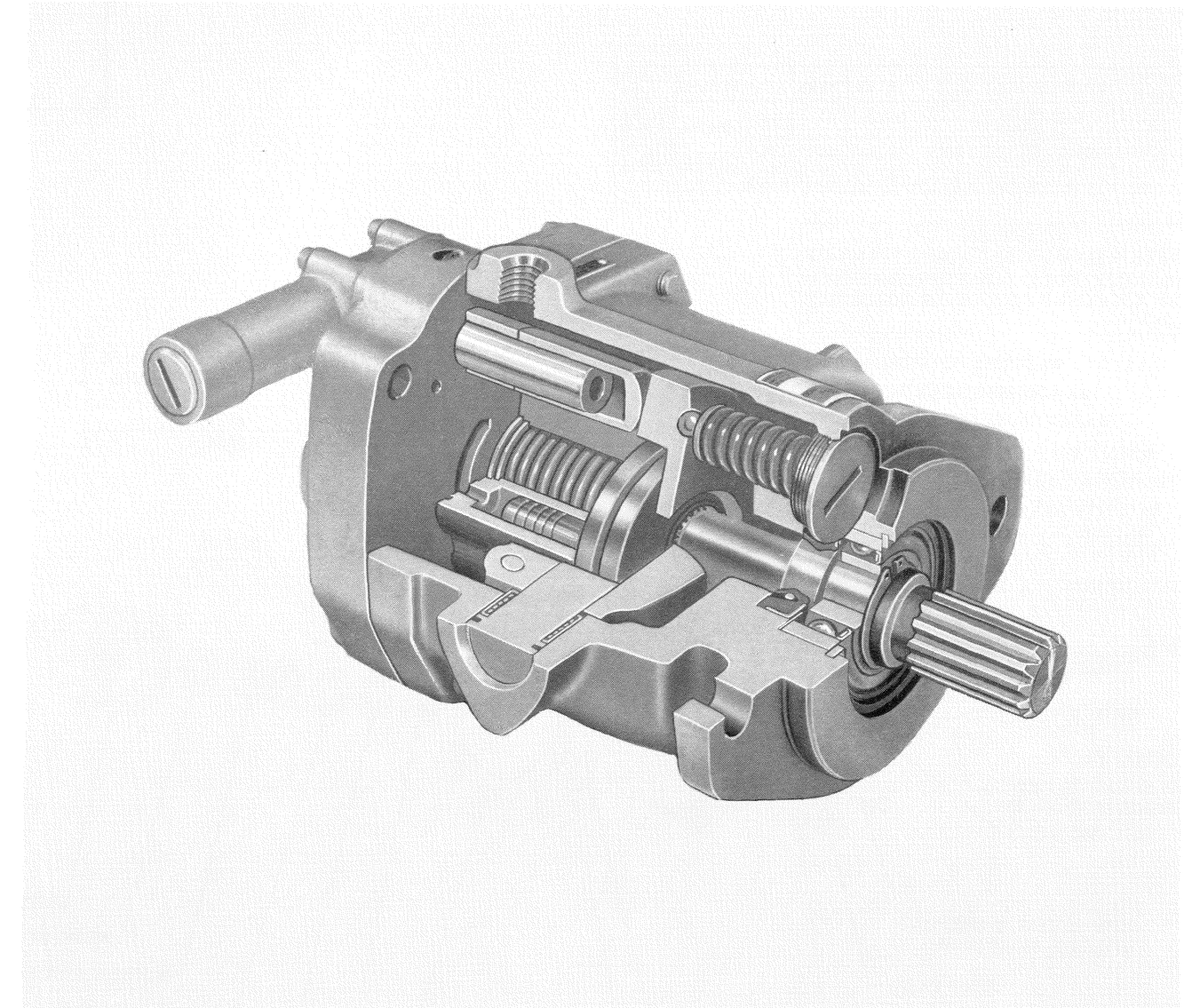


MODEL CODE BREAKDOWN



Variable Inline Piston Pumps

M-PVB29-11



For satisfactory service life of these components, use full flow filtration to provide fluid which meets ISO cleanliness code 16/13 or cleaner. Selections from Vickers OFP, OFR, and OFRS series are recommended.

Litho in U.S.A.

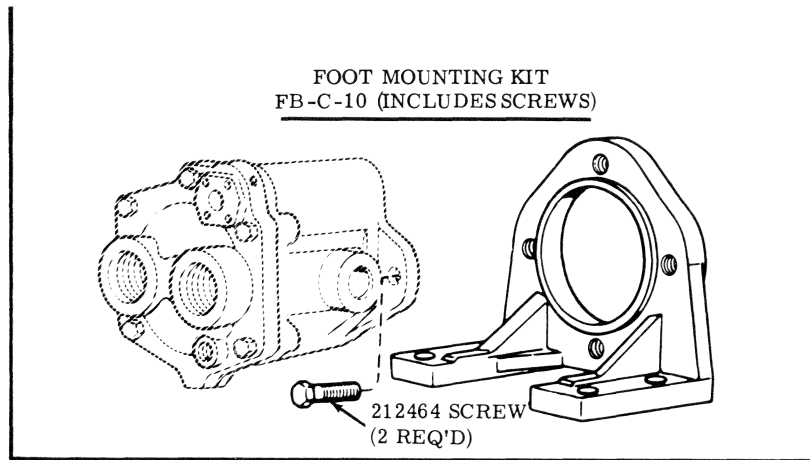
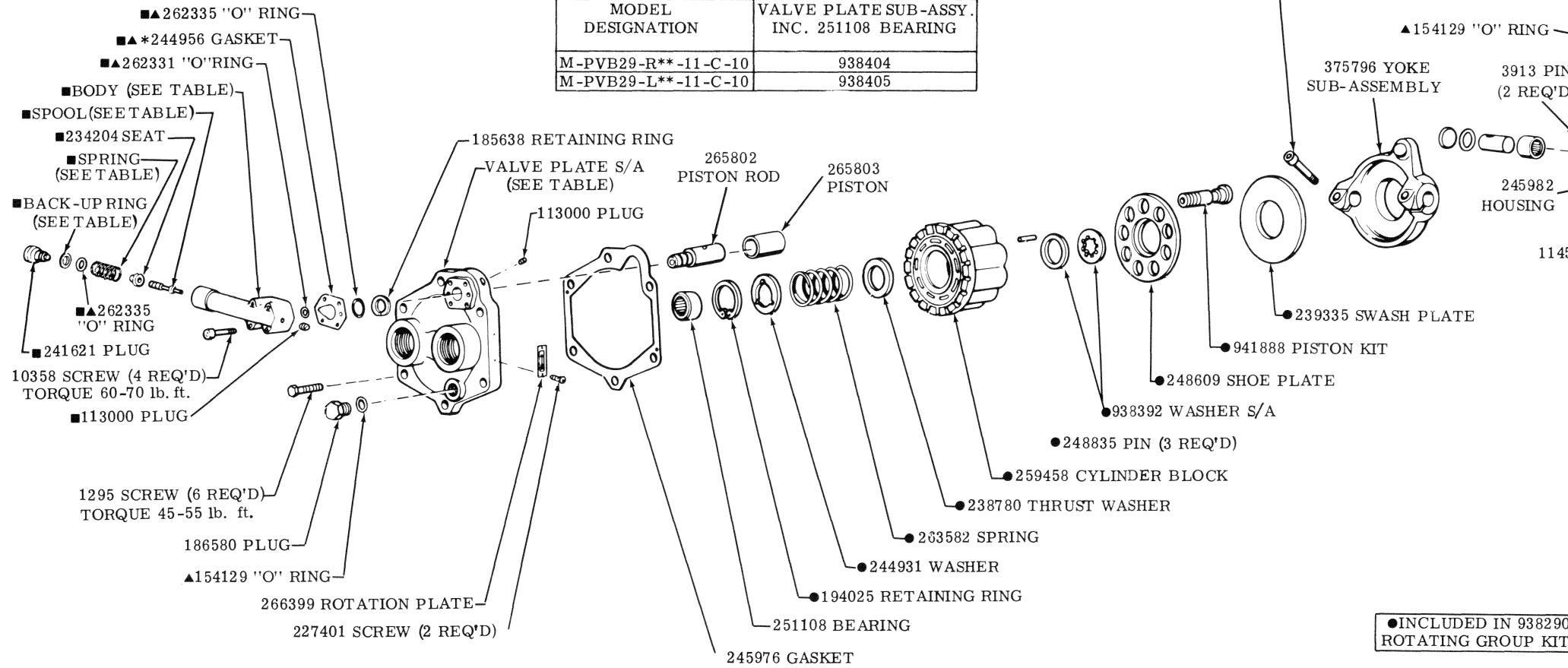
Vickers Incorporated
 A TRINOVA Company
 5445 Corporate Drive
 P.O. Box 302
 Troy, Michigan 48007-0302
 U.S.A.

CONTROL TYPE	BODY	SPOOL	BACK-UP RING	PLUG	WIRE	SEAL	SPRING	COMP. KIT
C	241568	241717		241621				941700
CR		285624					239371	923990
CG	412890	296234	197573	412940	17077	17079		942480
CV		278711					417649	942441

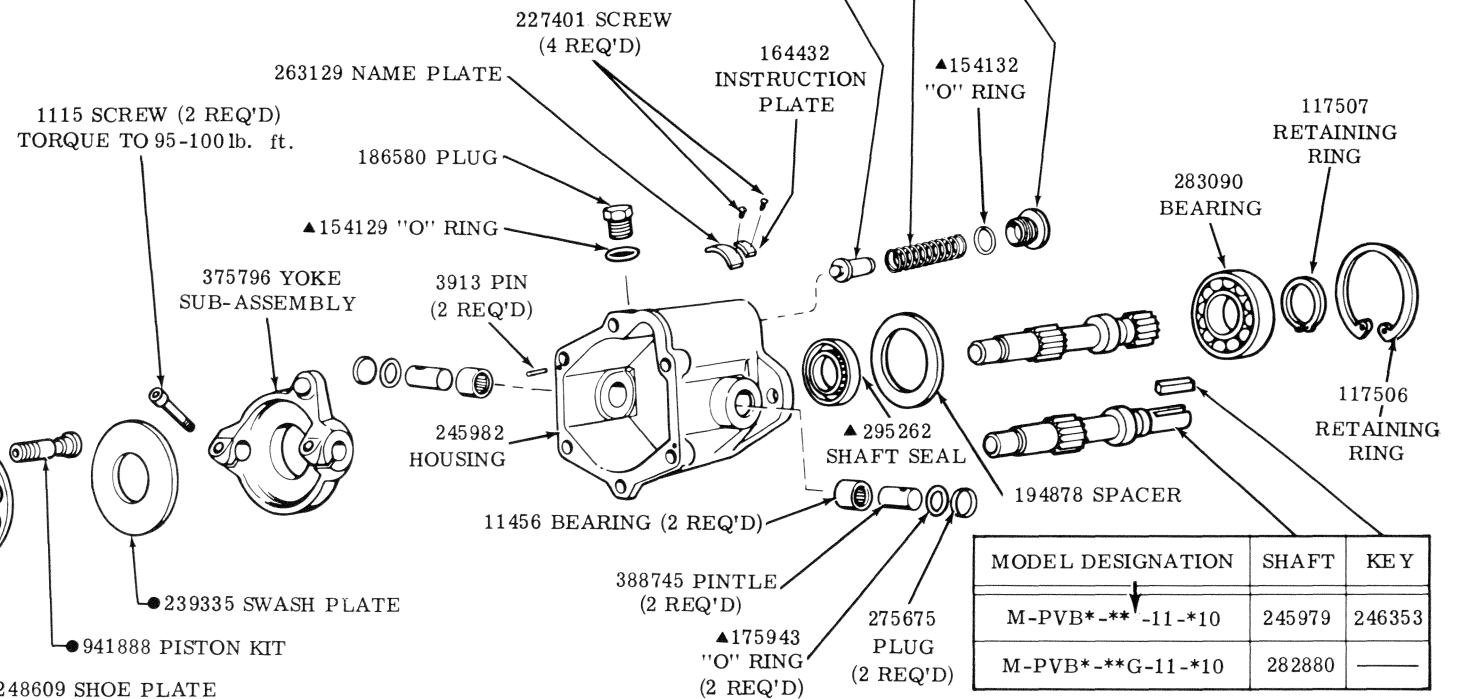
■ INCLUDED IN COMPENSATOR KIT

*** CAUTION**
POSITION GASKET WITH SMALL END OF TEARDROP HOLE POINTING IN DIRECTION OF COMPENSATOR ADJUSTING PLUG.

MODEL DESIGNATION	VALVE PLATE SUB-ASSY. INC. 251108 BEARING
M-PVB29-R**-11-C-10	938404
M-PVB29-L**-11-C-10	938405



SEAT	SPRING	PLUG	MODEL DESCRIPTION
245975	436335	245973	M-PVB29-***-11-C-10
245975	436335	245973	M-PVB29-***-11-CG-10
306370	306434	306369	M-PVB29-***-11-CR-10
245975	436335	245973	M-PVB29-***-11-CV-10



● INCLUDED IN 938290 ROTATING GROUP KIT

▲ = SERVICED IN 923006 SEAL KIT

