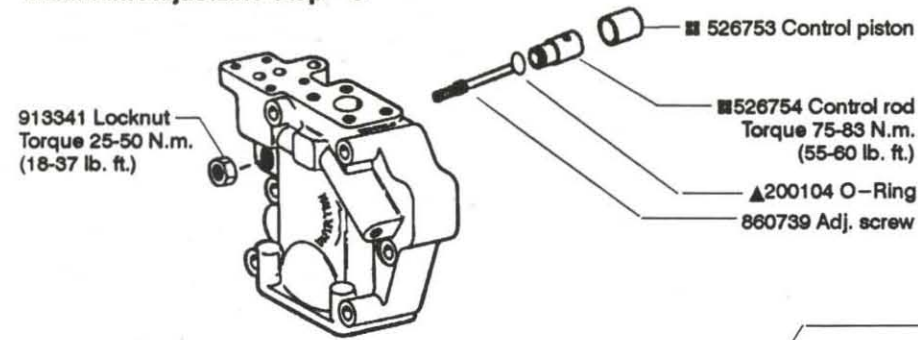
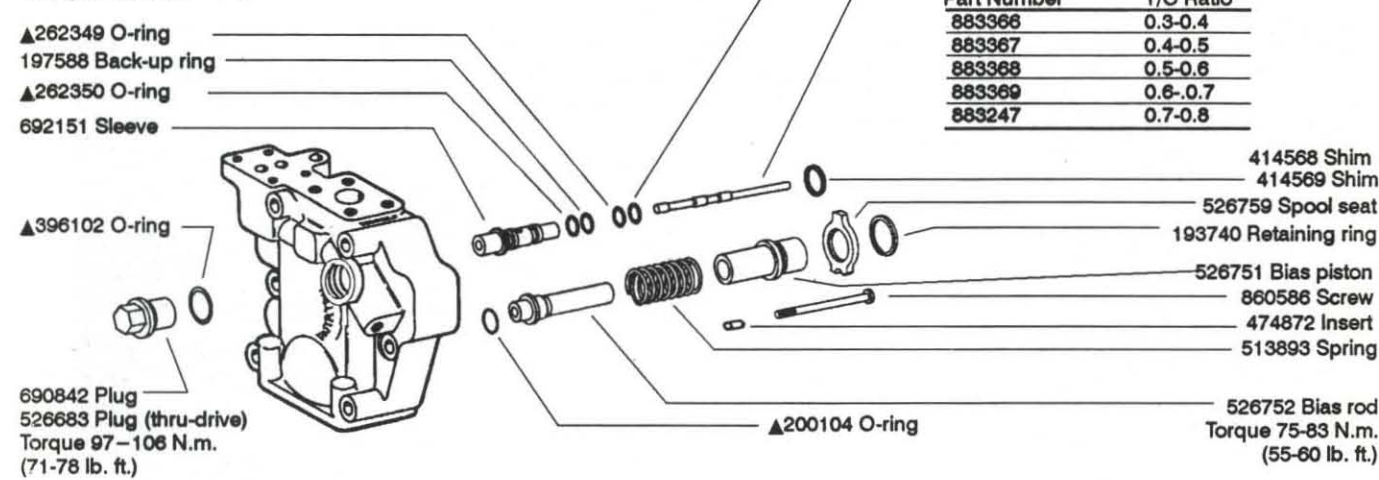


Maximum Adjustable Stop - S



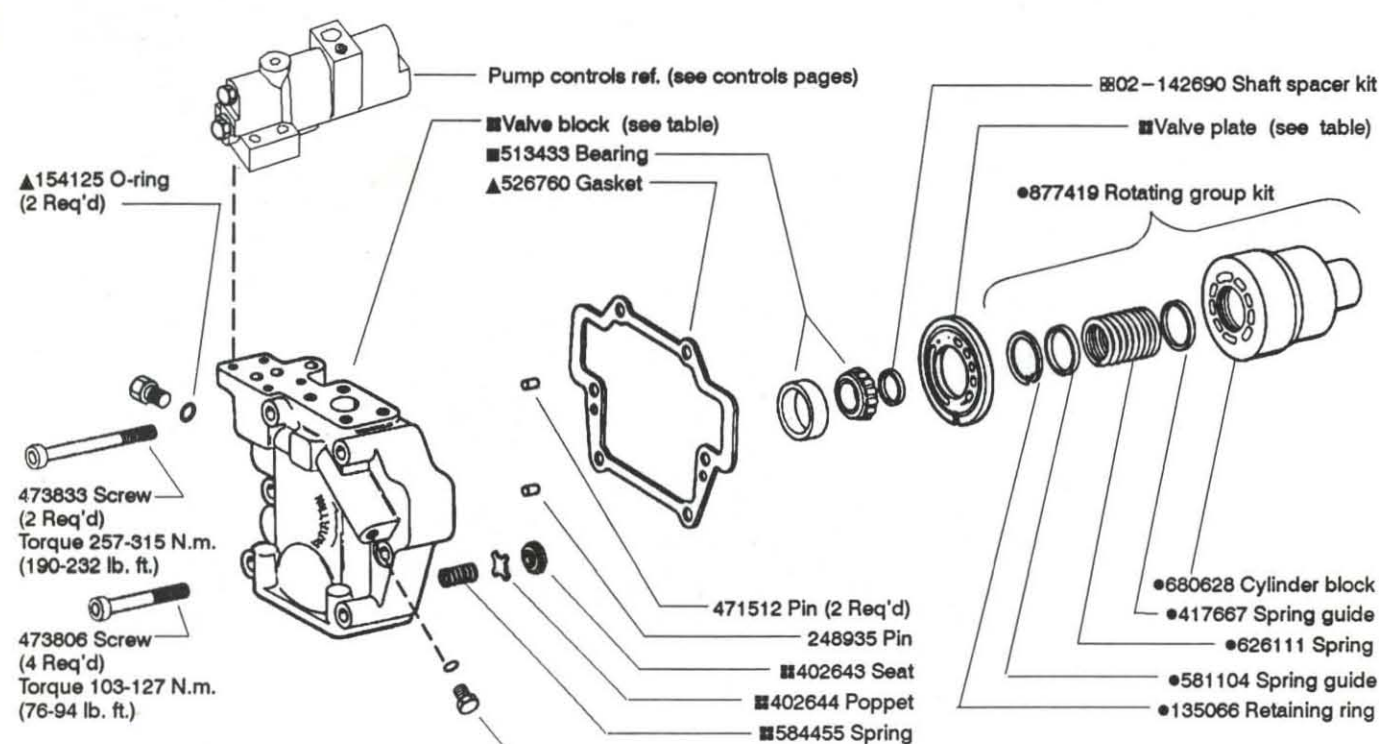
Torque Limiter - CT



197587 Back-up ring
Feedback Spool S/A

Part Number	T/C Ratio*
883366	0.3-0.4
883367	0.4-0.5
883368	0.5-0.6
883369	0.6-0.7
883247	0.7-0.8

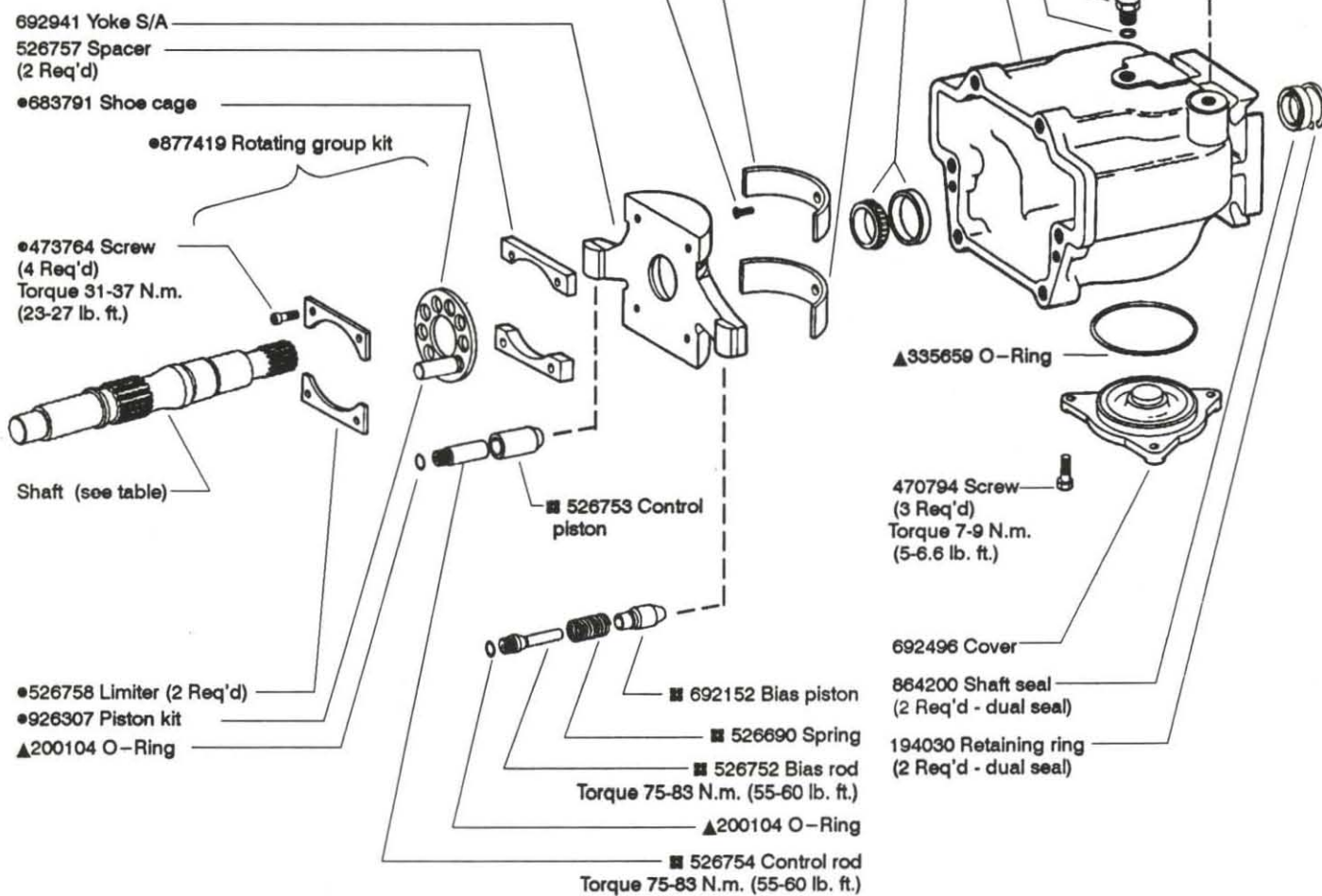
Load Sensing - C/CM/CMV



* To determine the correct feedback spool S/A, divide the torque limiting pressure noted in the model code by the pressure limiting control cracking pressure (i.e. T/C=Ratio). On a dual level pressure limiting control, use the high level pressure in this calculation.

Model designation	Valve Block	Valve Plate
131*-LF-10-C*	876156	527163
131*-LM-10-C*	876157	527163
131*-RF-10-C*	876046	527164
131*-RM-10-C*	514382	527164
131*-LF-10-CT	860529	527163
131*-LM-10-CT	692107	527163
131*-RF-10-CT	860530	527164
131*-RM-10-CT	860531	527164
131*-LSF-10-C	860800	527163
131*-LSM-10-C	860801	527163
131*-RSF-10-C	860792	527164
131*-RSM-10-C	860793	527164
131QIC-LF-10-C*	876156	876045
131QIC-RF-10-C*	876046	864381

Shaft	Type	Key
877042	3 - Splined	
876177	3 - Splined thru	
860593	12 - Splined	
860594	12 - Splined thru	
876175	13 - Str. keyed	140282
876176	16 - Str. keyed thru	633260



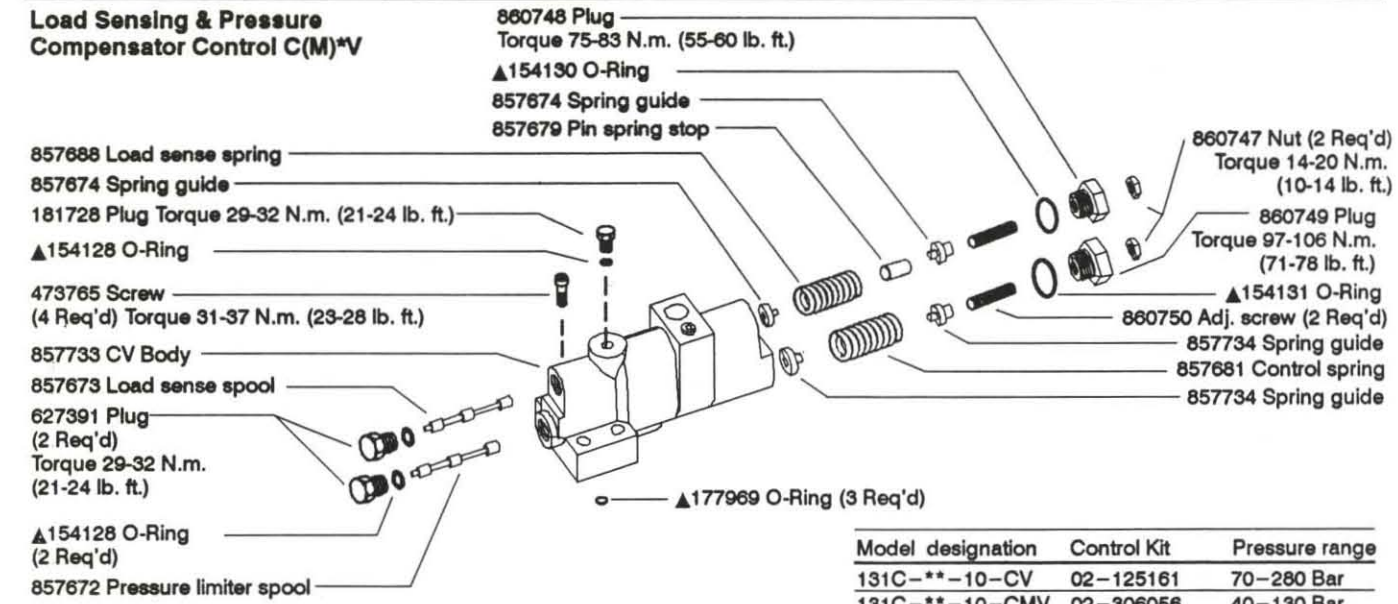
NOTE
For satisfactory service life of these components in industrial applications, use full flow filtration to provide fluid which meets ISO cleanliness code 14/12 or cleaner.

- ▲ Available in single shaft seal kit 02-102265. Equivalent double shaft seal kit 02-102266
- Available in rotating group kit 877419
- Available in bearing kit 877426

NOTE
Right hand rotation shown. View is opposite for left hand rotation. Please refer to Overhaul Manual M-2210-S.

NOTE
Use shims as required to obtain 0.01-0.10 mm (.0004-.004 in.) axial shaft endplay.

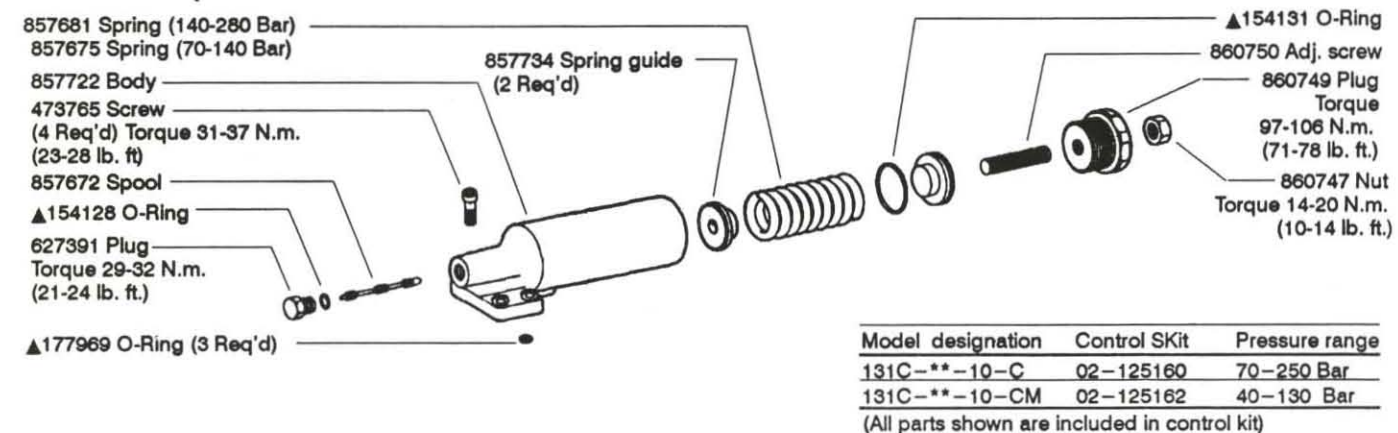
Load Sensing & Pressure Compensator Control C(M)*V



Model designation	Control Kit	Pressure range
131C-**-10-CV	02-125161	70-280 Bar
131C-**-10-CMV	02-306056	40-130 Bar

(All parts shown are included in control kit)

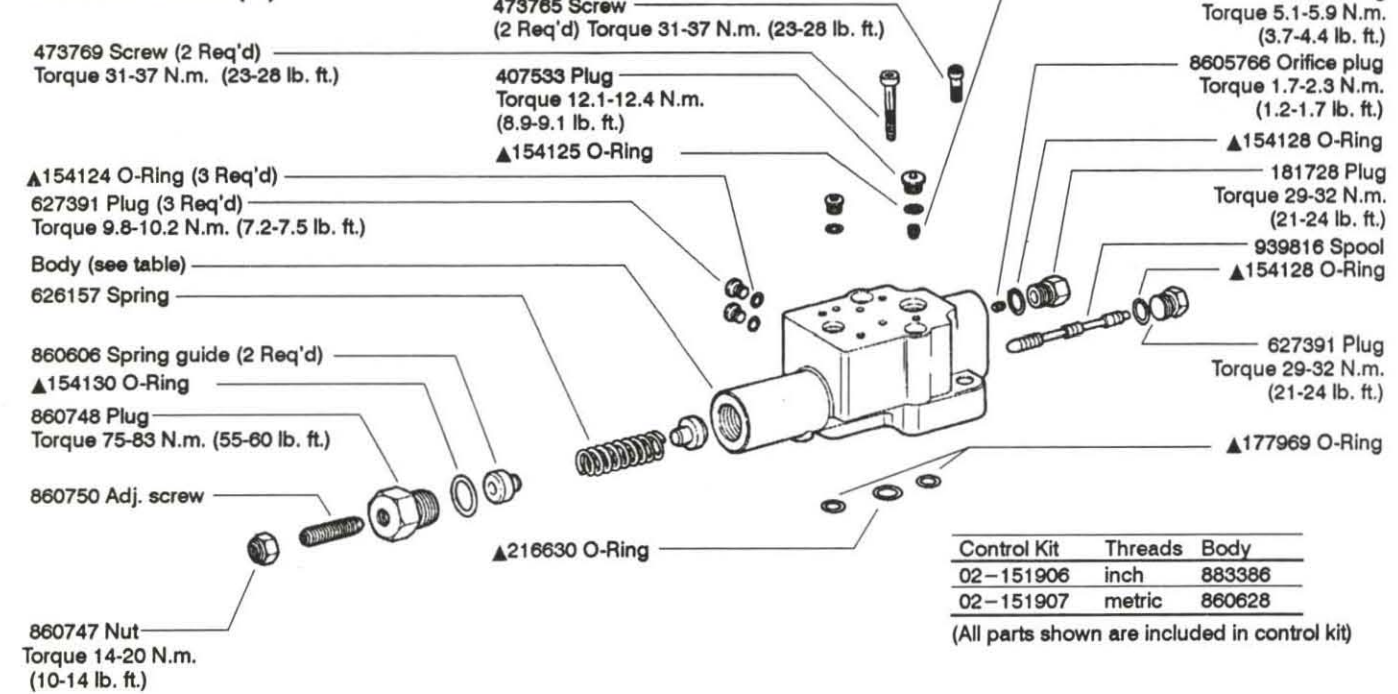
Pressure Compensator Control C & CM



Model designation	Control SKit	Pressure range
131C-**-10-C	02-125160	70-250 Bar
131C-**-10-CM	02-125162	40-130 Bar

(All parts shown are included in control kit)

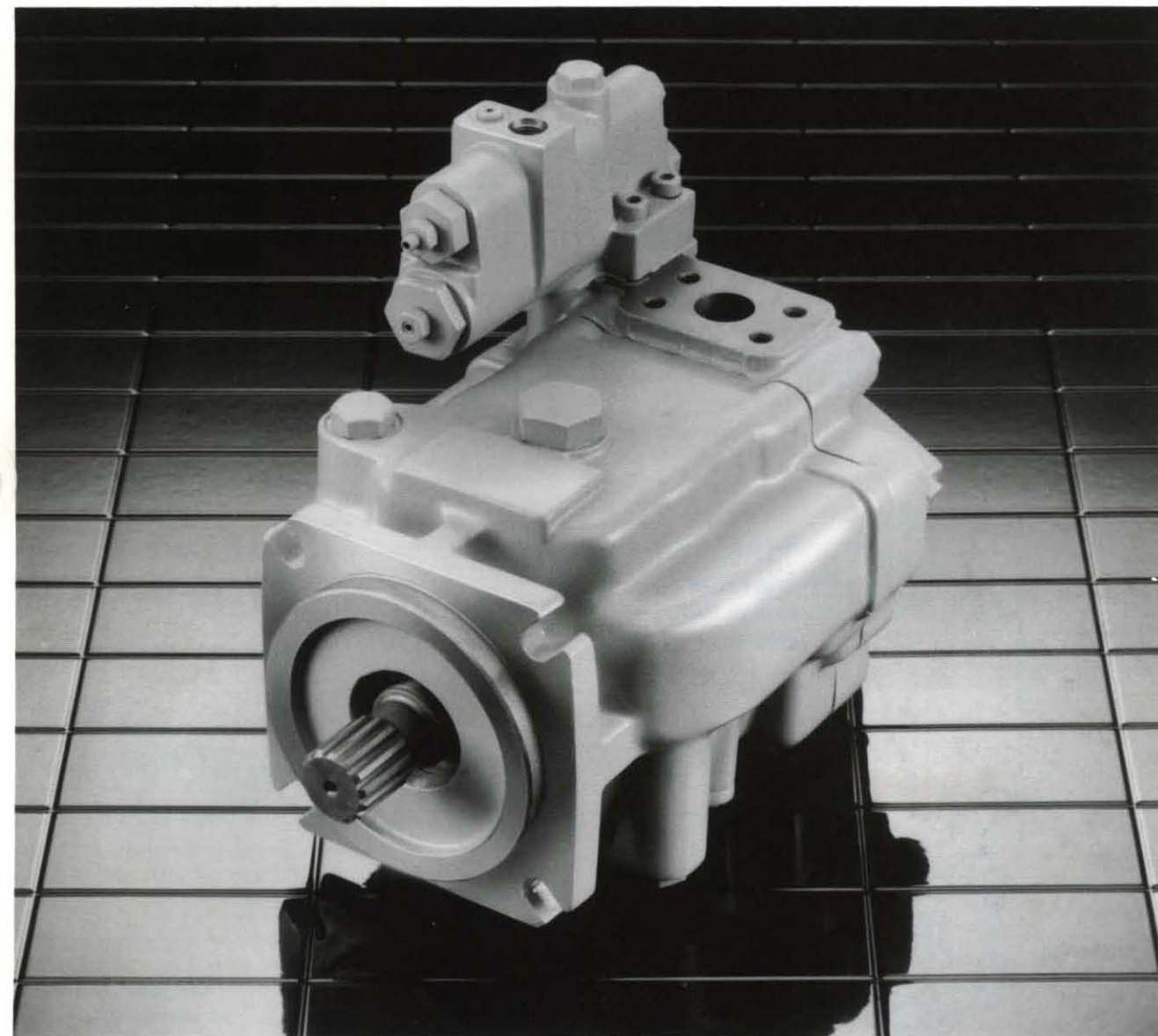
Industrial Control (IC)



Control Kit	Threads	Body
02-151906	inch	883386
02-151907	metric	860628

(All parts shown are included in control kit)

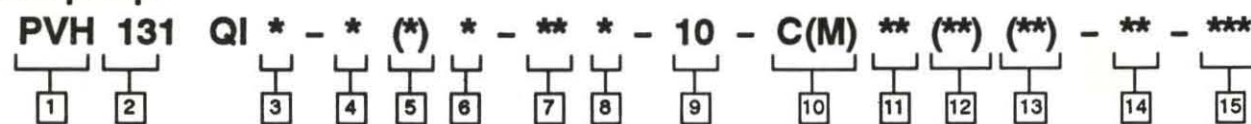
PVH131 Variable Displacement Piston Pump



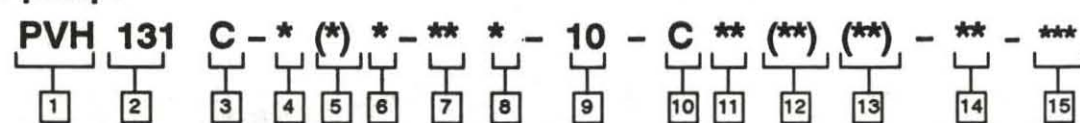
Vickers, Incorporated
A TRINNOVA Company
5445 Corporate Drive
P.O. Box 302
Troy, Michigan 48007-0302

Model Codes

Industrial pumps



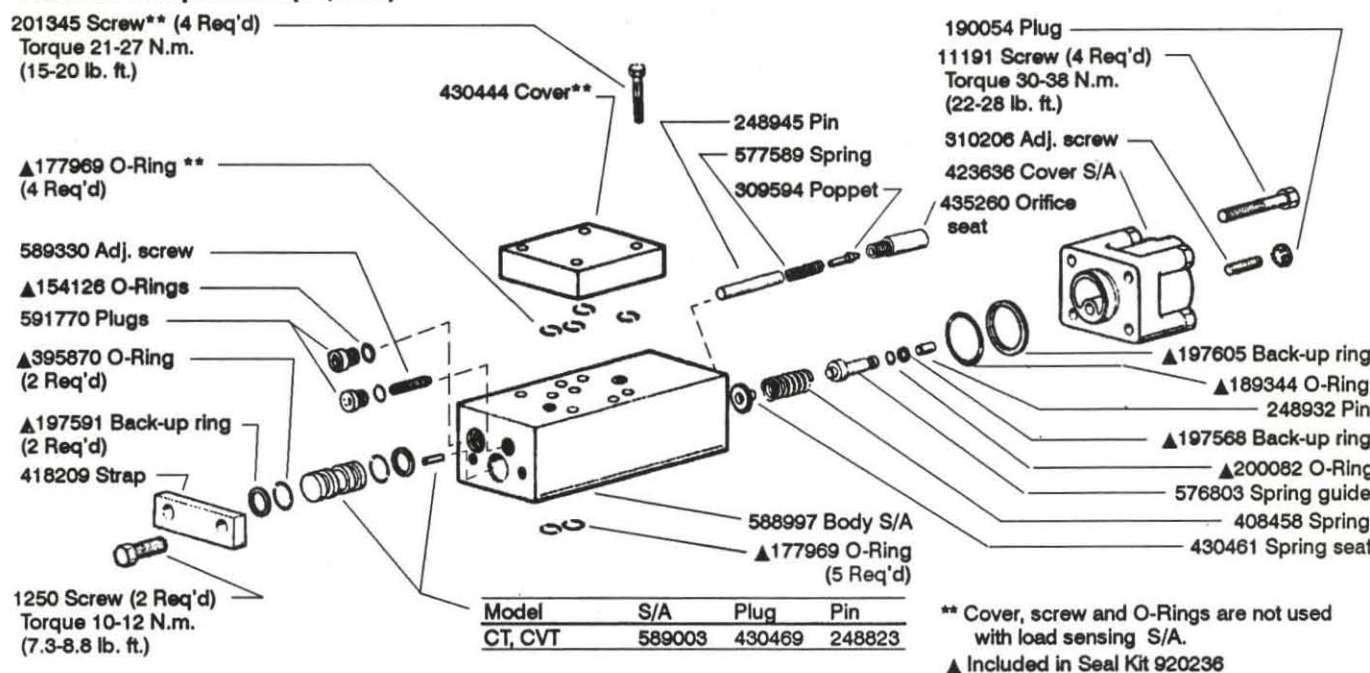
Mobile pumps



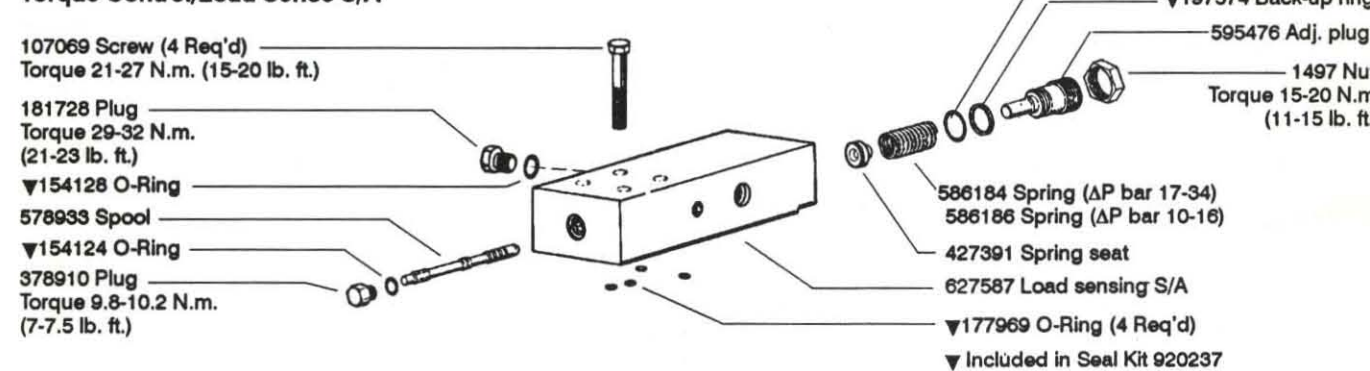
- 1** Piston pump, variable displacement
- 2** Maximum geometric displacement
131 = 131.1 cm³/r (8.0 in³/r)
- 3** Mounting flange, prime mover end
C = SAE "C" 4-bolt type (SAE J744-127-4)
M = ISO 3019/2-125B4HW (Option for PVH57 and PVH74 only)
- 4** Shaft rotation, viewed at prime mover end
R = Right hand, clockwise (Standard on QI models)
L = Left hand, counterclockwise (Optional on QI models)
- 5** Configuration
Blank = Non-thru-drive (single pump)
A = Thru-drive pump with SAE "A" 2-bolt rear flange mounting (SAE J744-82-2)
B = Thru-drive pump with SAE "B" 2- and 4-bolt rear flange mountings† (SAE J744-101-2/4)
C = Thru-drive pump with SAE "C" 2- and 4-bolt rear flange mountings† (SAE J744-127-2/4)
S = Adjustable maximum volume stop (non-thru-drive and non-torque-control pumps only)
- 6** Main ports
F = SAE 4-bolt flange pads (standard)
M = SAE 4-bolt pads with metric mounting bolt threads
- 7** Shaft-end type, at prime mover end
3 = SAE "CC" Splined 17 tooth (J744-38-4) 12/24 D.P.
12 = SAE "D" Splined 13 tooth (J744-44-4) 8/16 D.P.
13 = SAE "C" Straight (J744-38-1) keyed
16 = SAE "D" Straight (J744-44-1) keyed
- 8** Shaft seal, prime mover end
S = Single, one-way (standard)
D = Double, two-way (optional)
- 9** Pump design number
10 (Subject to change. Installation dimensions unaltered for design numbers 10 to 19 inclusive.)
- 10** Pressure compensator adjustment range
C = 70-250 bar (1015-3625 psi) (standard)
CM = 40-130 bar ((580-1885 psi) (optional QI version)
IC = Industrial control, 20 bar (290 psi) differential pressure setting
- 11** Pressure compensator factory setting in tens of bar
25 = Normal factory setting of 250 bar for "C" models.
7 = Normal factory setting of 70 bar for "CM" models.
- 12** Additional control functions
Blank = No additional controls
V = Load sensing, 20 bar (290 psi) differential pressure setting
T = Torque limiter
VT = Load sensing and torque limiter
- 13** Torque limiter factory setting
** = Customer desired torque limiter setting specified in ten bar (145 psi) increments, e.g.:
8 = 80 bar (1160 psi);
18 = 180 bar (2610 psi).
The torque setting range is from 30-80% of the specified compensator setting.
- 14** Control design number
31 = C, CM, or C**V controls.
13 = C**T controls
14 = C**VT controls
10 = IC controls
- 15** Special features suffix
027= Composite 2-bolt/4-bolt mounting conforming to SAE "C"
031= Thru-drive SAE "A" pad cover
041= No case-to-inlet relief (for use with supercharged circuits, 50 psi max.)
057= Shaft-up operation (vertical mount)

† Built from pump with SAE "A" rear pad to which suitable flange adapter is bolted. For best availability and flexibility, order PVH SAE "A" thru-drive pump and SAE "B" or "C" adapter kit separately.

Pressure Compensator (CT, CVT)



Torque Control/Load Sense S/A



Thru-drive

