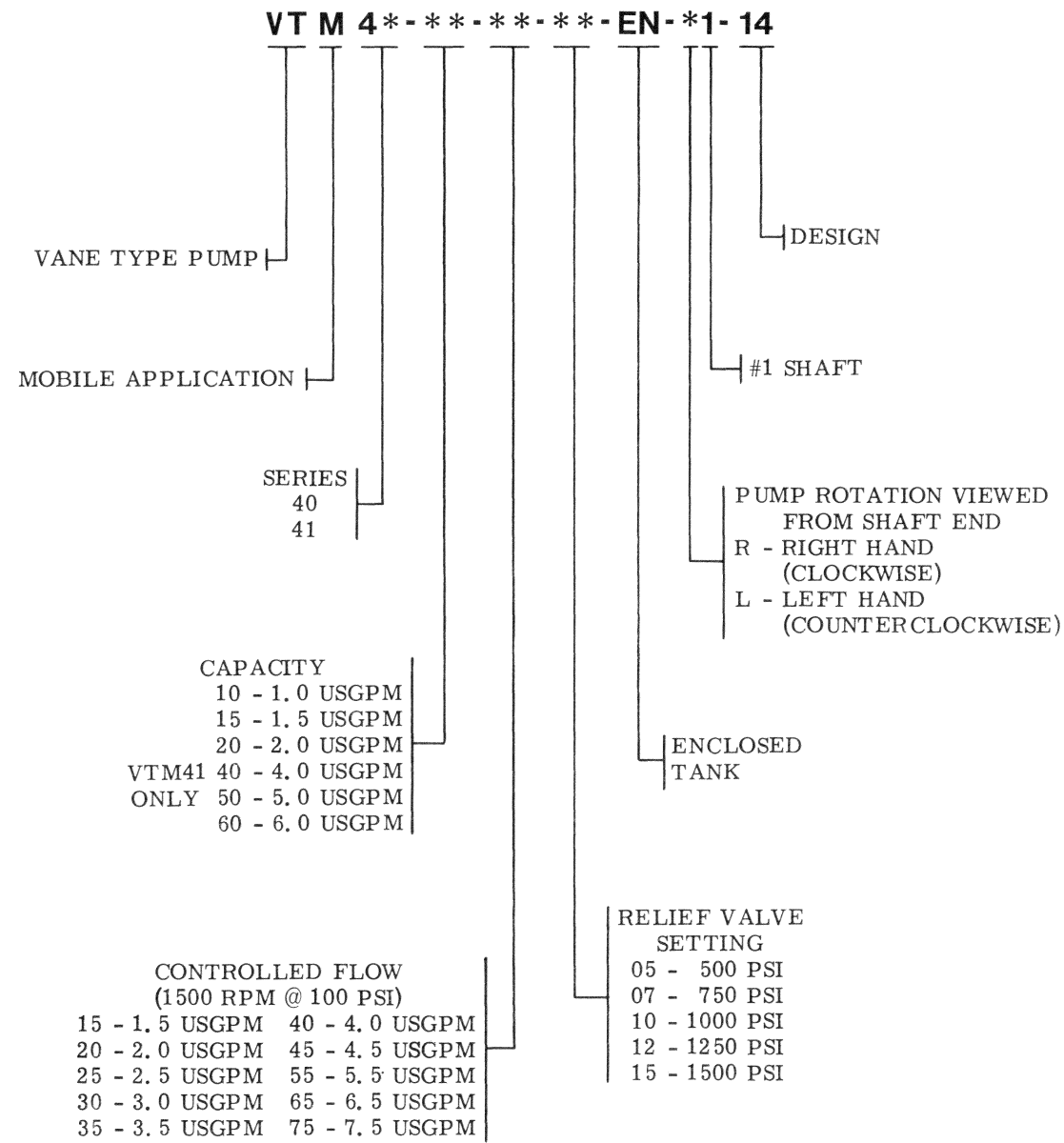


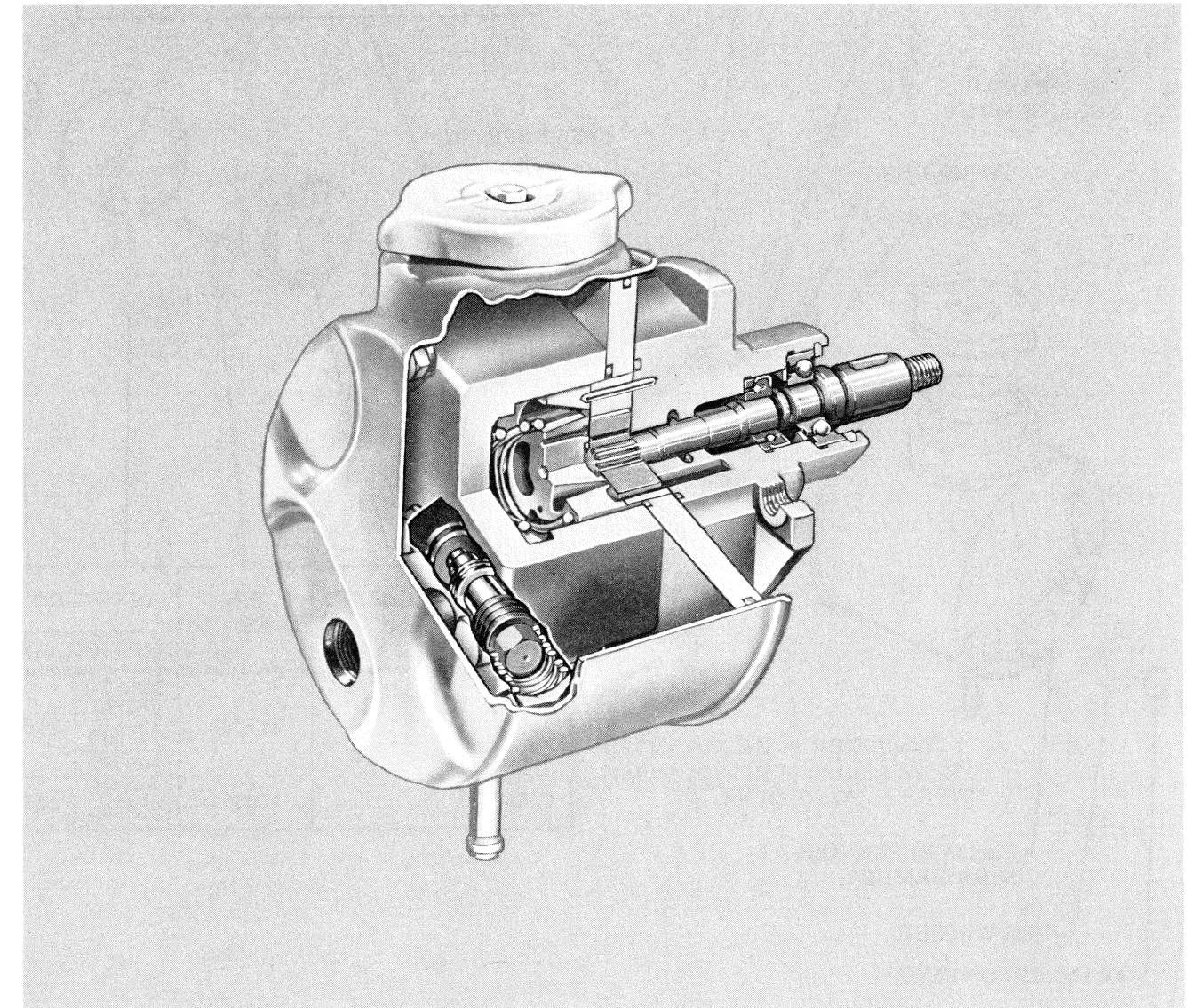


MODEL CODE BREAKDOWN



Power Steering Pumps

VTM40/41 Series -12/-14 Design

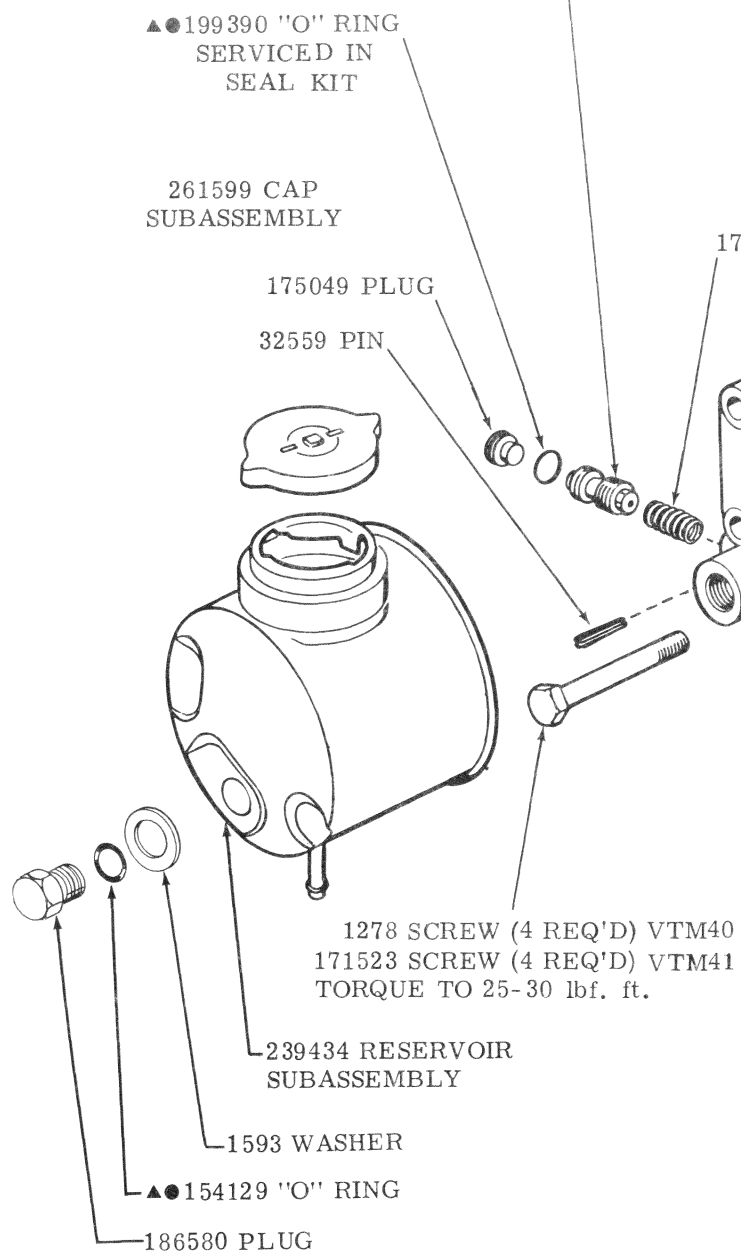


For satisfactory service life of these components, use full flow filtration to provide fluid which meets ISO cleanliness code 18/15 or cleaner. Selections from Vickers OFP, OFR, and OFRS series are recommended.

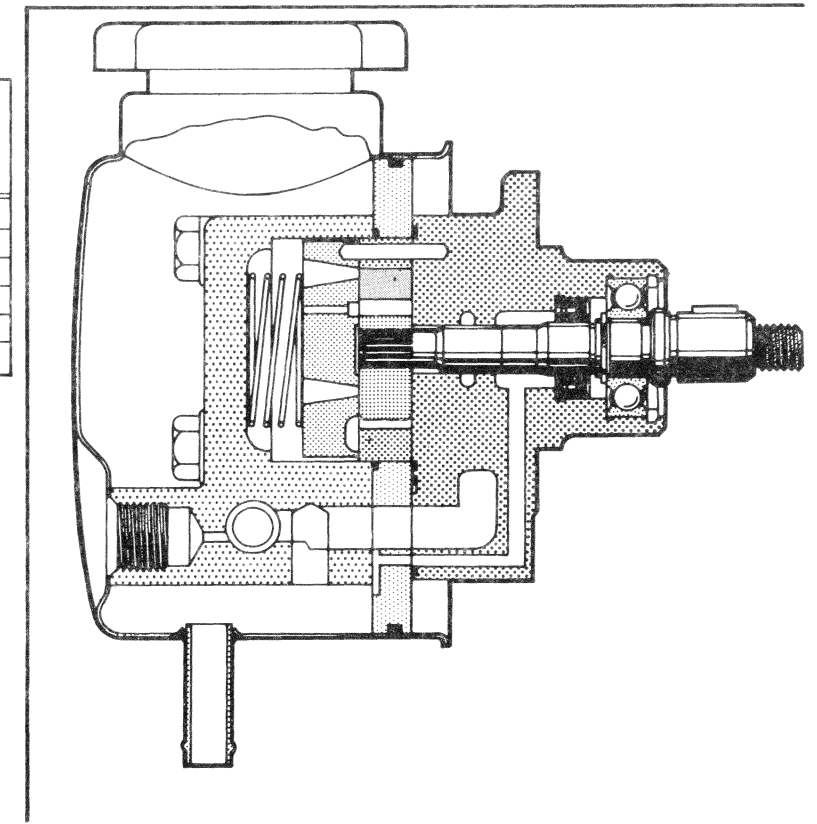
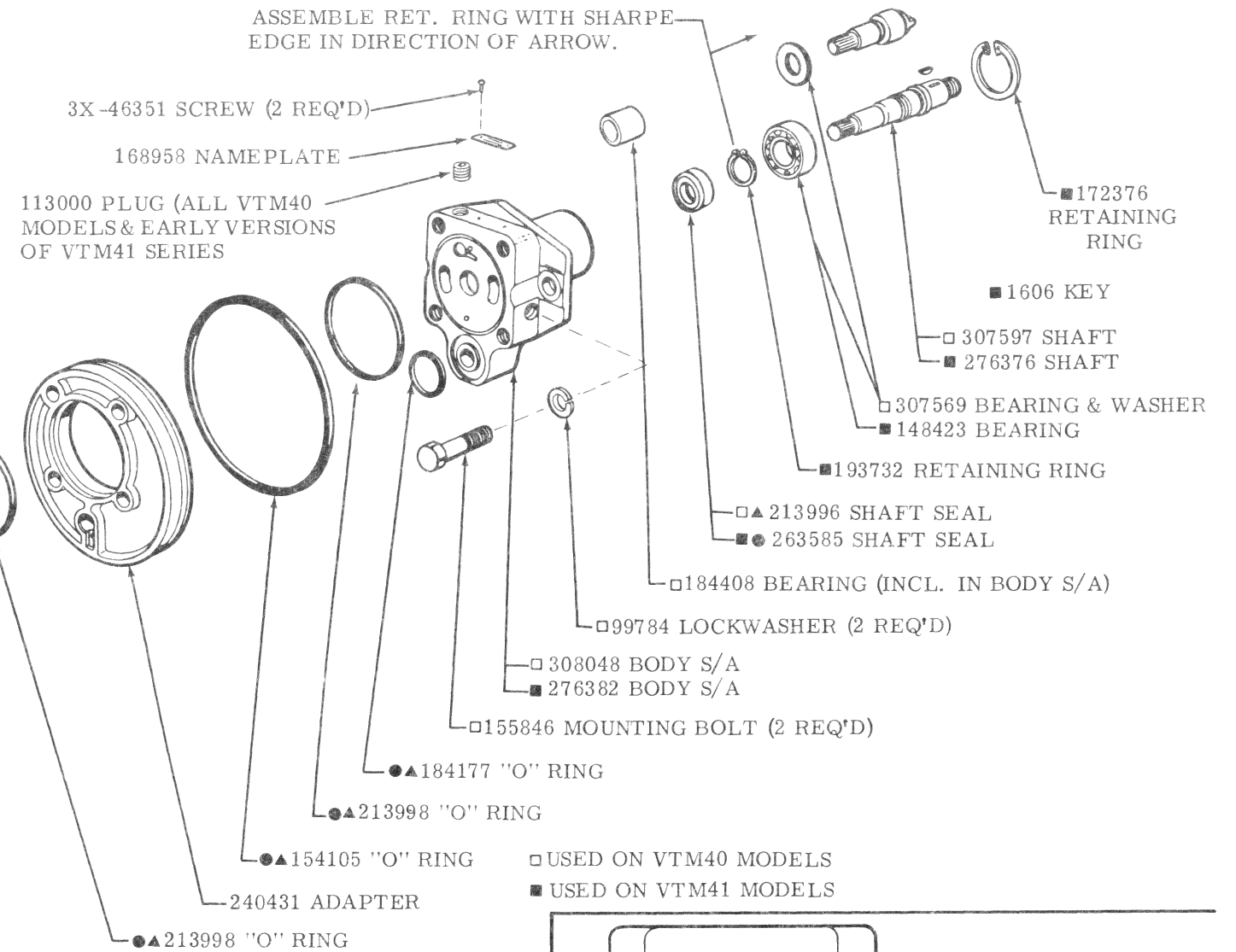
Vickers Incorporated
 A TRINOVA Company
 5445 Corporate Drive
 P. O. Box 302
 Troy, Michigan 48007-0302
 U.S.A.

MODEL DESIGNATION	CONTROL VALVE SUBASSEMBLY
VTM**-**-**-05-**-**-1*	233018
VTM**-**-**-07-**-**-1*	232794
VTM**-**-**-10-**-**-1*	232795
VTM**-**-**-12-**-**-1*	232796
VTM**-**-**-15-**-**-1*	232797

MODEL DESIGNATION	COVER SUBASSY.
VTM**-**-15-**-**-1*	247816
VTM**-**-20-**-**-1*	240677
VTM**-**-25-**-**-1*	247817
VTM**-**-30-**-**-1*	247818
VTM**-**-35-**-**-1*	247819
VTM**-**-40-**-**-1*	247820
VTM**-**-45-**-**-1*	242058
VTM**-**-55-**-**-1*	247821
VTM**-**-65-**-**-1*	247822
VTM**-**-75-**-**-1*	247823



SPRING	PRESSURE PLATE	PIN (2 REQ'D)	RING	ROTOR	VANE KIT (10 VANES)	CARTRIDGE KIT	MODEL DESIGNATION
289281	276396	217308	296594	213860	912139	923087	VTM**-10-**-**-**-1*
			296595			923088	VTM**-15-**-**-**-1*
			296596			923089	VTM**-20-**-**-**-1*
			296597			923090	VTM41-40-**-**-**-1*
245507		154364	296598	213859	922594	923091	VTM41-50-**-**-**-1*
			296599			923092	VTM41-60-**-**-**-1*



▲ INCLUDED IN VTM40 SEAL KIT 922709

● INCLUDED IN VTM41 SEAL KIT 923083