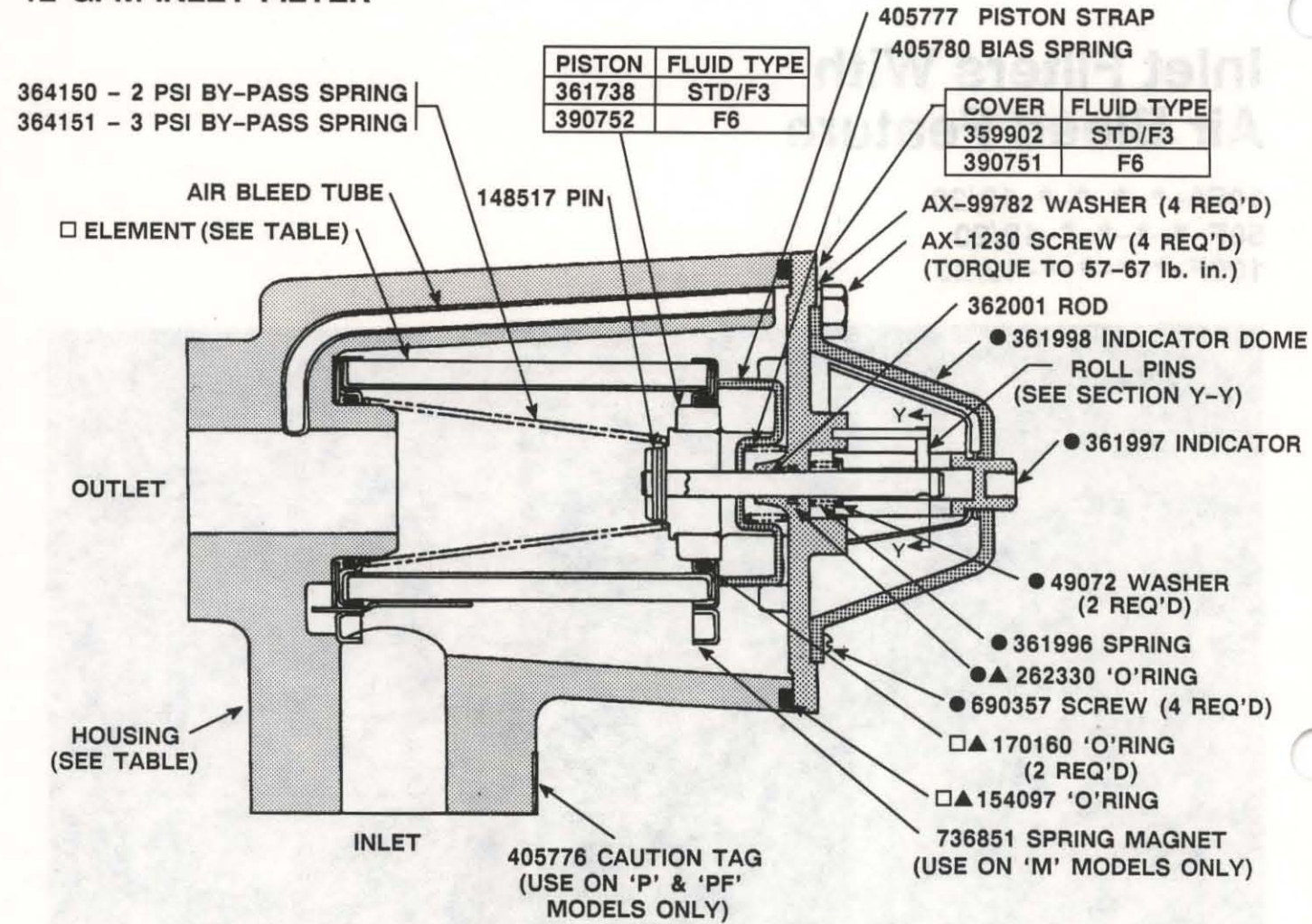


(F*)-10FA-**-**-**-12/20
12 GPM INLET FILTER

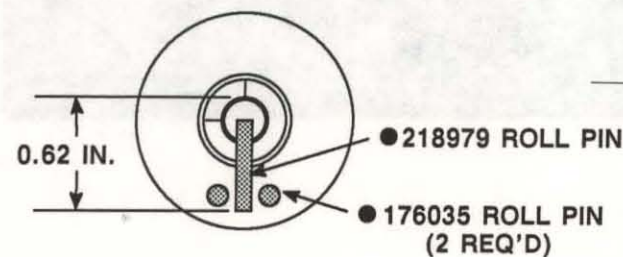


NOTE
INLET PORT MUST FACE DOWNWARD FOR AIR BLEED FEATURE TO FUNCTION PROPERLY.

| □ - INCLUDED IN FILTER ELEMENT KITS | | | |
|-------------------------------------|---------|--------|--------|
| MODEL | ELEMENT | STD. | F3 |
| 10FA-1**-**-12/20 | 361990 | 941052 | 941053 |
| 10FA-2**-**-12/20 | 361739 | 941054 | 941055 |

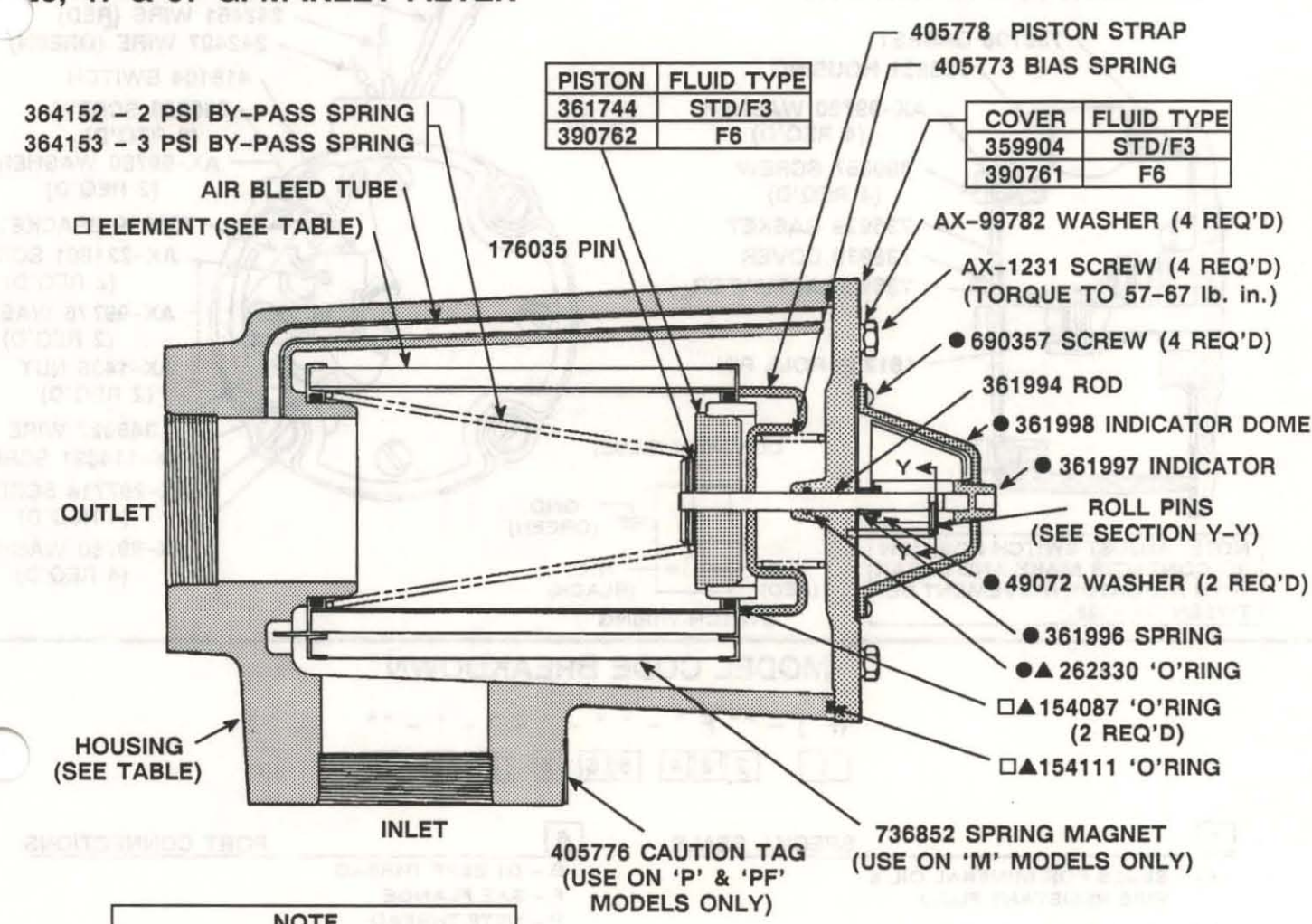
| HOUSING | | PORT SIZE & FLOW RATING |
|-----------------|--------|-------------------------|
| PORT CONNECTION | | 'A' - 1" 12 USGPM |
| B | STD/F3 | 575965 |
| | F6 | 575966 |
| F | STD/F3 | 367126 |
| | F6 | 390750 |
| P | STD/F3 | 359906 |
| | F6 | 390748 |
| S | STD/F3 | 362000 |
| | F6 | 390749 |
| PF | STD/F3 | 573003 |
| | F6 | 573021 |
| SF | STD/F3 | 573004 |
| | F6 | 573022 |

- ▲ - INCLUDED IN 919641 SEAL KIT FOR STD. & F6. F3 EQUIVALENT 919642 SEAL KIT
- - INCLUDED IN MECHANICAL INDICATOR KIT 942477



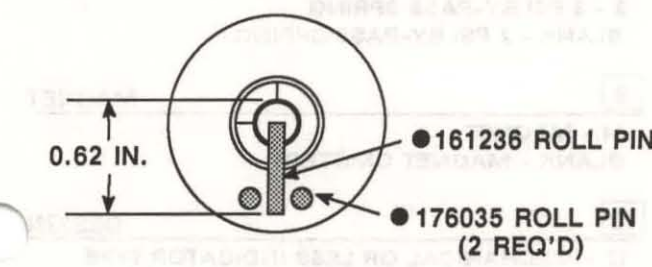
SECTION Y-Y

(F*)-50F*-**-**-12/20
28, 47 & 67 GPM INLET FILTER



NOTE
INLET PORT MUST FACE DOWNWARD FOR AIR BLEED FEATURE TO FUNCTION PROPERLY.

| □ - INCLUDED IN FILTER ELEMENT KITS | | | | |
|-------------------------------------|---------|--------|--------|--|
| MODEL | ELEMENT | STD. | F3 | |
| 50FB-1**-**-12/20 | 361991 | 941056 | 941057 | |
| 50FB-2**-**-12/20 | 361740 | 941058 | 941059 | |
| 50FC/D-1**-**-12/20 | 361992 | 941060 | 941061 | |
| 50FC/D-2**-**-12/20 | 361741 | 941062 | 941063 | |

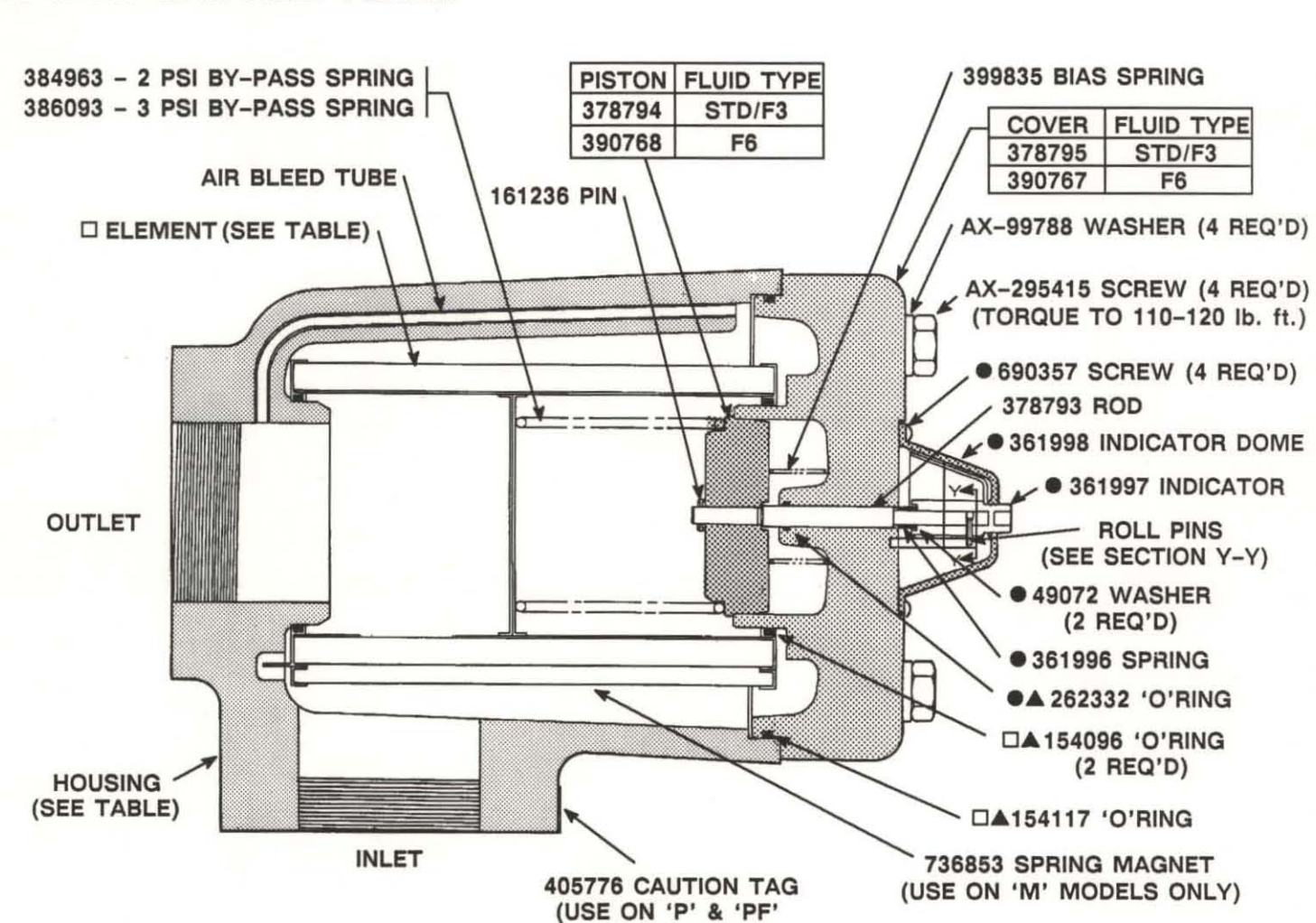


SECTION Y-Y

| HOUSING | | PORT SIZE & FLOW RATING | | |
|-----------------|--------|-------------------------|-------------------|-----------------------|
| PORT CONNECTION | | 'B' - 1-1/2" 28 USGPM | 'C' - 2" 47 USGPM | 'D' - 2-1/2" 67 USGPM |
| | | P | STD/F3 | 361750 |
| S | F6 | 390753 | 390754 | 390755 |
| | STD/F3 | 367128 | 367129 | --- |
| F | F6 | 390756 | 390757 | --- |
| | STD/F3 | 367131 | 367132 | 367138 |
| PF | F6 | 390758 | 390759 | 390760 |
| | STD/F3 | 573006 | 573007 | 573008 |
| SF | F6 | 573023 | 573024 | 573025 |
| | STD/F3 | 573010 | 573011 | --- |
| | F6 | 573026 | 573027 | --- |

- ▲ - INCLUDED IN 919643 SEAL KIT FOR STD. & F6. F3 EQUIVALENT 919644 SEAL KIT
- - INCLUDED IN MECHANICAL INDICATOR KIT 942477

(F*)-100F*-**-**-12/20
97 & 140 GPM INLET FILTER



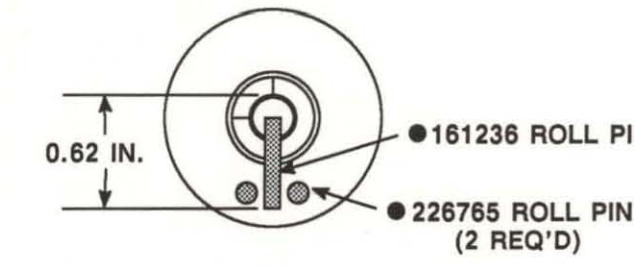
NOTE
INLET PORT MUST FACE DOWNWARD FOR AIR BLEED FEATURE TO FUNCTION PROPERLY.

| □ - INCLUDED IN FILTER ELEMENT KITS | | | |
|-------------------------------------|---------|--------|--------|
| MODEL | ELEMENT | STD. | F3 |
| 100FE/F- 1**-**-12/20 | 378991 | 941064 | 941065 |
| 100FE/F- 2**-**-12/20 | 378990 | 941066 | 941067 |

| HOUSING | | PORT SIZE & FLOW RATING | |
|-----------------|--------|-------------------------|------------------------|
| PORT CONNECTION | | 'E' - 3" 97 USGPM | 'F' - 3-1/2" 140 USGPM |
| | | P | STD/F3 |
| F | F6 | 390763 | 390764 |
| | STD/F3 | 378995 | 378996 |
| PF | F6 | 390765 | 390766 |
| | STD/F3 | 573013 | 573014 |
| | F6 | 573028 | 573029 |

- ▲ - INCLUDED IN 919740 SEAL KIT FOR STD. & F6. F3 EQUIVALENT 919741 SEAL KIT

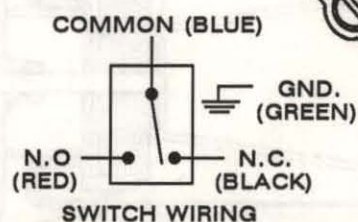
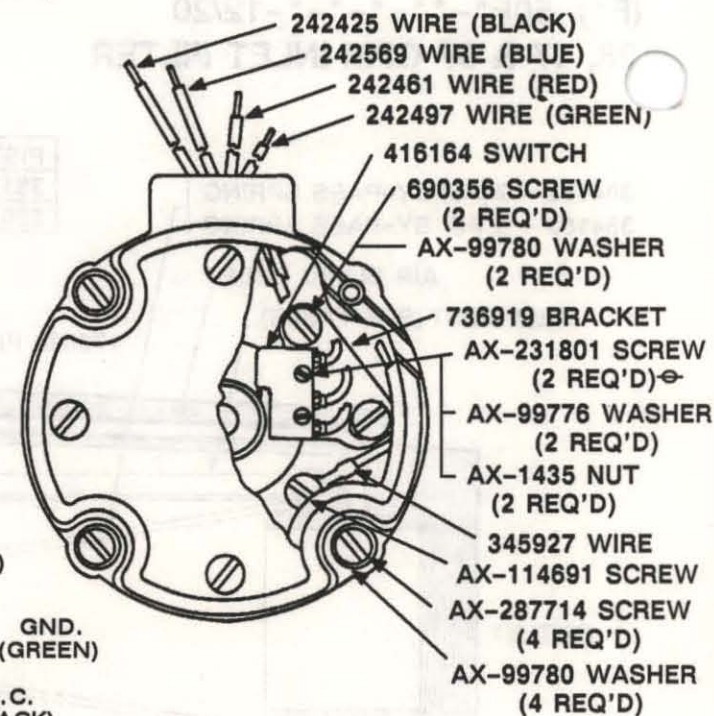
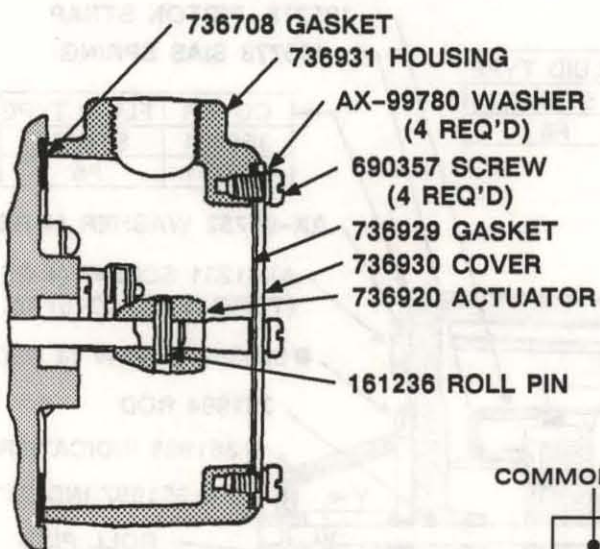
- - INCLUDED IN MECHANICAL INDICATOR KIT 942477



SECTION Y-Y

ELECTRICAL INDICATOR PARTS (ALL MODELS)
(KIT 926587)

⊕ - 100F* MODELS REQUIRE (2) AX-231084 SCREWS AND (1) 351318 INSULATOR.



NOTE: ADJUST SWITCH POSITION SO CONTACTS MAKE AND BREAK WITH ACTUATOR MOVEMENT BETWEEN .25 - .38.

MODEL CODE BREAKDOWN

(F*) - ** F * - * - * - * - * - * - *
1 2 3 4 5 6 7 8 9 10

1 SPECIAL SEALS

F3 - SEALS FOR MINERAL OIL & FIRE RESISTANT FLUID
F6 - SEALS FOR OIL-IN WATER EMULSION FLUID
(OMIT FOR STD. PETROLEUM BASED FLUID)

2 FILTER PACKAGE SIZE

10, 50, 100

3 INLET FILTER WITH AIR BLEED

4 PORT SIZE & FLOW RATING

A - 1 INCH (12 GPM)
B - 1 1/2 INCH (28 GPM)
C - 2 INCH (47 GPM)
D - 2 1/2 INCH (67 GPM)
E - 3 INCH (97 GPM)
F - 3 1/2 INCH (140 GPM)

5 FILTER ELEMENT MICRON RATING

1 - 100 MESH (149 MICRON)
2 - 200 MESH (74 MICRON)

6 PORT CONNECTIONS

B - G1 BSPF THREAD
F - SAE FLANGE
P - NPTF THREAD
S - SAE STRAIGHT THREAD
PF - NPTF THD. (INLET PORT)
SAE FLANGE (OUTLET PORT)
SF - SAE STRAIGHT THD. (INLET PORT)
SAE FLANGE (OUTLET PORT)

7 INDICATOR TYPE

E - ELECTRICAL
L - LESS INDICATOR
BLANK - MECHANICAL

8 BY-PASS SPRING

3 - 3 PSI BY-PASS SPRING
BLANK - 2 PSI BY-PASS SPRING

9 MAGNET

M - MAGNET
BLANK - MAGNET OMITTED

10 DESIGN

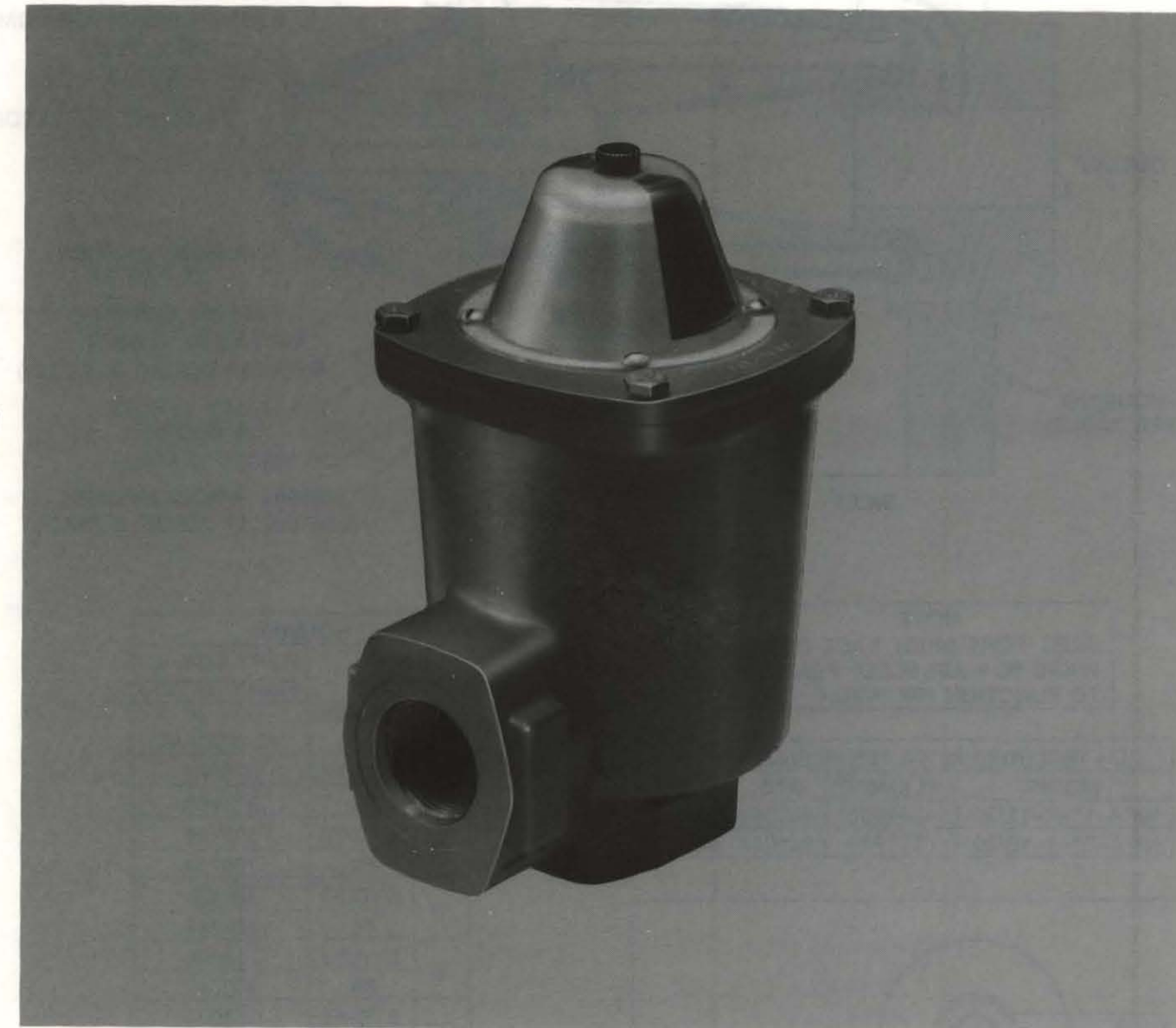
12 - MECHANICAL OR LESS INDICATOR TYPE
20 - ELECTRICAL INDICATOR TYPE

Service Data



Inlet Filters With Air Bleed Feature

10FA-*-*-*-12/20
50F-*-*-*-12/20
100F-*-*-*-12/20



Vickers Incorporated
A TRINOVA Company
5445 Corporate Drive
P. O. Box 302
Troy, Michigan 48007-0302
U.S.A.

Litho In U.S.A.