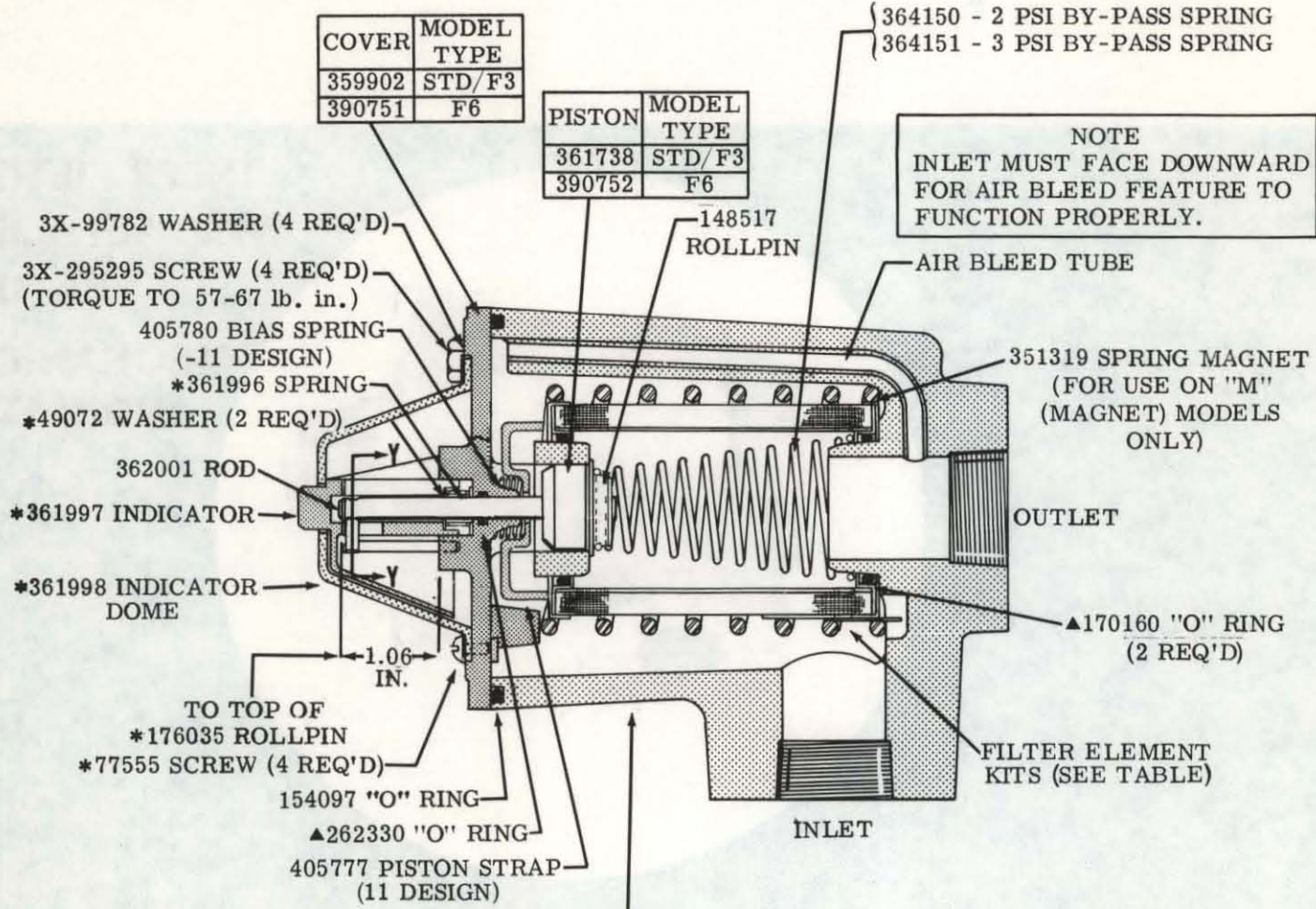
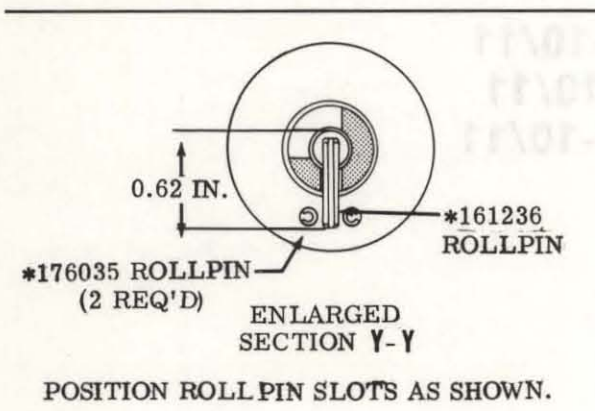


**(F\*)-10FA-\*\*-\*\*\*-10/11**  
**12 GPM INLET FILTER**

\*INCLUDED IN MECHANICAL INDICATOR KIT 942477



HOUSING TYPE	"P" 1 INCH NPTF THD.	"S" - 1 INCH OD TUBE SAE STR. THD.	"F" - 1 INCH PIPE, SAE FLANGE	"PF" INLET - Same as "P" OUTLET - Same as "F"	"SF" INLET - Same as "S" OUTLET - Same as "F"	"B" - G1 (BSPF) THREAD
STD/F3	359906	362000	367126	573003	573004	575965
F6	390748	390749	390750	573021	573022	575966



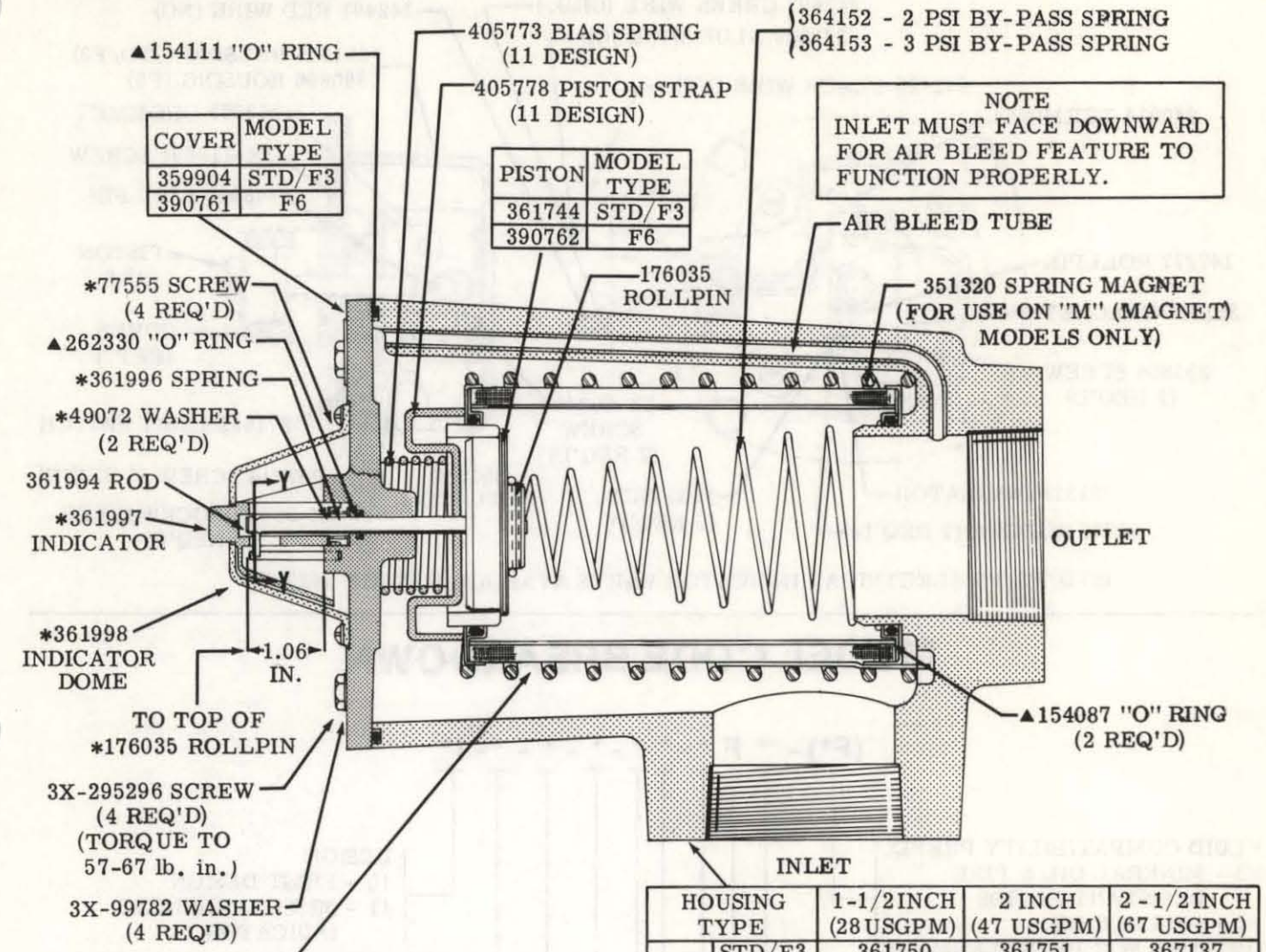
STD/F3 FILTER ELEMENT KITS			
MODEL	ELEMENT	STD.	F3
10FA-1*-10/11	361990	941052	941053
10FA-2*-10/11	361739	941054	941055

▲ INCLUDED IN 919641 SEAL KIT FOR STD & F6.

F3 EQUIVALENT 919642 SEAL KIT

**(F\*)-50F-\*\*-\*\*\*-10/11**  
**28,47,&67 GPM INLET FILTER**

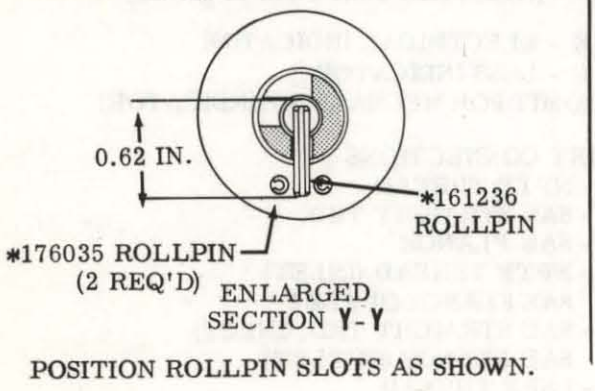
\*INCLUDED IN MECHANICAL INDICATOR KIT 942477



STD/F3 FILTER ELEMENT KITS			
MODEL	ELEMENT	STD.	F3
50FB-1*-10/11	361991	941056	941057
50FB-2*-10/11	361740	941058	941059
50FC/D-1*-10/11	361992	941060	941061
50FC/D-2*-10/11	361741	941062	941063

HOUSING TYPE	1-1/2 INCH (28 USGPM)			2 INCH (47 USGPM)		2-1/2 INCH (67 USGPM)	
	STD/F3	F6		STD/F3	F6	STD/F3	F6
"P"	361750	390753		361751	390754	367137	390755
"S"	367128	390756		367129	390757		
"F"	367131	390758		367132	390759	367138	390760
"PF"	573006	573023		573007	573024	573008	573025
"SF"	573010	573026		573011	573027		

NOTE - HOUSING TYPES "S" AND "F" CONFORM TO SAE STANDARDS

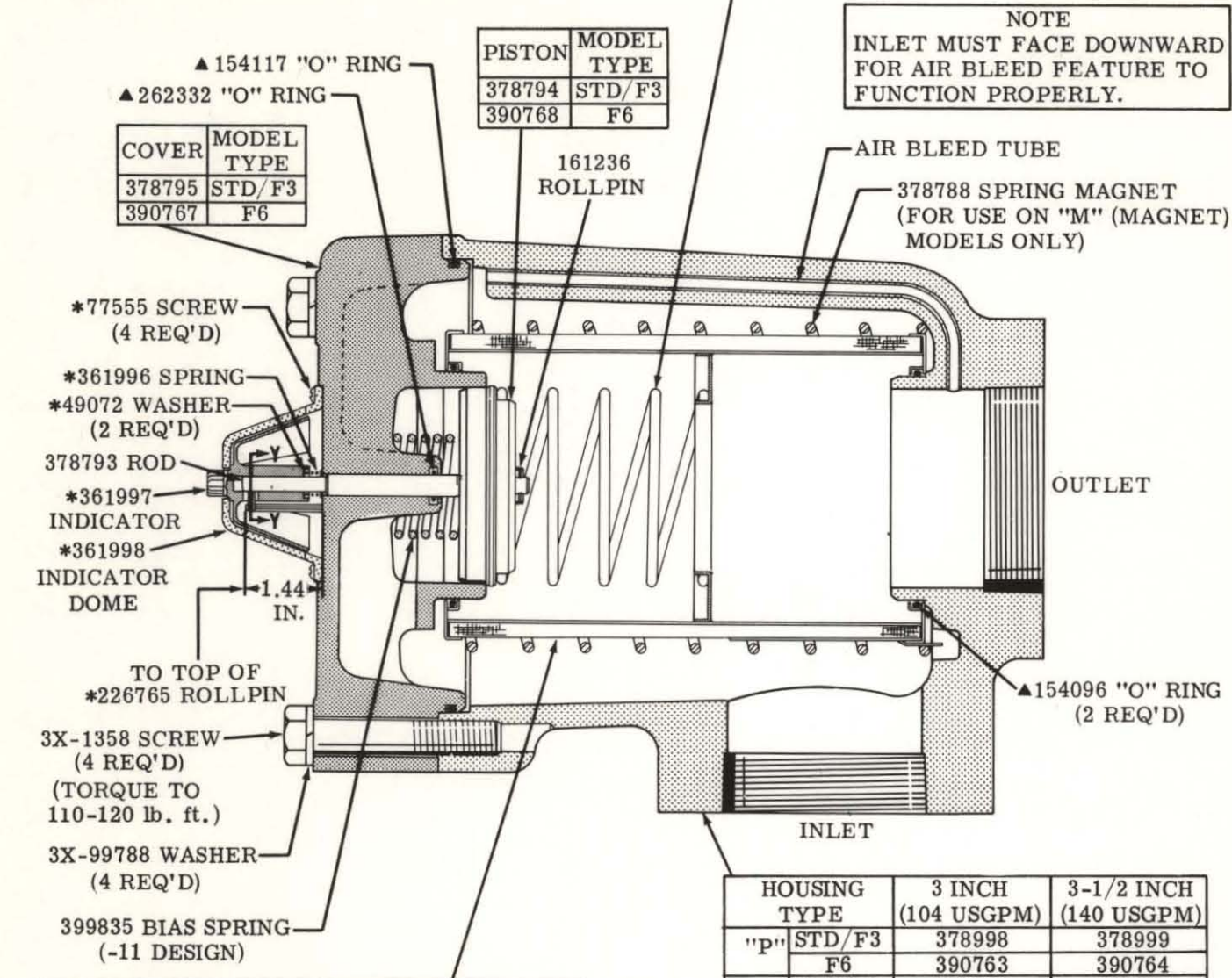


▲ INCLUDED IN 919643 SEAL KIT FOR STD & F6.

F3 EQUIVALENT 919644 SEAL KIT

**(F\*)-100F-\*\*-\*\*\*-10/11**  
**104 & 140 GPM INLET FILTERS**

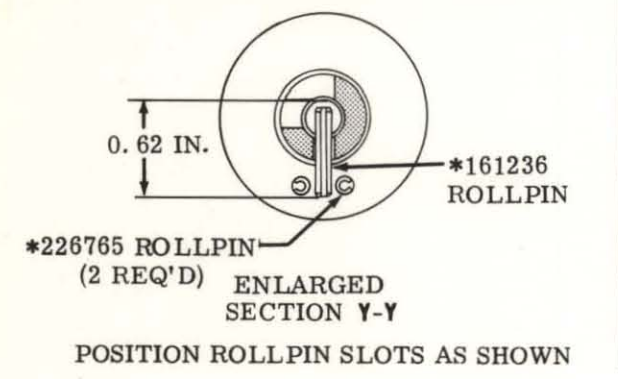
{384963 - 2 PSI BY-PASS SPRING  
 {386093 - 3 PSI BY-PASS SPRING



STD/F3 FILTER ELEMENT KITS			
MODEL	ELEMENT	STD.	F3
100FE/F-1*-10/11	378991	941064	941065
100FE/F-2*-10/11	378990	941066	941067

HOUSING TYPE	3 INCH (104 USGPM)		3-1/2 INCH (140 USGPM)	
	STD/F3	F6	STD/F3	F6
"P"	378998	390763	378999	390764
"F"	378995	390765	378996	390766
"PF"	573013	573028	573014	573029

NOTE - HOUSING TYPE "F" CONFORMS TO SAE STANDARDS

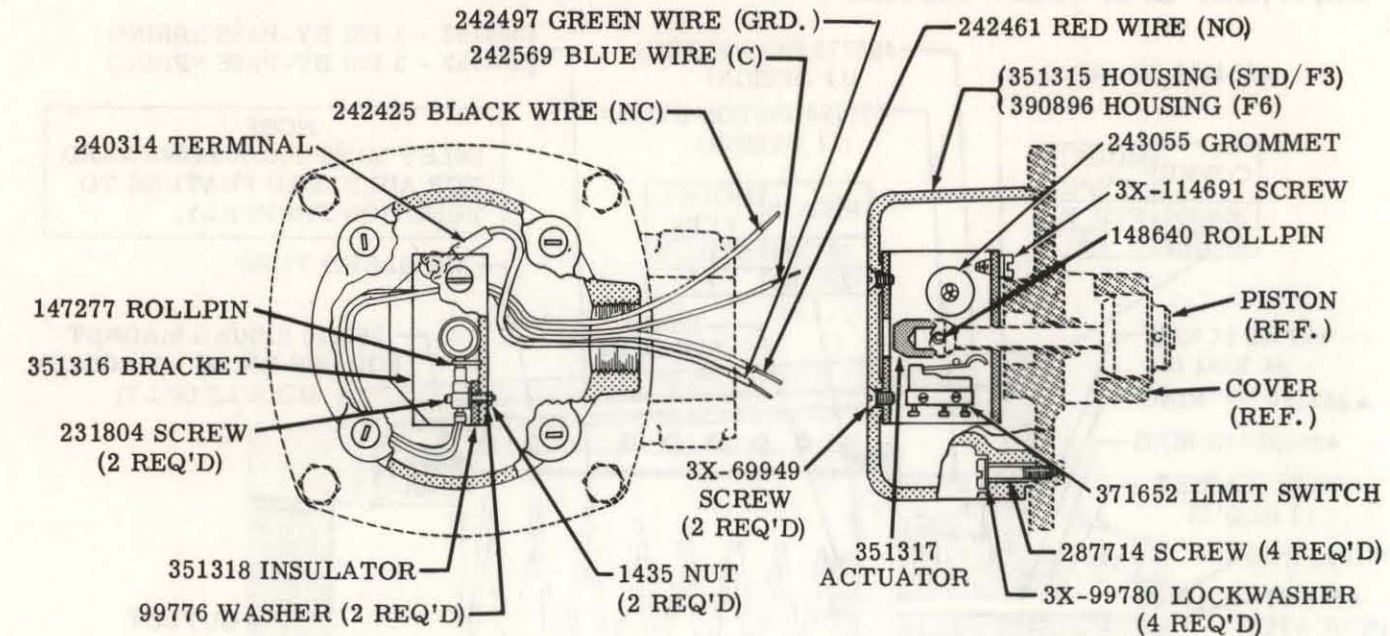


\*INCLUDED IN MECHANICAL INDICATOR KIT 942477

▲ INCLUDED IN 919740 SEAL KIT FOR STD & F6.

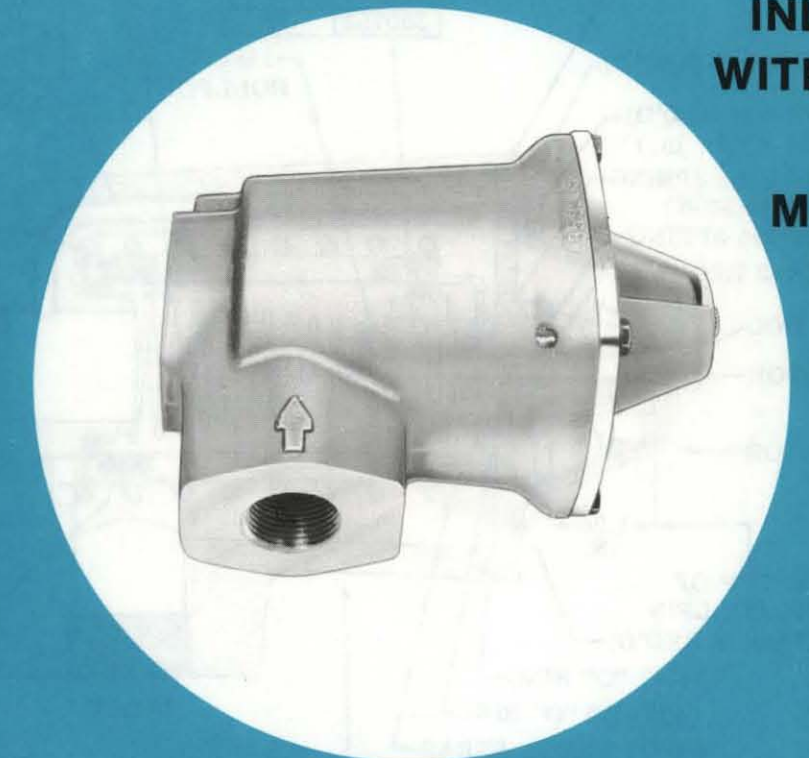
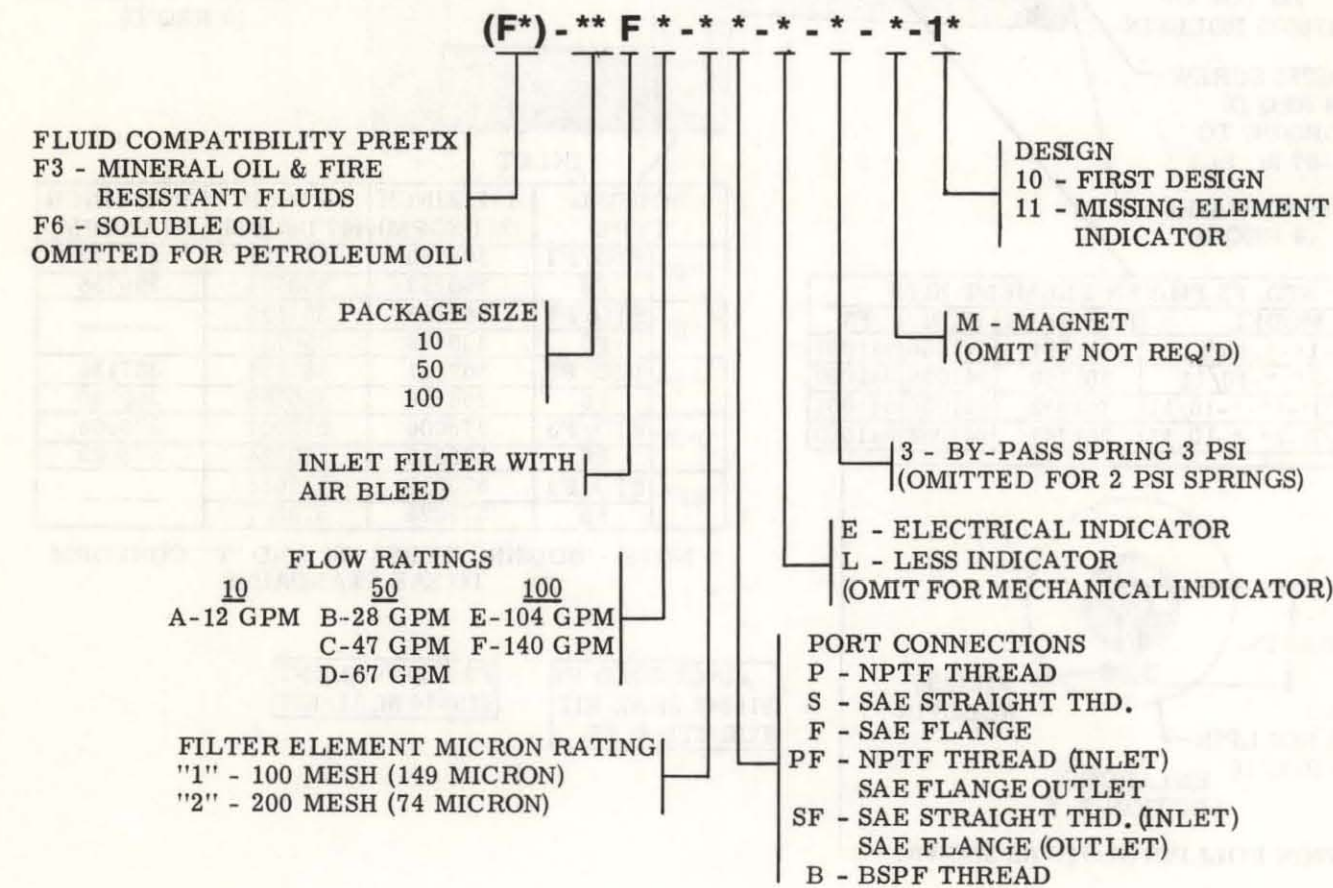
F3 EQUIVALENT 919741 SEAL KIT

**ELECTRICAL INDICATOR COMPONENTS (ALL MODELS)**



(STD/F3/F6 ELECTRICAL INDICATOR PARTS AVAILABLE IN KIT 942399)

**MODEL CODE BREAKDOWN**



**INLET FILTERS WITH AIR BLEED FEATURE  
MECHANICAL INDICATOR**

**SERVICE PARTS INFORMATION**

- (F\*)-10FA-\*\*-\*\*\*-10/11
- (F\*)-50F\*-\*\*-\*\*\*-10/11
- (F\*)-100F\*-\*\*-\*\*\*-10/11

SPERRY VICKERS  
TROY, MI. 48084

Litho in U.S.A.

Revised 8-1-79

I-3951-S