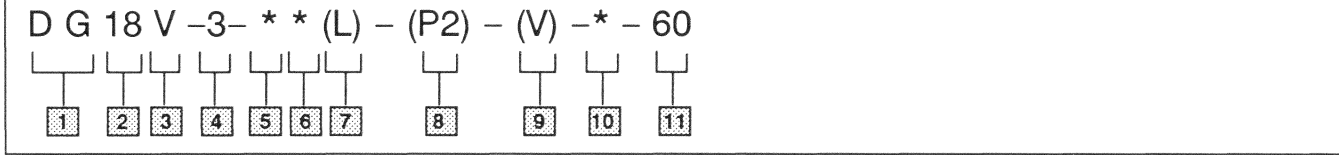


Model Code



1 Directional control valve, subplate mounted

2 Air pilot operated

3 Rated pressure
350 bar (5000 psi)

4 Interface
ISO 4401-03 (CETOP 3, NFPA D03)

5 Spool type (Center condition)

0 - Open center (All ports)
1 - Open center (P & A to T)
2 - Closed center (All ports)
3 - Closed center (P & B)
6 - Closed center (P only)
7 - Open center (T blocked)
8 - Tandem center (P to T)
11 - Open center (P & B to T)
22 - Closed center (Two-way)
31 - Closed center (P & A)
33 - Closed center (Bleed A & B)

6 Spool spring arrangement

A - Spring offset to CLY. A, (Single operator)
B - Spring centered, (Single operator)
C - Spring centered (Dual operator)
F - Spring offset, to CLY. A, shift to center (Single operator)
N - No-spring, detented

7 Build type

L - Left hand build (Single operator only)
Blank - Standard right hand build (Single operator only)

8 Manual override option

P2 - Manual operator in end cap, (single operators) (Applicable for A(L), B(L) & F(L) models only)
Blank - Overrides in operator end only

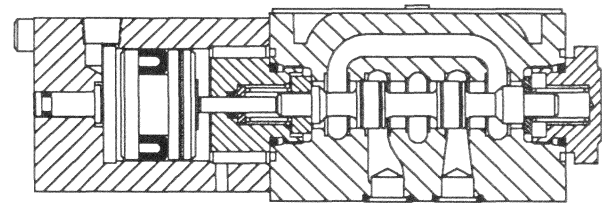
9 Actuator Identity

V - Actuator identifier included for all type 8 spools (Refer to spool assembly note *****)

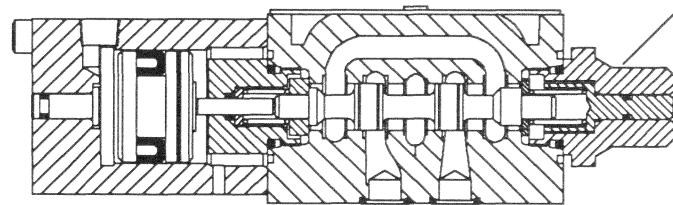
10 Thread connection type

P - 1/8" NPT threads
B - 1/8" BSP threads

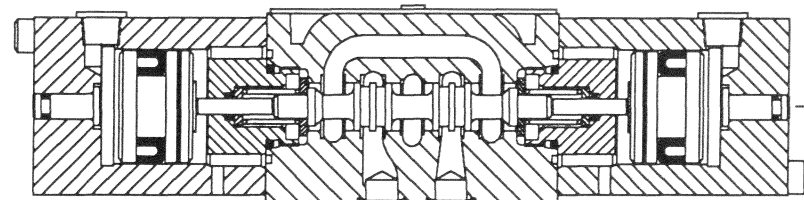
11 Design number



DG18V-3-*A-*60 Typical spring offset valve / single operator



□ 507971 Plug & pin S/A
Torque 30-36 N.m (22-26 lb. ft.)
DG18V-3-**-P2-*60 With manual operator in end cap / single operator



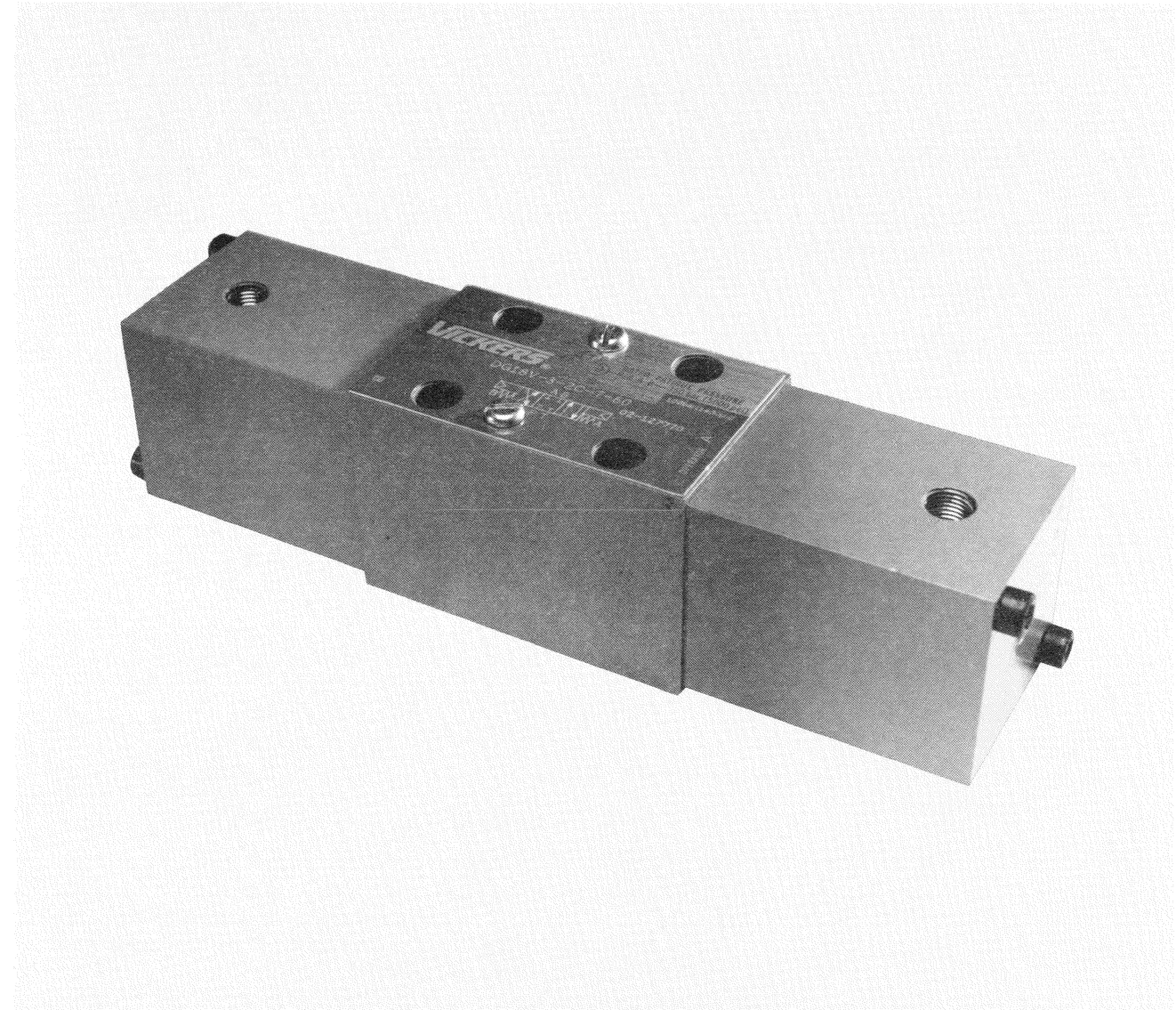
DG18V-3-*C-*60 Typical spring centered valve / dual operator

Service Data



Air Pilot Operated Directional Control Valve

DG18V-3-*A/B/F(L)-(P2)-(V)-*-60
DG18V-3-*C/N-(V)-*-60



Vickers Incorporated
A TRINOVA Company
5445 Corporate Drive
P. O. Box 302
Troy, Michigan 48007-0302
U.S.A.

Spool Type	Model	Spool
* 0	A	617498
	B, C, F	617121
	N	890189
** 1, 11	B, C, F	458263
	A	617120
	B, C, F	617118
* 2	A	617122
	B, C, F	617124
	N	617123
*** 3, 31	B, C, F	617123
* 6	A	890188
	B, C, F	617119
	N	617341
**** 7	A	458151
7	B, C, F	617125
	B, C, F	458950

SPOOL ASSEMBLY NOTE:

- * Assemble type "OA", "2A", and "6A" spool in body with longer end land opposite of operator.
- ** Assemble type "1" spool in body with narrow center land towards "A" port. Assemble type "11" spool in body with narrow center land towards "B" port.
- *** Assemble type "3" spool in body with narrow center land towards "A" port. Assemble type "31" spool in body with narrow center land towards "B" port.
- **** Assemble type "7A" and "22A" spool in body with reduced longer end Dia. towards operator.
- ***** "V" Option, operator "A" is at port "A" end of valve and/or operator "B" is at port "B" end of valve, independent of spool type. Type 8 spool valves will always have a "V" present in model code.

