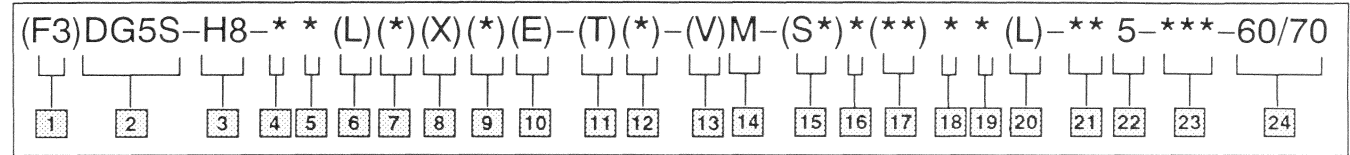


Model Code



1 Seals for mineral oil & fire resistant fluids

2 Directional control valve
Manifold or subplate mounted
Solenoid controlled
Pilot operated
Rated pressure 310 Bar (4500 psi)

3 High flow interface
8 - NFPA-D06 (ISO-4401-08)

4 Spool type (see table)

5 Spool/Spring arrangement
A - Spring offset, to CYL. A
B - Spring centered, sol. A removed
C - Spring centered
F - Spring offset, to CYL. A shift to center
N - No spring detented

6 Left hand
L - Left hand (single solenoid only)
Blank - Omit when not required

7 Manual override option
Blank - Plain override solenoid ends only
H - Waterproof override solenoid ends only
H2 - Waterproof override both ends of single solenoid
P2 - Plain override both ends of single solenoid
Y - Lockable manual overrides solenoid ends only/DC only
Z - No overrides in either end

8 Response type
X - Fast response
Blank - Standard low shock models

9 Spool control modifications
1 - Stroke adjustment
2 - Pilot choke adjustment
3 - Pilot choke & stroke adjustment
7 - Stroke adjustment CYL. A only
8 - Stroke adjustment CYL. B only
2-7 - Dual pilot choke & stroke ADJ. A port end only
2-8 - Dual pilot choke & stroke ADJ. B port end only
Blank - Omit when not required

10 Pilot pressure
E - External pilot pressure
Omit - Internal pilot pressure

11 Pilot drain
T - Internal pilot Drain
Omit - External pilot drain

12 Pressure port check valve
K - 0.35 bar (5 psi cracking pressure)
R - 3.45 bar (50 psi cracking pressure)
S - 5.20 bar (75 psi cracking pressure)
Blank - Omit when not required

13 Solenoid energization identity
Blank - Standard arrangement for ANSI B93.9 (energise solenoid A for flow P to A port)
V - Solenoid identification determined by position of solenoid. (Solenoid A at port A end and/or solenoid B at port B end. (All 4 & 8 spools are always V code)

14 Flag symbol heading electrical options & features

15 Spool indicator switch
Available on high performance models, DG4V-3, only.
Omit when not required.
S1 - Options available on U only
S2 - Options available on U only
S3 - Options available on P* only
S4 - Options available on P* only
S5 - Options available on FW/FJ only

16 Coil type
U - ISO 4400
F - Flying lead
SP1 - Single 6,3 MM spade to IEC 760
SP2 - Dual 6,3 MM spade to IEC 760

17 Electrical connections (F type coil only) omit if not required
T - Wired terminal block
PA - Instaplug male receptacle only
PB - Instaplug male & female receptacle
PA3 - Three pin connector
PA5 - Five pin connector

18 Housing (F type coils only)
W - 1/2 NPT thread wiring housing
J - 20 mm thread wiring housing

19 Electrical options
1 - ISO with fitted plug, U type coils only
6 - ISO with fitted plug, & lights
U type coils only

20 Solenoid indicator lights (F build only) used with T terminal block models. (Omit if not required)

21 Coil identification

22 Pilot valve code (tank pressure rating)
2 - 10 bar (145 psi) DG4V3-60
5 - 100 bar (1450 psi) DG4V3S-60
6 - 160 bar (2285 psi) DG4V3-60
7 - 210 bar (3000 psi) DG4V3-60

23 Pilot valve port orifices

24 Design
60 - DG4V3S-60 pilot valve
70 - DG4V3-60 pilot valve

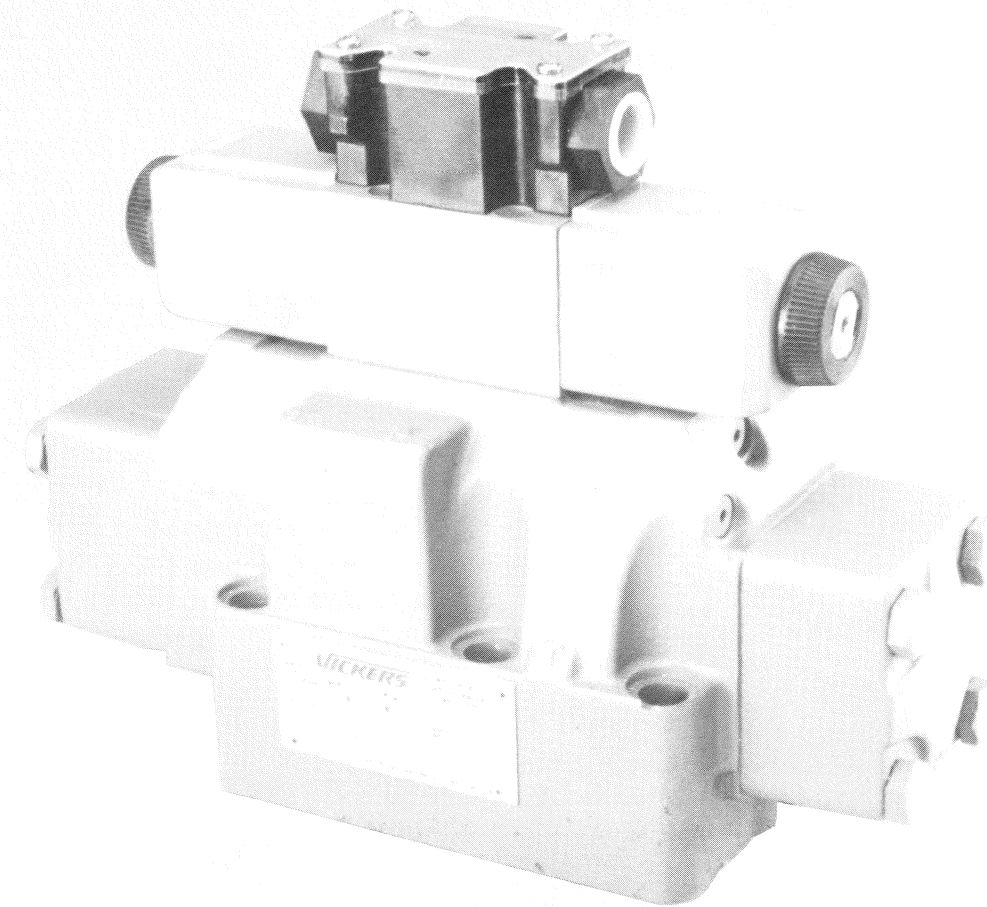
6 Thru **23** included in pilot valve model code

Service Data



Solenoid Controlled Pilot Operated Directional Valve

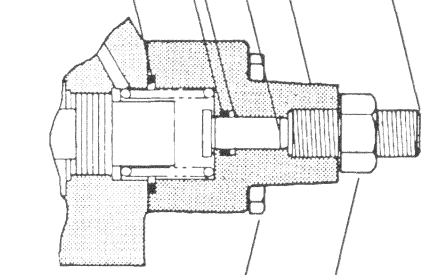
DG5S-H8-*(L)-(X)-(E)-(T)(*)-(V)M-(S*)(**)**(L)-***-***-60/70



Vickers Incorporated
A TRINOVA Company
5445 Corporate Drive
P. O. Box 302
Troy, Michigan 48007-0302
U.S.A.

Parts shown included in stroke ADJ. kit 941156. Order two kits if stroke ADJ. is required both ends.

- 471207 ADJ. Screw
- 787125 Cover
- 223075 Piston
- ▲ 197573 B.U. Ring
- ▲ 262335 O-Ring
- ▲ 262403 O-Ring



- 470844 Screw (4 Req'd)
Torque 49-59 N.m.
(36-44 lb. ft.)
- 470684 Nut

PLUG	TORQUES (OILED)	
	N.m.	lb. in.
113000	5.0-5.9	45-52
237588		
343740	15.0-16.0	133-142
398071	9.8-10.2	87-90
407533	12.1-12.4	107-110

MAIN STAGE SPOOL TYPE	AVAILABLE VALVE TYPE	SPOOL	MAIN STAGE ID PLATE	
			"A" ONLY	B/C/F/N
0	A/B/C//N	786350		400976
1		*786557		400977
2		786349		400978
3		*786558		400979
4		628162	400975	400980
6		786559		400981
8		627221		400980
9		786561		400976
11		*786557		632700
31		*786558		580475
33		786562		400981

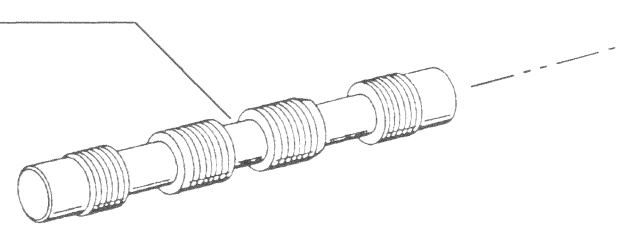
*** SPOOL ASSEMBLY NOTE**

Assemble type 1 & 3 spools with narrow center land toward "A" end of valve. "A" end is defined as being closest to CYL. port "A". Type 11 & 31 spools are installed in reverse of type 1 & 3 with narrow center lands toward "B" end of valve.

VALVE MODEL CODE	MAIN STAGE SPOOL TYPE	PILOT VALVE MODEL CODE
DG5S-H8-*A-60	0, 1, 2, 3, 6, 9,	DG4V-3S-2A-60
DG5S-H8-*A-70	11, 31, 33	DG4V-3-2A-60
DG5S-H8-*A-60	4 & 8	DG4V-3S-28A-60
DG5S-H8-*A-70		DG4V-3-28A-60
DG5S-H8-*B-60	0, 1, 2, 3, 6, 9,	DG4V-3S-6B-60
DG5S-H8-*B-70	11, 31, 33	DG4V-3-6B-60
DG5S-H8-*B-60	4 & 8	DG4V-3S-68B-60
DG5S-H8-*B-70		DG4V-3-68B-60
DG5S-H8-*C-60	0, 1, 2, 3, 6, 9,	DG4V-3S-6C-60
DG5S-H8-*C-70	11, 31, 33, 52, 521	DG4V-3-6C-60
DG5S-H8-*C-60	4 & 8	DG4V-3S-68C-60
DG5S-H8-*C-70		DG4V-3-68C-60
DG5S-H8-*N-60	0, 1, 2, 3, 6, 9,	DG4V-3S-6N-60
DG5S-H8-*N-70	11, 31, 33	DG4V-3-6N-60
DG5S-H8-*N-60	4 & 8	DG4V-3S-68N-60
DG5S-H8-*N-70		DG4V-3-68N-60

See pilot valve service drawing for parts breakdown

- 786523 Washer (2 Req'd)
Omit spring offset pilot models
- 783665 Spring (2 Req'd)
Omit spring offset pilot models
- ▲ 262403 O-Ring (2 Req'd)
- 573674 Cover (2 Req'd)
- 470844 Screw (8 Req'd)
Torque 49-59 N.m. (36-44 lb. ft.)



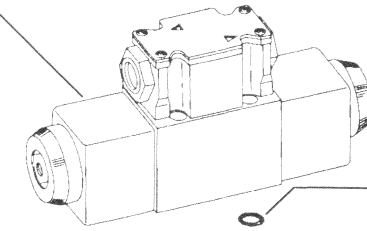
- ▲ Included In F3 Seal Kit 696895
- ★ Included In Plug Kit 941167
- Included In Fastener Kit 941175
- ◆ Not Available For Sale
- ♣ Used On Check Valve Models Only
- Plug Torques (See Table)
- Available Only In Kit Of 25 Each

PILOT STAGE BOLT KIT (INCLUDES 4 ATTACHING BOLTS)

MODEL	BOLT KIT
W/O Pilot choke	696892
W/ Pilot choke	696893

Torque 4.5-5.7 N. m. (39.8-50.4 lb. in.)
See pilot choke service drawing for parts breakdown

This solenoid removed on right hand A & B models. Refer to service drawings for more detailed information on left hand valves.



PLUG INSTALLATION TABLE

MODEL	"A" PLUG	"B" PLUG	"C" PLUG
DG5S-H8-**-	DOES NOT EXIST	237588	---
DG5S-H8-**-E		113000	237588
DG5S-H8-**-X-E		113000	---
DG5S-H8-**-KRS	237588	DOES NOT EXIST	---
DG5S-H8-**-E-KRS	113000		237588
DG5S-H8-**-X-KRS	---		---
DG5S-H8-**-X-E-KRS	113000	---	---

- ★ 113000 Solid plug
- ★ 237588 Orifice plug

- ▲ 262332 O-Ring (4 Req'd)
- ★● 471119 Set screw plug (Remove for internal drain, "T" in model code) Bond in place with Loctite H/S or equivalent, on external pilot drain models.
- ★● 398071 Plug
- ▲ 263492 O-Ring
- ▲ 263492 O-Ring
- ★● 398071 Plug
- ▲ 263492 O-Ring (2 Req'd)
- ★● 398071 Plug (2 Req'd)
- ◆ 573675 Body (standard)
- ♣◆ 577493 Body (Check valve model)
- 199312 Rest pin (2 Req'd)
- ★● 343740 Plug (2 Req'd this face)
- ▲ 263494 O-Ring (2 Req'd this face)
- ▲ 263492 O-Ring (3 Req'd this face)
- ★● 398071 Plug (3 Req'd this face)
- ★● "B" Plug (see table)
- ♣ Spring (see table)
- ▲ 262394 O-Ring (4 Req'd)
A, B, P & T Ports
- ◆ 573675 Body (standard)
- ♣◆ 577493 Body (Check valve model)
- 199312 Rest pin (2 Req'd)
- ★● 343740 Plug (2 Req'd this face)
- ▲ 263494 O-Ring (2 Req'd this face)
- ▲ 263492 O-Ring (3 Req'd this face)
- ★● 398071 Plug (3 Req'd this face)
- ★● "B" Plug (see table)
- ♣ Spring (see table)
- ▲ 262394 O-Ring (4 Req'd)
A, B, P & T Ports

Refer to other end of valve for part numbers

MODEL ♣ SPRING COLOR CODE

DG5S-H8-K	398130	---
DG5S-H8-R	398131	YELLOW
DG5S-H8-S	398132	RED