

MODEL CODE BREAKDOWN

C PF 2 * - 06 - * - * - (B) - (P) - (1) - 3 (S) - (*) - (V) M - (S*) *** (L) - * * - 20**

1 2 3 4 5 6 7 8 9 10 11 12 13 14 15 16 17 18 19 20

1 Valve Function

C - Relief

2 Mounting Type

PF - Pump flange mounting

3 Unit Type

2 - Single pressure with vent

4 Flange Type

S - SAE J518C 4-bolt flange standard series code 61 (All sizes)
V - SAE J518C 4-bolt high pressure code 62 (12 size only)

5 Valve Size

06 - 3/4 inch
08 - 1 inch
10 - 1 1/4 inch
12 - 1 1/2 inch

6 Maximum Pressure Adjustment

A - 50 bar (725 psi)
B - 100 bar (1450 psi)
F - 207 bar (3000 psi)
G - 275 bar (4000 psi) -
350 bar (5000 psi) - (CPF2V-12 models only)

7 Control Type

W - Screw adjust with locknut
H - Handknob adjust without key
K - Micrometer adjust with keylock

8 Thread Type

Remote Control/Vent Connection
Blank - SAE-6 O-ring boss port (.5625-18 UNF-2B thd.)
B - BSP-G 1/4 (1/4" BSPF)
Pilot Valve Mounting Threads
Blank - 10-24 UNC-2B
B - M5-6H x 12

9 Remote Pilot

Blank - Internal pilot
P - External pilot

10 Remote Drain

Blank - Internal drain
1 - External drain

11 Vent Valve

3 - Standard performance
3S - High performance - uses OBL type spool/spring arrangement; other features are optional. Refer to Vickers Service literature I-3886-S.

12 Manual Override Options

13 Solenoid Energization Identification

14 Electrical Options Flag

15 Spool Position Monitoring Switch

16 Solenoid Type/Electrical Connections

17 Indicator Lights

18 Coil Identification

19 Tank Rating Pressure

2 - 10 bar (145 psi) for spool position indicator models.
5 - 100 bar (1450 psi) for standard performance models, DG4V-3(S), with AC or DC solenoids.
6 - 210 bar (3045 psi) for high performance models, DG4V-3, with AC solenoids.
7 - 210 bar (3045 psi) for high performance models, DG4V-3 with DC solenoids.

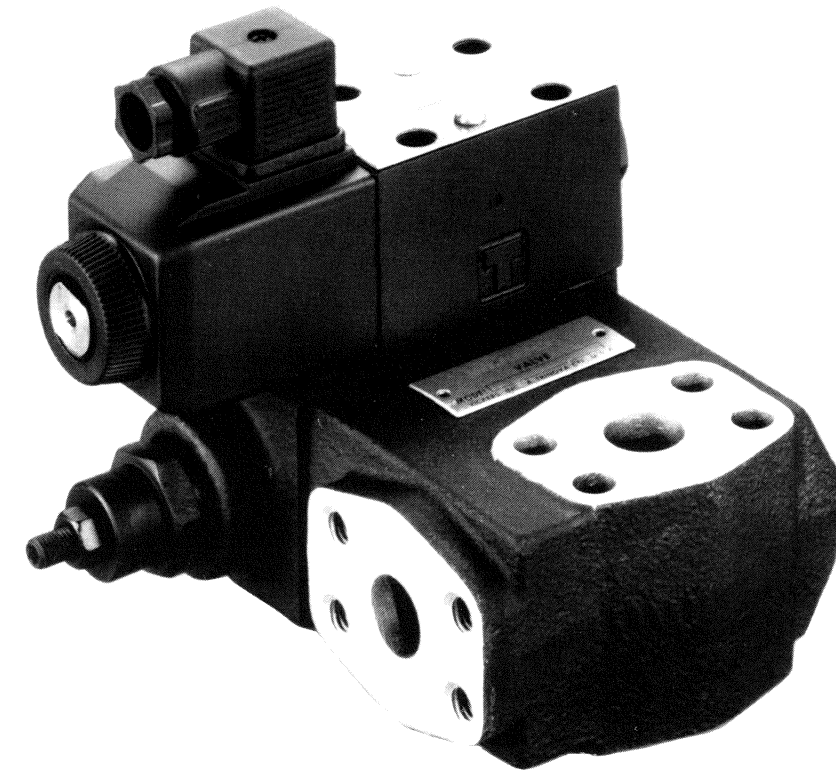
20 Design Number

Service Data

VICKERS

Flange Mounted Relief Valves with Vent

CPF2*-06/08/10/12-*-*-20



VICKERS
A TRINNOVA Company

Vickers Incorporated
5445 Corporate Drive
Troy, Michigan
48007-0302
U.S.A.

Vickers Incorporated
A TRINNOVA Company
5445 Corporate Drive
Troy, Michigan 48007-0302
U.S.A.

Printed in U.S.A.

Released 8-01-93

I-3778-S

CPF2S-06/08

CODE	■ PRESSURE ADJ. S/A	MAX. PRESSURE bar (psi)
AW	02-140463	50 (725)
BW	02-140464	100 (1450)
FW	02-140465	207 (3000)
GW	02-140466	275 (4000)
AH	02-140467	50 (725)
BH	02-140468	100 (1450)
FH	02-140469	207 (3000)
GH	02-140470	275 (4000)
AK	02-140471	50 (725)
BK	02-140472	100 (1450)
FK	02-140473	207 (3000)
GK	02-140474	275 (4000)

Torque S/A to 65-75 N.m (48-55 lb.ft.)

- ▲ 690331 "O"Ring
- ▲ 893376 Back-up ring
- ▲ 689294 "O"Ring
- ▲ 893377 Back-up ring

Pressure adj. S/A (See table)

- ◆ 262344 "O"Ring
- ◆ 262362 "O"Ring
- ◆ 197600 Back-up ring
- ◆ 819810 Spring

TORQUES Part	N.m	lb.ft.
298137	65-80	48.0-59.0
315932	29-32	21.3-23.6
398071	9.8-10.2	7.2-7.5
473919	29-32	21.3-23.6
977935		
977937	2-4	1.5-3.0
977938		

- ▲ Included In Seal Kit 02-301166 (SAE)
- Included In Seal Kit 02-301167 (BSP)
- ◆ Included In Cartridge S/A
- Included In Press. Adj. S/A

■ Bond in place with Loctite 222 or equivalent

Parts prefixed with symbols available only in kits.

RELIEF VALVE BLOCK

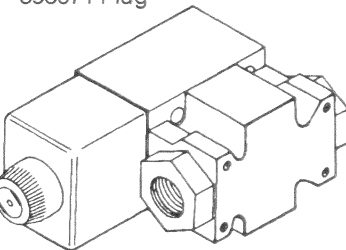
Internal Drain	02-155251
External Drain (Shown)	02-301152 SAE 02-301153 BSP

298137 Screw (4 Req'd)

Relief Valve Block (See table)

- 398071 Plug
- ▲ 263492 "O"Ring (2 Req'd)

- 977937 Orifice
- ▲ 263492 "O"Ring
- 398071 Plug



DG4V3(S)-0BL-*-60**
Refer to I-3886-S for pilot valve parts breakdown
473728 Pilot valve attaching screws (4 req'd) (Ref.)
Torque 4.5-5.7 N.m (3.3-4.2 lb. ft.)

◆ 02-111938 Poppet & sleeve S/A

- ▲ 262330 "O"Ring
- 977938 Orifice
- ▲ 594047 Back-up ring
- ◆ 262362 "O"Ring

- 977935 Plug ("P" External pilot only)
- Plug & "O"Ring (See table) (Internal pilot only)

	SAE	BSP
PLUG	315932	473919
"O"RING	▲ 263496	● 704766

CARTRIDGE BLOCK SIZE	SAE		BSP	
	SAE	BSP	SAE	BSP
06	02-155245	02-155265		
08	02-155247	02-155267		

CPF2S/V-10/-12

CODE	■ PRESSURE ADJ. S/A	MAX. PRESSURE bar (psi)
AW	02-140463	50 (725)
BW	02-140464	100 (1450)
FW	02-140465	207 (3000)
GW	02-140466	275 (4000)
AH	02-140467	50 (725)
BH	02-140468	100 (1450)
FH	02-140469	207 (3000)
GH	02-140470	275 (4000)
AK	02-140471	50 (725)
BK	02-140472	100 (1450)
FK	02-140473	207 (3000)
GK	02-140474	275 (4000)

Torque S/A to 65-75 N.m (48-55 lb.ft.)

- ▲ 690331 "O"Ring
- ▲ 893376 Back-up ring
- ▲ 689294 "O"Ring
- ▲ 893377 Back-up ring

Pressure adj. S/A (See table)

TORQUES Part	N.m	lb.ft.
10955	110-115	81.1-84.8
315932	29-32	21.3-23.6
398071	9.8-10.2	7.2-7.5
473919	29-32	21.3-23.6
873753		
977935	2-4	1.5-3.0
986032		

- ▲ 262330 "O"Ring
- 977935 Plug (External Drain Only)
- ▲ 262401 "O"Ring (2 Req'd)
- ◆ 277707 Back-up ring (4 req'd)

- ▲ 262399 "O"Ring - 10
- ▲ 262402 "O"Ring - 12

- ▲ Included In Seal Kit 02-301168 (SAE)
- Included In Seal Kit 02-301169 (BSP)
- ◆ Included In Cartridge S/A
- Included In Press. Adj. S/A

■ Bond in place with Loctite 222 or equivalent

Parts prefixed with symbols available only in kits.

RELIEF VALVE BLOCK

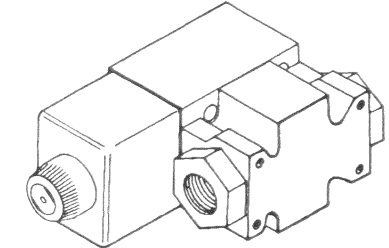
Internal Drain	02-155258
External Drain (Shown)	02-301156 SAE 02-301157 BSP

10955 Screw (4 Req'd)

- 398071 Plug
- ▲ 263492 "O"Ring
- 398071 Plug
- ▲ 263492 "O"Ring (2 Req'd)

Relief Valve Block (See table)

- 986032 Orifice



DG4V3(S)-0BL-*-60**
Refer to I-3886-S for pilot valve parts breakdown
473728 Pilot Valve Attaching Screws (4 req'd) (Ref.)
Torque 4.5-5.7 N.m (3.3-4.2 lb. ft.)

◆ 02-157559 Cartridge valve insert

- ▲ 262330 "O"Ring
- 977935 Plug
- ▲ 262401 "O"Ring (2 Req'd)
- ◆ 277707 Back-up ring (4 req'd)
- ▲ 262330 "O"Ring
- 873753 Orifice

- 977935 Plug ("P" External pilot only)
- Plug & "O"Ring (See table) (Internal pilot only)

	SAE	BSP
PLUG	315932	473919
"O"RING	▲ 263496	● 704766

CARTRIDGE BLOCK SIZE	SAE		BSP	
	SAE	BSP	SAE	BSP
10	02-155254	02-155269		
12	02-155260	02-155850		
V12	02-155263	02-155852		