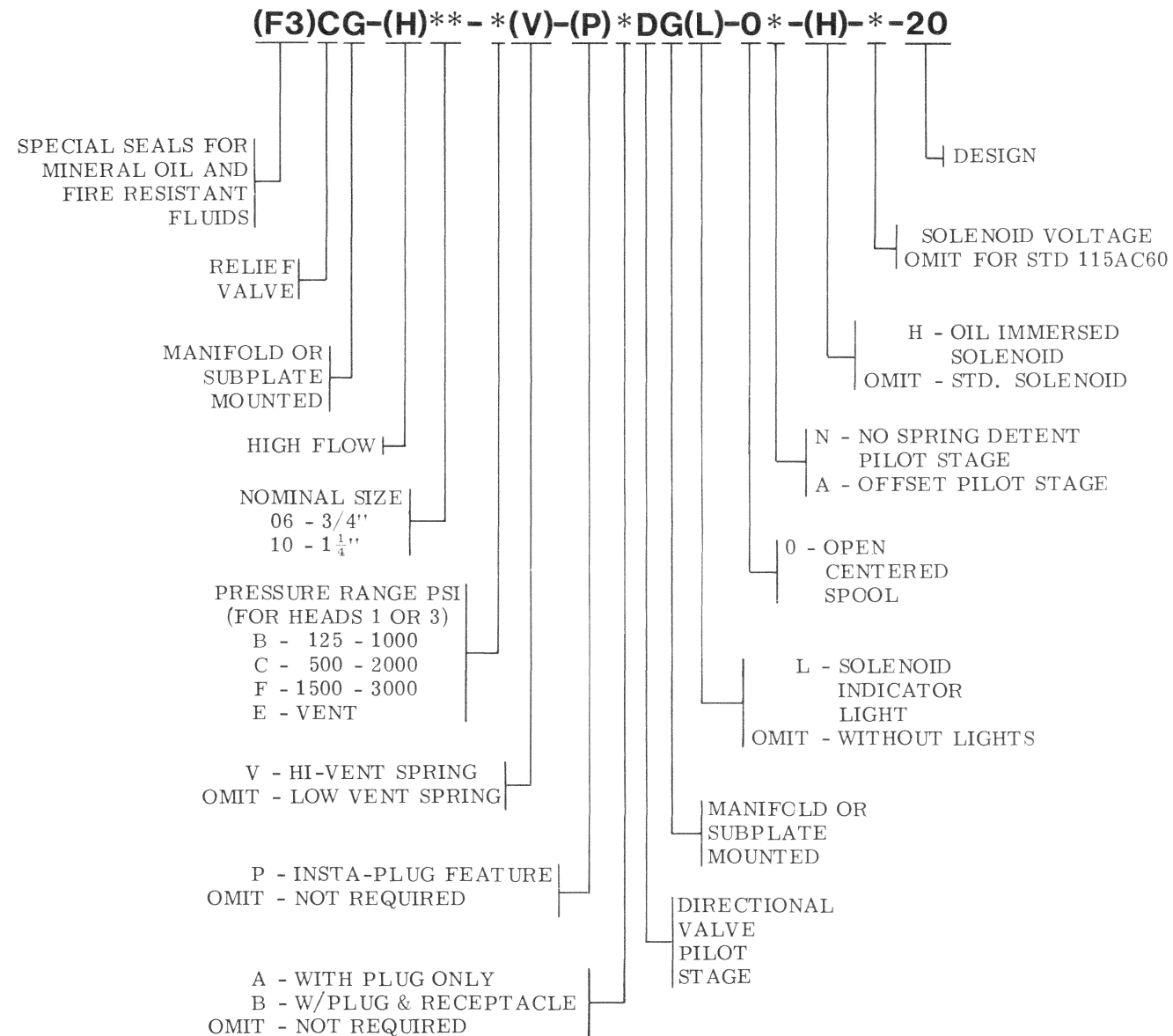


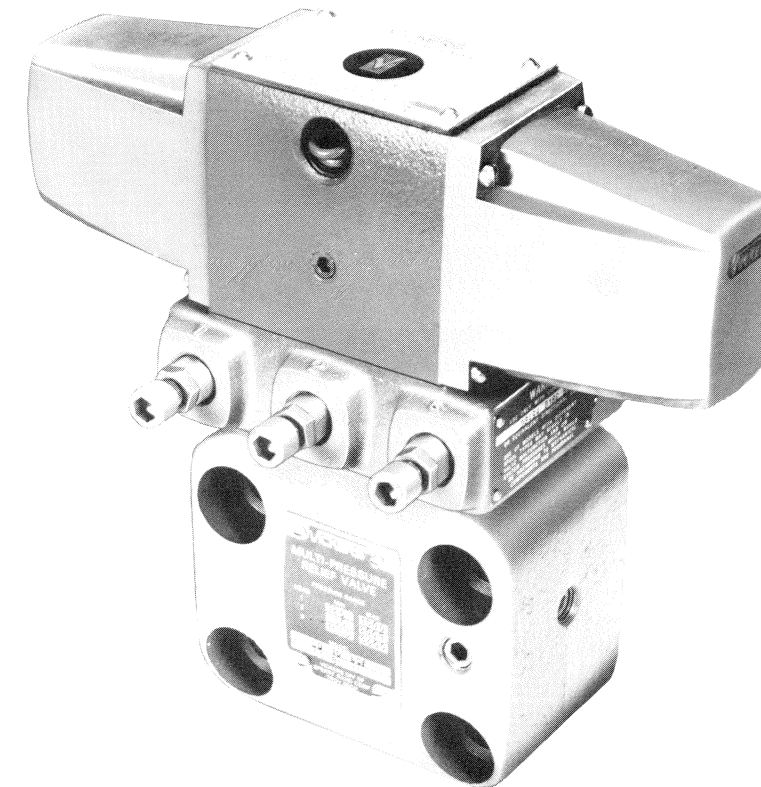


MODEL CODE BREAKDOWN



Multi-Pressure Relief Valves

CG-(H)-06-*(V)-(P)*DG(L)-0*-(H)-*-20
 CG-(H)-10-*(V)-(P)*DG(L)-0*-(H)-*-20



For satisfactory service life of these components, use full flow filtration to provide fluid which meets ISO cleanliness code 18/15 or cleaner. Selections from Vickers OFP, OFR, and OFRS series are recommended.

Litho in U. S. A.

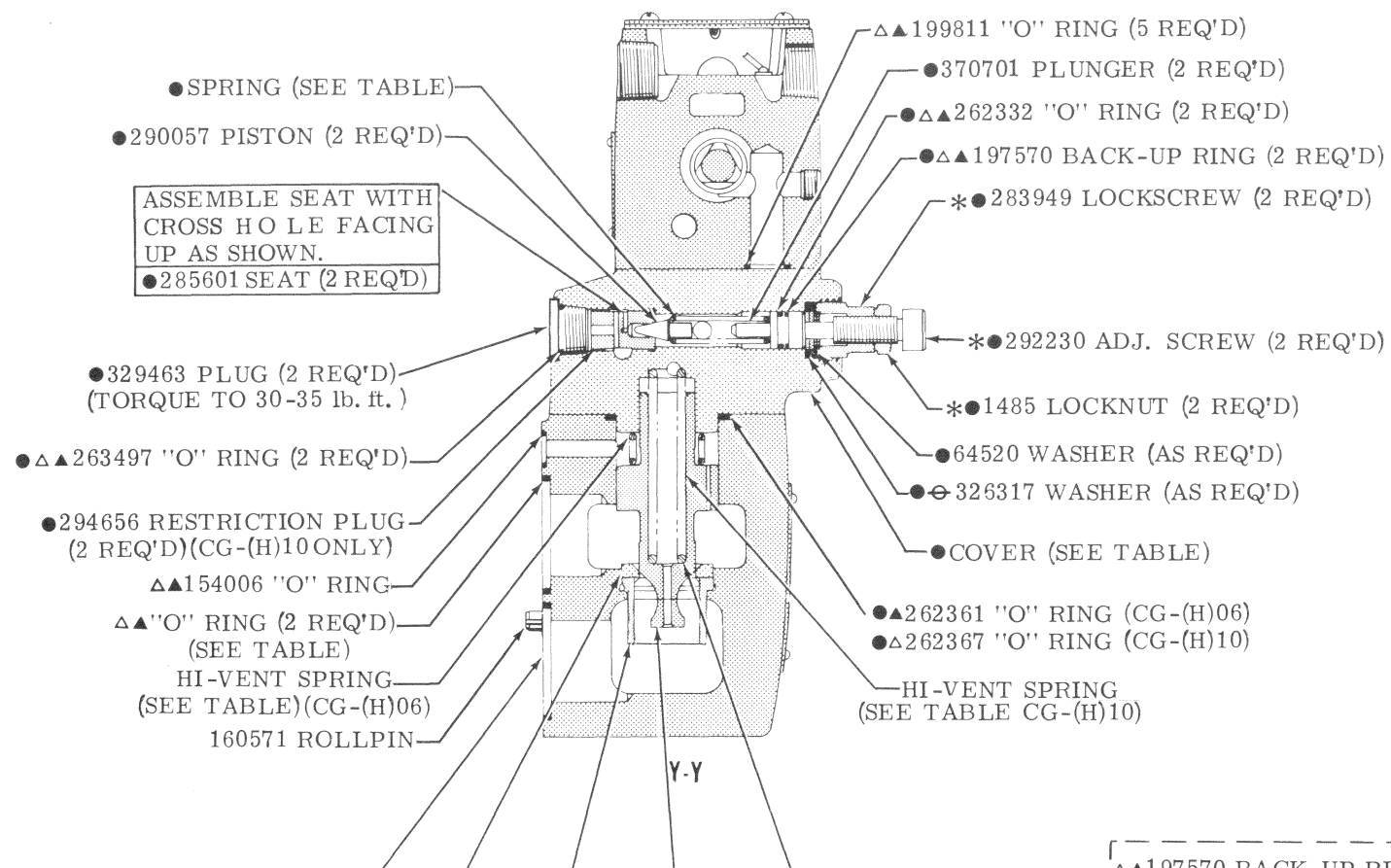
Vickers Incorporated
 A TRINOVA Company
 5445 Corporate Drive
 P.O. Box 302
 Troy, Michigan 48007-0302
 U.S.A.

Revised 11-1-85

I-3685-S

| MODEL | HEAD #1 | | HEAD #3 | | ● CG-(H)06 COVER S/A | ● CG-(H)10 COVER S/A |
|-------------------|---------|-----------------------|---------|-----------------------|-------------------------|-------------------------|
| | SPRING | PRESSURE RANGE PSI | SPRING | PRESSURE RANGE PSI | | |
| CG-(H)06/(H)10-BC | 2280 | 125 - 1000 | 583937 | 500 - 2000 | 942155 | 942156 |
| CG-(H)06/(H)10-BF | | | 2281 | 1500 - 3000 | — | — |
| CG-(H)06/(H)10-CF | 583937 | 500 - 2000 | — | — | — | — |

● INCLUDED IN
COVER SUBASSY



| MODEL | "O" RING (2 REQ'D) | BODY | SEAT | SLEEVE | HYDRO CONE | LO-VENT SPRING | HI-VENT SPRING | COVER |
|--------|-----------------------|--------|--------|--------|---------------|-------------------|-------------------|--------|
| CG-06 | ▲ 154020 | 580456 | 343153 | — | 343154 | 2077 | 184458 | 370666 |
| CG-H06 | — | — | 589473 | 589472 | — | — | — | — |
| CG-10 | ▲ 154024 | 581703 | 283954 | — | 283952 | 291822 | 291821 | 370671 |
| CG-H10 | — | — | 587996 | 400730 | — | — | — | — |

USE EITHER A LO-VENT OR
HI-VENT SPRING AS SHOWN.
DO NOT USE BOTH.

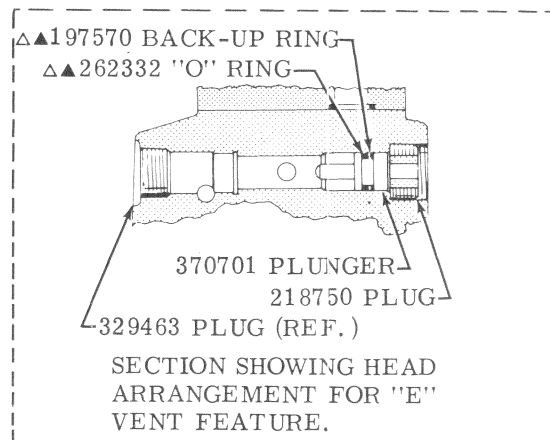
*NOTE
COAT 292230 ADJ. SCREW, 283949
LOCK SCREW, AND 1485 LOCKNUT
WITH OIL PRIOR TO ASSEMBLY.

INCLUDED IN
F3CG-(H)06
SEAL KIT 919684

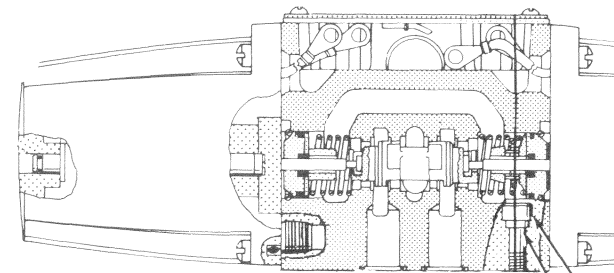
INCLUDED IN
F3CG-(H)10
SEAL KIT 919685

⊖ THIS PART USED AT FINAL TEST TO
OBTAIN CORRECT PRESSURE RANGE

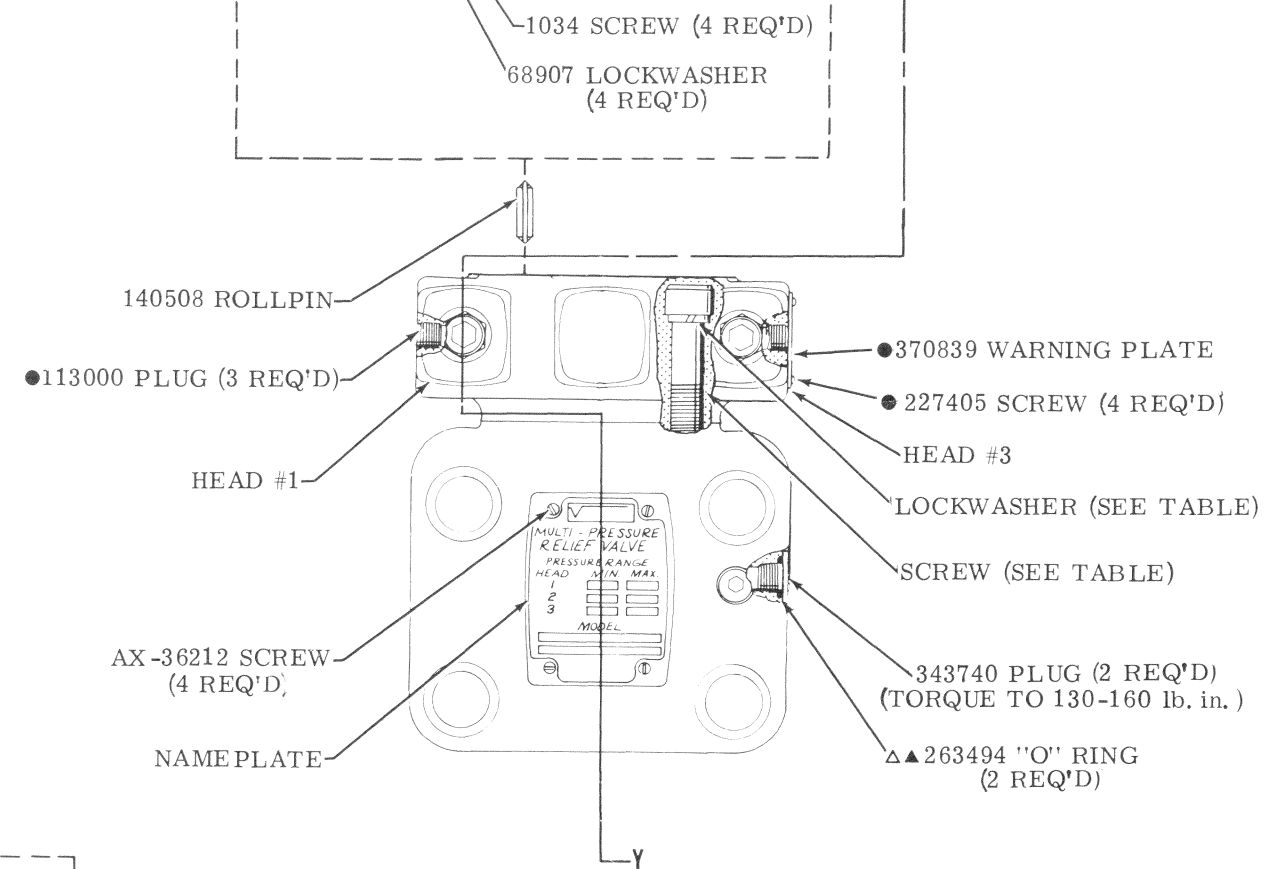
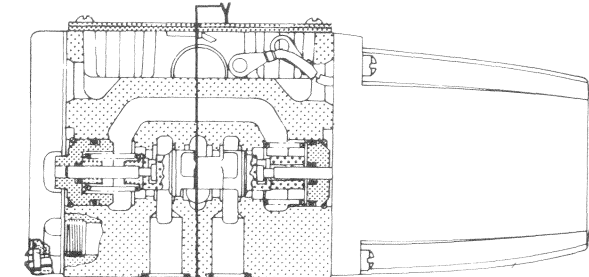
ALL SEALS, EXCEPT DIRECTIONAL VALVE &
RELIEF VALVE INTERFACE SEALS, ARE F3.
USE F3 SEAL KIT TO SERVICE ALL UNITS.



DG4S4-010N-* -51 PILOT VALVE
(REFER TO I-3471-S FOR PARTS
INFORMATION)



DG4S4-010A-* -50 PILOT VALVE
(REFER TO I-3478-S FOR PARTS
INFORMATION)



| MODEL | SCREW (4 REQ'D) | LOCKWASHER (4 REQ'D) |
|----------|--------------------|-------------------------|
| CG-(H)06 | 1036 | 68907 |
| CG-(H)10 | 1076 | 68909 |

WARNING
DO NOT USE OTHER THAN A DG4S4-010A-* -50 OR A
DG4S4-010N-* -51 DIRECTIONAL VALVE AS THE
PILOT FOR THIS RELIEF VALVE. USE OF A DIF-
FERENT PILOT CAN BLOCK THE RELIEF VALVE,
CAUSING EXCESSIVE SYSTEM PRESSURE.

INSTA-PLUG CONNECTORS FOR THE
DG4S4 PILOT STAGE ARE SHOWN ON
PARTS DRAWING I-3487-S.