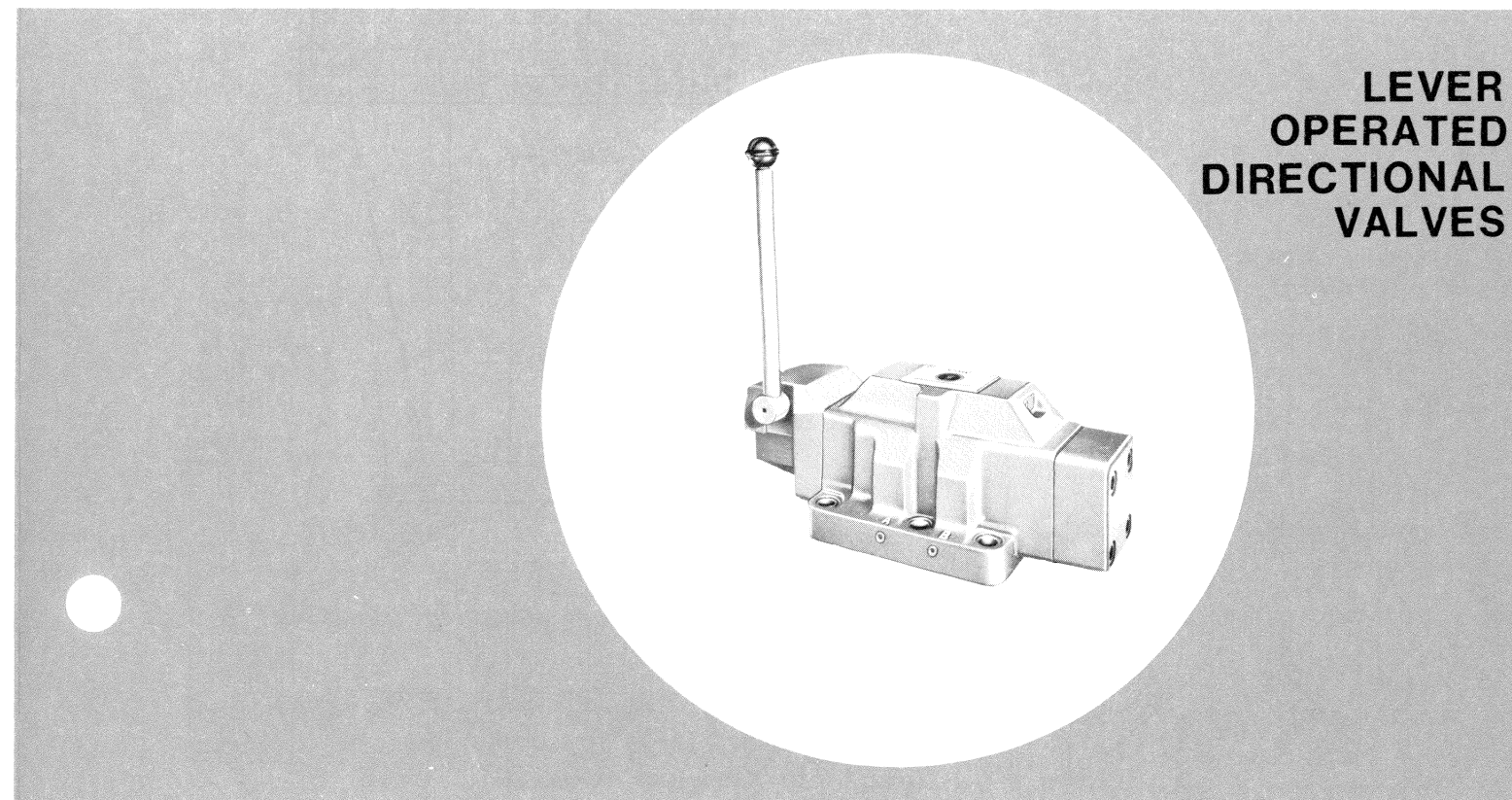
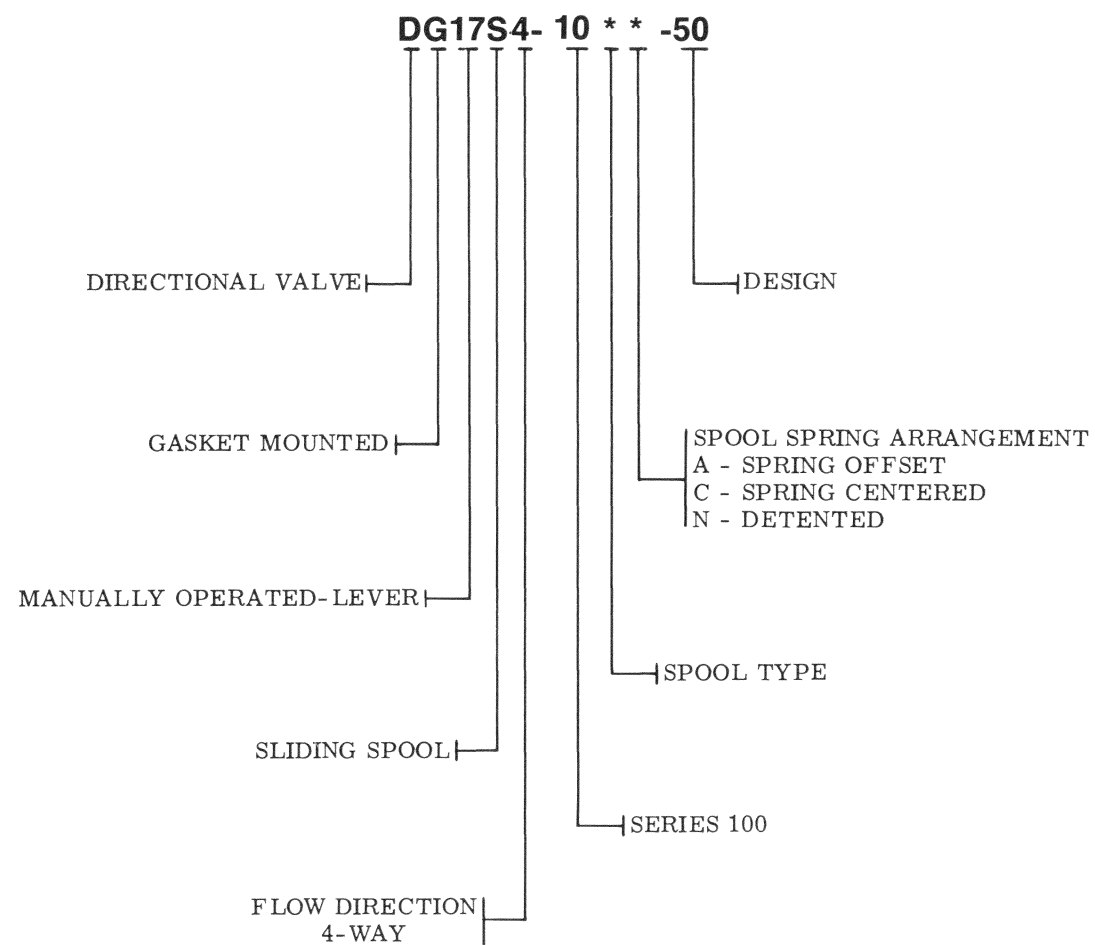
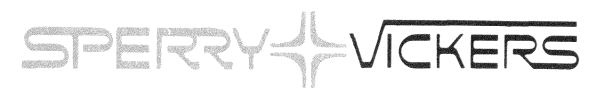


MODEL CODE BREAKDOWN



SERVICE PARTS INFORMATION

DG17S4-10-50**

To insure sustained efficiency and maximum trouble-free life of this precision equipment, initial and continuous filtration of the fluid medium to 25 microns or less is essential. (For information pertaining to Vickers economical 10 micron filters, see installation drawing 522140.)

Litho in U. S. A.

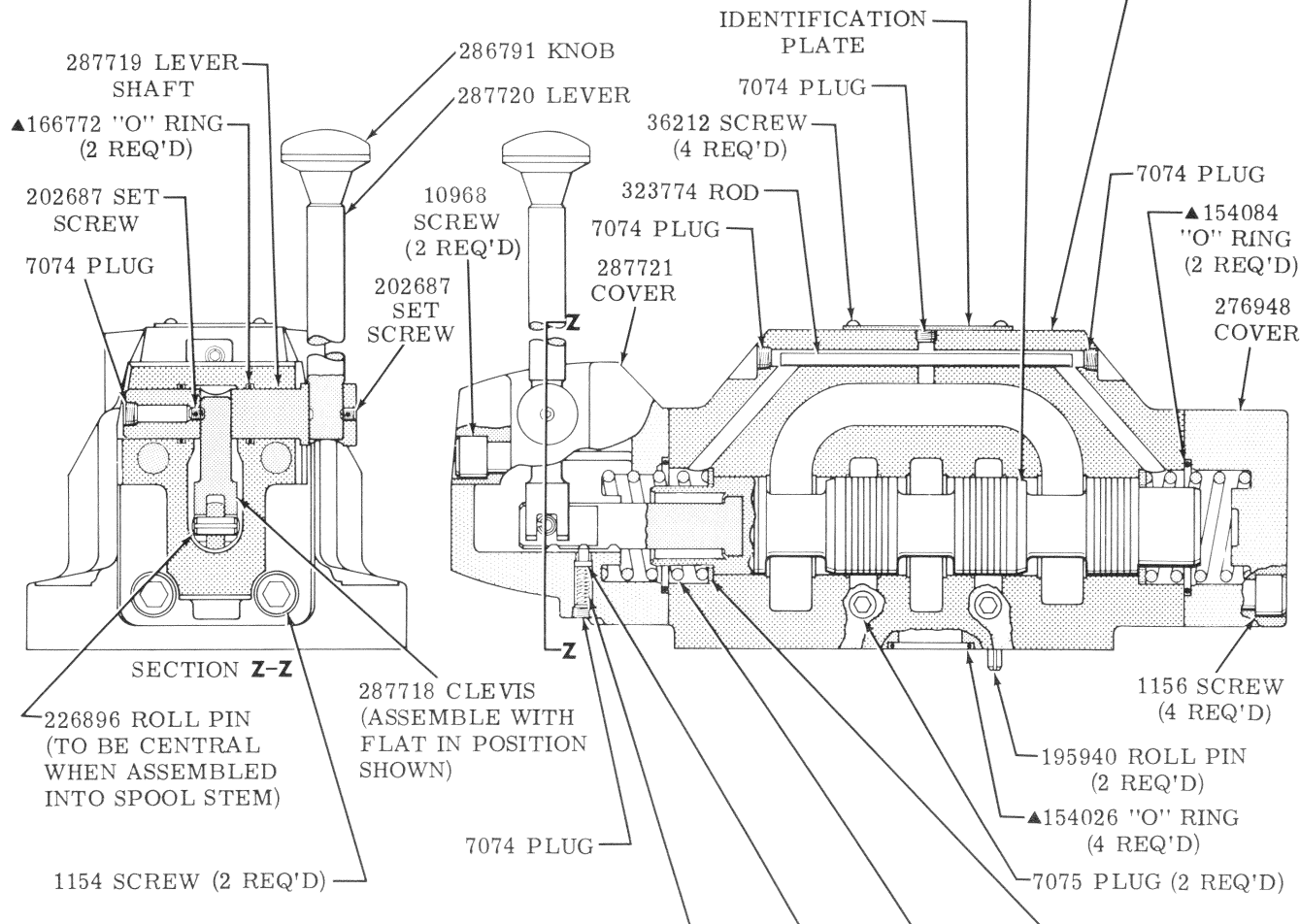
SPERRY VICKERS
TROY, MI. 48084

Revised 5-1-75

I-3568-S

SPRING CENTERED
 MODEL: DG17S4-10*C-50
 DETENTED
 MODEL: DG17S4-10*N-50

MODEL	SPOOL SUBASSY	BODY
DG17S4-100*-50	282281	282292
DG17S4-102*-50	282287	
DG17S4-104*-50	282286	
DG17S4-106*-50	282283	
DG17S4-108*-50	282339	
DG17S4-1033*-50	282285	



MODEL	SPRING	DETENT	SPRING (2 REQ'D)	WASHER (2 REQ'D)
DG17S4-10*C-50	—	—	281803	107758
DG17S4-10*N-50	323608	19350	—	—

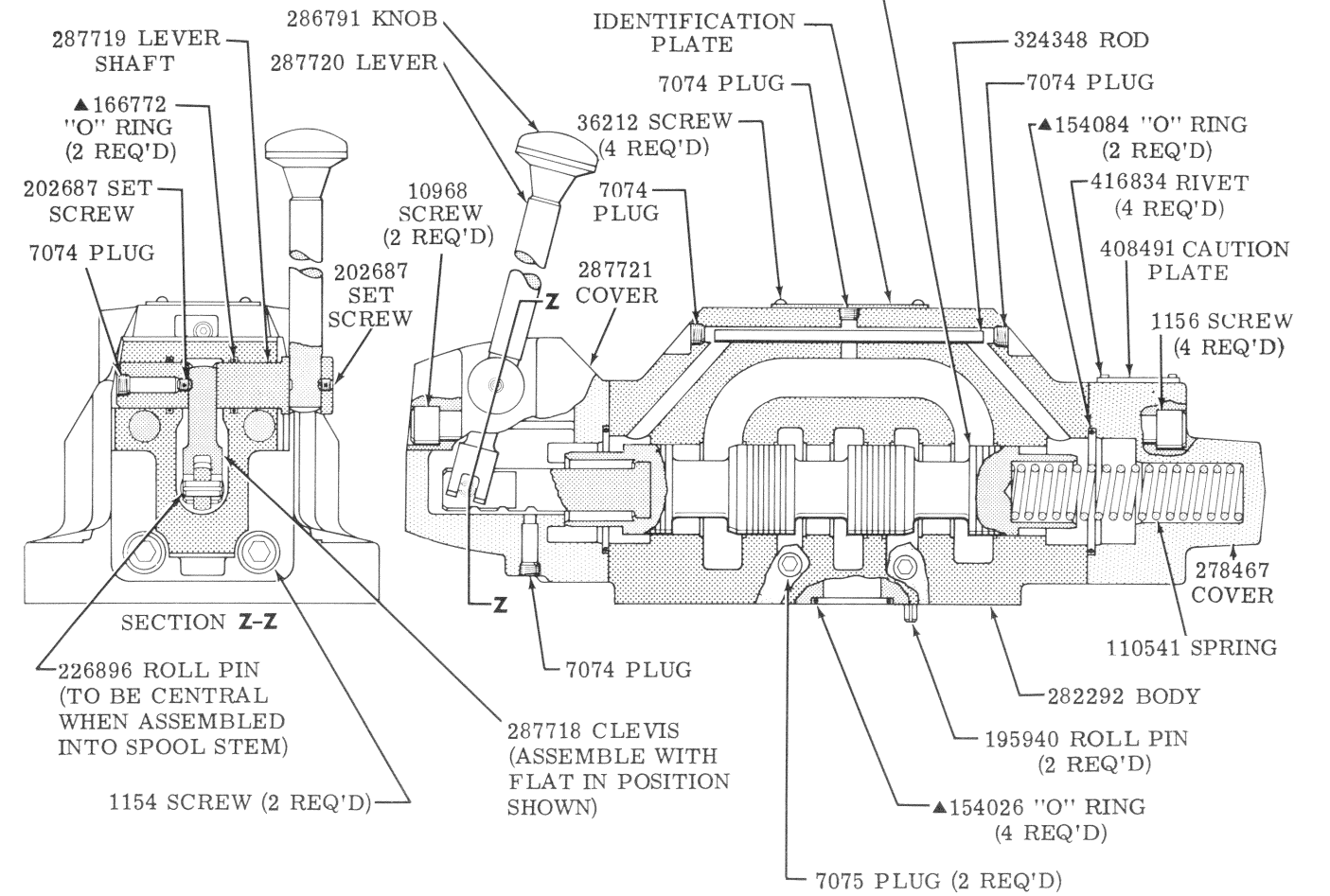
RIGHT HAND ASSEMBLY SHOWN. IN LEFT HAND ASSEMBLY, END COVERS AND SPOOL ARE REVERSED. EXAMPLE OF LEFT HAND MODEL: DG17S4-10**-50-L. H.

▲ INCLUDED IN 919433 GASKET KIT

SPRING OFFSET
 MODEL: DG17S4-10*A-50

MODEL	SPOOL SUBASSY
DG17S4-100A-50	282281
DG17S4-102A-50	282287
DG17S4-106A-50	282283

CAUTION
 END CAPS ARE UNDER HIGH SPRING LOAD.



RIGHT HAND ASSEMBLY SHOWN. IN LEFT HAND ASSEMBLY, END COVERS, SPRING & SPOOL ARE REVERSED. EXAMPLE OF LEFT HAND MODEL: DG17S4-10*A-50-L. H.

▲ INCLUDED IN 919433 GASKET KIT