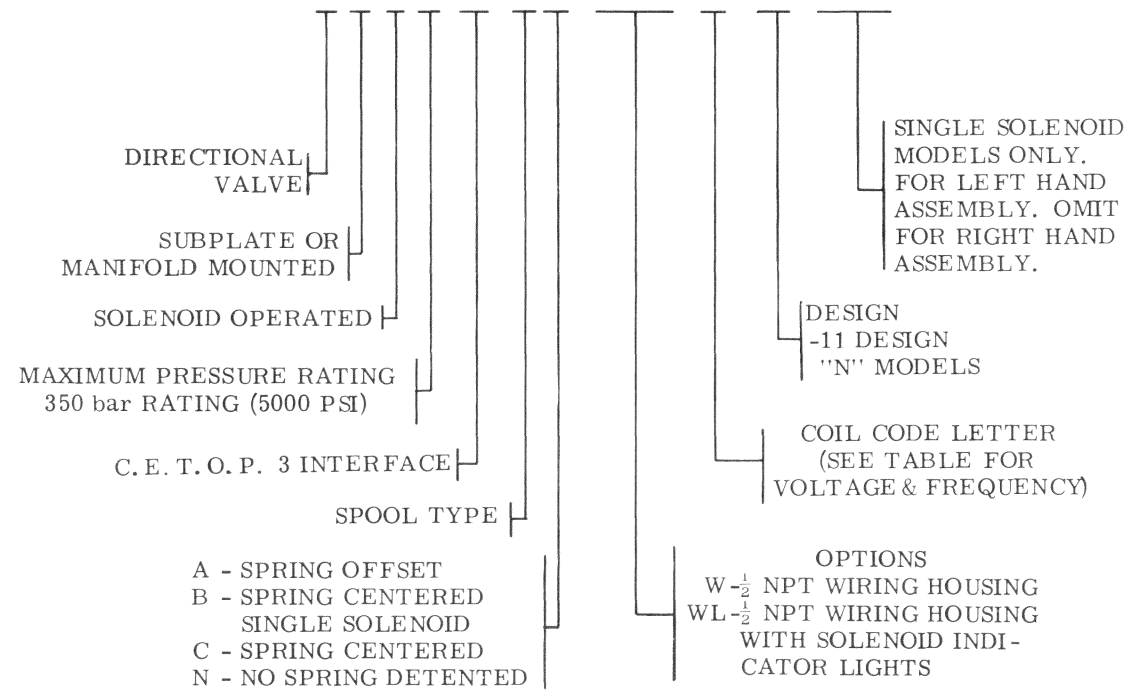
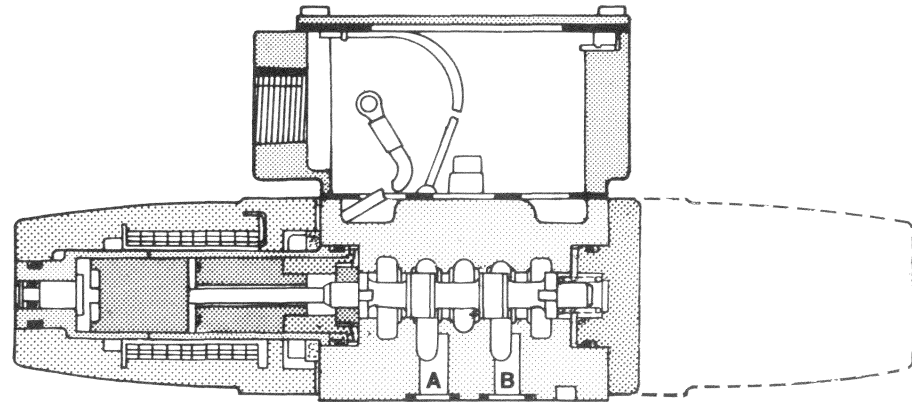


MODEL CODE BREAKDOWN

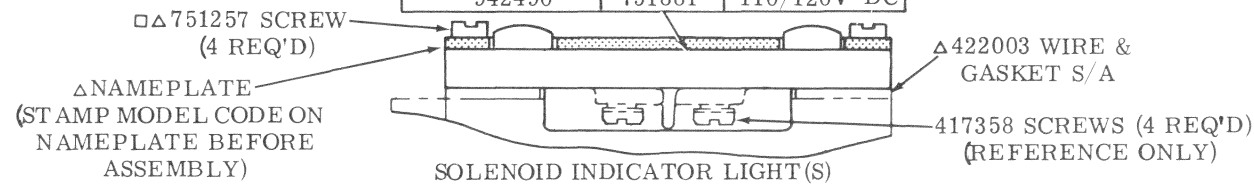
DG4V-3-**-W(L)-*-10-(LH)



NOTE: (F3) VITON SEALS ARE STANDARD IN THIS UNIT.



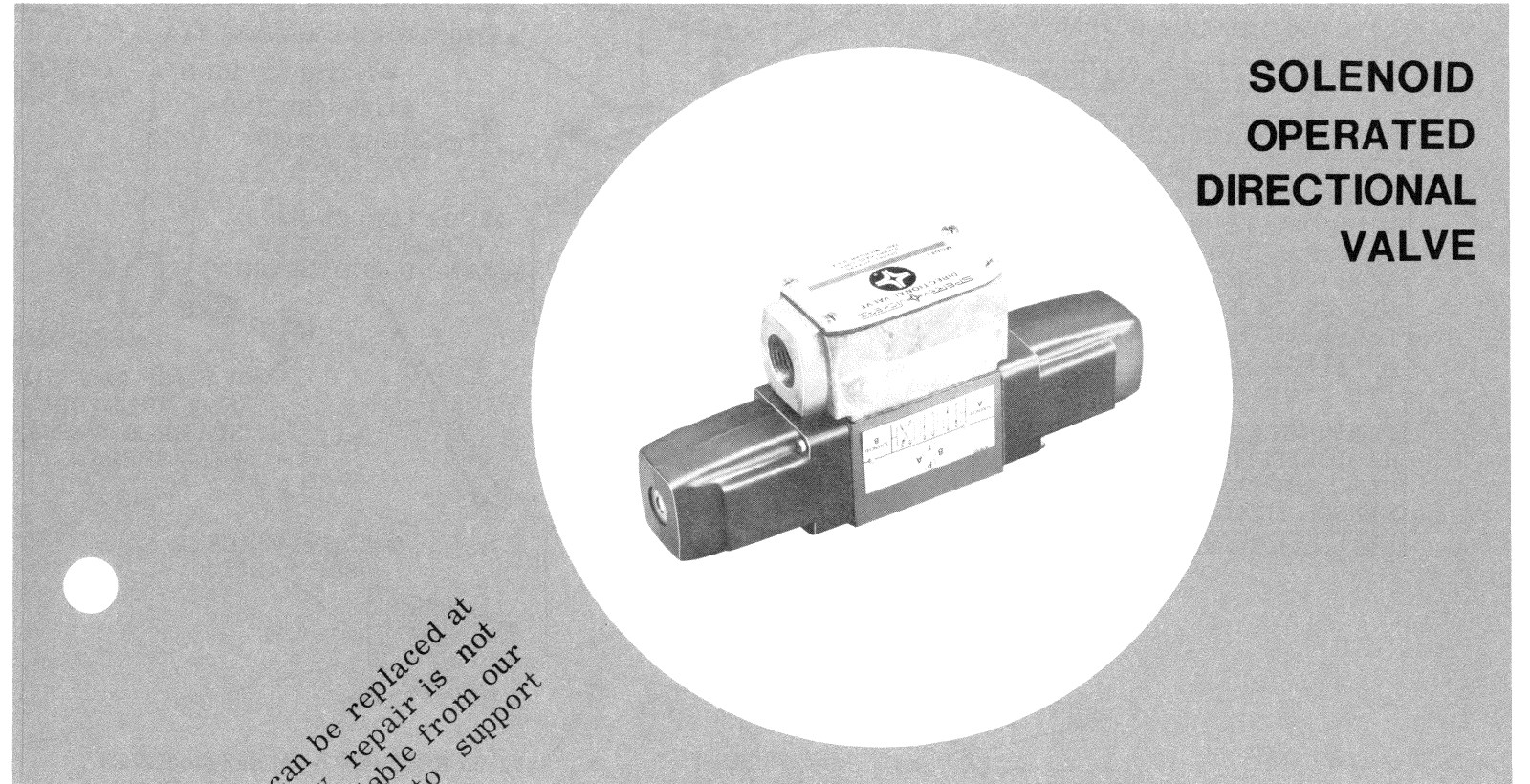
SOLENOID INDICATOR LIGHTS		
Δ INCLUDED IN SERVICE KIT	Δ LIGHT S/A	VOLTAGE RANGE
942385	751255	100/127V-AC
942386	751256	192/233V-AC
942490	751881	110/120V-DC



To insure sustained efficiency and maximum trouble-free life of this precision equipment, initial and continuous filtration of the fluid medium to 35 microns absolute or less is essential. (For information pertaining to Sperry Vickers economical filters, see bulletin 81-216.)

LITHO IN U. S. A.

SPERRY VICKERS



As this complete unit can be replaced at a nominal cost, factory repair is not practical. Kits are available from our Branch Warehouse system to support customer repair of this unit.

SERVICE PARTS INFORMATION

- DG4V-3-* A - *(*)-*-10 OFFSET
- DG4V-3-* B - *(*)-*-10 SPRING CENTERED
- DG4V-3-* C - *(*)-*-10 SPRING CENTERED
- DG4V-3-* N - *(*)-*-11 DETENTED

SPERRY VICKERS
TROY, MI. 48084

Revised 5-1-81

I-3529-S

