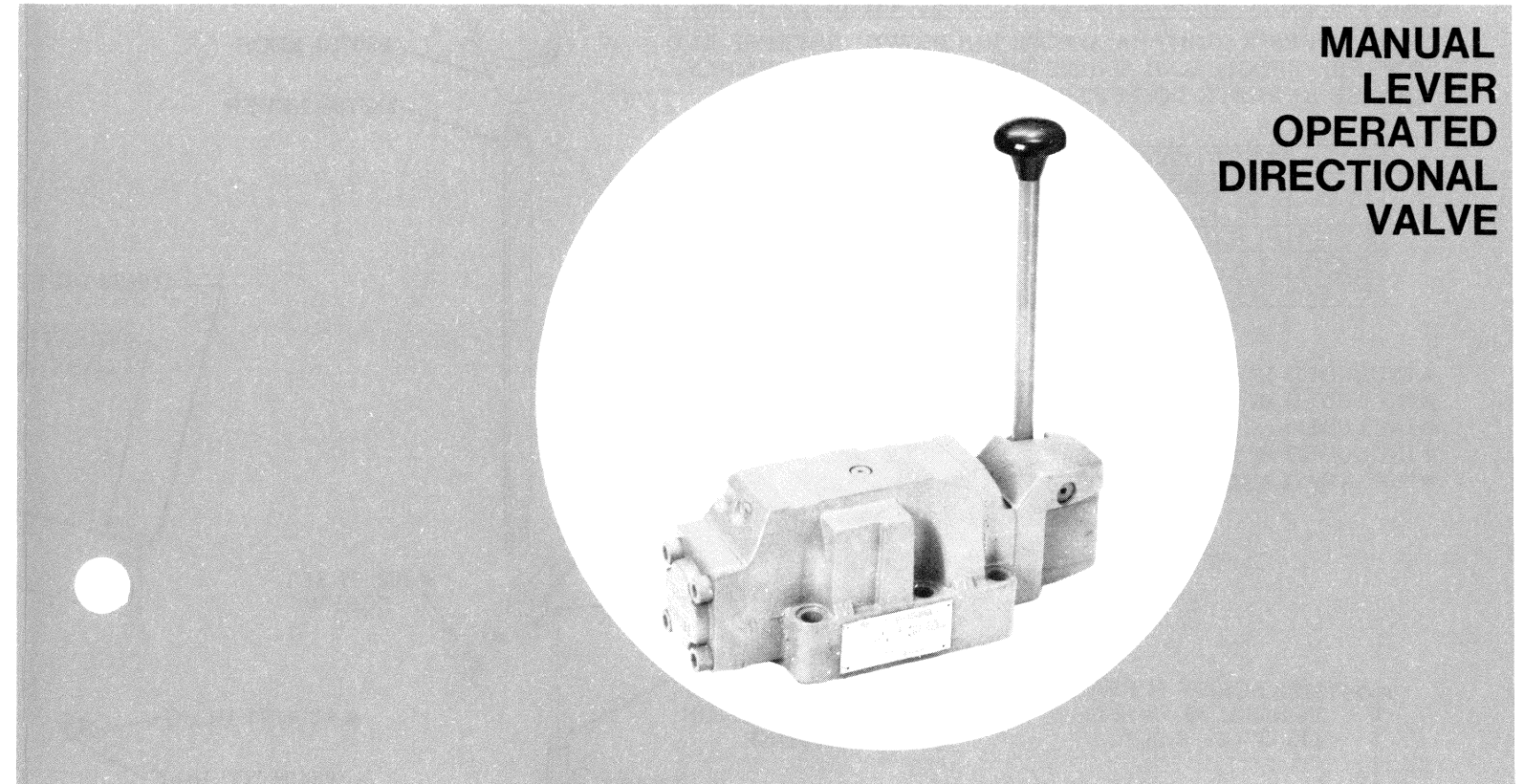
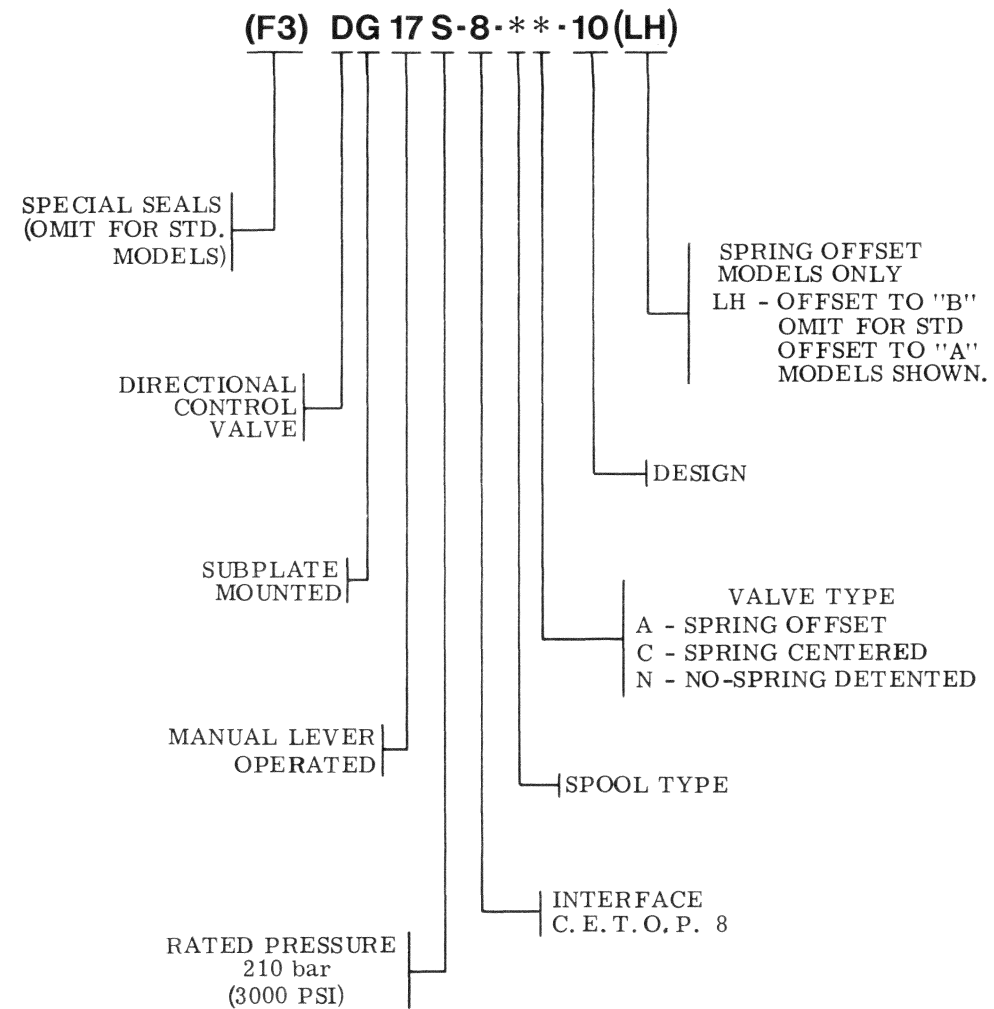


MODEL CODE BREAKDOWN



MANUAL LEVER OPERATED DIRECTIONAL VALVE

SERVICE PARTS INFORMATION

- DG17S-8-*A-10
- DG17S-8-*C-10
- DG17S-8-*N-10

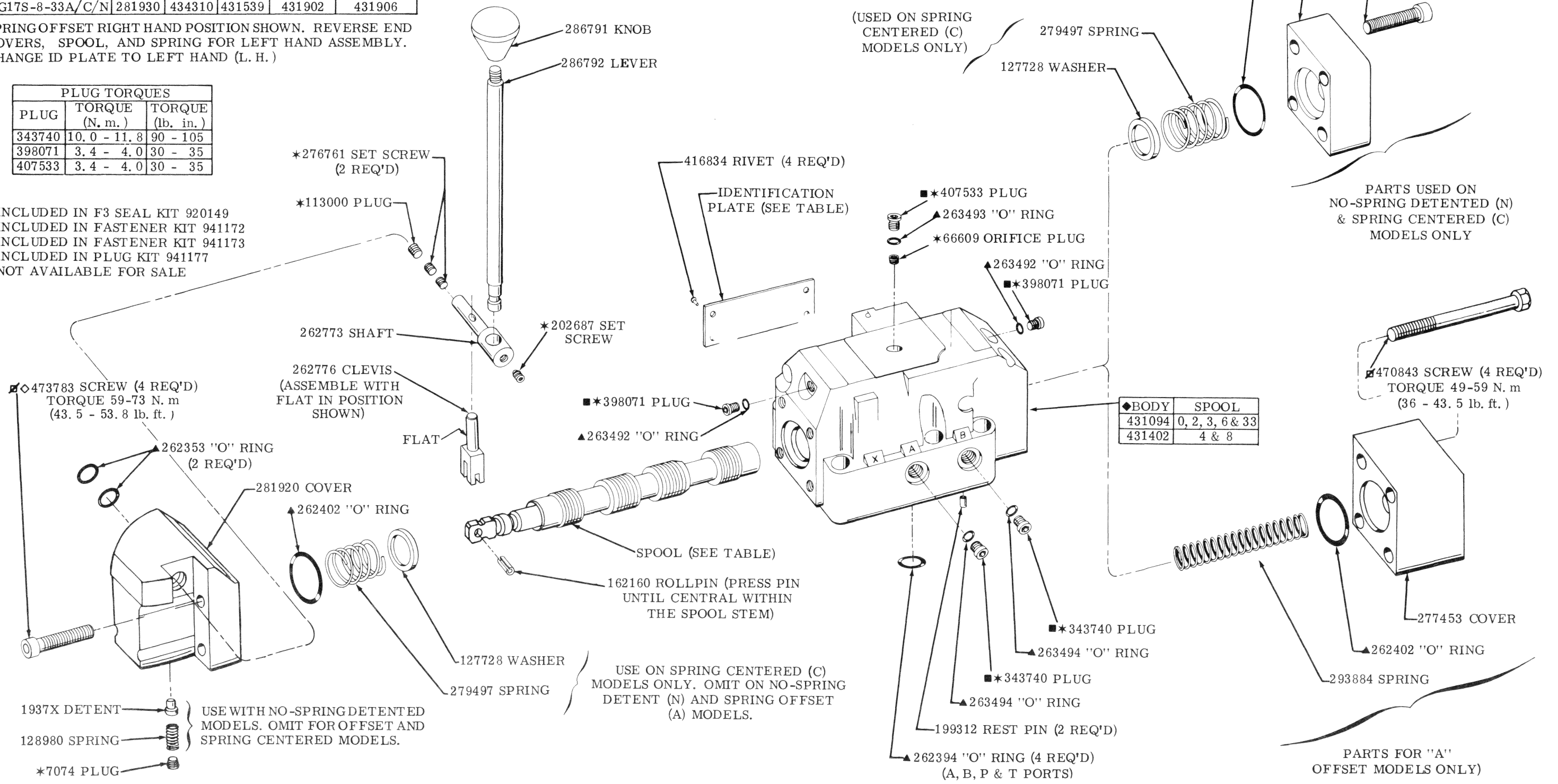
To insure sustained efficiency and maximum trouble-free life of this precision equipment, initial and continuous filtration of the fluid medium to 25 microns absolute or less is essential. (For information pertaining to Sperry Vickers economical 3 or 10 micron filters, see installation drawing 522140.)

MODEL	SPOOL	ID PLATE WITH CIRCUIT DIAGRAM			
		OFFSET (A)		SPRING CENT.(C)	NO-SPRING DETENT(N)
		L. H.	R. H.		
DG17S-8-0A/C/N	281922			431900	431903
DG17S-8-2A/C/N	281924	434310	431539	431540	431541
DG17S-8-3C/N	320915			431901	431904
DG17S-8-4C/N	281926			431549	431905
DG17S-8-6A/C/N	281927	434310	431539	431902	431906
DG17S-8-8C/N	281929			431459	431905
DG17S-8-33A/C/N	281930	434310	431539	431902	431906

SPRING OFFSET RIGHT HAND POSITION SHOWN. REVERSE END COVERS, SPOOL, AND SPRING FOR LEFT HAND ASSEMBLY. CHANGE ID PLATE TO LEFT HAND (L. H.)

PLUG TORQUES		
PLUG	TORQUE (N. m.)	TORQUE (lb. in.)
343740	10.0 - 11.8	90 - 105
398071	3.4 - 4.0	30 - 35
407533	3.4 - 4.0	30 - 35

- ▲ INCLUDED IN F3 SEAL KIT 920149
- ▣ INCLUDED IN FASTENER KIT 941172
- ◇ INCLUDED IN FASTENER KIT 941173
- * INCLUDED IN PLUG KIT 941177
- ◆ NOT AVAILABLE FOR SALE



NOTE
 - PARTS INCLUDED IN SERVICE KITS WILL NOT BE SOLD SEPARATELY
 - ALL THREADED FASTENERS ARE METRIC
 - END COVER SCREWS ARE METRIC GRADE 12. 9

USE ON SPRING CENTERED (C) MODELS ONLY. OMIT ON NO-SPRING DETENT (N) AND SPRING OFFSET (A) MODELS.

PARTS USED ON NO-SPRING DETENTED (N) & SPRING CENTERED (C) MODELS ONLY

PARTS FOR "A" OFFSET MODELS ONLY