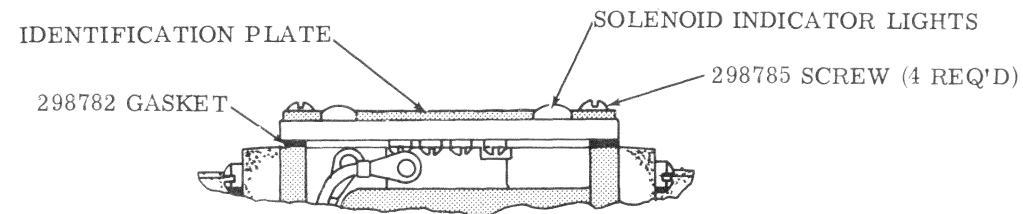
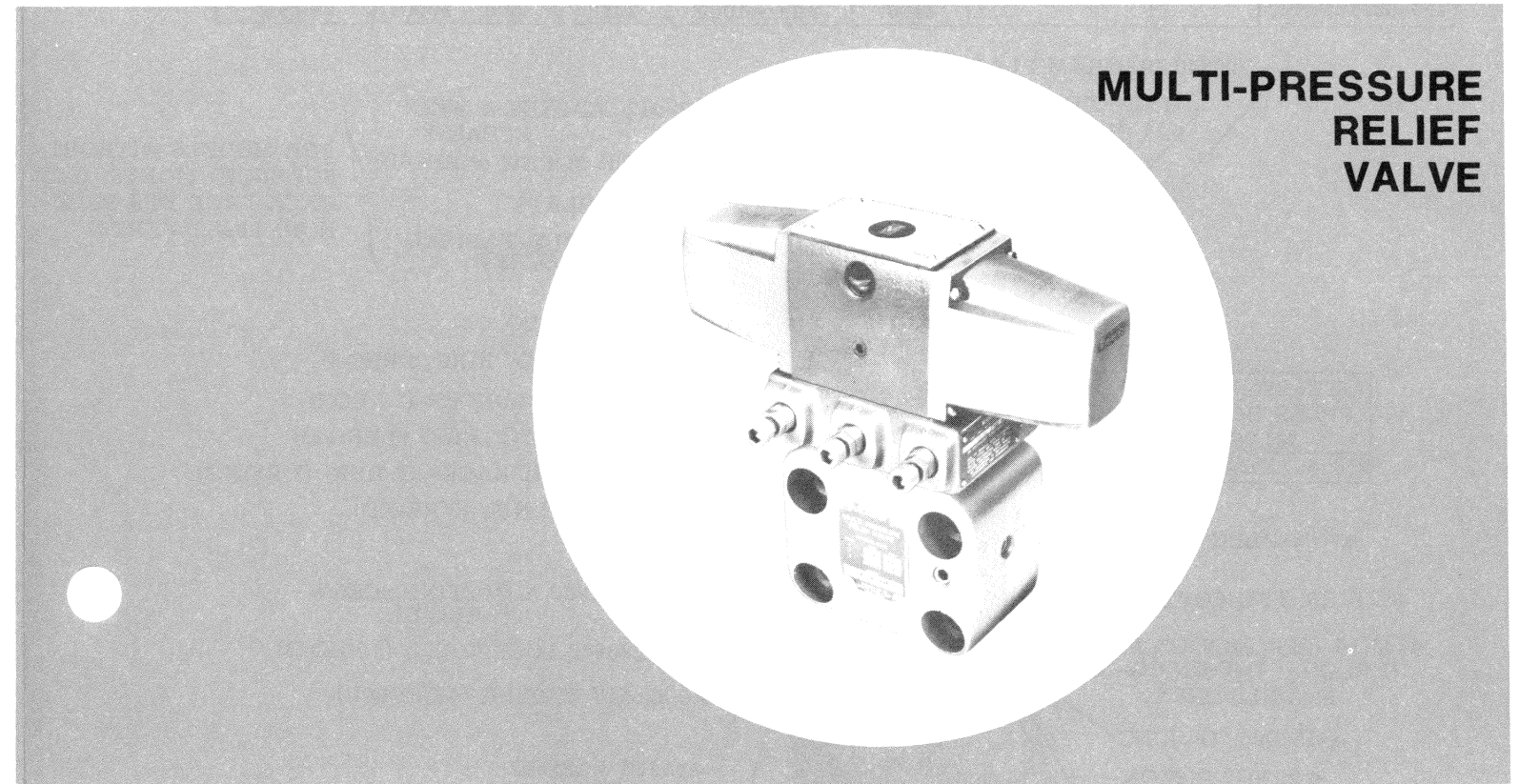
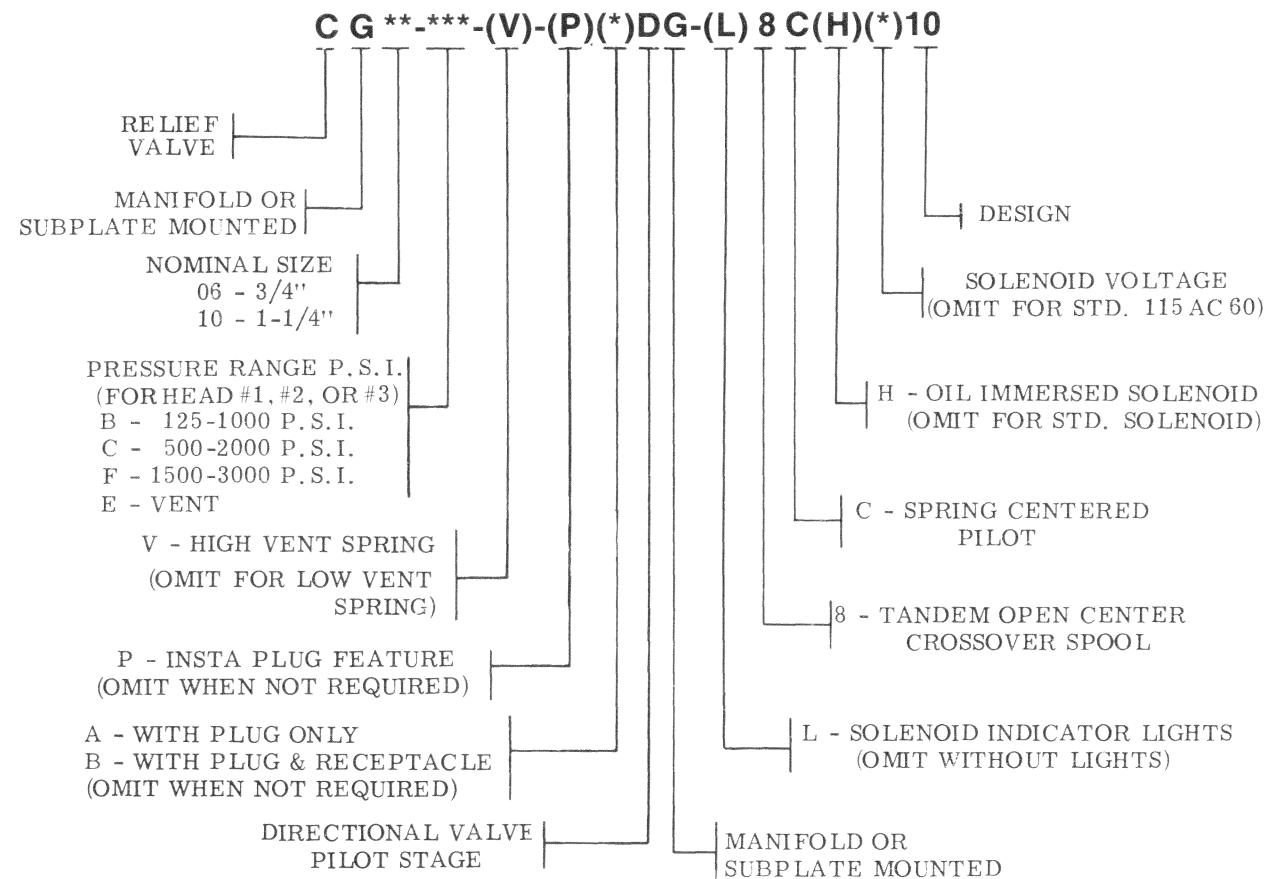


FOR MODELS WITH
SOLENOID INDICATOR LIGHTS



SOLENOID INDICATOR LIGHT KIT (INCLUDES ALL PARTS IDENTIFIED)	
VOLTAGE RANGE	KIT
100 thru 125	941615 - DOUBLE

MODEL CODE BREAKDOWN



**MULTI-PRESSURE
RELIEF
VALVE**

SERVICE PARTS INFORMATION

CG-06-*-(V)-(P)(*)DG(L)-8C-(H)-*-10**
CG-10-*-(V)-(P)(*)DG(L)-8C-(H)-*-10**

To insure sustained efficiency and maximum trouble-free life of this precision equipment, initial and continuous filtration of the fluid medium to 25 microns absolute or less is essential. (For information pertaining to Sperry Vickers economical 3 or 10 micron filters, see installation drawing 522140.)

Litho in U. S. A.

SPERRY VICKERS
TROY, MI. 48084

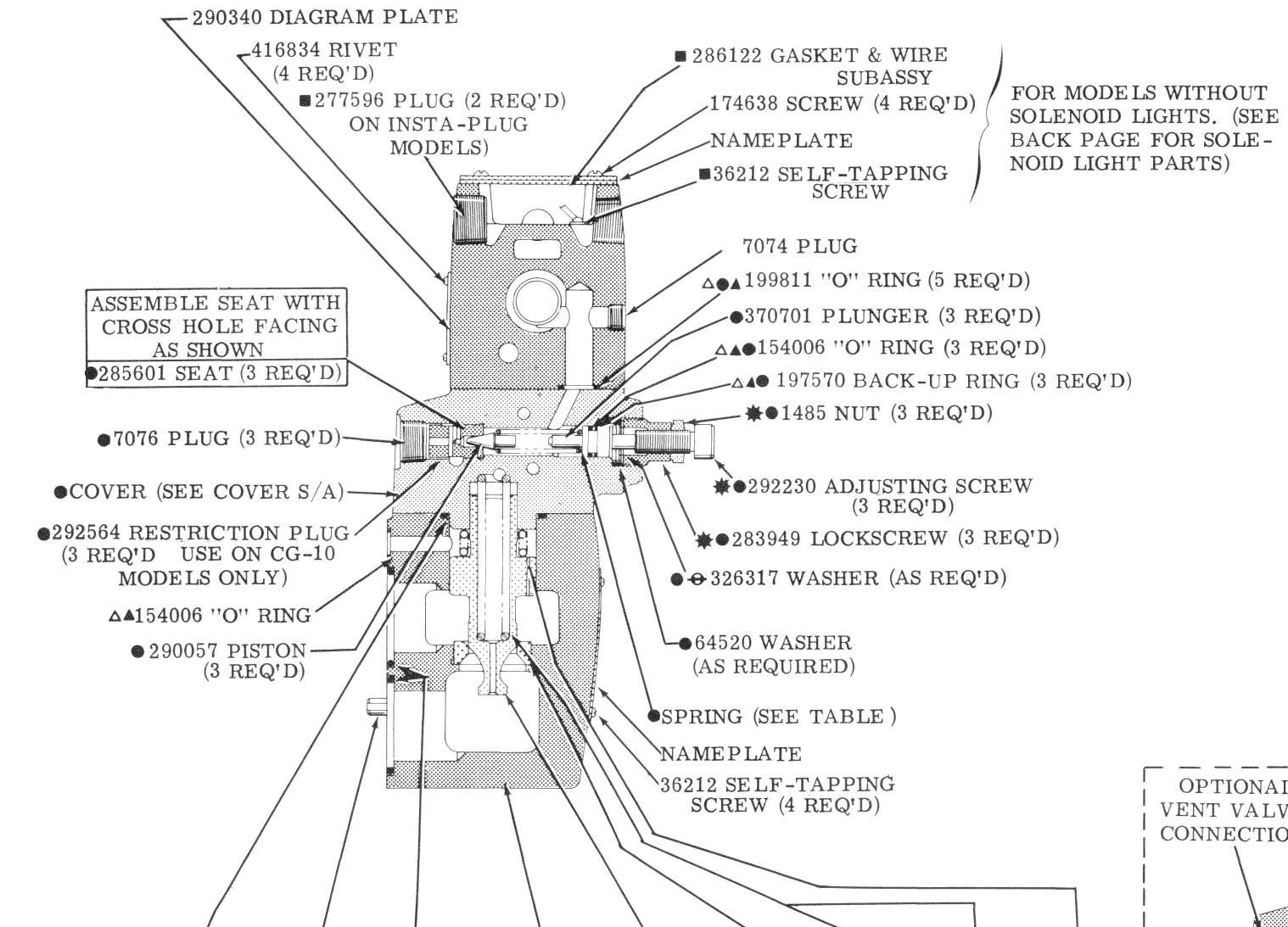
Revised 11-1-80

I-3323-S

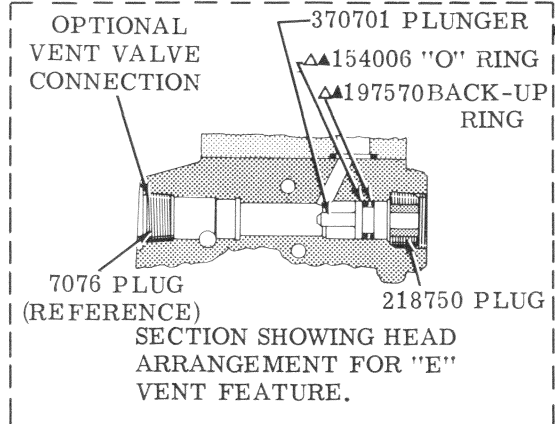
MODEL	HEAD #1		HEAD #2		HEAD #3		●CG-06 COVER S/A
	SPRING	PRESSURE RANGE P. S. I.	SPRING	PRESSURE RANGE P. S. I.	SPRING	PRESSURE RANGE P. S. I.	
CG-06/10-CBF			2280	125 - 1000	2281	1500 - 3000	942198
CG-06/10-CEB	2282	500 - 2000	VENT	---	2280	125 - 1000	---
CG-06/10-CBC			2280	125 - 1000	2282	500 - 2000	942202

WARNING
DO NOT USE OTHER THAN A DG4S4-018C-* -50 DIRECTIONAL VALVE AS THE PILOT FOR THIS RELIEF VALVE. USE OF A DIFFERENT PILOT CAN BLOCK THE RELIEF VALVE CAUSING EXCESSIVE SYSTEM PRESSURE.

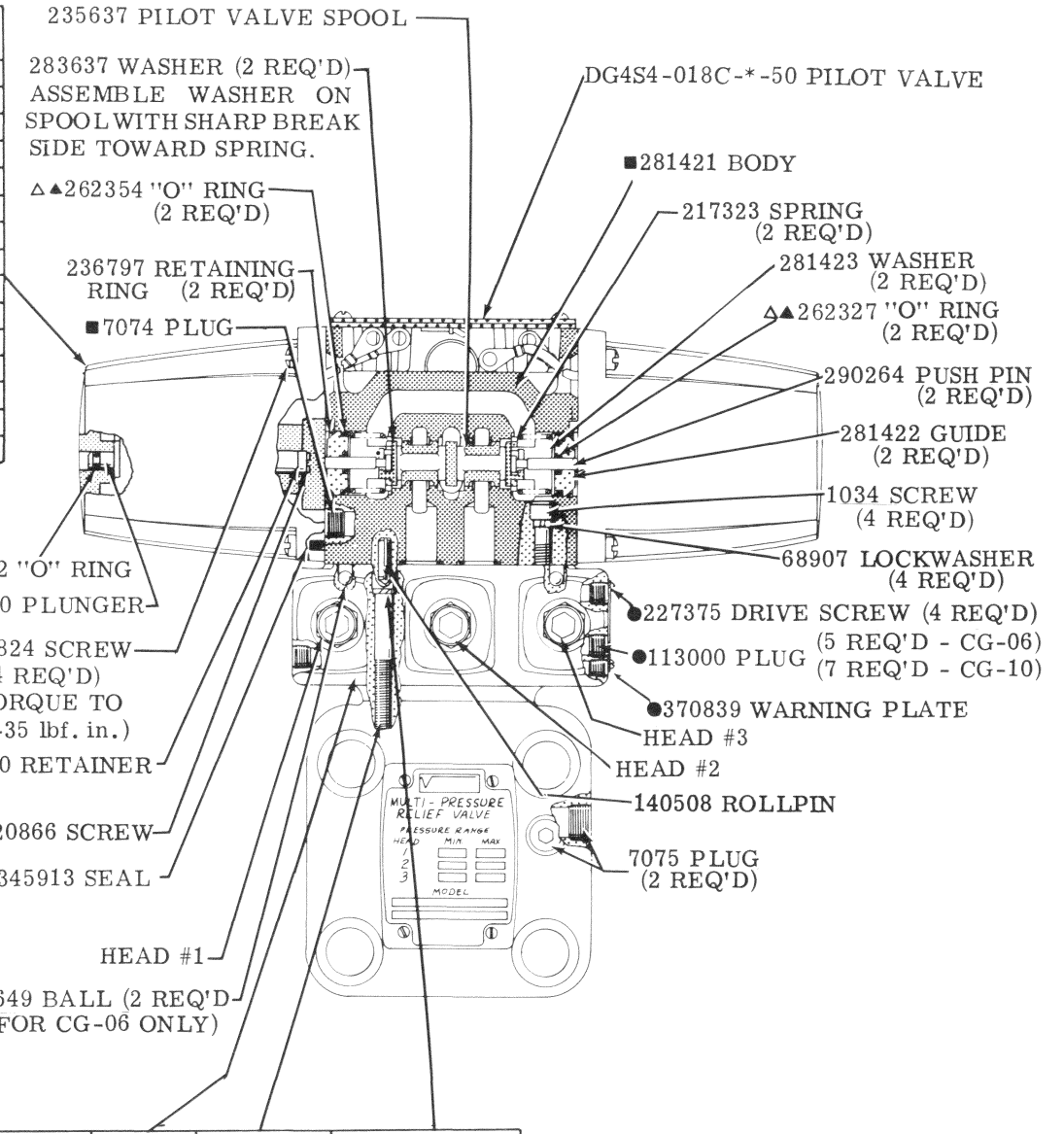
VOLTAGE	SOLENOID S/A	COIL
24 AC 60	320225	320226
115 AC 60	281291	316011
120 AC 60	319123	319124
208 AC 60	320946	320947
220 AC 60	320309	320310
230 AC 60	281292	298721
460 AC 60	281293	298722
42 AC 50	320216	320217
95 AC 50	320312	320318
115 AC 50	295014	316130
120 AC 50	320948	320949
220 AC 50	319858	751919
230 AC 50	295016	751920
460 AC 50	320920	320921
220 AC 25	320944	320945



MODEL	"O" RING	ROLLPIN	"O" RING (2 REQ'D)	BODY	HYDRO-CONE	SEAT	LO-VENT SPRING	HI-VENT SPRING	HI-VENT SPRING
CG-06	▲199813	160571	▲154020	349177	343154	343153	2077	---	184458
CG-10	▲170160		▲154024	283958	283952	283954	291822	291821	---



INCLUDED IN ONE SOLENOID SUBASSY (2 SUBASSY'S REQ'D)



MODEL	COVER	SCREW (4 REQ'D)	LOCKWASHER (4 REQ'D)
CG-06	369670	1036	68907
CG-10	370668	1076	68909

▲CG-06-*** INCLUDED IN 919684 SEAL KIT
▲CG-10-*** INCLUDED IN 919685 SEAL KIT

*NOTE
COAT ADJUSTING SCREW 292230, LOCK SCREW 283949, AND LOCK NUT 1485 WITH OIL PRIOR TO ASSEMBLY.

OIL IMMERSSED SOLENOID INFORMATION IS SHOWN ON PARTS DRAWING I-3498-S

■ INCLUDED IN 941853 BODY S/A

● INCLUDED IN COVER SUBASSY

INSTA-PLUG CONNECTORS FOR THE DG4S4 PILOT STAGE ARE SHOWN ON PARTS DRAWING I-3487-S.

● THIS PART USED AT FINAL TEST TO OBTAIN CORRECT PRESSURE RANGE