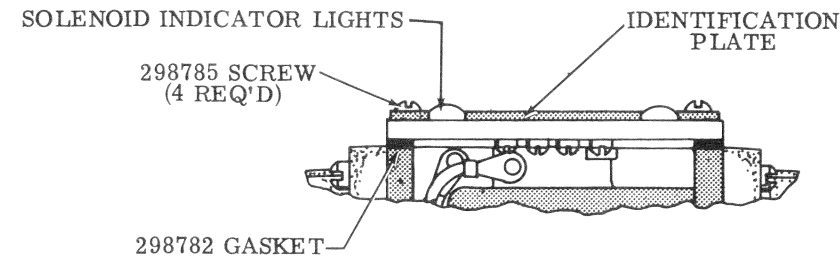
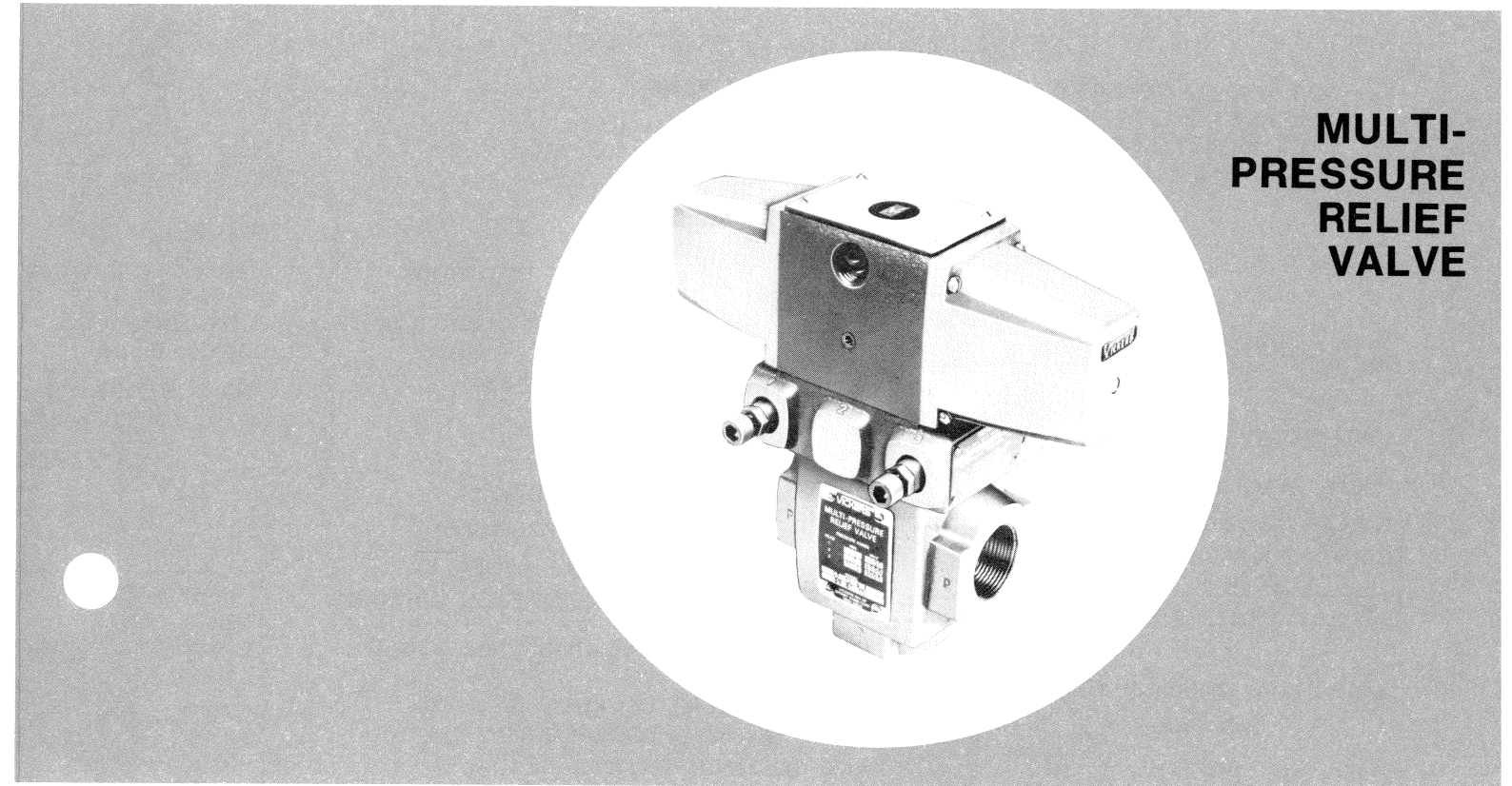
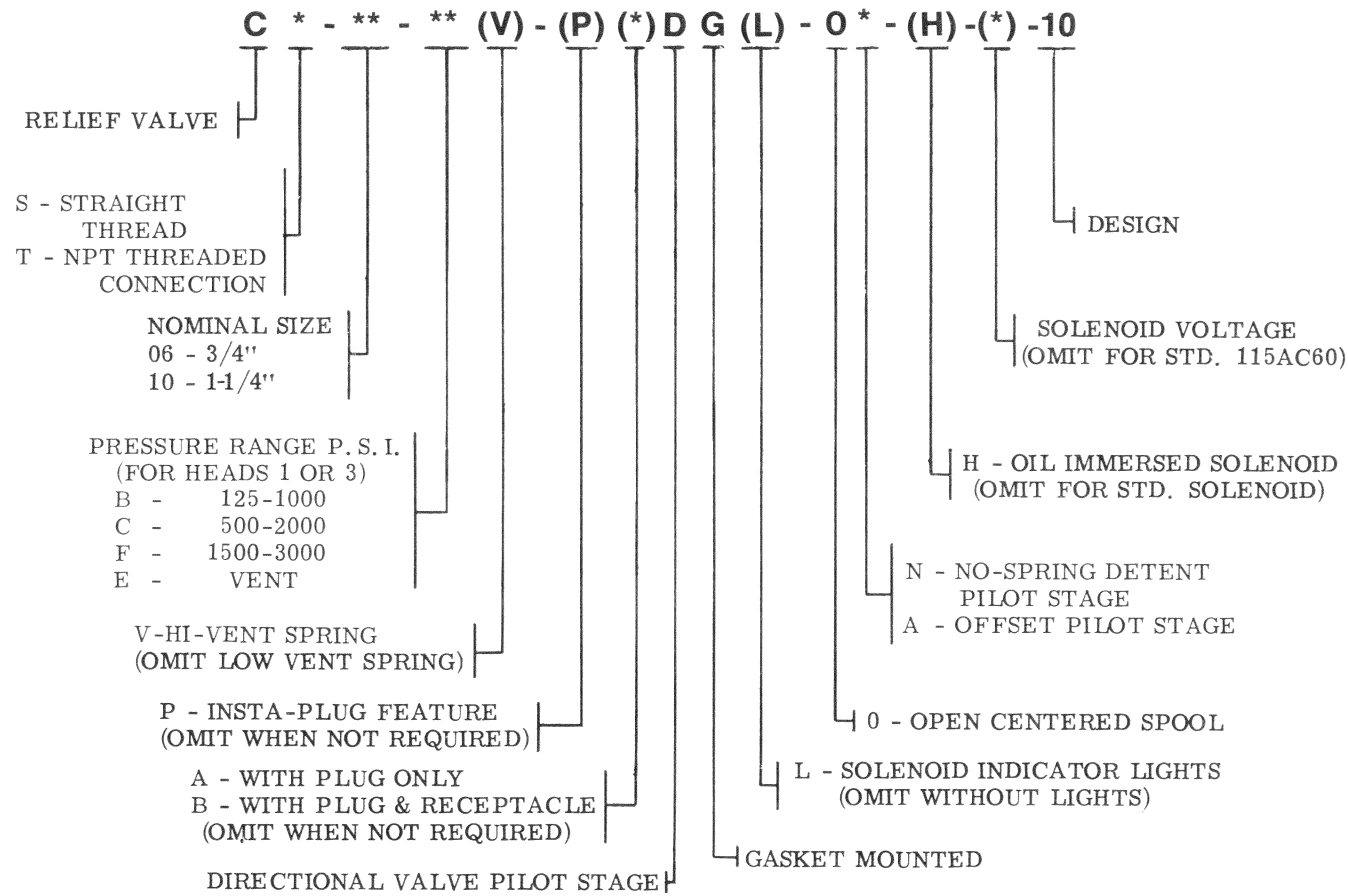


FOR MODELS WITH SOLENOID INDICATOR LIGHTS



SOLENOID INDICATOR LIGHT KIT (INCLUDES ALL PARTS IDENTIFIED)	
VOLTAGE RANGE	KIT
100 thru 125	941615

MODEL CODE BREAKDOWN



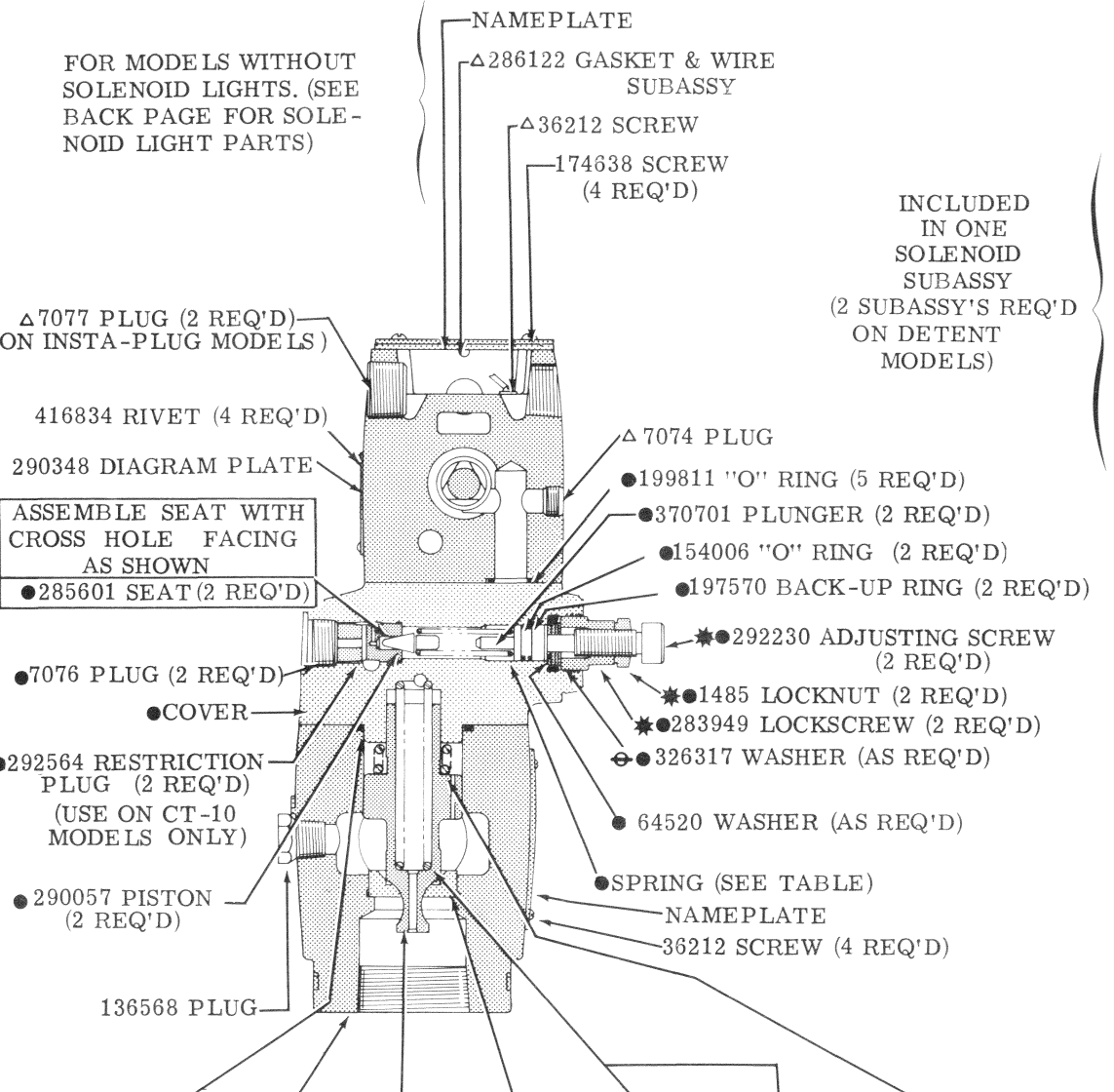
MULTI-PRESSURE RELIEF VALVE

SERVICE PARTS INFORMATION

CS/CT-06 - ** - (V) - (P) (*) DG(L) - 0 * - (H) - * - 10 - *
CS/CT-10 - ** - (V) - (P) (*) DG(L) - 0 * - (H) - * - 10 - *

To insure sustained efficiency and maximum trouble-free life of this precision equipment, initial and continuous filtration of the fluid medium to 25 microns absolute or less is essential. (For information pertaining to Sperry Vickers economical 3 or 10 micron filters, see installation drawing 522140.)

MODEL	HEAD #1		HEAD #3		●CT-06 COVER S/A	●CT-10 COVER S/A
	SPRING	PRESSURE RANGE P. S. I.	SPRING	PRESSURE RANGE P. S. I.		
CT-06/10-BF	2280	125 - 1000	2281	1500 - 3000	-----	-----
CT-06/10-CF	2282	500 - 2000	2282	500 - 2000	-----	-----
CT-06/10-BC	2280	125 - 1000	2282	500 - 2000	942155	942156



MODEL	"O" RING	BODY	HYDRO-CONE	SEAT	LO-VENT SPRING	HI-VENT SPRING	HI-VENT SPRING
CT-06	199813	349180	343154	343153	2077	-----	184458
CT-10	170160	283959	283952	283954	291822	291821	-----

USE EITHER A LOW-VENT OR HI-VENT SPRING AS SHOWN. DO NOT USE BOTH.

⊖ THIS PART USED AT FINAL TEST TO OBTAIN CORRECT PRESSURE RANGE

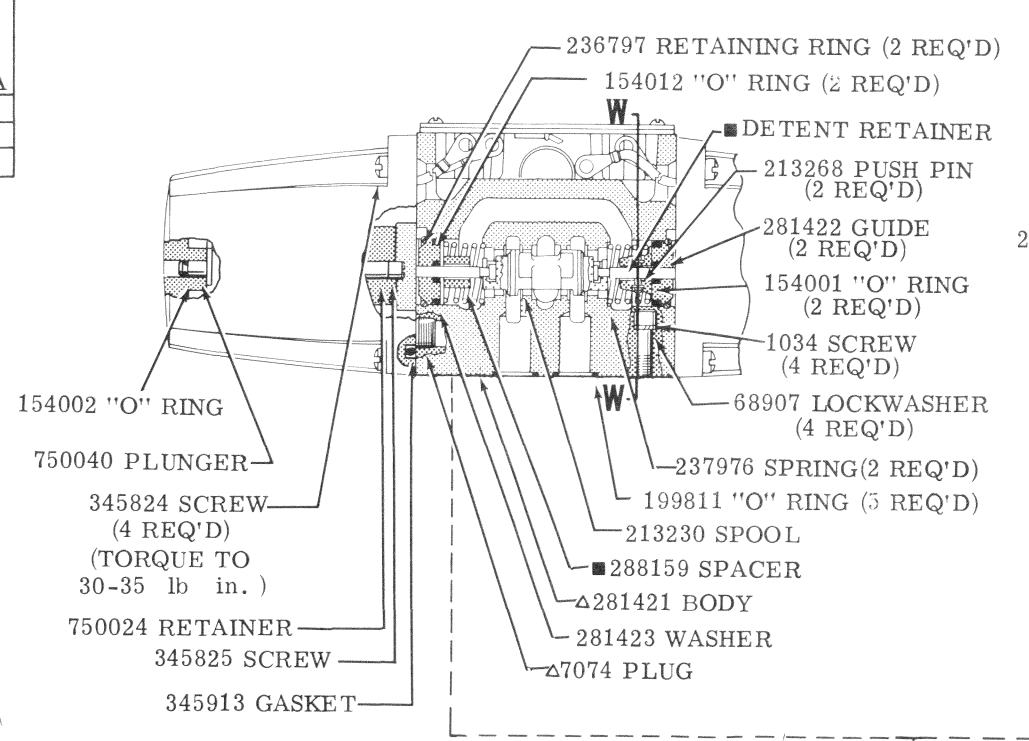
INSTA-PLUG CONNECTORS FOR THE DG4S4 PILOT STAGE ARE SHOWN ON PARTS DRAWING I-3487-S

△ INCLUDED IN 941853 BODY SUBASSY

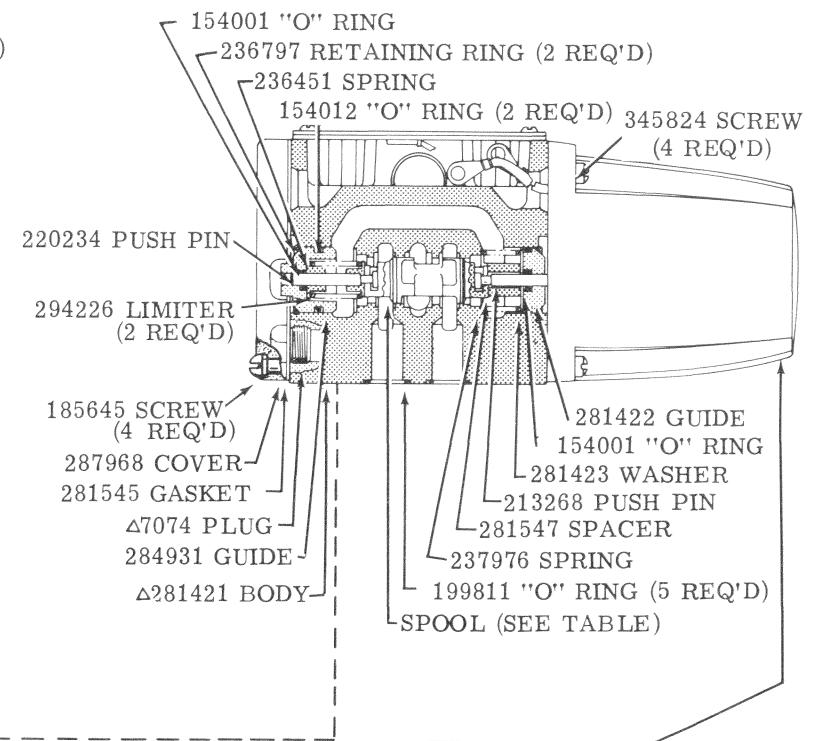
*NOTE
COAT ADJUSTING SCREW 292230, LOCK SCREW 283949, AND LOCK NUT 1485 WITH OIL PRIOR TO ASSEMBLY.

OIL IMMERSSED SOLENOID INFORMATION IS SHOWN ON PARTS DRAWING I-3498 -S

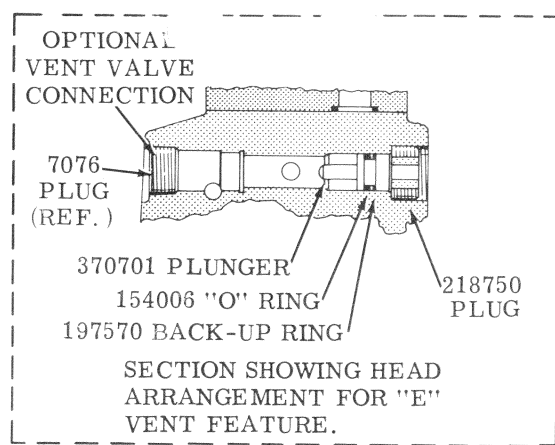
DG4S4-010N-* -51 PILOT VALVE



DG4S4-010A-* -50 PILOT VALVE

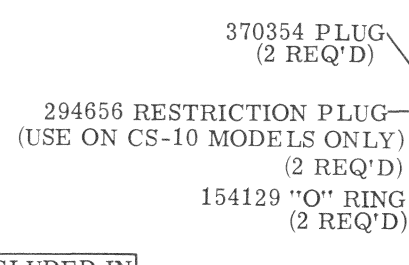
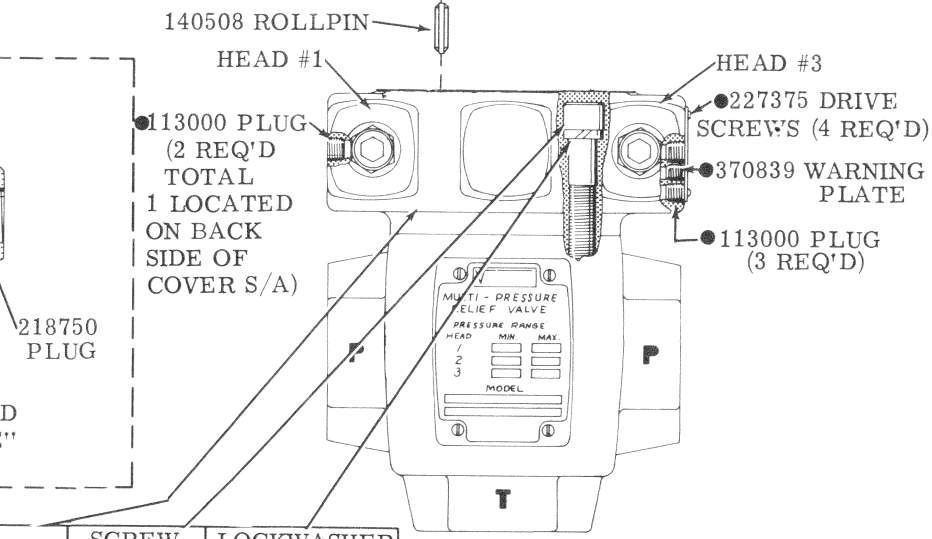


VOLTAGE	SOLENOID S/A	COIL
24 AC 60	320225	320226
115 AC 60	281291	316011
120 AC 60	319123	319124
208 AC 60	320946	320947
220 AC 60	320309	320310
230 AC 60	281292	298721
42 AC 50	320216	320217
95 AC 50	320312	320313
115 AC 50	295014	316130
120 AC 50	320948	320949
220 AC 50	319858	319859
230 AC 50	295016	298724
460 AC 50	320920	320921
220 AC 25	320944	320945



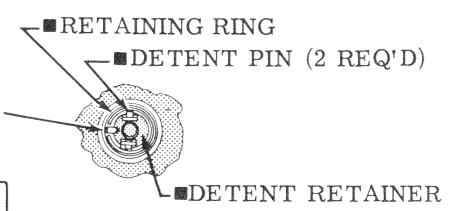
MODEL	COVER	SCREW (4 REQ'D)	LOCKWASHER (4 REQ'D)
CT-06	370665	1036	68907
CT-10	370670	1076	68909

MODEL	COVER	BODY
CS-06	370666	349187
CS-10	370671	294380



● INCLUDED IN COVER SUBASSY

■ INCLUDED IN 942132 DETENT S/A



SECTION W-W