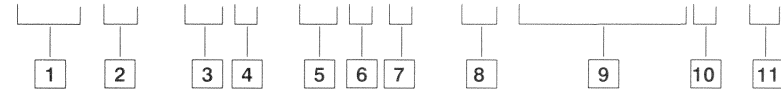


Model Code

PVQ 1* - ** * - ** * * - 10 C ** *** ** * - **



1 PVQ Series

P – Inline piston pump
V – Variable volume
Q – Quiet series

2 Displacement

(CC/Rev & Pressure ratings)

10 – 10 CC/Rev (.64 CIR)
210 bar (3000 psi)
13 – 13 CC/Rev (.84 CIR)
140 bar (2000 psi)

3 Mounting flange

A2 – SAE “A” 2-bolt
MA – ISO 3019/2 “A” 2-bolt (available with “N” driveshaft only)

4 Rotation

(viewed from shaft end)

R – Right hand (CW), (standard)
L – Left hand (CCW), (optional)

5 Ports

(type and location)

SE – O-Ring boss rear port,
1.0625 inch (Inlet & Outlet) (standard)
SS – O-Ring boss side port, 1.3125
inch (Inlet & Outlet) (optional)

6 Shafts

(input)

1 – Straight keyed SAE “A” modified
.75 inch Dia. x 1.75 inch long
3 – Splined SAE “A” modified 9T, 16/32
DP major Dia. fit
N – ISO 3019/2 short straight keyed
(available with “MA” mounting only)

7 Seals

S – Buna N (standard)
F – Fluorocarbon, (optional)

8 Pump design number

10 – First design

9 Control type

C** – Pressure compensator, PVQ10: Std.
model is C21, indicating factory setting of
210 bar (3000 psi). Range is 02–21 in tens
of bar (350–3000 psi)

PVQ13: Std. model is C14, indicating factory
setting of 140 bar (2000 psi). Range is
02–14 in tens of bar (350–2000 psi)

CM** – Low pressure compensator, Std.
model is CM7, indicating factory setting of
70 bar (1000 psi). Range is 02–10 in tens of
bar (350–1500 psi)

C**V**B – Pressure compensator C**, as
above, with load sensing. Std. load sensing
setting is 11 bar (160 psi). Range 10–17
bar (150–250 psi), with bleed down orifice.
Example: C21V11B indicates PVQ10 compen-
sator with 210 bar pressure setting and
11 bar load sense differential.

C**V**P – Pressure compensator with
load sensing as C**V**B above, but with
bleed down orifice plugged.

C**VC**B – Pressure compensator with
load sensing. Compensator same as C**
above. Std. load sensing setting is 24 bar
(350 psi). Range 17–31 bar (250–450 psi),
with bleed down orifice

C**VC**P – Pressure compensator with
load sensing. Same as C**VC**B above,
but with bleed down orifice plugged.

CG – Pressure compensator modified
for hydraulic remote control.

CD** – Electric dual range compensator.
PVQ10: Std. model is CD2110, indicating
dual pressure settings of 210 and 100 bar,
adjustment ranges are 20–210 bar (high)
and 20–100 bar (low). PVQ13: Std. model
is CD1407, indicating settings of 140 and 70
bar, adjustment ranges are 20–140 bar
(high) and 20–100 bar (low).

10 Control option

Blank – Without adjustable Max. displace-
ment stop (standard)

D – Max. adjustable displacement stop
(optional)

11 Control design

11 – For C** & CM**

11 – For C**D & CM**D

12 – For C**V(C)**B & C**V(C)**P

20 – CD**** & CG

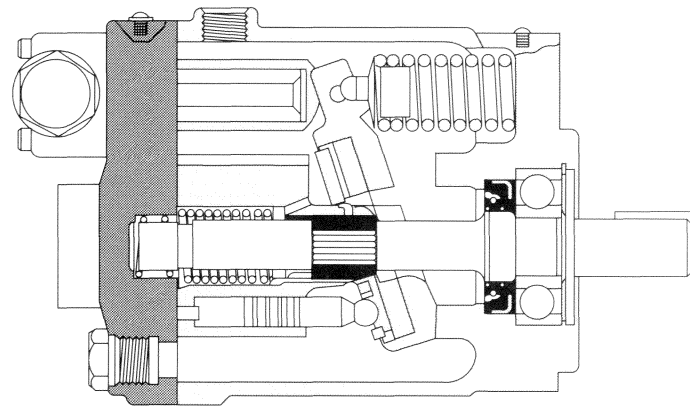
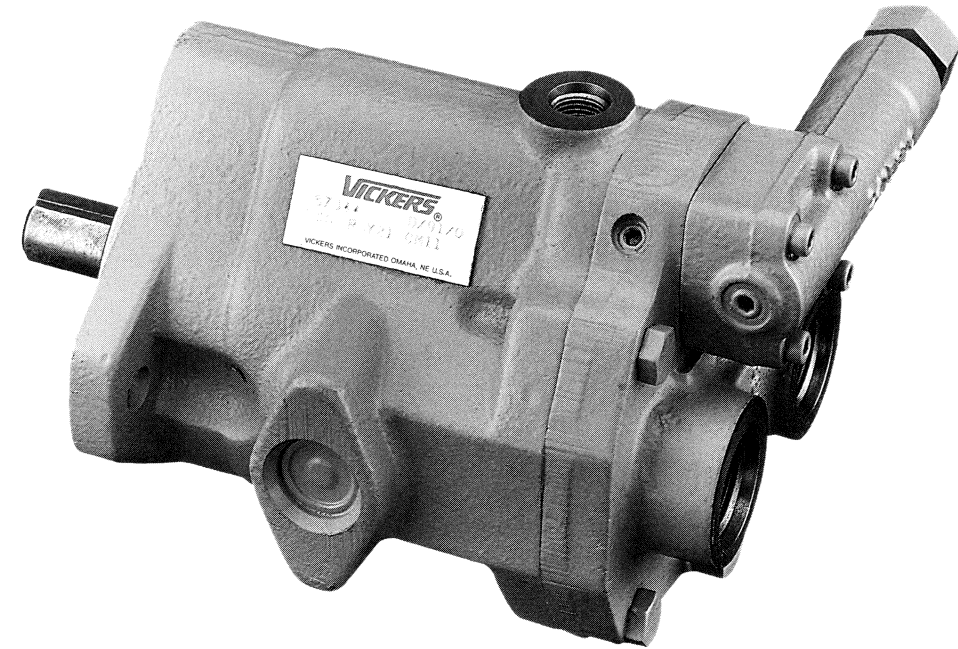
Service Data

VICKERS

Low Noise Industrial Piston Pump

PVQ 10–A2/MA * *** – ** * * – 10 C** *** ** * – 11/12/20

PVQ 13–A2/MA * *** – ** * * – 10 C** *** ** * – 11/12/20



Typical sectional view

Vickers, Incorporated
5445 Corporate Drive
P. O. Box 302
Troy, Michigan 48007–0302
U.S.A.



CAUTION

Model PVQ13C compensator
sure adjustment shall not exceed
2000 psi.

Model	●Comp. kit	●Comp. Spring	●Load Sense Spring
PVQ**C	942158	239371	—
PVQ**CM	942159	265693	—
PVQ**CG	942480	239371	—
PVQ**CMG	941353	265693	—
PVQ**C**V(C)11B	02-142729	239371	581073
PVQ**C**V(C)11P	02-142728	239371	581073
PVQ**C**V(C)24B	02-142730	239371	581072
PVQ**C**V(C)24P	02-142727	239371	581072
PVQ**CD****	(Refer to service parts information I-3255-S)		

NOTE

C, CM Compensator shown for right hand rotation. Rotate 180° for left hand shaft rotation and connect to left hand valve block S/A.

9 NOTE

See model code for pressure range settings of individual compensator kits.

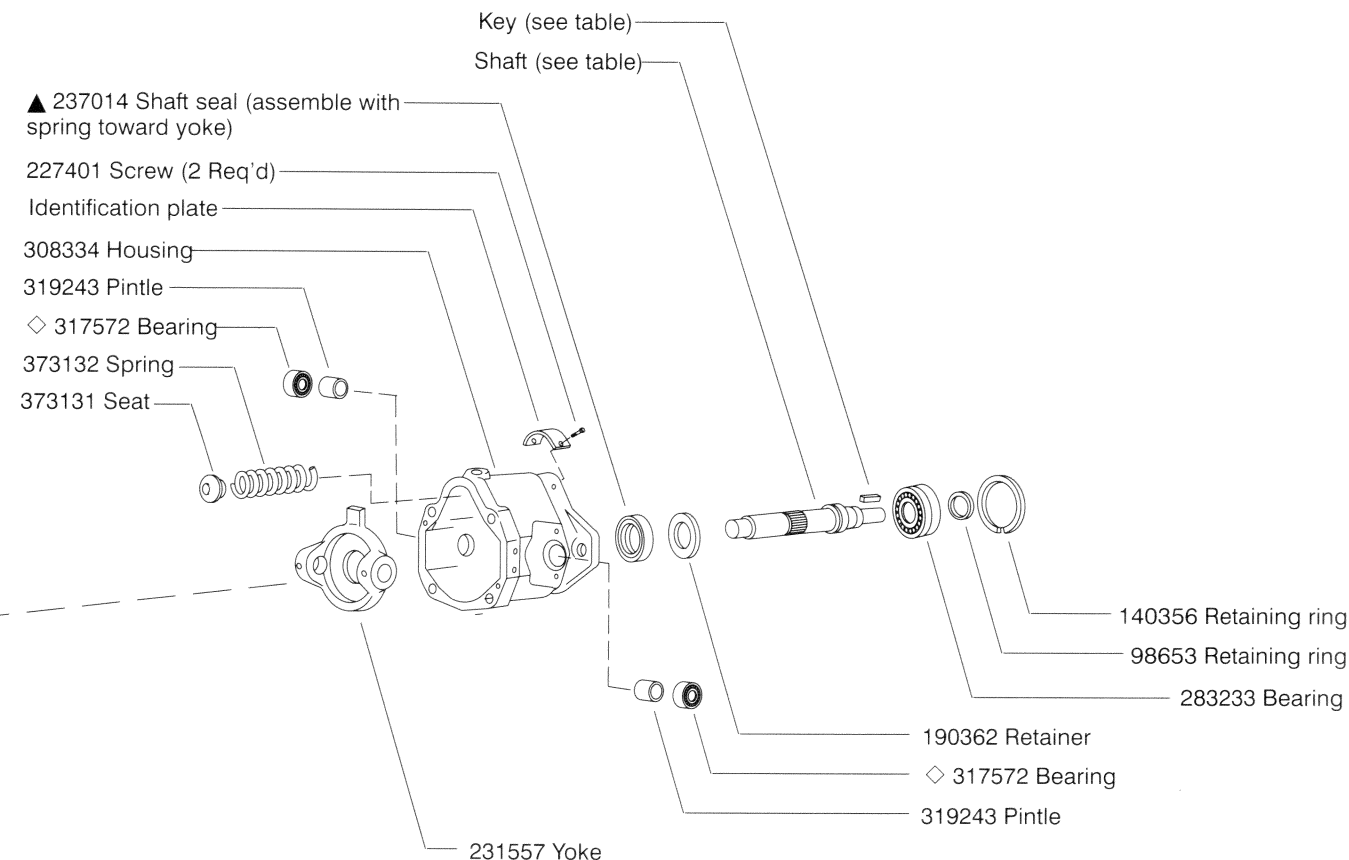
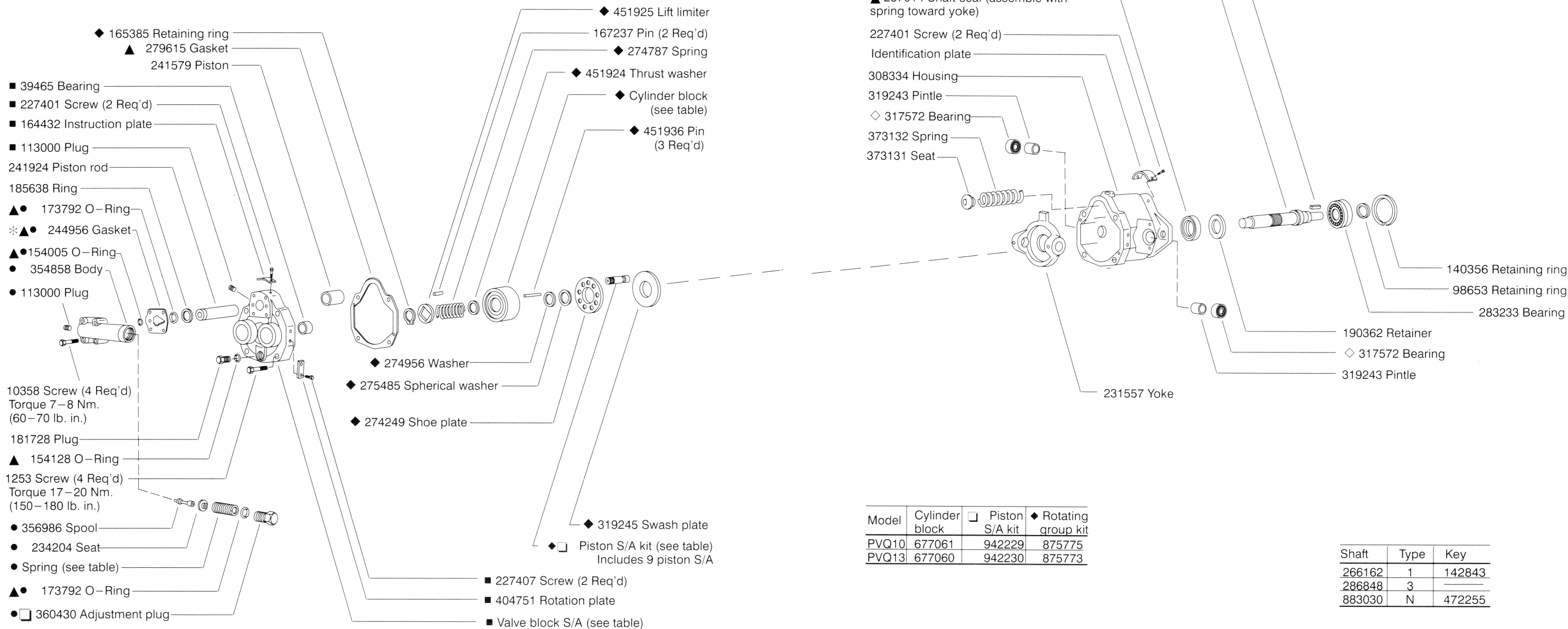
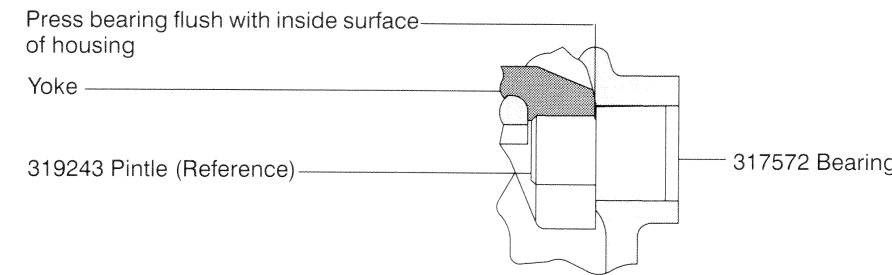
◇ PINTLE BEARING ASSEMBLY NOTE

The bearing O.D. surface and mating surface in the housing must be clean. Apply sealing compound (Loctite A (10-1) or equivalent) to the bearing O.D. and press in place.



CAUTION

Do not allow sealing compound to contact the bearing needles.



Model	Cylinder block	□ Piston S/A kit	◆ Rotating group kit
PVQ10	677061	942229	875775
PVQ13	677060	942230	875773

Shaft	Type	Key
266162	1	142843
286848	3	—
883030	N	472255

CAUTION



* Position gasket with small end of teardrop hole pointing in direction of compensator adjusting plug

NOTE

For satisfactory service life of these components in industrial applications, use full flow filtration to provide fluid which meets ISO cleanliness code 16/13 or cleaner. OFF, OFR, and OFRS series filters are recommended.

- ▲ Standard seal kit 919191 F3 equivalent seal kit 919308
- Compensator kit (see table)
- Valve block S/A (see table)
- ◆ Rotating group kit (see table)
- Piston S/A kit (see table)

Valve block S/A	Right hand	Left hand
Rear ports	02-142930	02-142931
Side ports	02-142932	02-142933