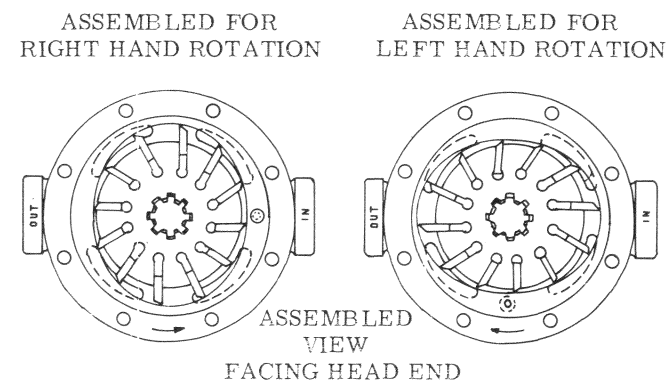
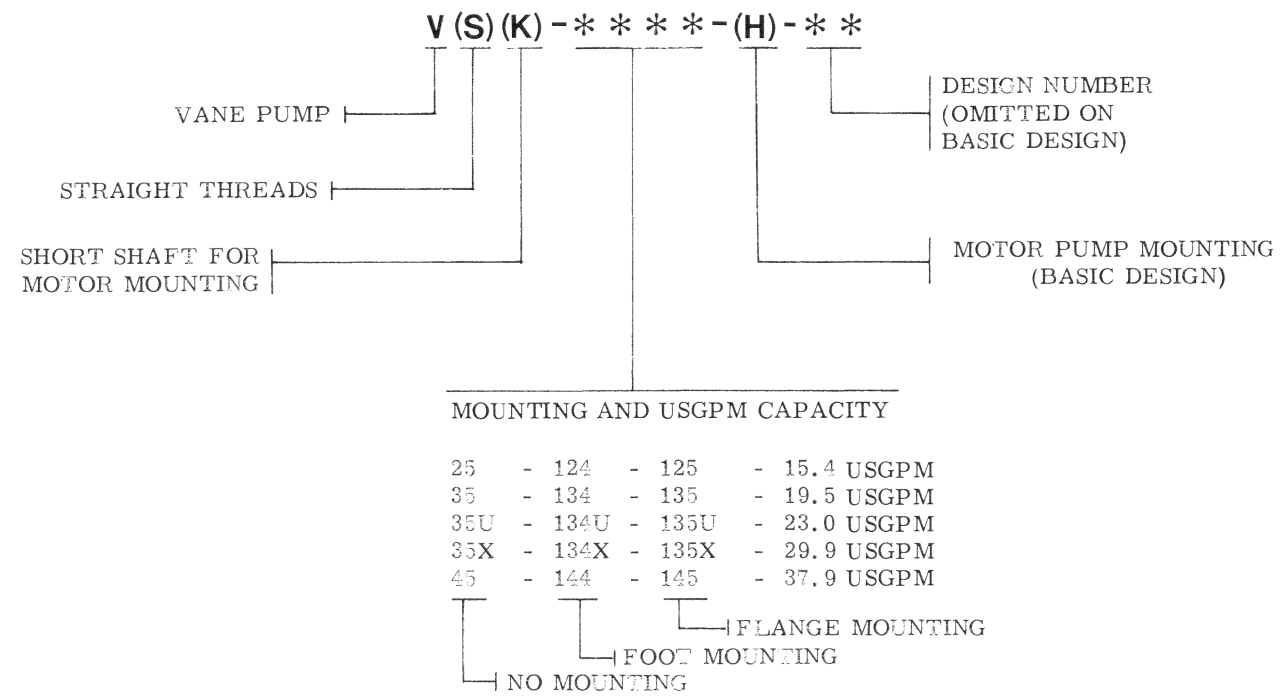


MODEL CODE BREAKDOWN

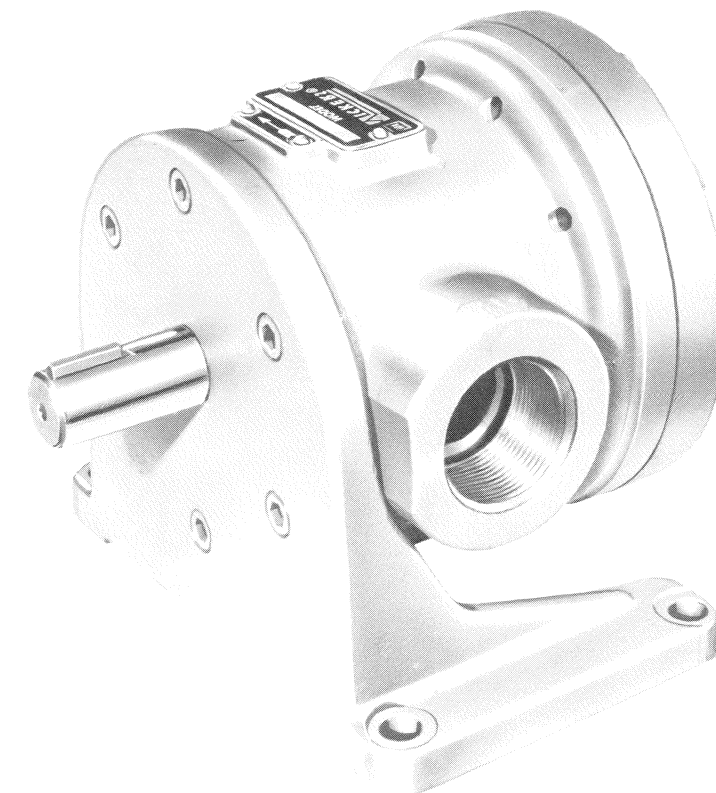


Assembly of the rotor and vanes is determined by the direction of the pump shaft rotation. Vanes must be assembled so that the small beveled edges are trailing as shown. Rotation is determined by viewing pump from shaft end. Clockwise rotation of the shaft for right hand. Left hand rotation is counterclockwise.

For satisfactory service life of these components, use full flow filtration to provide fluid which meets ISO cleanliness code 18/15 or cleaner. Selections from Vickers OFF, OFR, and OFRS series are recommended.

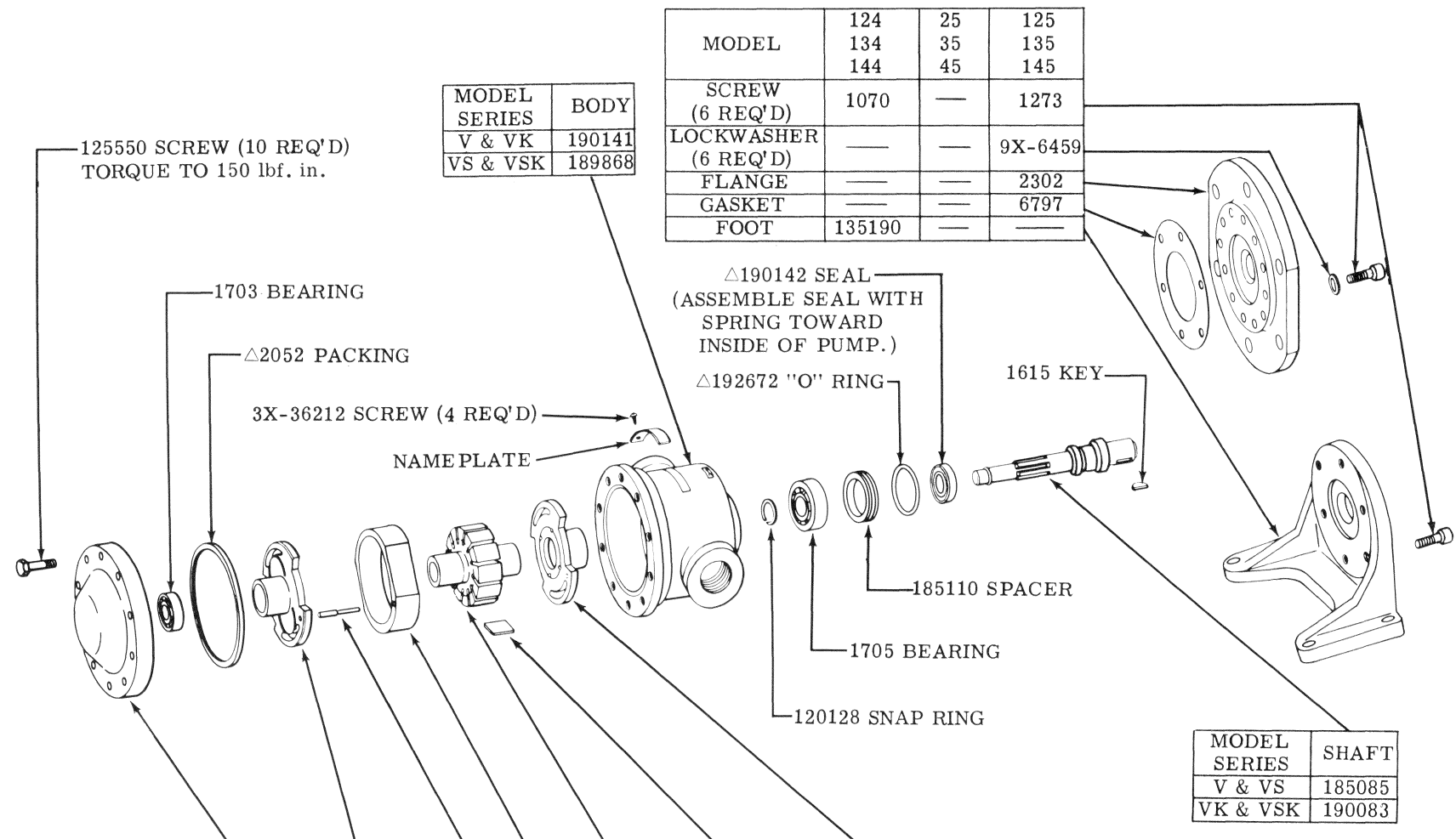
Vane Type Single Pumps

Intermediate Size
 V/VK/VS/VSK-124, 134, 144 Series
 Basic, -10 and -20 Designs



- 20 DESIGN

SEE SERVICE MANUAL
I-3100-S FOR
MAINTENANCE INFORMATION.



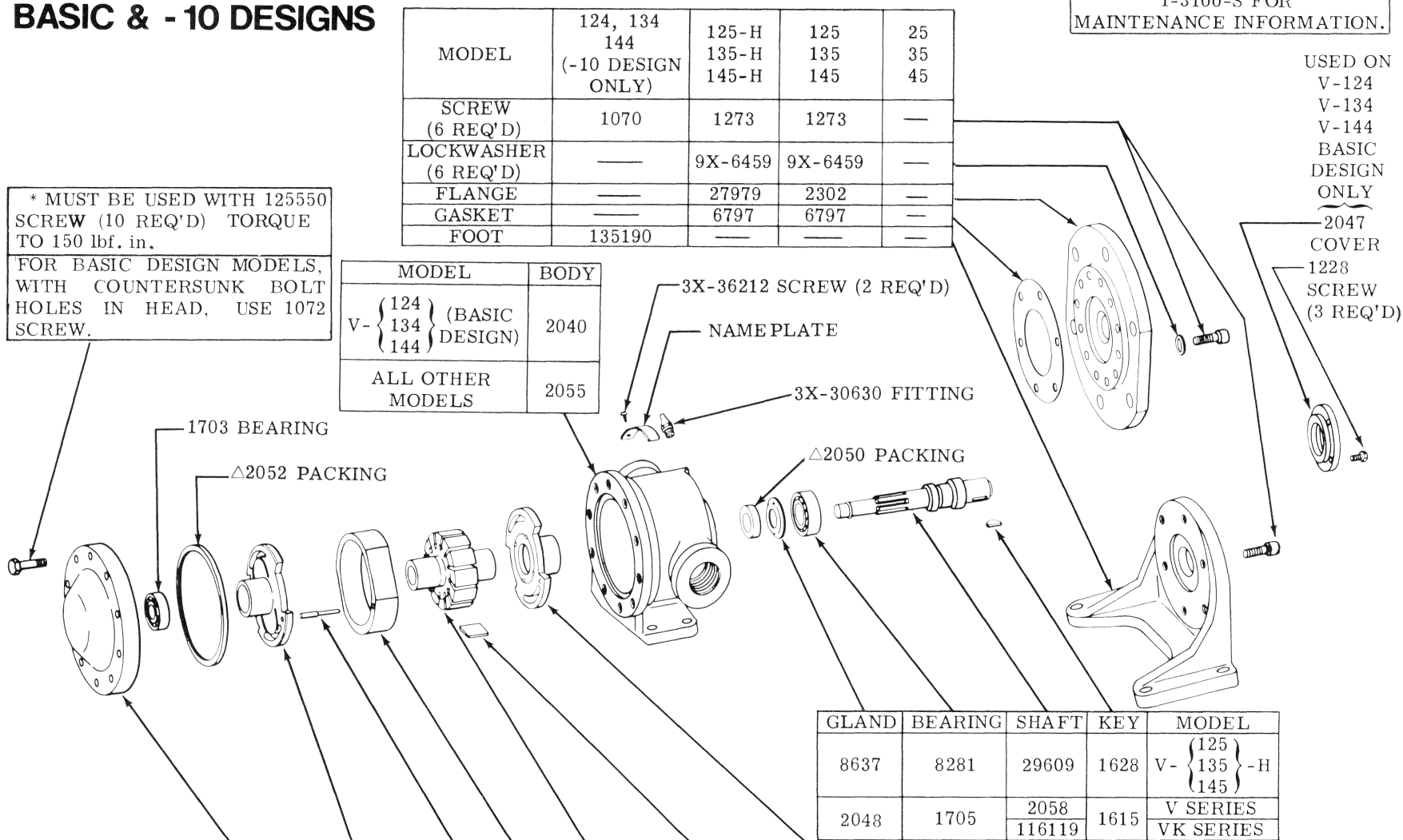
MODELS V, VK, VS & VSK	HEAD	BUSHING		PIN	RING	ROTOR	VANE KIT (12 VANES)	BUSHING		CARTRIDGE KIT	G. P. M. 1200 RPM 0 PSI
		R.H. or L.H.	R.H. or L.H.					R.H. or L.H.	R.H. or L.H.		
THESE PARTS ARE INCLUDED IN CARTRIDGE KITS											
25 - 124 - 125	18495	222046	222045	2051	24188	2042	912023	222045	222046	912077	15.4
35 - 134 - 135					2044					912078	19.5
35U - 134U - 135U					15482					912079	23.0
35X - 134X - 135X					2347					912080	29.9
45 - 144 - 145	6008				3246	2065	912024			912081	37.9

F3 EQUIVALENT
919299 SEAL KIT

Δ INCLUDED IN
919006 GASKET
KIT.

BASIC & - 10 DESIGNS

SEE SERVICE MANUAL
I-3100-S FOR
MAINTENANCE INFORMATION.



MODELS V, VK	*HEAD	BUSHING		PIN	RING	ROTOR	VANE KIT (12 VANES)	BUSHING		CARTRIDGE KIT	G. P. M. 1200 RPM 0 PSI
		R.H. or L.H.	R.H. or L.H.					R.H. or L.H.	R.H. or L.H.		
THESE PARTS ARE INCLUDED IN CARTRIDGE KITS											
25 - 124 - 125	18495	222046	222045	2051	24188	2042	912023	222045	222046	912077	15.4
35 - 134 - 135					2044					912078	19.5
35U - 134U - 135U					15482					912079	23.0
35X - 134X - 135X					2347					912080	29.9
45 - 144 - 145	6008				3246	2065	912024			912081	37.9

Δ INCLUDED IN
912035 GASKET
KIT.