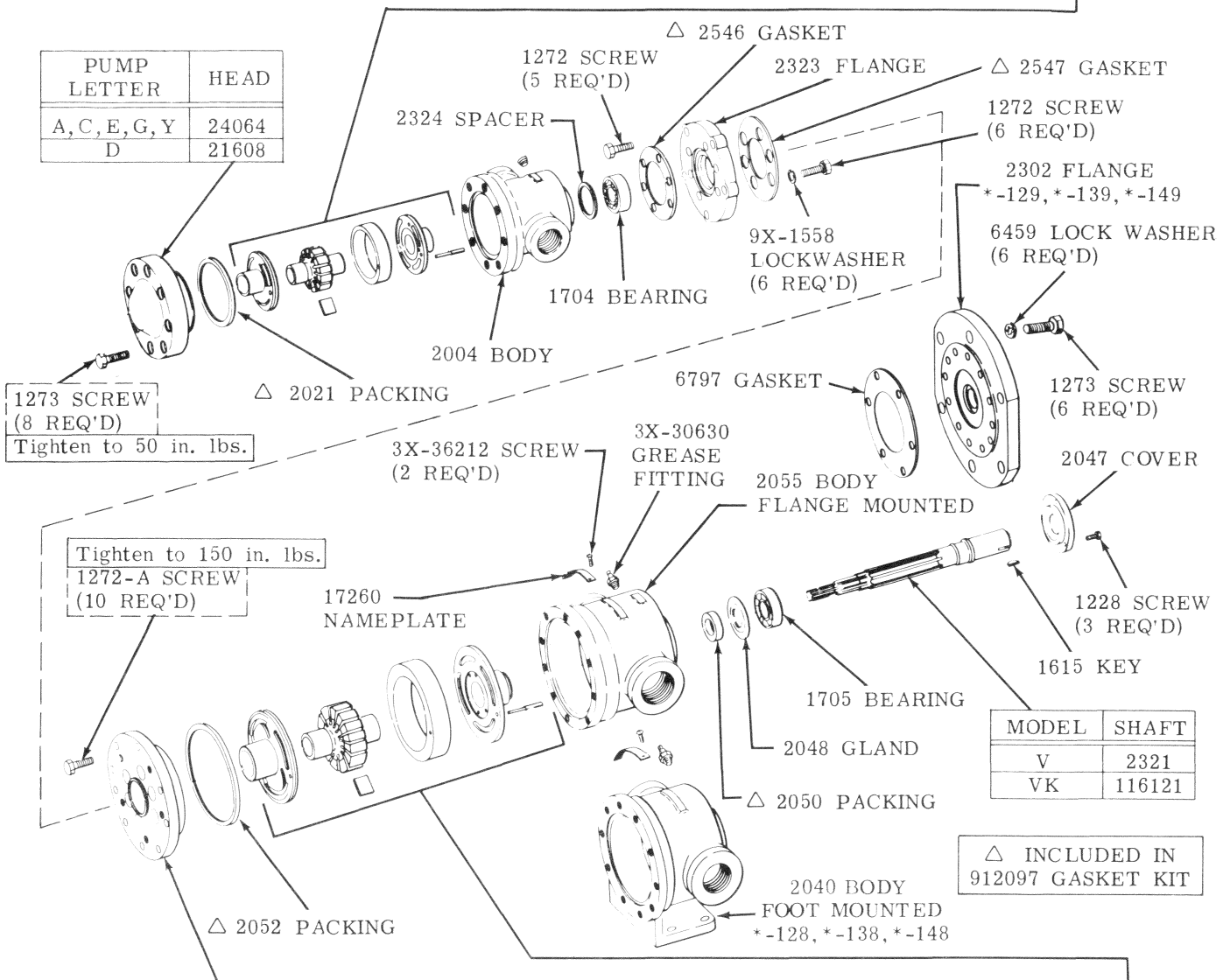


BASIC DESIGN

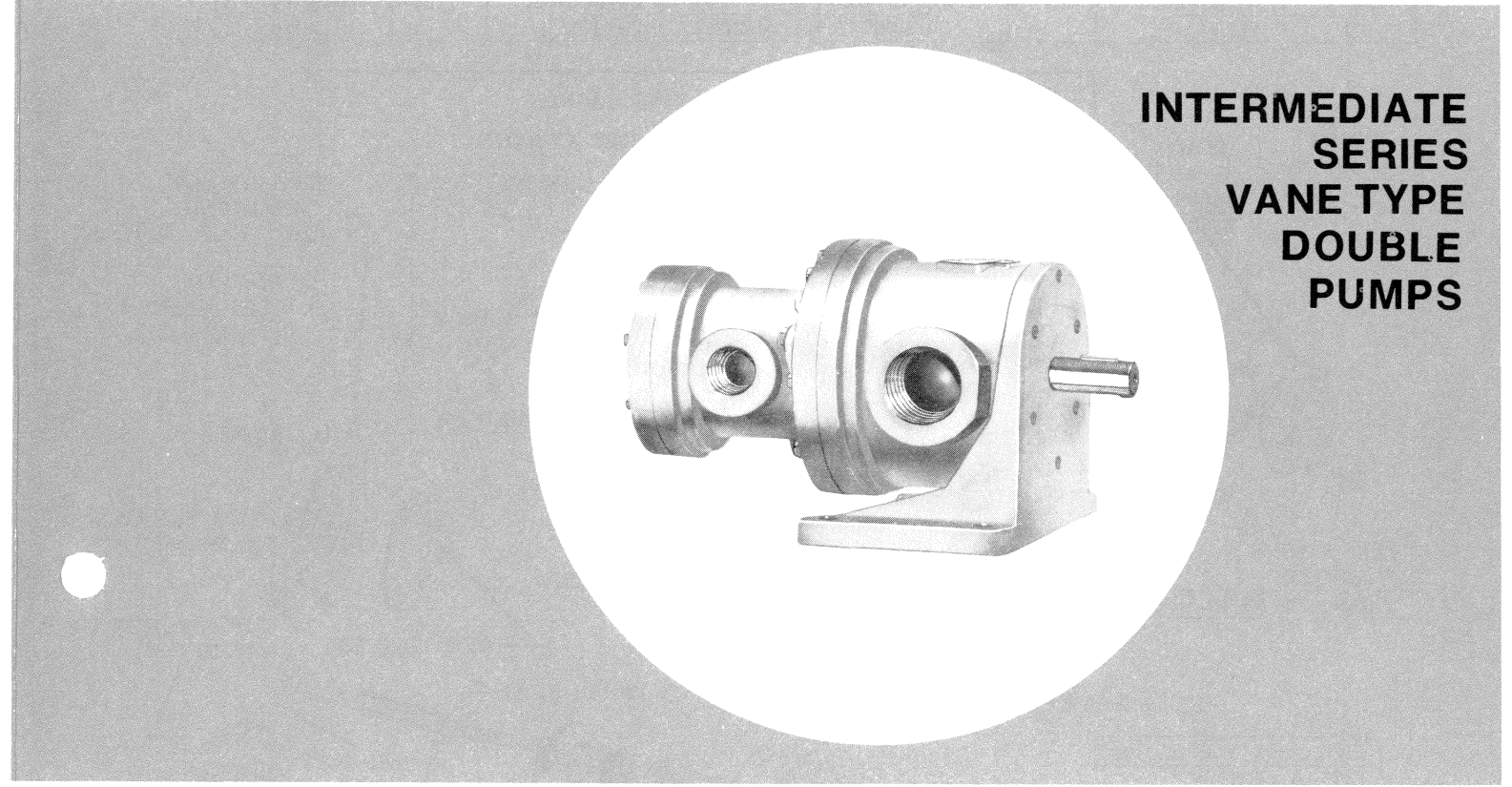
PUMP LETTER	CAP. GPM @ 0 PSI	BUSHING R.H. or L.H. PIN ROTOR VANE KIT (12 VANES) RING BUSHING R.H. or L.H.				CARTRIDGE KIT			
		THESE PARTS ARE INCLUDED IN CARTRIDGE KITS							
Y	1.8					12220			912017
E	2.7					2299			912015
G	3.7	2016	2015	2020	2008	912021	2015	2016	40151
A	5.3								2011
C	8.2								2013
D	11.5								2014
									2014



PUMP MODELS V-VK-VS-VSK	HEAD INT.	CAP. GPM @ 0 PSI	BUSHING R.H. or L.H. PIN ROTOR VANE KIT (12 VANES) RING BUSHING R.H. or L.H.				CARTRIDGE KIT				
			THESE PARTS ARE INCLUDED IN CARTRIDGE KITS								
29-128-129	2322	15.4				24188	912077				
39-138-139		19.5				2044	912078				
39U-138U-139U		23.0	222046	222045	2051	2042	912023	15482	222045	222046	912079
39X-138X-139X		29.9					2347				912080
49-148-149	2325	37.9				2065	912024	3246			912081

To insure sustained efficiency and maximum trouble-free life of this precision equipment, initial and continuous filtration of the fluid medium to 25 microns or less is essential. (For information pertaining to Vickers economical 10 micron filters, see installation drawing 522140.)

Litho in U.S.A.



INTERMEDIATE SERIES VANE TYPE DOUBLE PUMPS

SERVICE PARTS INFORMATION

V, VK, VS & VSK-29, 39*, 49, 128, 129, 138*, 139*, 148, 149 0/10/20 Designs

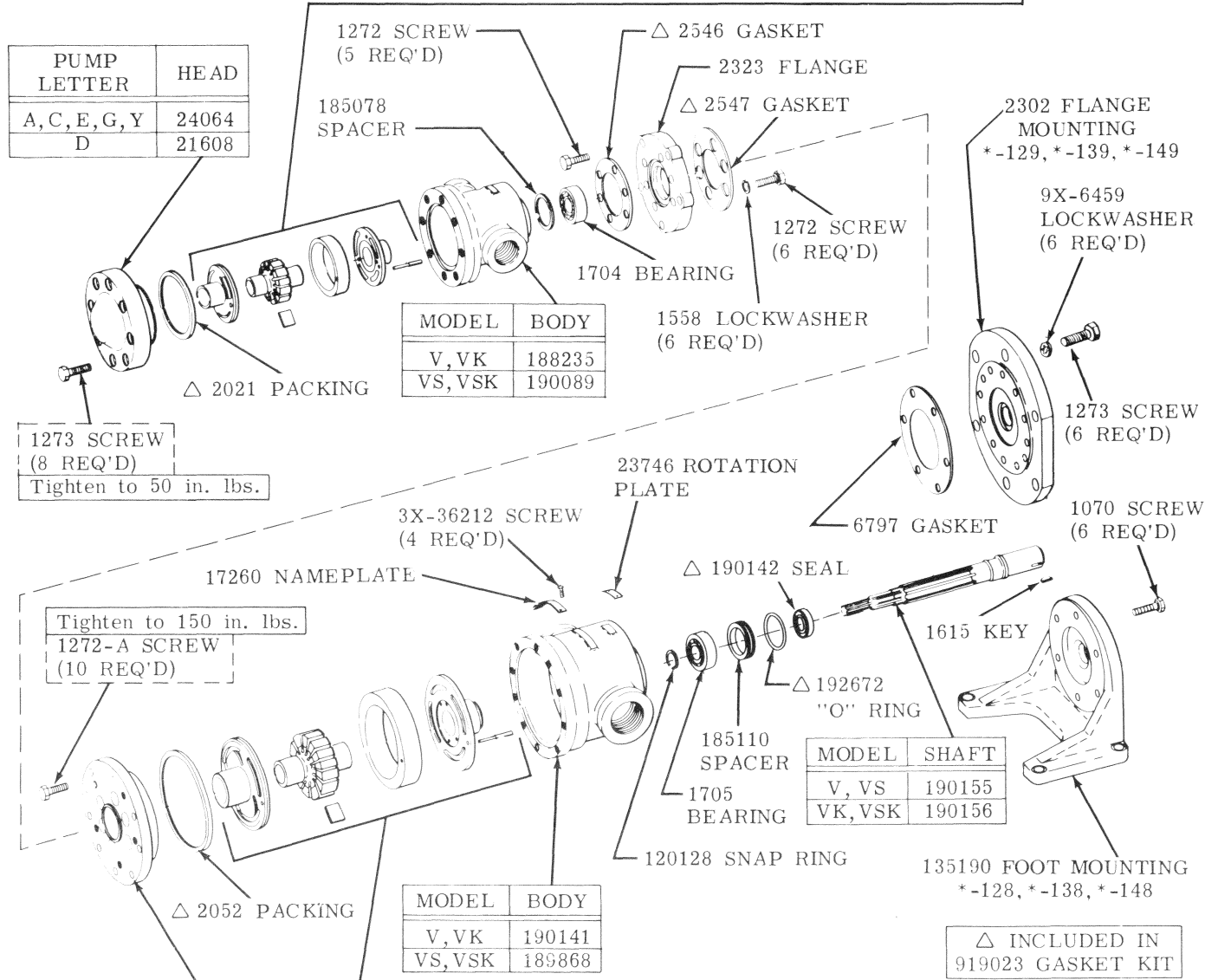
SPERRY VICKERS
TROY, MI. 48084

Revised 2-1-75

I-1696-S

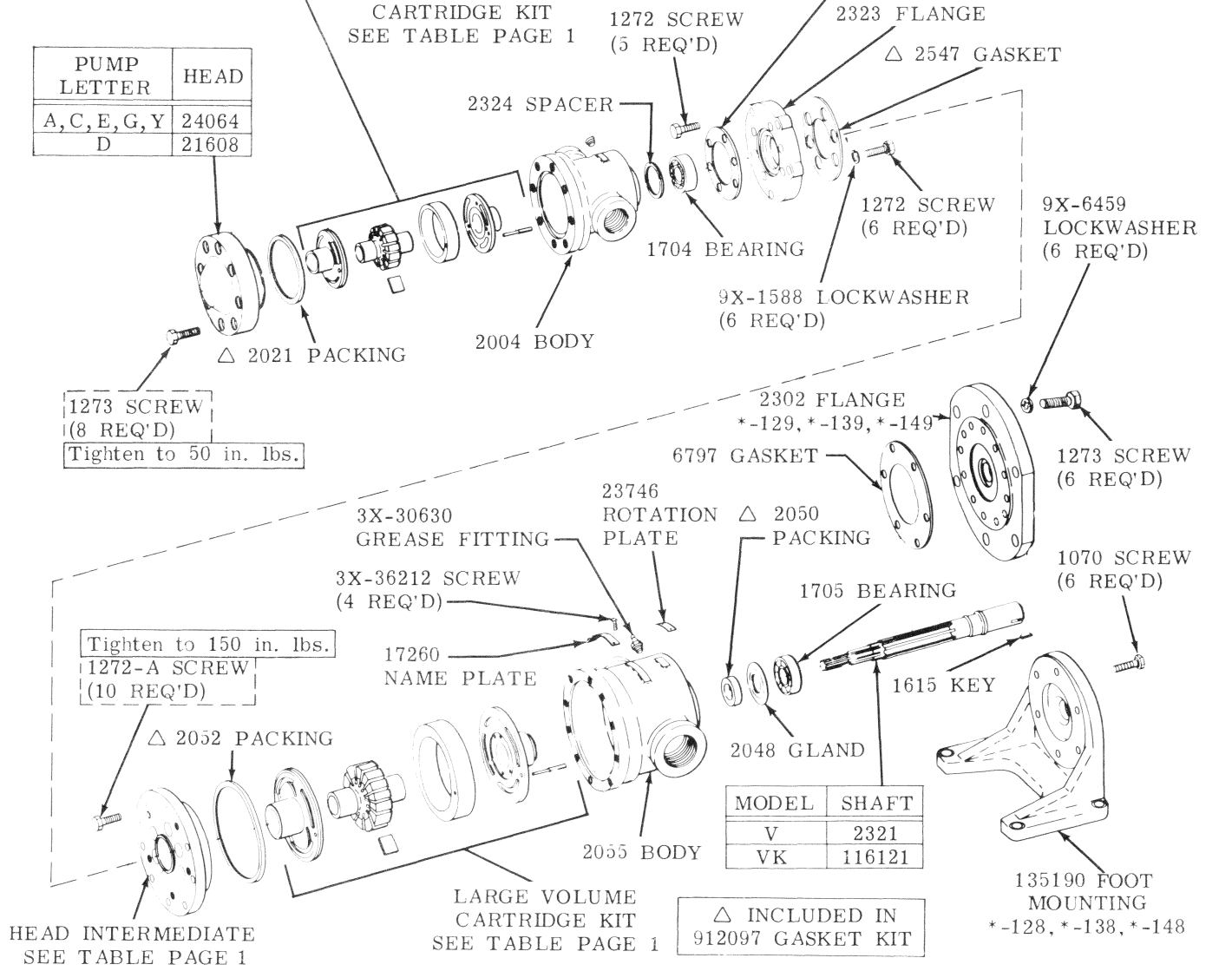
-20 DESIGN

PUMP LETTER	CAP. GPM @ 0 PSI	BUSHING R. H. or L. H.	PIN	ROTOR	VANE KIT (12 VANES)	RING	BUSHING R. H. or L. H.	CARTRIDGE KIT
Y	1.8					12220		912017
E	2.7					2299		912015
G	3.7					40151		912016
A	5.3	2016	2015	2020	2008	912021	2015	2016
C	8.2					2011		912013
						2013		912014
D	11.5			2007		912022		2014
								912018



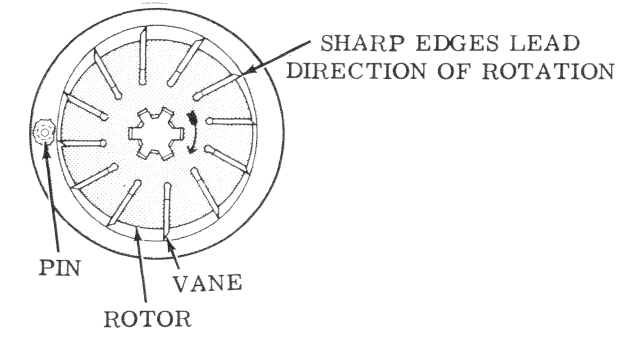
PUMP MODELS V-VK-VS-VSK	HEAD INT.	CAP. GPM @ 0 PSI	BUSHING R. H. or L. H.	PIN	ROTOR	VANE KIT (12 VANES)	RING	BUSHING R. H. or L. H.	CARTRIDGE KIT
29-128-129	2322	15.4					24188		912077
39-138-139		19.5					2044		912078
39U-138U-139U		23.0	222046	222045	2051	2042	912023	15482	222045
39X-138X-139X		29.9						2347	
49-148-149		37.9				2065	912024	3246	

-10 DESIGN



SEE SERVICE MANUAL I-3100-S FOR MAINTENANCE INFORMATION

RIGHT HAND ROTATION SHOWN (VIEWED FROM DRIVE SHAFT END)



Assembly of the rotor and vanes is determined by the direction of pump shaft rotation. Vanes must be assembled so that the small beveled edges are trailing as shown for right hand rotation. Rotation is determined by viewing pump from shaft end.