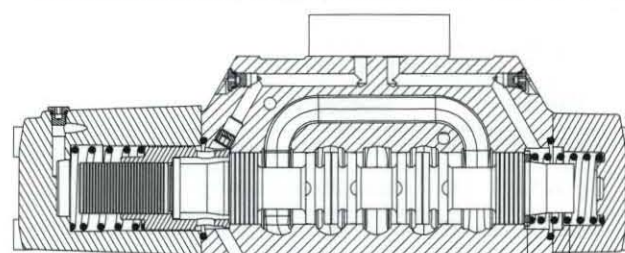
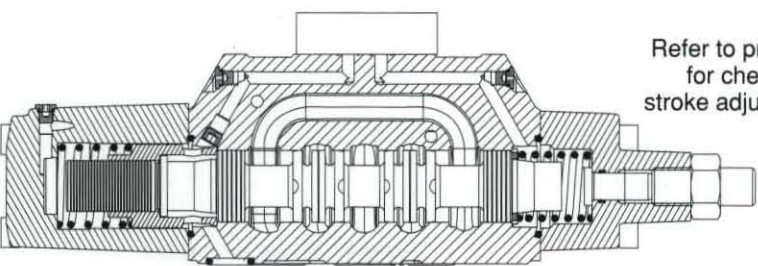
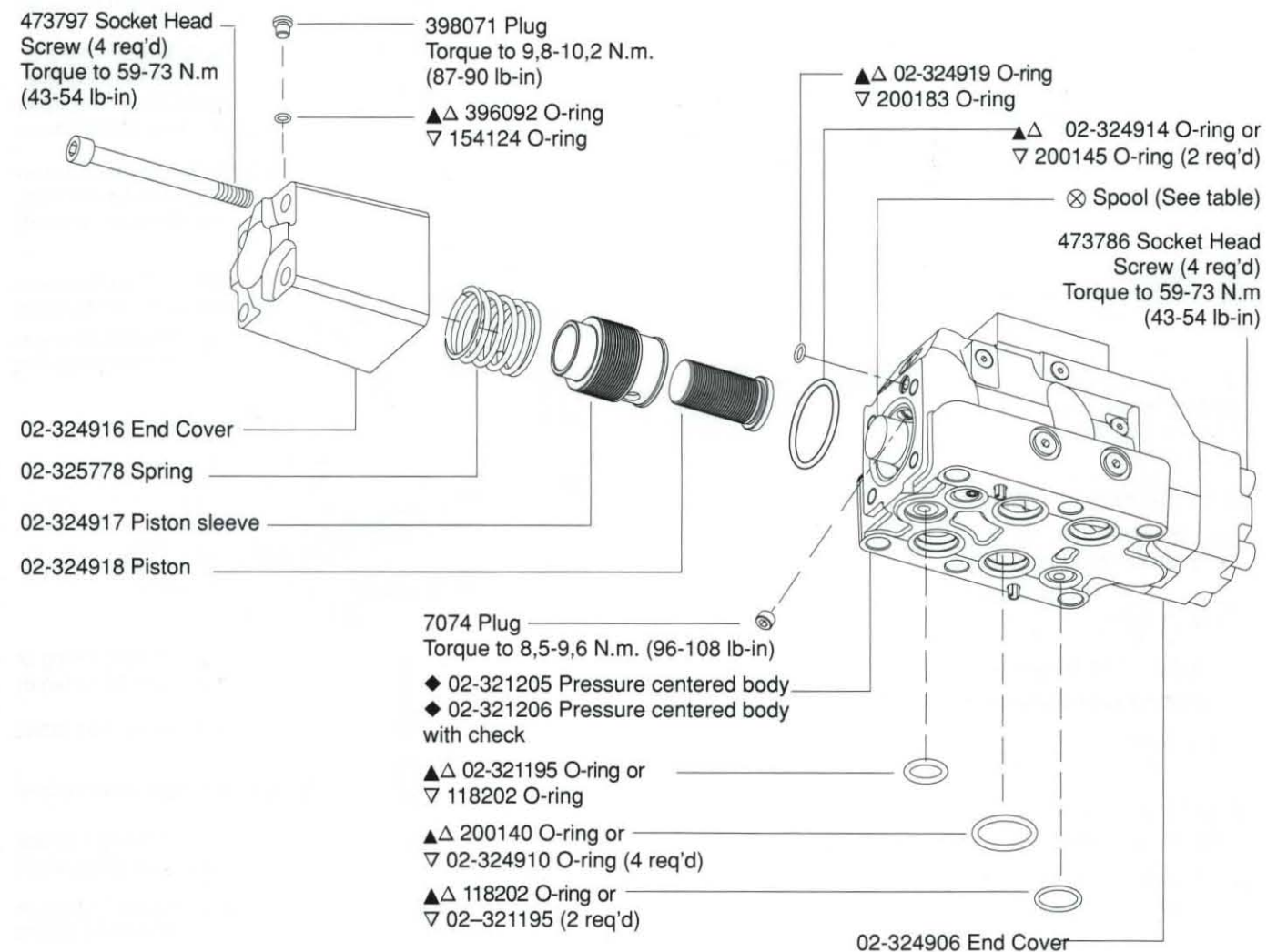


DG3V-8-*(D) (2/8/28)-10
Pressure Centered with
Spool Control
& Check Valve Options
(Refer to model code)

Pressure Centered Cross Sectional View DG3V-8-*D-10



02-321215 Centering washer
★Centering spring (See table)



Refer to previous page
for check valve and
stroke adjustment parts

Pressure Centered Cross Sectional View DG3V-8-*D-8-10
(Stroke Adjustment on Cylinder "B" End Only)

Model Code

(F*) - DG3V - 8 - (B) - ** (L) - (X) - (*) - (*) - 10 - (EN**)

1 2 3 4 5 6 7 8 9 10 11 12

1 Special Seals

(Omit if not required)
F3 - Seals for fire resistant fluids.
F6 - Seals for water glycol.

2 Directional Control Valve

DG3V - Subplate mounting; hydraulic operated. Pressure rating 350 bar (5000 psi) for all ports.

3 Valve Size

8 - Valve size CETOP 8, NFPA D08

4 Gauge Ports

Blank - .4375-20 UNF-2B Thread
B - 1/4 BSP Thread

5 Spool Types

- 0 - Open to T all ports
- 1 - Open P&A to T, closed B
- 2 - Closed to T all ports
- 3 - Closed P&B, open A to T
- 4 - Tandem P to T, closed crossover
- 6 - Closed P only, open A&B to T
- 7 - Open P to A&B, closed T
- 8 - Tandem P to T, open crossover
- 9 - Open to T all ports over tapers
- 11 - Open P&B to T, closed A
- 31 - Closed P&A, open B to T
- 33 - Closed P, open A&B to T over tapers
- 52 - Closed center, regen. by sol. 'A'
- 521 - Closed center, regen. by sol. 'B'

6 Spool/Spring Arrangement

Blank - No spring
A - Spring offset to cylinder 'A'
C - Spring centered
D - Pressure centered 140-210 bar (2000 - 3000 psi)

7 Left Hand Build

L - A Models only, omit if not required.

8 Fast Response

(Omit for standard low shock models)
X - Not recommended for pilot pressures above 210 bar (3000 psi).

9 Spool Control Modifications

- (Omit if not required)
- 1 - Stroke adjustment (both ends) (available on C & Blank (no spring) models)
 - 2 - Pilot choke adjustment (available on all models)
 - 3 - Pilot stroke and stroke adjusters (both ends) (available on C & Blank (no spring) models)
 - 7 - Stroke adjusters on cylinder A end only (available on A, C & Blank (no spring) models)
 - 8 - Stroke adjusters on cylinder 'B' end only (available on A, C, & Blank (no spring) models)
 - 27 - If both are required (available on A, C, & Blank (no spring) models)
 - 28 - If both are required (available on AL left hand build, C & Blank (no spring) models)

Note: Single Offset models with stroke adj:
DG3V-8-*A with stroke adj available as type 8 or 28 only
DG3V-8-*AL with stroke adj available as type 7 or 27 only

Note: Stroke adjustment available as type 8 or 28 option only when used in combination with a Pressure Centered -D model.

10 Check Valve in Pressure Port

(Omit if not required)
K - 0,35 bar (5 psi) check
Q - 2,42 bar (35 psi) check
R - 3,45 bar (50 psi) check
S - 5,20 bar (75 psi) check

11 Design Number

Subject to change. Installation dimensions remain as shown for design numbers 10 through 19.

12 Special Modifications

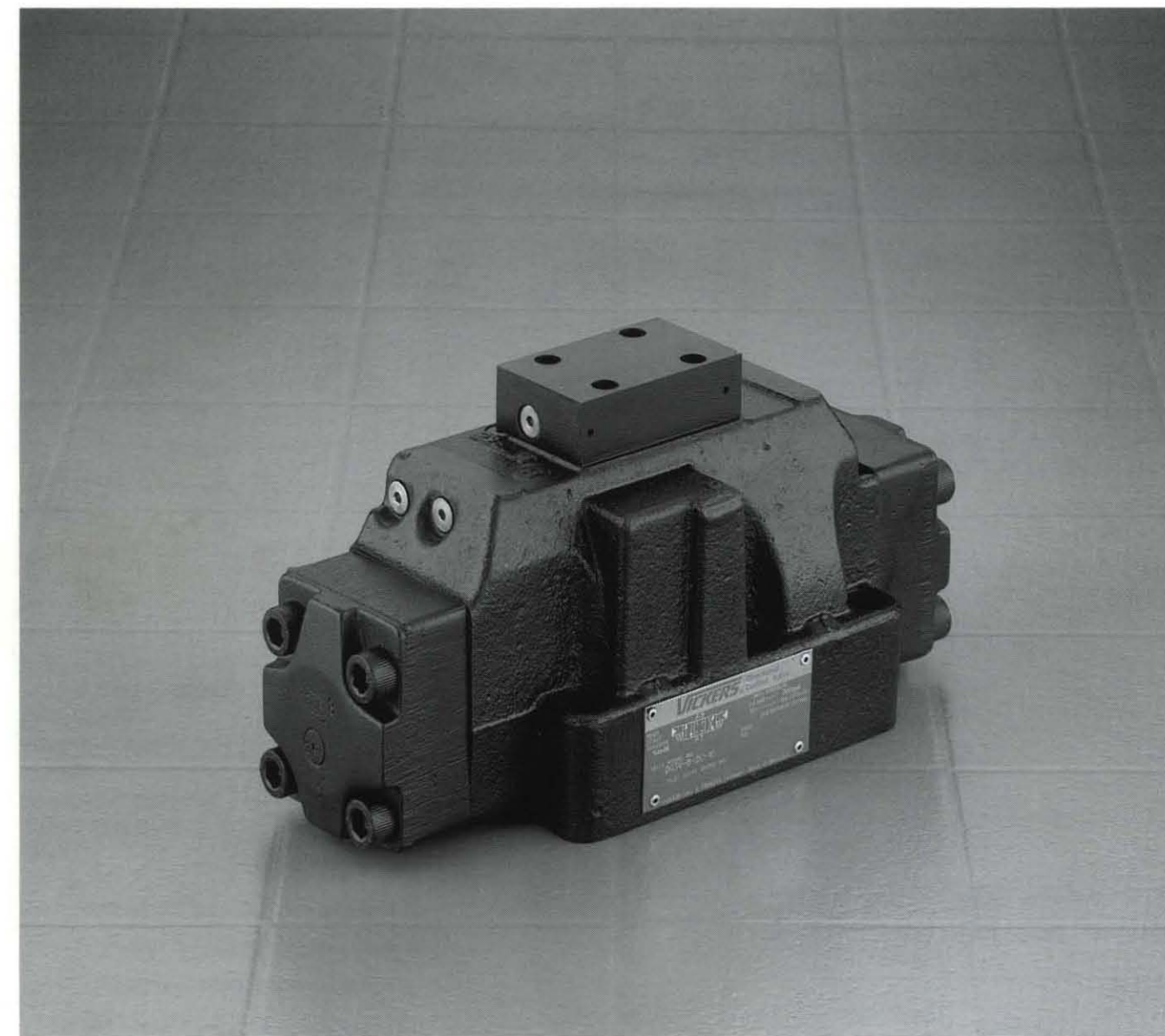
(Omit if not required)

Service Data



Hydraulic Operated Directional Valves

(F*) - DG3V - 8 - (B) - ** - (L) - (X) - (*) - (*) - 10 - (EN**)



Vickers, Incorporated
5445 Corporate Drive
P.O. Box 302
Troy, Michigan
48007-0302
USA

Released 04/96