

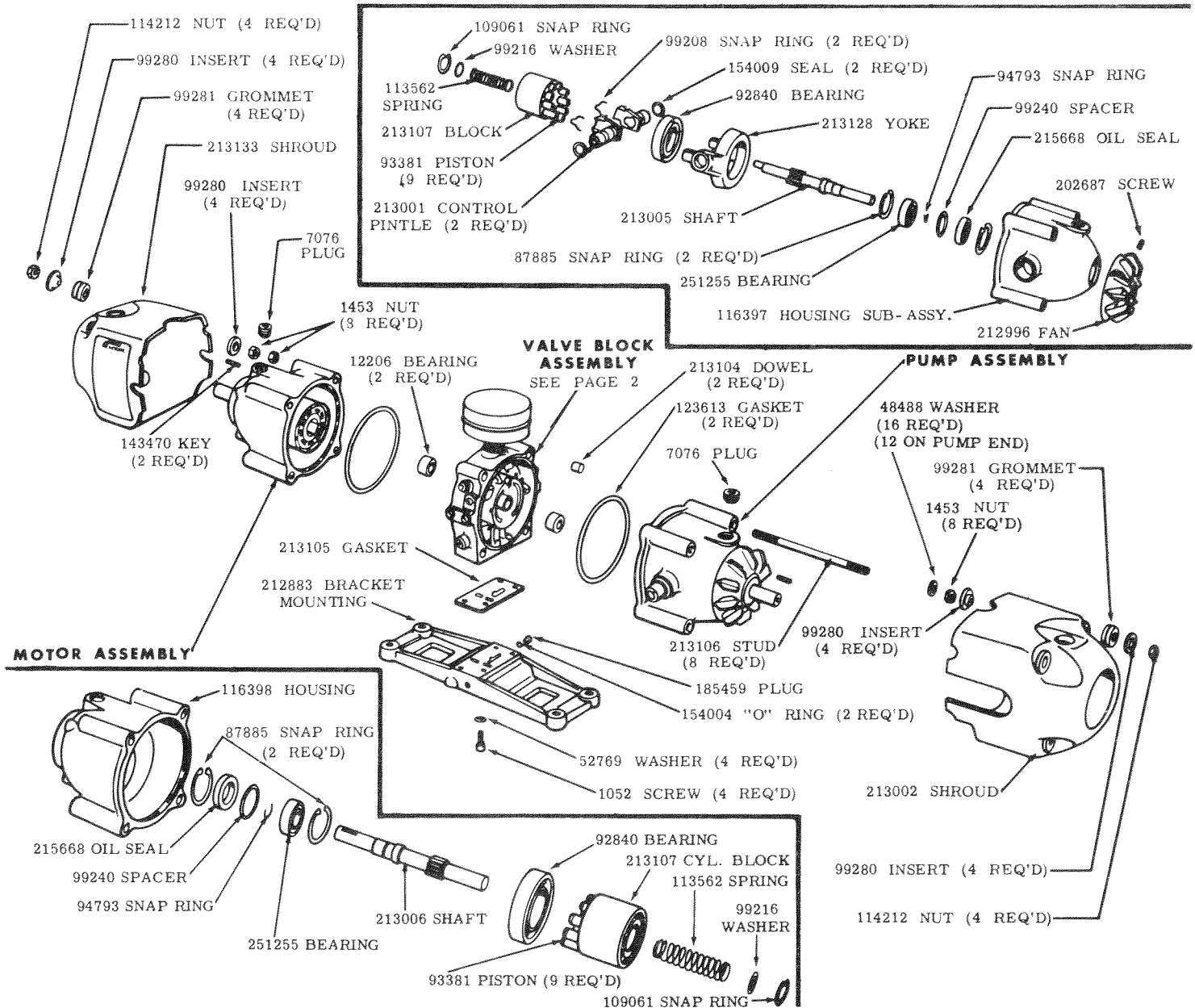
**ADJUSTABLE
SPEED
DRIVES**

Service Parts Information

TR3-**13F13-20

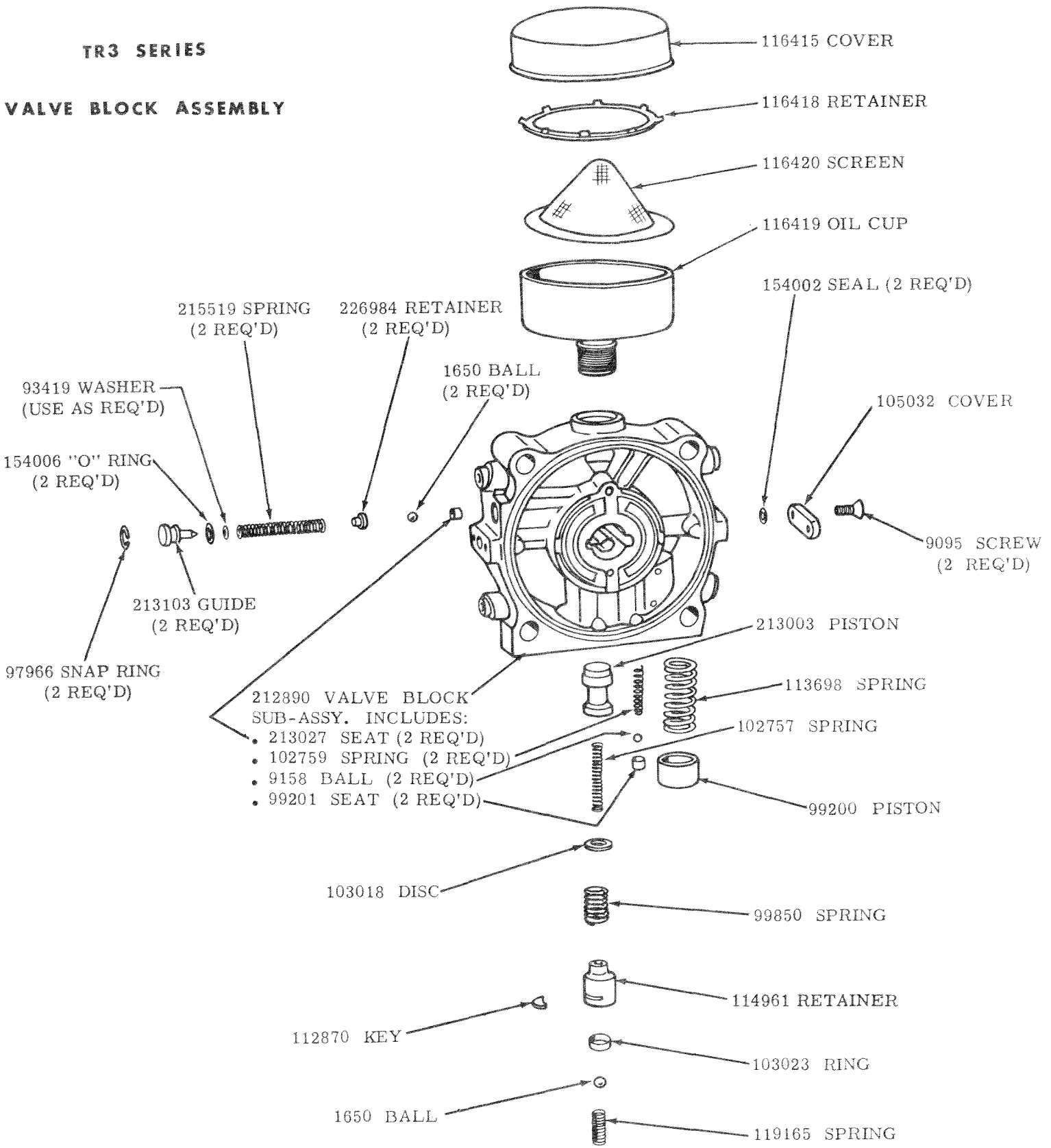
TR3-13F13-20**

TYPE PRESSURE CONTROL FOR PUMP END | 2ND DESIGN NO MODIFICATION
 CONTROL LOCATION FOR RIGHT OR LEFT SIDE | 13/32" DIAMETER CYLINDER BORES
 13/32" DIAMETER CYLINDER BORES | TYPE CONTROL FOR MOTOR END



TR3 SERIES

VALVE BLOCK ASSEMBLY



For satisfactory service life of these components, use full flow filtration to provide fluid which meets ISO cleanliness code 18/15 or cleaner. Selections from Vickers OFP, OFR, and OFRS series are recommended.