

Service Parts Information



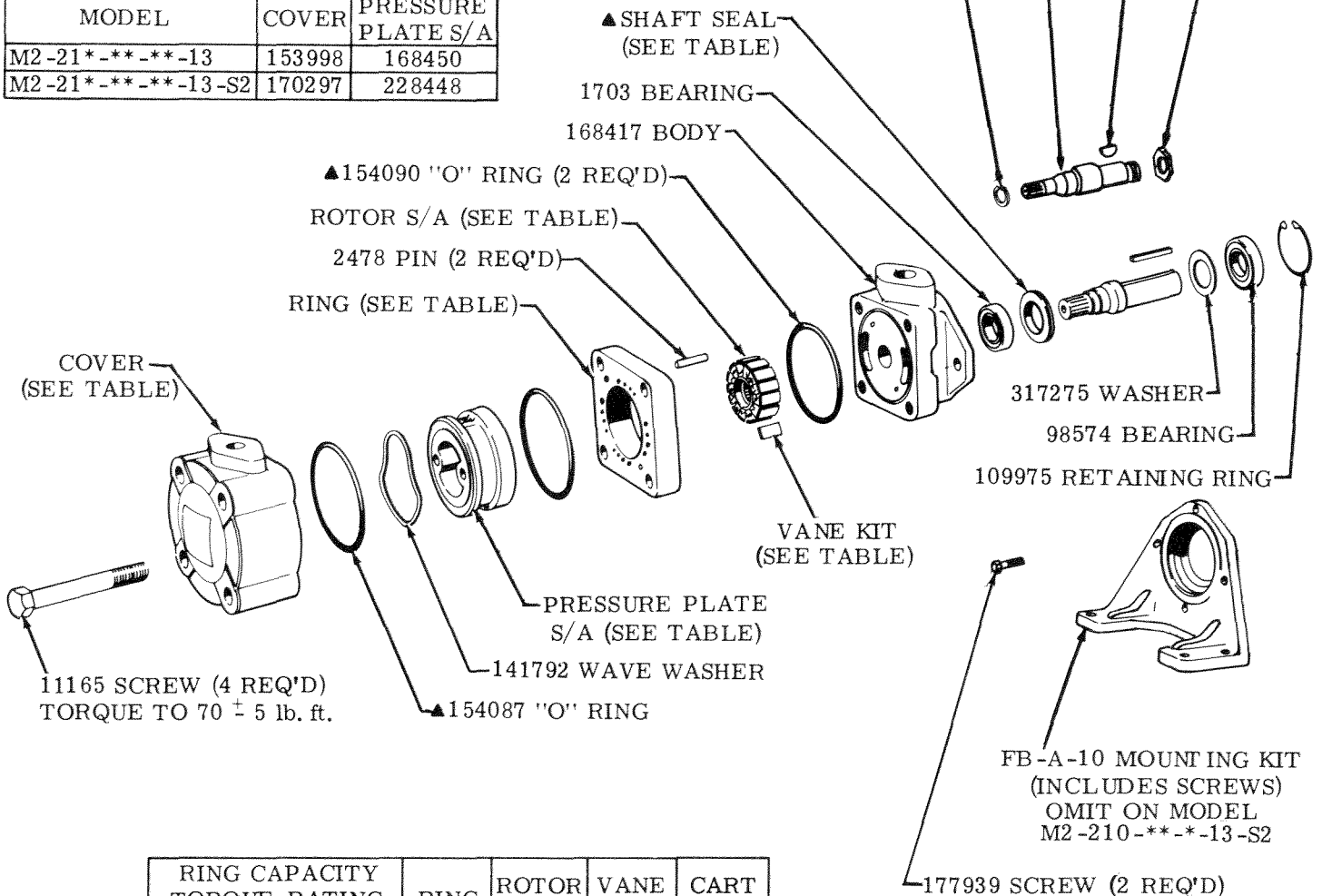
VANE
MOTORS

M2-200 Series

▲SEAL KIT	▲SHAFT SEAL	SHAFT TYPE	RET. RING	SHAFT	KEY	NUT
922832	229236	M2-21*-**-1*-13	—	116644	5881	—
922833	229235	M2-21*-**-3*-13	98653	120037	1615	132260
922832	229236	M2-21*-**-6*-13	—	131420	1609	—
		M2-21*-**-9*-13	—	128300	—	—
		M2-21*-**-11*-13	—	133178	—	—

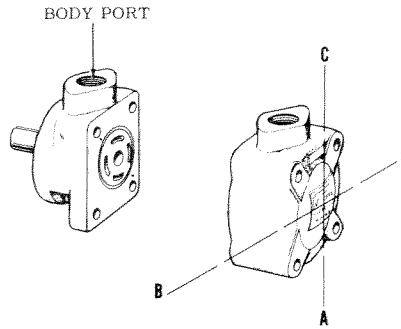
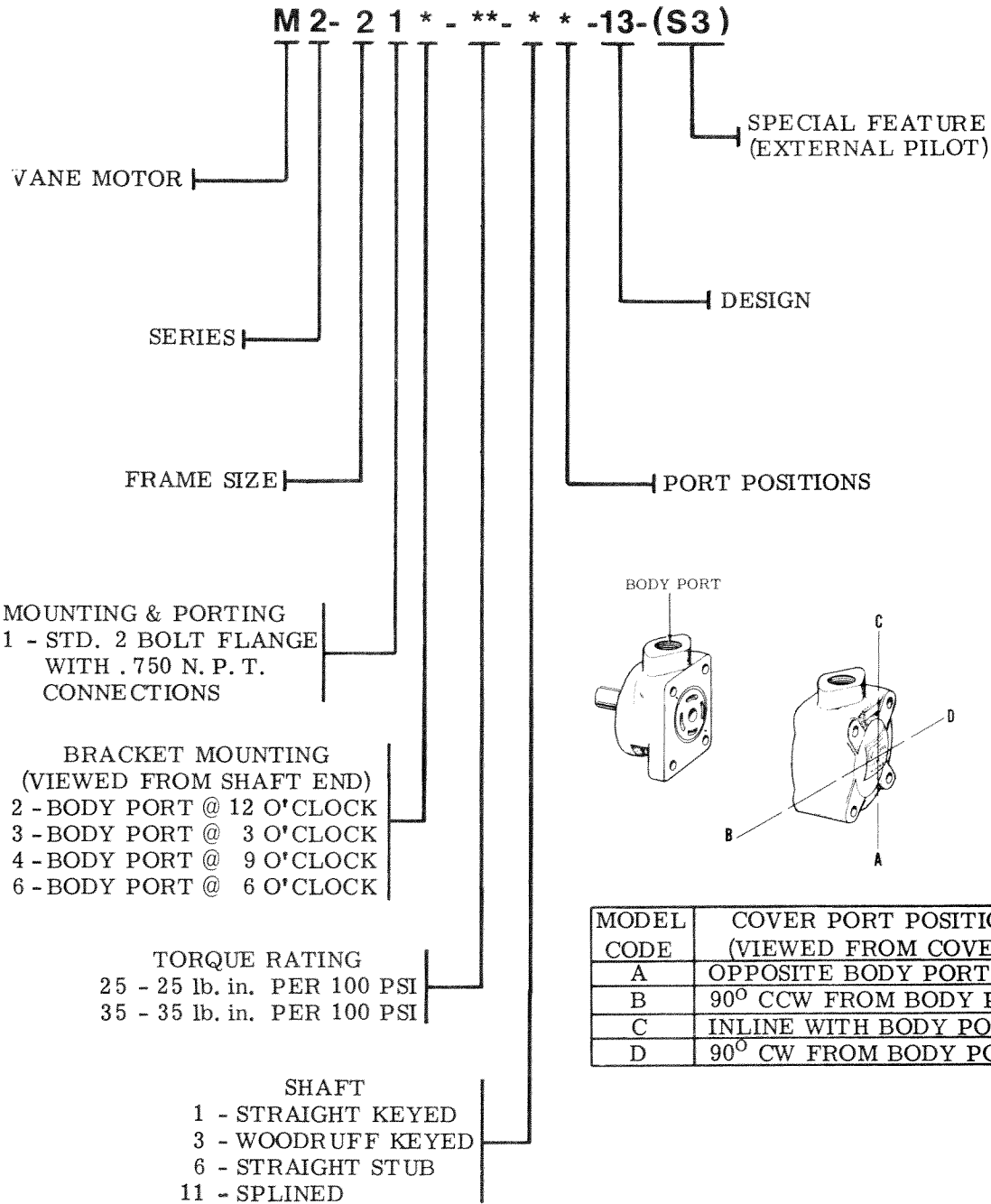
▲INCLUDED
IN SEAL KIT

MODEL	COVER	PRESSURE PLATE S/A
M2-21*-**-**-13	153998	168450
M2-21*-**-**-13-S2	170297	228448



RING CAPACITY TORQUE RATING (lb. in. /100 PSI)	RING	ROTOR S/A	VANE KIT	CART KIT
M2-21*-25**-13	168419	168439	912073	922834
M2-21*-25**-13-S2		172294		941203
M2-21*-35**-13	168418	168440		922835
M2-21*-35**-13-S2		172294		941204

MODEL CODE BREAKDOWN



MODEL CODE	COVER PORT POSITION (VIEWED FROM COVER)
A	OPPOSITE BODY PORT
B	90° CCW FROM BODY PORT
C	INLINE WITH BODY PORT
D	90° CW FROM BODY PORT

For satisfactory service life of these components in industrial applications, use full flow filtration to provide fluid which meets ISO cleanliness code 18/15 or cleaner. Selections from Vickers OFP, OFR, and OFRS series are recommended.