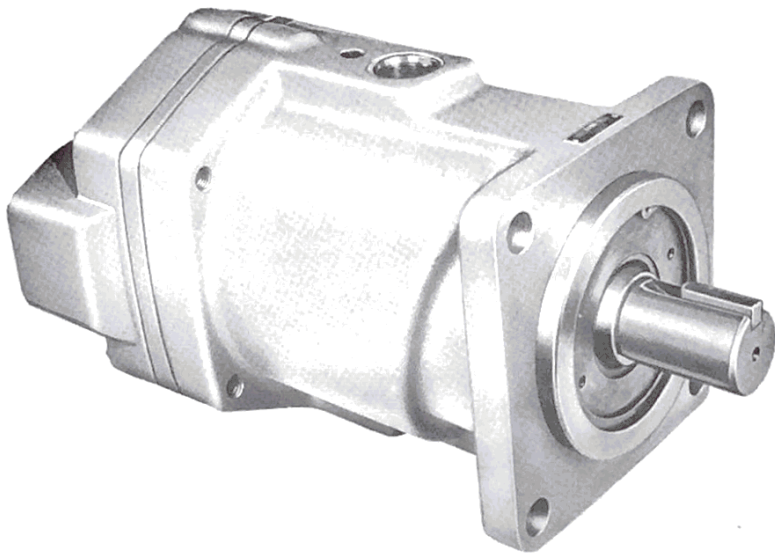


 SPERRY RAND

**90 GPM FIXED DISPLACEMENT
IN-LINE PISTON PUMPS**

VICKERS



**SERVICE
PARTS
INFORMATION**

F6-PFB90-(F)*F-20

INDUSTRIAL DIVISION
TROY, MICHIGAN 48064

MODEL	VALVE PLATE	WAFER PLATE
F6-PFB90-(F)RF-20	323892	323894
F6-PFB90-(F)LF-20	323893	323895

1357 SCREW
(6 REQ'D)
TORQUE TO
110-130 FT. LBS.

3913 PIN (2 REQ'D)

▲ 290086 GASKET

323896 SPACER

271537 BEARING

▲ 290086 GASKET

10006 PIN
(2 REQ'D)

323896 SPACER

162513 RETAINING RING

● 290084 NUT (2 REQ'D)

1028 SCREW (4 REQ'D)

● 290085 PLATE (2 REQ'D)

323897 SLEEVE

227401 SCREW (8 REQ'D)

164432 INSTRUCTION PLATE

● 316671 HOUSING

NAME PLATE

247101 KEY

316672 SHAFT

▲ 154132 "O" RING

181765 PLUG

132474 RETAINER

121555 RETAINER

248541 BEARING

▲ 199823 "O" RING

316670 FACE SEAL

▲ 154090 "O" RING

318195 SPRING

MODEL	ROTATION PLATE
F6-PFB90-(F)RF-20	216522
F6-PFB90-(F)LF-20	187608

250471 BRACKET

212500 SCREW
(4 REQ'D)

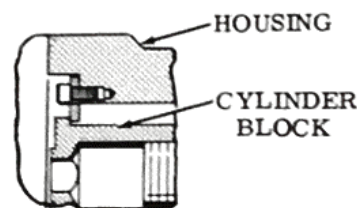
FOR MODELS
WITH FOOT BRACKET

SNAP RING	WASHER	SPRING	WASHER	● CYLINDER BLOCK	PIN (4 REQ'D)	WASHER	WASHER	SHOE PLATE	PISTON S/A KIT	SWASH PLATE	ROTATING GROUP KIT
190275	290082	249901	290081	291935	248861	261437	248444	287181	941657	287180	938285

THESE PARTS INCLUDED IN

CAUTION

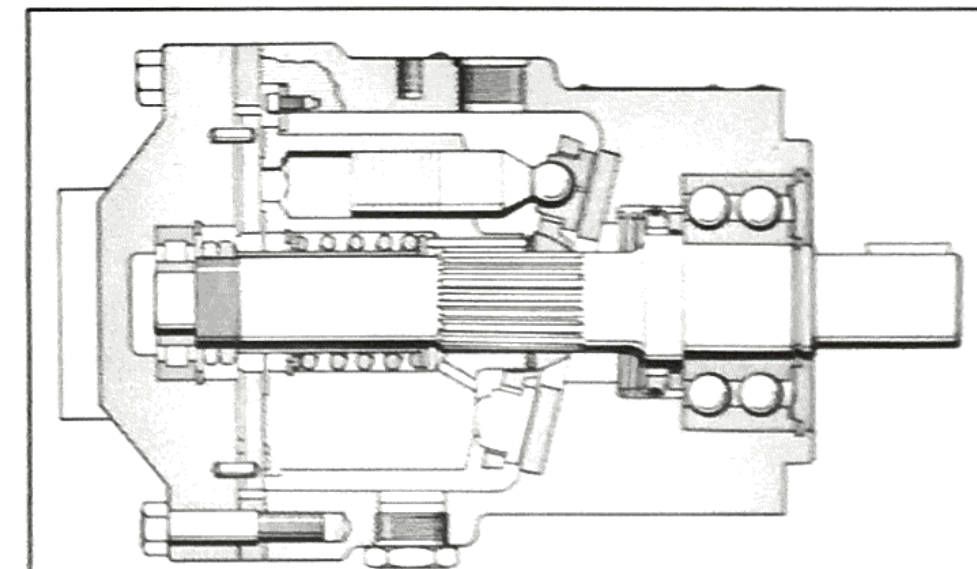
● BEFORE ASSEMBLY CHECK CLEARANCE BETWEEN CYLINDER BLOCK AND HOUSING WITH 248861 PINS REMOVED. FACE OF CYLINDER BLOCK MUST BE 0.000 TO 0.013 INCHES BELOW HOUSING FACE.



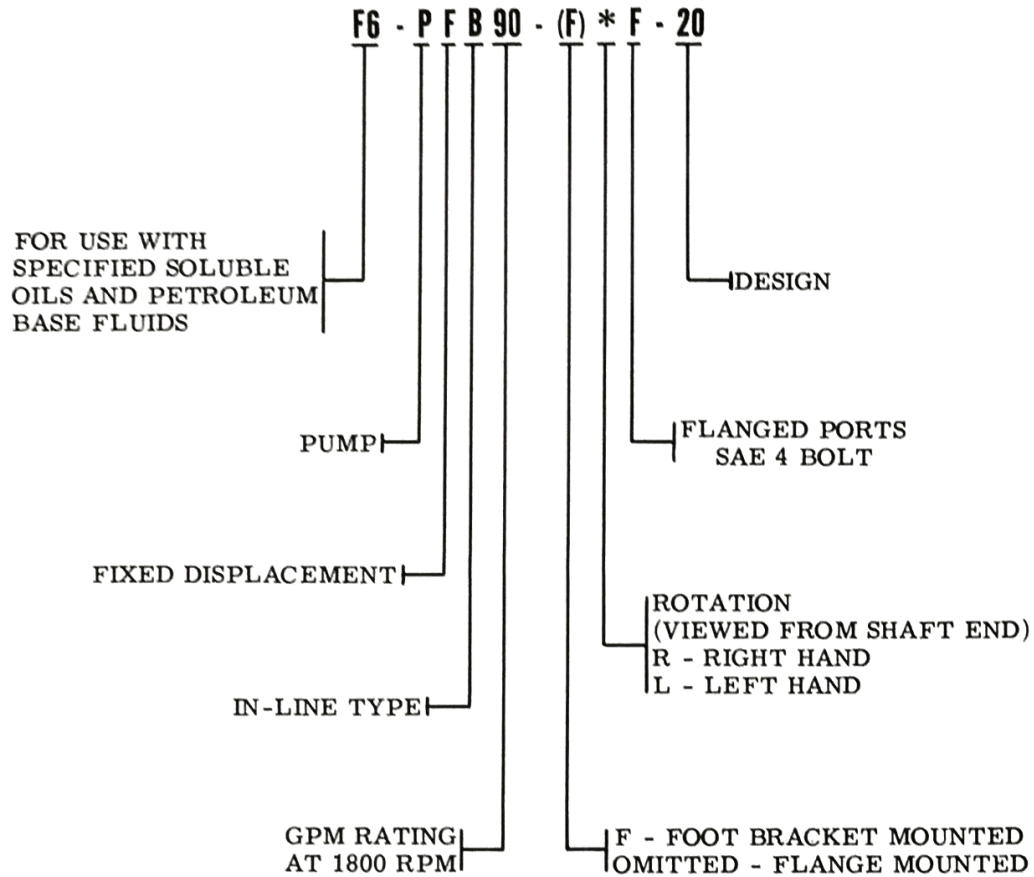
0.000 TO 0.013

● TURN NUT (NEXT TO SLEEVE) FINGER TIGHT. BACK OFF NUT 1/4 TURN AND LOCK INTO POSITION WITH OTHER NUT.

▲ INCLUDED IN
919523 GASKET KIT



MODEL CODE BREAKDOWN



To insure sustained efficiency and maximum trouble-free life of this precision equipment, initial and continuous filtration of the fluid medium to 25 microns or less is essential. (For information pertaining to Vickers economical 10 micron filters, see installation drawing I & M 229847.)