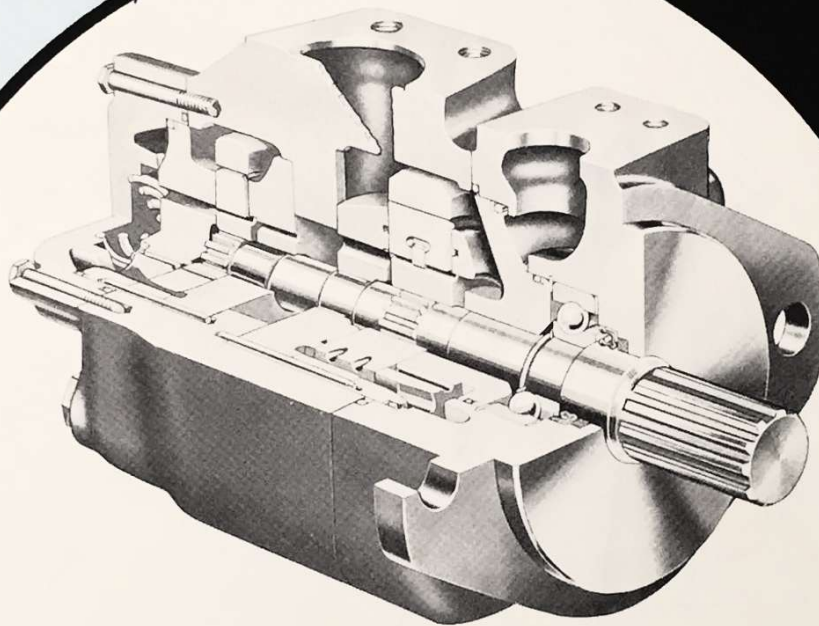


**VICKERS**

MOBILE HYDRAULICS DIVISION

**SERVICE  
PARTS  
CATALOG**

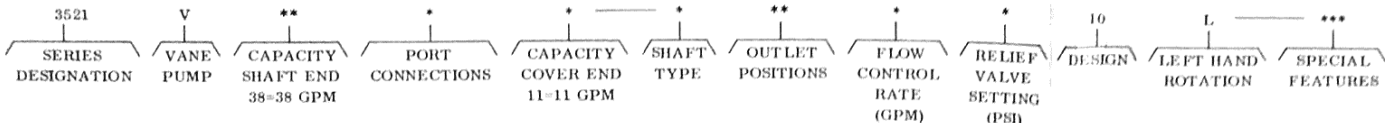
 **SPERRY RAND**



**3521V SERIES  
-10 DESIGN  
DOUBLE PUMPS**

**VICKERS DIVISION**  
TROY, MICHIGAN 48064

**MODEL CODE**



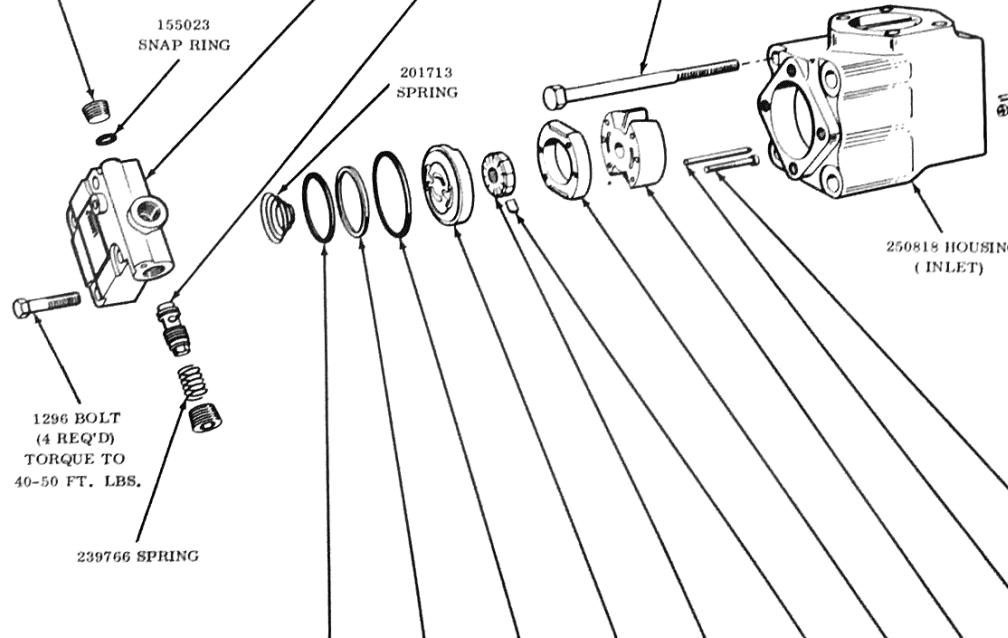
MODEL DESIGNATION	COVER TYPE	COVER SUB-ASSEMBLY
3521V*A-***10	4-BOLT STRAIGHT THREAD	250824
3521V*E-***10	FLOW CONTROL	252504
3521V*E-***2*10	FLOW CONTROL	257560
3521V*E-***4*10	FLOW CONTROL	257561
3521V*E-***6*10	FLOW CONTROL	257562
3521V*E-***7*10	FLOW CONTROL	257563
3521V*E-***8*10	FLOW CONTROL	257564
3521V*E-***10*10	FLOW CONTROL	257565
3521V*E-***12*10	FLOW CONTROL	257999

RELIEF VALVE SUB-ASSEMBLY	RELIEF VALVE SETTING (PSI)	MODEL DESIGNATION
232794	750	3521V***-***C10
232795	1000	3521V***-***D10
232796	1250	3521V***-***E10
232797	1500	3521V***-***F10
232798	1750	3521V***-***G10
232799	2000	3521V***-***H10

LOCK RING	SNAP RING	BEARING	SHAFT	KEY	WASHER	MODEL DESIGNATION
193144	119982	218585	252717 252716	88678	193220	3521V***-1*10 3521V***-11*10

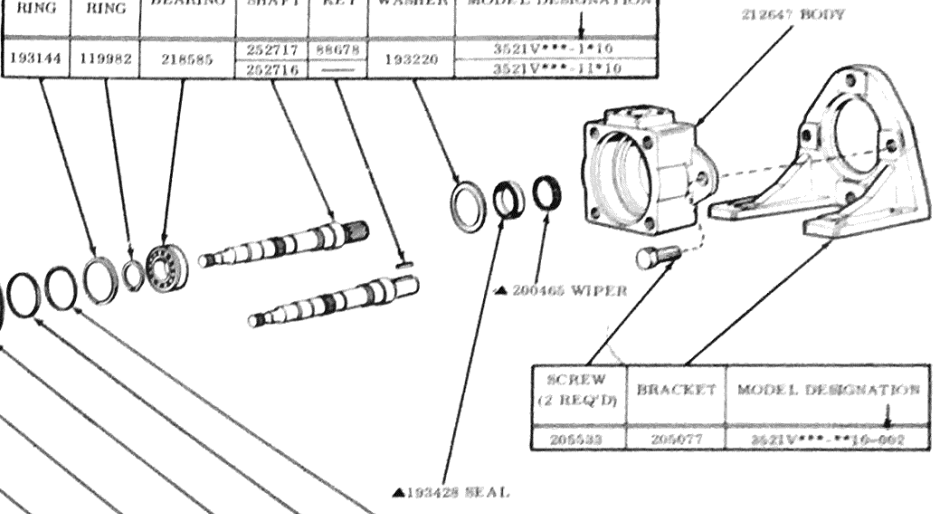
7077 PLUG (2 REQ'D)  
155023 SNAP RING  
1296 BOLT (4 REQ'D) TORQUE TO 40-50 FT. LBS.  
239766 SPRING

42023 BOLT (4 REQ'D) TORQUE TO 85-95 FT. LBS.

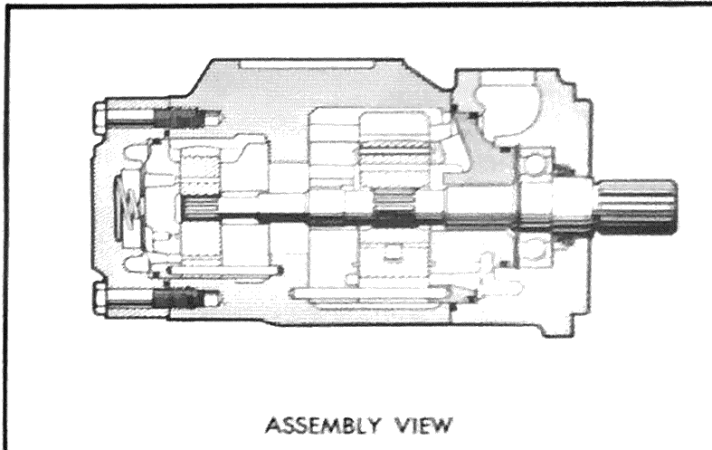


SCREW (2 REQ'D)	PIN (2 REQ'D)	WEAR PLATE SUB-ASSEMBLY	RING	ROTOR	VANE KIT (10 VANES 10 INSERTS)	PRESSURE PLATE	"O" RING	BACK-UP RING	"O" RING	"O" RING	BACK-UP RING	CARTRIDGE KIT	MODEL DESIGNATION
THESE PARTS ARE SERVICED IN CARTRIDGE KIT													
289475	280031	325450	319396 319397 319398 319399	262154	922700	325452	▲154101	▲271811	▲154098	▲154084	▲263717	923259 923260 923261 923262	3521V25***-10 3521V30***-10 3521V35***-10 3521V38***-10

"O" RING	BACK-UP RING	"O" RING	PRESSURE PLATE	ROTOR	VANE KIT (12 VANES)	RING	WEAR PLATE	PIN (2 REQ'D)	SCREW (2 REQ'D)	CARTRIDGE KIT	MODEL DESIGNATION
THESE PARTS ARE SERVICED IN CARTRIDGE KIT											
▲154088	▲266392	▲154090	282500	172302 172294 215043	912031 912032 922568	251100 251101 251103 251104	252004 252005 253279	158465	289473	923044 923045 923046 923047 923048	3521V**5-**10 3521V**6-**10 3521V**8-**10 3521V**9-**10 3521V**11-**10



SCREW (2 REQ'D)	BRACKET	MODEL DESIGNATION
205533	205077	3521V***-10-002



▲-THESE PARTS ARE INCLUDED IN SEAL KIT 922890

ASSEMBLY VIEW

# SPARE PARTS STOCK RECOMMENDATIONS (FOR EACH 100 UNITS IN OPERATION)

3521V

PART NUMBER	NAME	CAPACITY SHAFT END (GPM)	PORT CONNECTION	CAPACITY COVER END (GPM)	SHAFT TYPE	OUTLET POSITIONS	FLOW CONTROL RATE	RELIEF VALVE SETTING	DESIGN	LEFT HAND ROTATION	SPECIAL FEATURES	QUANTITY PER UNIT	QUANTITY RECOMMENDED FOR STOCK
1296	BOLT											4	20
SEE PAGE 1	COVER		A, E				2, 4, 6, 7 8, 10, 12					1	2
155023	SNAP RING		E									1	10
SEE PAGE 1	RELIEF VALVE SUB-ASSEMBLY							C, D, E, F, G, H				1	2
239766	SPRING		E									1	10
7077	PLUG		E									2	4
201713	SPRING											1	10
282500	PRESSURE PLATE			5, 6, 8, 9, 11								●1	15
SEE PAGE 1	ROTOR			5, 6, 8, 9, 11								●1	15
SEE PAGE 1	VANE KIT			5, 6, 8, 9, 11								●1	15
SEE PAGE 1	RING			5, 6, 8, 9, 11								●1	15
SEE PAGE 1	WEAR PLATE			5, 6, 8, 9, 11								●1	15
158465	PIN			5, 6, 8, 9, 11								●2	15
289473	SCREW			5, 6, 8, 9, 11								●2	15
SEE PAGE 1	CARTRIDGE KIT			5, 6, 8, 9, 11								1	15
42023	BOLT											4	20
250818	HOUSING											1	2
289475	SCREW	25, 30, 35, 38										●2	15
280031	PIN	25, 30, 35, 38										●2	15
325450	WEAR PLATE SUB-ASSEMBLY	25, 30, 35, 38										●1	15
SEE PAGE 2	RING	25, 30, 35, 38										●1	15
262154	ROTOR	25, 30, 35, 38										●1	15
922700	VANE KIT	25, 30, 35, 38										●1	15
325452	PRESSURE PLATE	25, 30, 35, 38										●1	15
SEE PAGE 2	CARTRIDGE KIT	25, 30, 35, 38										1	15
193144	LOCK RING											1	10
119982	SNAP RING											1	10
218585	BEARING											1	10
88678	KEY				1							1	5
252717	SHAFT				1							1	7
252716	SHAFT				11							1	7
193220	WASHER											1	10
212647	BODY											1	2
205533	SCREW										002	2	10
205077	BRACKET										002	1	2
922860	SEAL KIT											1	25

CONTACT VICKERS APPLICATION ENGINEER FOR SPECIAL FEATURE INFORMATION.

● MAY BE PURCHASED IN CARTRIDGE KIT



WHEN ORDERING SPARE CARTRIDGE PARTS, IT IS RECOMMENDED THEY BE OBTAINED IN CARTRIDGE KITS. KITS ARE ASSEMBLED AND TESTED BY VICKERS FOR EITHER RIGHT OR LEFT HAND ROTATION. IF LEFT HAND ROTATION IS REQUIRED IT SHOULD BE SPECIFIED ON PARTS ORDER BY ADDING SUFFIX "L" TO CARTRIDGE KIT NUMBER: FOR EXAMPLE, 923259-L.

To insure sustained efficiency and maximum trouble-free life of this precision equipment, initial and continuous filtration of the fluid medium to 25 microns or less is essential. For information pertaining to Vickers economical 10 micron filters, see installation drawing M 229847.