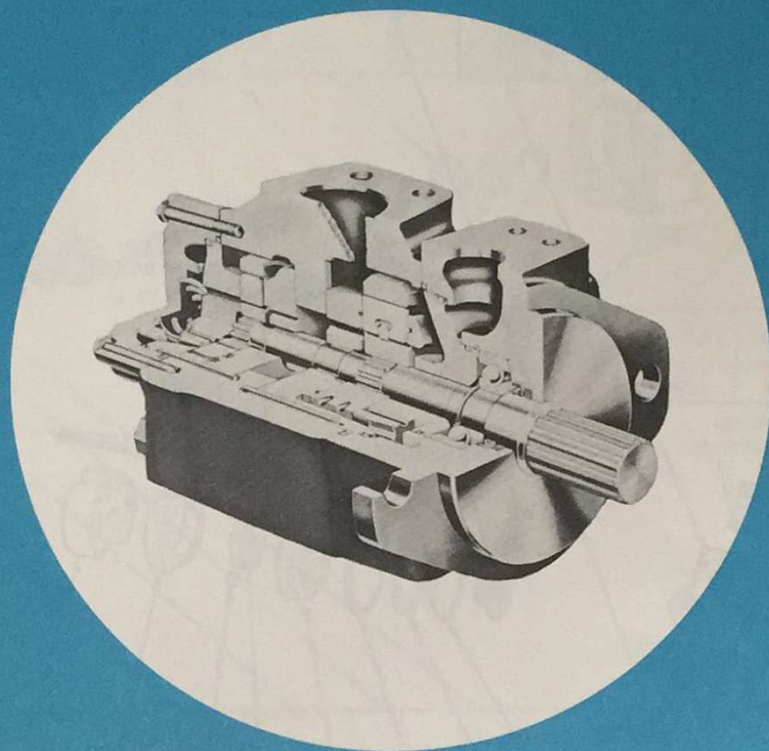


SPERRY VICKERS



**DOUBLE
PUMPS**

**SERVICE
PARTS
INFORMATION**

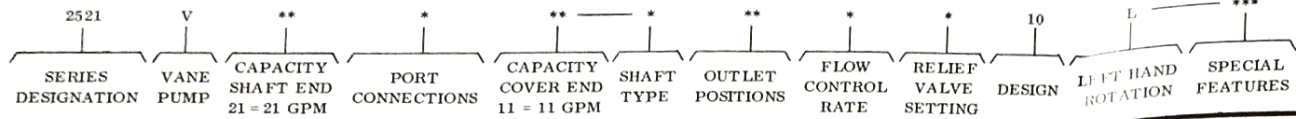
**2521V SERIES
-10 DESIGN**

**SPERRY VICKERS
TROY, MI. 48084**

Revised 3-1-76

M-2303-S

MODEL CODE



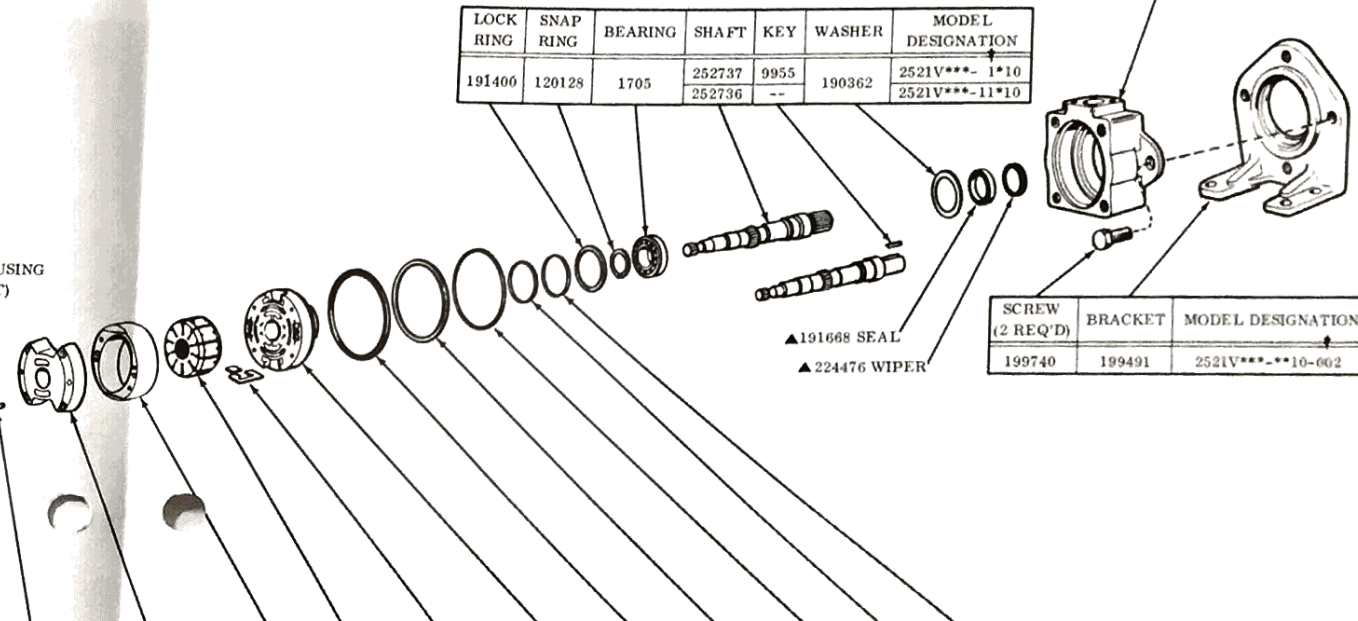
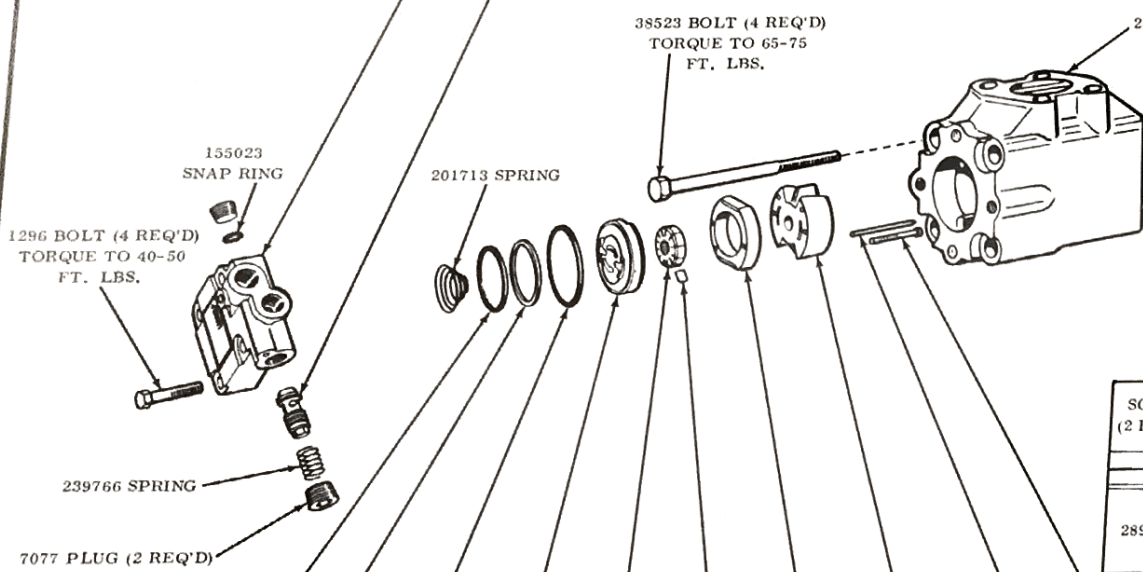
MODEL DESIGNATION	TYPE	COVER
2521V*A/F*-***10	4-BOLT	250824
2521V*C/E*-***10	STRAIGHT THREAD	252504
2521V*C/E*-***2*10	FLOW CONTROL	257560
2521V*C/E*-***4*10	FLOW CONTROL	257561
2521V*C/E*-***6*10	FLOW CONTROL	257562
2521V*C/E*-***7*10	FLOW CONTROL	257563
2521V*C/E*-***8*10	FLOW CONTROL	257564
2521V*C/E*-***10*10	FLOW CONTROL	257565
2521V*C/E*-***12*10	FLOW CONTROL	257999

RELIEF VALVE SUB-ASSEMBLY	RELIEF SETTING (PSD)	MODEL DESIGNATION
232794	750	2521V***-***C10
232795	1000	2521V***-***D10
232796	1250	2521V***-***E10
232797	1500	2521V***-***F10
232798	1750	2521V***-***G10
232799	2000	2521V***-***H10

MODEL DESIGNATION	BODY	TYPE
2521V*A/E*-***10	233709	4-BOLT
2521V*C/F*-***10	242216	STRAIGHT THREAD

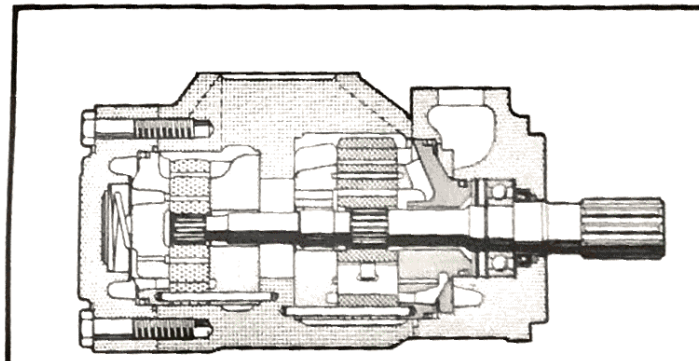
LOCK RING	SNAP RING	BEARING	SHAFT	KEY	WASHER	MODEL DESIGNATION
191400	120128	1705	252737 252736	9955 --	190362	2521V***-1*10 2521V***-11*10

SCREW (2 REQ'D)	BRACKET	MODEL DESIGNATION
199740	199491	2521V***-***10-002



SCREW (2 REQ'D)	PIN (2 REQ'D)	WEAR PLATE SUB-ASSEMBLY (INCL. BUSHING)	RING	ROTOR	VANE KIT (10 VANES 10 INSERTS)	PRESSURE PLATE	"O" RING	BACK-UP RING	"O" RING	"O" RING	BACK-UP RING	CARTRIDGE KIT	MODEL DESIGNATION
289472	229662	326990	326984 326985 326986 326988	270597	922710	326981	▲154095	▲271806	▲154092	▲154078	▲271789	923251 923252 923253 923254	2521V1***-***10 2521V14***-***10 2521V17***-***10 2521V21***-***10

"O" RING	BACK-UP RING	"O" RING	PRESSURE PLATE	ROTOR	VANE KIT (12 VANES)	RING	WEAR PLATE	PIN (2 REQ'D)	SCREW (1 REQ'D)	CARTRIDGE KIT	MODEL DESIGNATION
▲154088	▲266392	▲154090	282500	172302 172294 215043	912031 912032	251100 251101 251103 251104	252004 252005 253279	158465	289473	923044 923045 923046 923047 923048	2521V** 5-***10 2521V** 6-***10 2521V** 8-***10 2521V** 9-***10 2521V**11-***10



▲ THESE PARTS ARE INCLUDED IN SEAL KIT 922856

ASSEMBLY VIEW

SPARE PARTS STOCK RECOMMENDATIONS (FOR EACH 100 UNITS IN OPERATION)

PART NUMBER	NAME	2521V											QUANTITY PER UNIT	QUANTITY RECOMMENDED FOR STOCK	
		* CAPACITY SHAFT END	* PORT CONNECTIONS	* CAPACITY COVER END	* SHAFT TYPE	* OUTLET POSITIONS	* FLOW CONTROL RATE	* RELIEF VALVE SETTING	10 DESIGN	L LEFT HAND ROTATION	*** SPECIAL FEATURES				
1296	BOLT													4	20
SEE PAGE 1	COVER		A, C, E, F				2, 4, 6, 7, 8, 10, 12							1	2
155023	SNAP RING		C, E											1	10
SEE PAGE 1	RELIEF VALVE							C, D, E, F, G, H						1	2
239766	SPRING		C, E											1	10
7077	PLUG		C, E											2	4
201713	SPRING													1	10
282500	PRESSURE PLATE			5, 6, 8, 9, 11										1	15
SEE PAGE 1	ROTOR			5, 6, 7, 9, 11										1	15
SEE PAGE 1	VANE KIT			5, 6, 7, 9, 11										1	15
SEE PAGE 1	RING			5, 6, 7, 9, 11										1	15
SEE PAGE 1	WEAR PLATE			5, 6, 7, 9, 11										1	15
158465	PIN			5, 6, 7, 9, 11										2	15
289473	SCREW			5, 6, 7, 9, 11										2	15
SEE PAGE 1	CARTRIDGE KIT			5, 6, 7, 9, 11										1	15
38523	BOLT													4	20
251263	HOUSING (INLET)													1	2
289472	SCREW	12, 14, 17, 21												2	15
229662	PIN	12, 14, 17, 21												2	15
326990	WEAR PLATE SUB-ASSEMBLY	12, 14, 17, 21												1	15
SEE PAGE 2	RING	12, 14, 17, 21												1	15
270597	ROTOR	12, 14, 17, 21												1	15
922710	VANE KIT	12, 14, 17, 21												1	15
326981	PRESSURE PLATE	12, 14, 17, 21												1	15
SEE PAGE 2	CARTRIDGE KIT	12, 14, 17, 21												1	15
191400	LOCK RING													1	10
120128	SNAP RING													1	10
1705	BEARING													1	10
9955	KEY				1									1	5
252737	SHAFT				1									1	7
252736	SHAFT				11									1	7
190362	WASHER													1	10
233709	BODY		A, E											1	2
242216	BODY		C, F											1	2
199740	SCREW											002		2	10
199491	BRACKET											002		1	2
922857	SEAL KIT													1	25

● MAY BE PURCHASED IN CARTRIDGE KIT



WHEN ORDERING SPARE CARTRIDGE PARTS, IT IS RECOMMENDED THEY BE OBTAINED IN CARTRIDGE KITS. KITS ARE ASSEMBLED AND TESTED BY VICKERS FOR EITHER RIGHT OR LEFT HAND ROTATION. IF LEFT HAND ROTATION IS REQUIRED IT SHOULD BE SPECIFIED ON PARTS ORDER BY ADDING SUFFIX "L" TO CARTRIDGE KIT NUMBER: FOR EXAMPLE, 923251-L.

To insure sustained efficiency and maximum trouble-free life of this precision equipment, initial and continuous filtration of the fluid medium to 25 microns or less is essential. For information pertaining to Vickers economical 10 micron filters, see installation drawing M 229847.